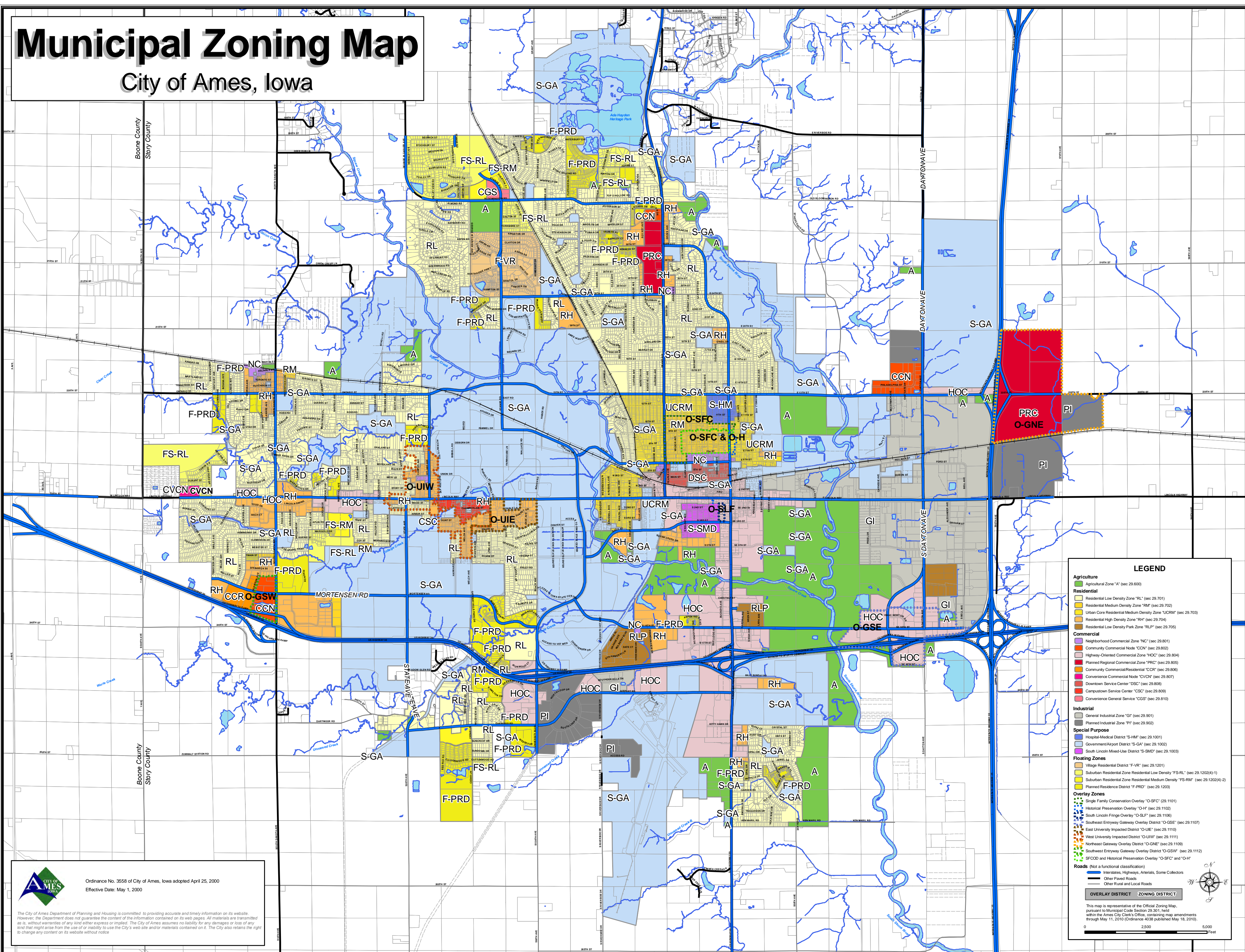


Municipal Zoning Map

City of Ames, Iowa

Boone County
Story County

Boone County
Story County




LEGEND

- Agriculture**
 - Agricultural Zone "A" (sec 29.600)
- Residential**
 - Residential Low Density Zone "RL" (sec 29.701)
 - Residential Medium Density Zone "RM" (sec 29.702)
 - Urban Core Residential Medium Density Zone "UCRM" (sec 29.703)
 - Residential High Density Zone "RH" (sec 29.704)
 - Residential Low Density Park Zone "RLP" (sec 29.705)
- Commercial**
 - Neighborhood Commercial Zone "NC" (sec 29.801)
 - Community Commercial Node "CCN" (sec 29.802)
 - Highway-Oriented Commercial Zone "HOC" (sec 29.804)
 - Planned Regional Commercial Zone "PRC" (sec 29.806)
 - Community Commercial/Residential "CCR" (sec 29.806)
 - Convenience Commercial Node "CVCN" (sec 29.807)
 - Downtown Service Center "DSC" (sec 29.808)
 - Campus/Service Center "CSC" (sec 29.809)
 - Convenience General Service "CGS" (sec 29.810)
- Industrial**
 - General Industrial Zone "GI" (sec 29.901)
 - Planned Industrial Zone "PI" (sec 29.902)
- Special Purpose**
 - Hospital/Medical District "S-HM" (sec 29.1001)
 - Government/Airport District "S-GA" (sec 29.1002)
 - South Lincoln Mixed-Use District "S-SMD" (sec 29.1003)
- Floating Zones**
 - Village Residential District "F-VR" (sec 29.1201)
 - Suburban Residential Zone Residential Low Density "FS-RL" (sec 29.1202(4)-1)
 - Suburban Residential Zone Residential Medium Density "FS-RM" (sec 29.1202(4)-2)
 - Planned Residence District "F-PRD" (sec 29.1203)
- Overlay Zones**
 - Single Family Conservation Overlay "O-SFC" (sec 29.1101)
 - Historical Preservation Overlay "O-H" (sec 29.1102)
 - South Lincoln Fringe Overlay "O-SLF" (sec 29.1106)
 - Southeast Entryway Gateway Overlay District "O-GSE" (sec 29.1107)
 - East University Impacted District "O-UIE" (sec 29.1110)
 - West University Impacted District "O-UIW" (sec 29.1111)
 - Northeast Gateway Overlay District "O-GNE" (sec 29.1109)
 - Southwest Gateway Overlay District "O-GSW" (sec 29.1112)
 - SFCOD and Historical Preservation Overlay "O-SFC" and "O-H"
- Roads (Not a functional classification)**
 - Interstates, Highways, Arterials, Some Collectors
 - Other Paved Roads
 - Other Rural and Local Roads

OVERLAY DISTRICT ZONING DISTRICT

This map is representative of the Official Zoning Map, pursuant to Municipal Code Section 29.201, held within the Ames City Clerk's Office, containing map amendments through May 11, 2010 (Ordinance 4038 published May 18, 2010).

0 2,500 5,000 Feet

 Ordinance No. 3558 of City of Ames, Iowa adopted April 25, 2000
Effective Date: May 1, 2000

The City of Ames Department of Planning and Housing is committed to providing accurate and timely information on its website. However, the Department does not guarantee the content of the information contained on its web pages. All materials are transmitted as is, without warranties of any kind, express or implied. The City of Ames assumes no liability for any damages or loss of any kind that might arise from the use of or inability to use the City's web site and/or materials contained on it. The City also retains the right to change any content on its website without notice.