

To: Mayor and City Council

From: Damion Pregitzer, P.E. PTOE, Traffic Engineer

Date: November 25, 2024

Subject: Recent Traffic Studies on Hyde Avenue

## **BACKGROUND:**

**At the May 14, 2024, City Council meeting, staff was directed to provide a memo regarding traffic studies on Hyde Avenue between Bloomington Road and 190th Street. Only one recent study has been conducted for Hyde Avenue in which staff reviewed speed trends along the street.**

Staff has reviewed data from our location-based software services (Streetlight), and the following insights are highlighted:

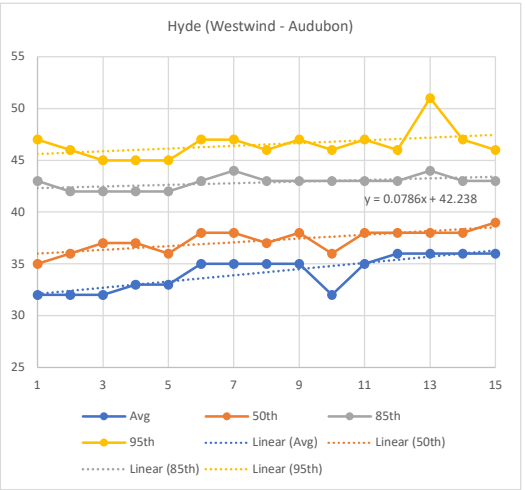
- Speed trends along Hyde Avenue appear to be slowly increasing in some segments, particularly where the roadway widens at the north end.
- Higher-than-desirable speeds highlight the need for targeted interventions to improve compliance with the posted speed limit.
- Anticipated development on the west side of Hyde Avenue is expected to increase trip volumes and intersection density, further urbanizing the corridor.
- This urbanization will likely lead to speed patterns that better align with the surrounding subdivisions, as increased traffic activity tends to mitigate excessive speeds naturally.

## **NEXT STEPS:**

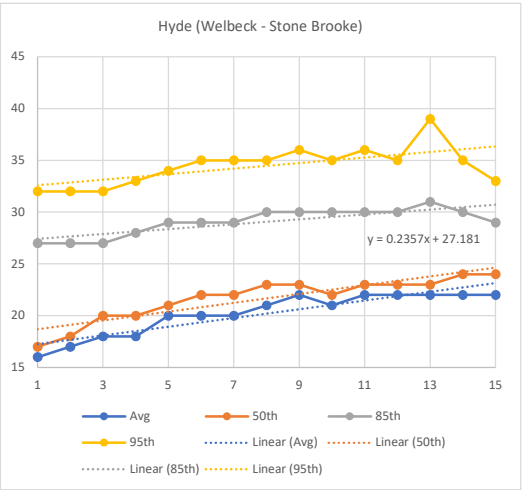
Staff is exploring potential traffic-calming measures for implementation in areas with elevated speeds. Staff will then monitor the effectiveness of the traffic-calming measures that are installed for alignment with current conditions and future development. This approach will integrate future growth into traffic management strategies, ensuring Hyde Avenue continues to evolve into a safer, urbanized corridor that meets community expectations.

Attachment (1): Streetlight Speed Data Trends

Hyde (Westwind - Audubon)					
	Avg	50th	85th	95th	ADT
2018 Q1	32	35	43	47	1325
2018 Q2	32	36	42	46	1670
2018 Q3	32	37	42	45	1668
2018 Q4	33	37	42	45	1537
2019 Q1	33	36	42	45	1483
2019 Q2	35	38	43	47	1833
2019 Q3	35	38	44	47	1763
2019 Q4	35	37	43	46	1921
2020 Q1	35	38	43	47	1699
2020 Q2	32	36	43	46	1372
2020 Q3	35	38	43	47	1706
2020 Q4	36	38	43	46	1586
2021 Q1	36	38	44	51	1704
2021 Q2	36	38	43	47	1979
2021 Q3	36	39	43	46	1912



Hyde (Welbeck - Stone Brooke)					
	Avg	50th	85th	95th	ADT
2018 Q1	16	17	27	32	1930
2018 Q2	17	18	27	32	2507
2018 Q3	18	20	27	32	2532
2018 Q4	18	20	28	33	2258
2019 Q1	20	21	29	34	2384
2019 Q2	20	22	29	35	2677
2019 Q3	20	22	29	35	2710
2019 Q4	21	23	30	35	2683
2020 Q1	22	23	30	36	2287
2020 Q2	21	22	30	35	2058
2020 Q3	22	23	30	36	2344
2020 Q4	22	23	30	35	2159
2021 Q1	22	23	31	39	2276
2021 Q2	22	24	30	35	2719
2021 Q3	22	24	29	33	2744



Hyde (Stone Brooke - Harrison)					
	Avg	50th	85th	95th	ADT
2018 Q1	21	22	31	36	1728
2018 Q2	21	23	31	36	2133
2018 Q3	20	22	30	34	2122
2018 Q4	21	23	30	35	1887
2019 Q1	21	22	31	35	1915
2019 Q2	22	24	32	37	2300
2019 Q3	22	24	31	36	2285
2019 Q4	23	26	32	37	2344
2020 Q1	24	26	33	37	2013
2020 Q2	23	25	32	37	1778
2020 Q3	24	26	33	37	2078
2020 Q4	24	26	32	36	1900
2021 Q1	24	26	34	41	1965
2021 Q2	25	27	33	37	2317
2021 Q3	25	27	32	36	2310

