

COUNCIL ACTION FORM

SUBJECT: **HOOVER AVENUE PARKING ORDINANCE**

BACKGROUND:

During the public outreach for the pavement improvement project taking place on Hoover Ave, several public comments were received regarding the parking regulations on Hoover Avenue. In evaluating these comments, staff found that the main issue is that parking is allowed on both sides of the roadway from 24th Street to 30th Street, where the pavement width is only 31 feet. Current standards would allow parking on only one side for a road of this width.

To address these issues, promote safety, and create consistent parking regulations along the entire Hoover Avenue corridor, staff has prepared the following proposed parking restrictions:

- Prohibit parking at all times on the east side of Hoover Avenue from 24th Street to 30th Street
- Prohibit parking at all times on the east side of Hoover Avenue from Bloomington to Adams Street.

A map indicating the areas affected is attached. These sections of Hoover Avenue experience very low on-street parking with the majority of parking typically occurring on the west side of the roadway.

ALTERNATIVES:

1. Approve on first reading an ordinance that prohibits parking at all times on the east side of Hoover Avenue from 24th Street to 30th Street and from Bloomington Road to Adams Street.
2. Make no changes in the parking regulation along Hoover Avenue at this time.

CITY MANAGER'S RECOMMENDED ACTION:

The width of Hoover Avenue, except from 30th Street to Bloomington Road, does not meet the current standards to allow parking on both sides of the street. After reviewing the prevailing parking patterns, staff believes the proposed ordinance will improve safety and traffic flow. Letters have been sent to the affected adjoining properties and no objections have been received.

Therefore, it is the recommendation of the City Manager that the City Council adopt alternative No. 1, as described above.

ORDINANCE NO. _____

AN ORDINANCE TO AMEND THE MUNICIPAL CODE OF THE CITY OF AMES, IOWA, CHAPTER 18.31, SECTION (313), FOR THE PURPOSE OF PROHIBITING PARKING AT ALL TIMES ON CERTAIN SECTIONS OF HOOVER AVENUE; REPEALING ANY AND ALL ORDINANCES OR PARTS OF ORDINANCES IN CONFLICT TO THE EXTENT OF SUCH CONFLICT; PROVIDING A PENALTY; AND ESTABLISHING AN EFFECTIVE DATE.

BE IT ENACTED, by the City Council for the City of Ames, Iowa, that:

Section One. The Municipal Code of the City of Ames, Iowa shall be and the same is hereby amending Chapter 18.31, Section (313) prohibiting parking on Hoover Avenue as follows:

“Sec. 18.31. REGULATIONS FOR SPECIFIC STREETS OR LOCATIONS.

•••

(313) **HOOVER AVENUE.** Parking is prohibited at all times on the east side of Hoover Avenue from ~~Adams Street to Top O Hollow Road~~ 24th Street to 30th Street and from Bloomington Road to Adams Street.”

Section Two. Violation of the provisions of this ordinance shall constitute a municipal infraction punishable as set out by law.

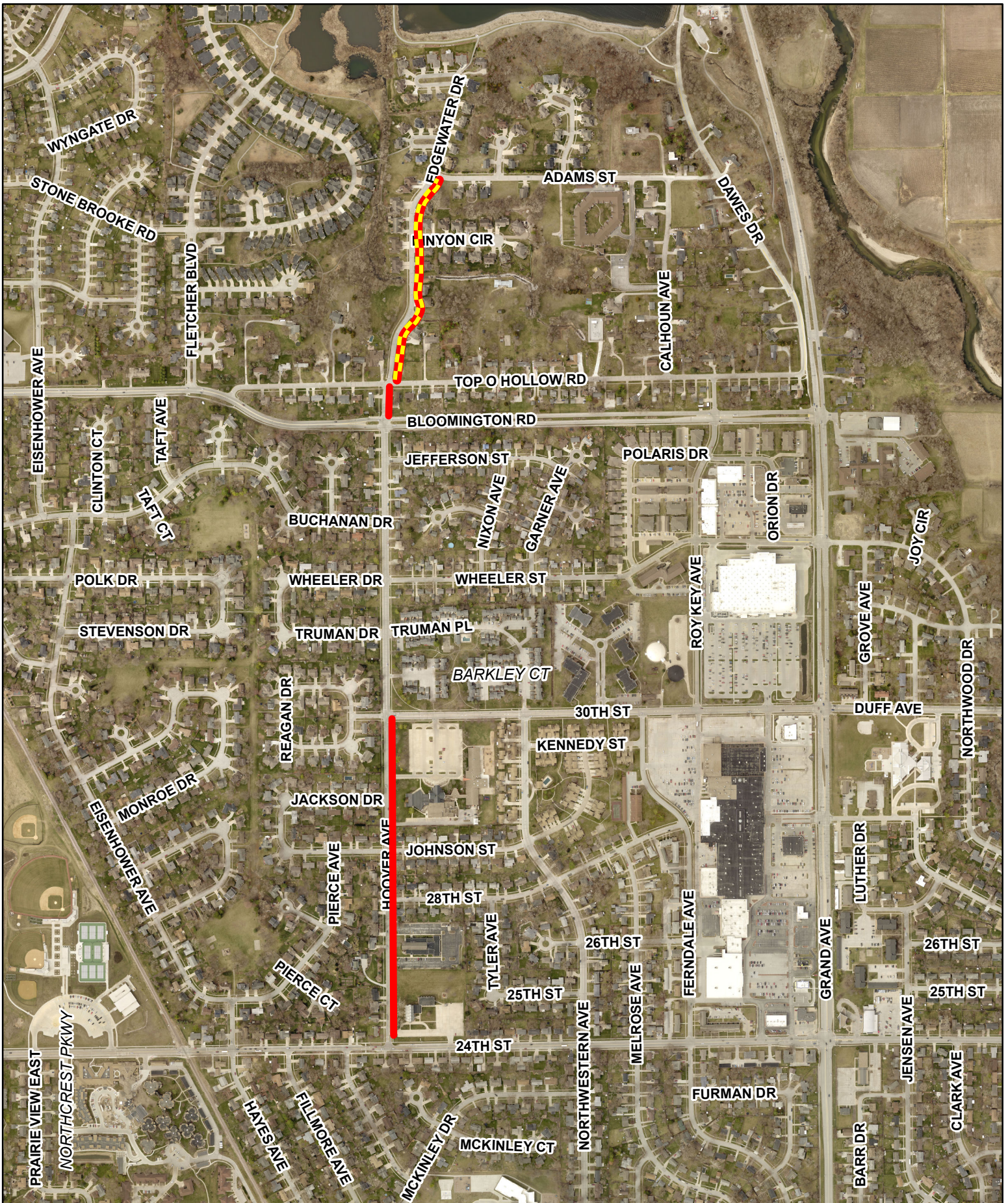
Section Three. All ordinances, or parts of ordinances, in conflict herewith are hereby repealed to the extent of such conflict, if any.

Section Four. This ordinance shall be in full force and effect from and after its passage and publication as required by law.



Passed this _____ day of _____, 2022

Renee Hall, City Clerk

John A. Haila, Mayor



Hoover Avenue Parking Ordinances

-  Existing Prohibited Parking
-  Proposed Prohibited Parking



1 inch = 750 feet

Date: 7/18/2022

