

COUNCIL ACTION FORM

SUBJECT: SIDEWALK INFILL FOR 2021/22 ASPHALT STREET PAVEMENT IMPROVEMENT (TOP-O-HOLLOW ROAD, OPAL DRIVE, OPAL CIRCLE, TURQUOISE CIRCLE, AND HARCOURT DRIVE)

BACKGROUND:

This is an annual program for reconstruction and rehabilitation of asphalt streets. **This project involves a full reconstruction of Top-O-Hollow Road and Opal Drive. As design nears completion, direction from City Council is required regarding the sidewalk infill to be completed as part of these street improvements.**

The City Council has adopted a Complete Streets Plan and policy. According to this policy, in the project evaluation stage it is noted that, **“If all the specified street elements and modal facilities cannot be incorporated into the street design, the designer and project team should seek solutions that at least partially achieve the goals of the project. One example of this approach is adding a sidewalk to only one side of the street where right-of-way is constrained.”** All the streets in this project have existing sidewalks on both sides of the street, except:

- North side of Top-O-Hollow Rd from Bloomington Rd to Dawes Dr
- West side of Opal Dr from Jewel Dr to Crystal St.

TOP-O-HOLLOW ROAD ISSUES:

Top-O-Hollow has existing sidewalk connectivity on the entire south side of the street in the project area. The infill of sidewalk on the north side of Top-O-Hollow Rd will increase the cost of Top-O-Hollow Rd project by **24% or an additional \$307,000. This exceeds the 22% cost increase threshold indicated in the Complete Streets Plan.** There are also several issues with the design that interfere with implementation of the infill of sidewalk. These include removal of mature trees, relocation of existing electric overhead poles/lines, and replacing all existing driveways to meet ADA requirements

Through staff’s technical engineering analysis, it is recommended that infill of sidewalk not be implemented in this location.

OPAL DRIVE ISSUES:

Opal Drive has existing sidewalk connectivity on the entire east side of the street in the project area. The infill of sidewalk on the west side of Opal Dr will increase the cost of Opal Dr project by **32% or an additional \$67,200. This exceeds the 22% cost increase threshold indicated in the Complete Streets Plan.** There are also several issues with the design that interfere with implementation of the infill of sidewalk. These include replacing all existing driveways to meet ADA requirements and changing the existing driveway slope at 220 Crystal St from 8.6% to an unacceptable 21%.

Through staff's technical engineering analysis, it is recommended that infill of sidewalk not be implemented in this location.

Staff will hold a public information meeting for these projects in the near future with all the residents/businesses to discuss the scope of the project. Staff will return to the City Council for approval of the plans and specifications that incorporate Council's direction regarding sidewalk infill and information receive from the public meeting.

Revenue and expenses for this project are estimated as follows:

Source/Activity	Available Revenue	Estimated Expenses
G.O. Bonds	\$ 2,500,000	
Construction (Without infill of Sidewalk)		\$1,943,953.35
Engineering/Admin		\$ 343,050.59
TOTAL	\$ 2,500,000	\$2,287,003.94

ALTERNATIVES:

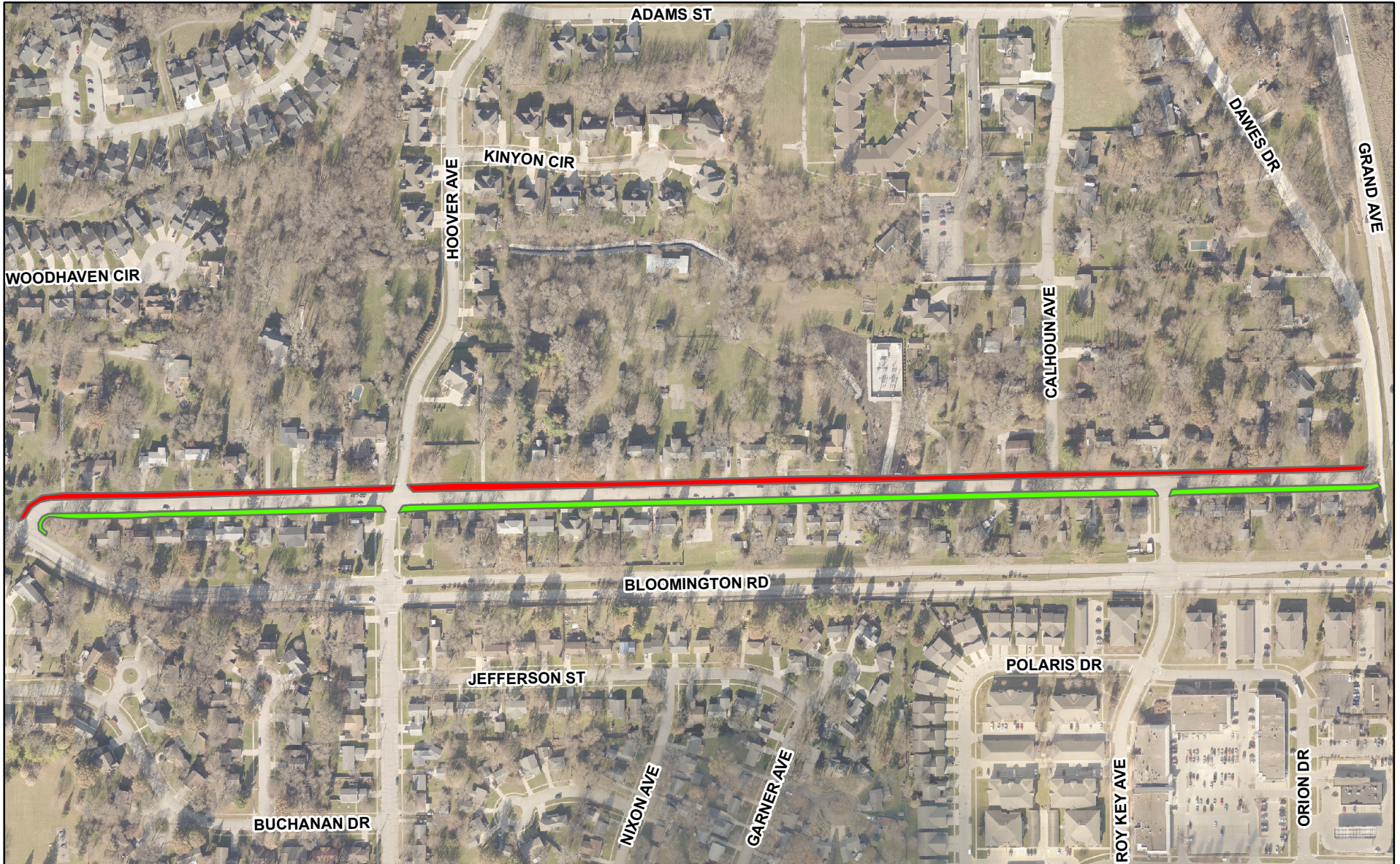
1. Direct staff to design both projects with no new sidewalk infill.
2. A. Direct staff to design the Top-O-Hollow Road project with sidewalk infill
B. Direct staff to design the Opal Drive project with sidewalk infill.
3. Refer this report to staff for further information.

CITY MANAGER'S RECOMMENDED ACTION:

These project areas are difficult locations to install additional sidewalks that comply with required standards due to challenging grades, removal of mature trees, and relocation of electric overhead poles/lines. **Even without sidewalk infill in these locations, sidewalk connectivity will still be provided with existing sidewalk. Staff believes this sidewalk infill plan is consistent with the City's Complete Streets policy as noted above.**

Therefore, it is the recommendation of the City Manager that the City Council approve Alternative No.1, as noted above.

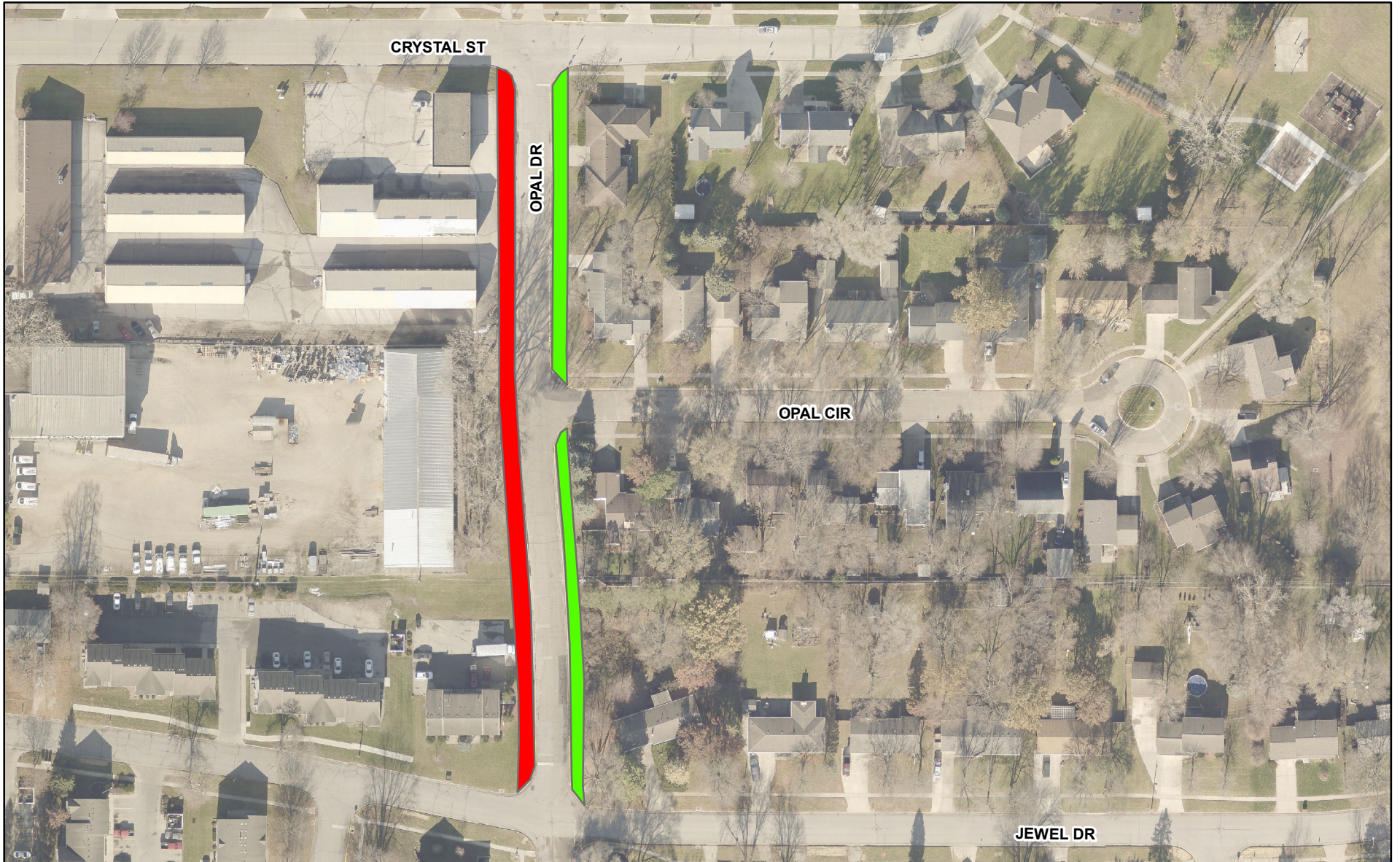
2021/22 Asphalt Street Pavement Improvements



-  No New Sidewalk Infill
-  Existing Sidewalk

Top-O-Hollow Rd - Bloomington Rd to Daves Dr

2021/22 Asphalt Street Pavement Improvements



-  No New Sidewalk Infill
-  Existing Sidewalk

Opal Dr - Jewel Dr to Crystal St