

COUNCIL ACTION FORM

SUBJECT: **SPLASH PAD LOCATION**

BACKGROUND:

Many communities across Iowa and the country have installed splash pads. Over the years, residents have asked about putting one in Ames. In contrast to the wading pool at Brookside Park, a splash pad has more play value, does not have standing water, and does not require staff to be present while it is open. A splash pad project has been included in the City's Capital Improvement Plan (CIP) for several years and \$300,000 has been allocated for fiscal year 2020/21.

Staff presented City Council with several water management options at its November 24, 2020 meeting and Council directed staff to pursue a recirculation system for the splash pad. In order to install a recirculation system, an additional \$200,000 would be needed. This additional funding was secured from General Fund savings in the amended FY 2020/21 City Budget. Design proposals are due April 7 and staff will then select a consultant. The splash pad is estimated to be open in May 2022.

PROJECT DETAIL:

The project will include the installation of an approximately 4,800 square foot splash pad with a combination of in-ground and above-ground spray features. It will be designed with accessibility, inclusiveness, safety, and playability at the forefront. There will be an activation button for patrons to turn on the features and a timer to limit when the features are operational. Benches will be included, and shade structures will be added if funding allows.

It is anticipated the splash pad season of operation will be Memorial Day weekend to Labor Day. The pad will be open seven days per week with features being operational approximately 11:00 AM – 7:00 PM. Having the splash pad available for private rentals will also be discussed in the near future.

LOCATION SELECTION CRITERIA:

When evaluating location criteria, staff looked at what could be measureable and thus compared as objectively as possible. The following criteria, not in any particular order, were used to review potential sites:

- Restrooms within 200 feet & clear sight lines (restrooms are required for health code compliance)
- Out of flood plain

- Fits with park philosophy
- Space available
- Relatively flat space
- Parking available
- Visible from road
- Minimize maintenance issues
- Safety
- Community equity
- Easy to access

LOCATION OPTIONS:

The City manages 38 parks. Because permanent restrooms are required for a splash pad to be constructed, eight City parks are potential options for a splash pad location. These parks are:

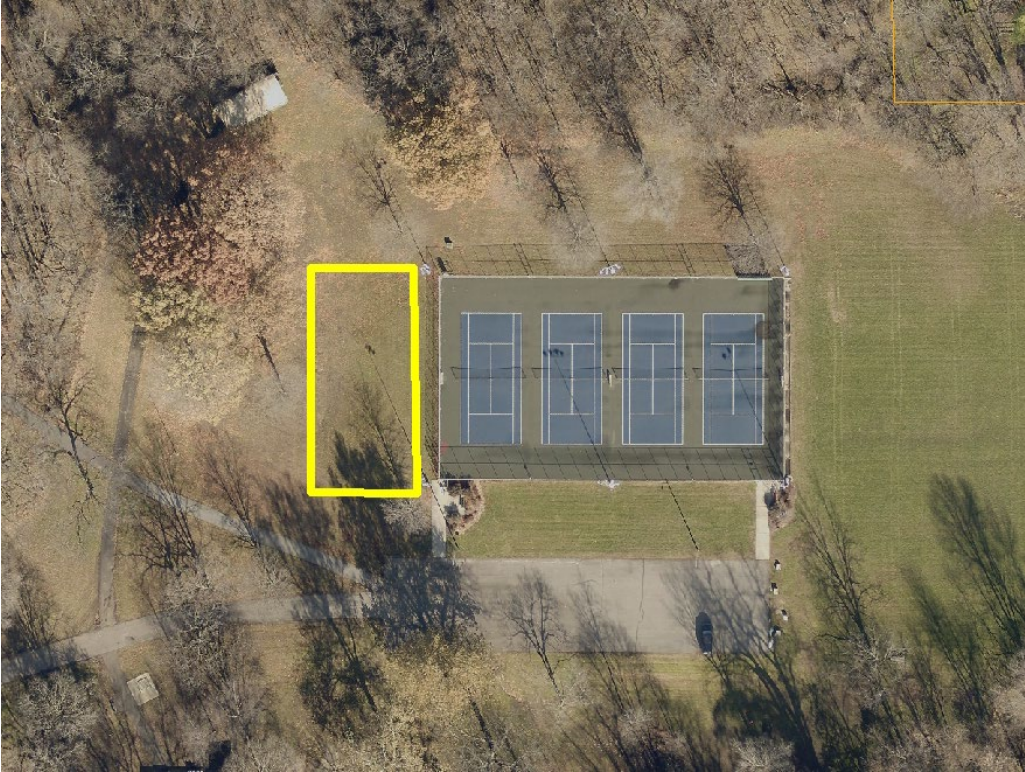
- Ada Hayden Heritage Park
- Bandshell Park
- Brookside Park
- Daley Park
- Emma McCarthy Lee Park
- Inis Grove Park
- Moore Memorial Park
- River Valley Park

Staff reviewed these eight parks with the criteria shown in the table on the next page

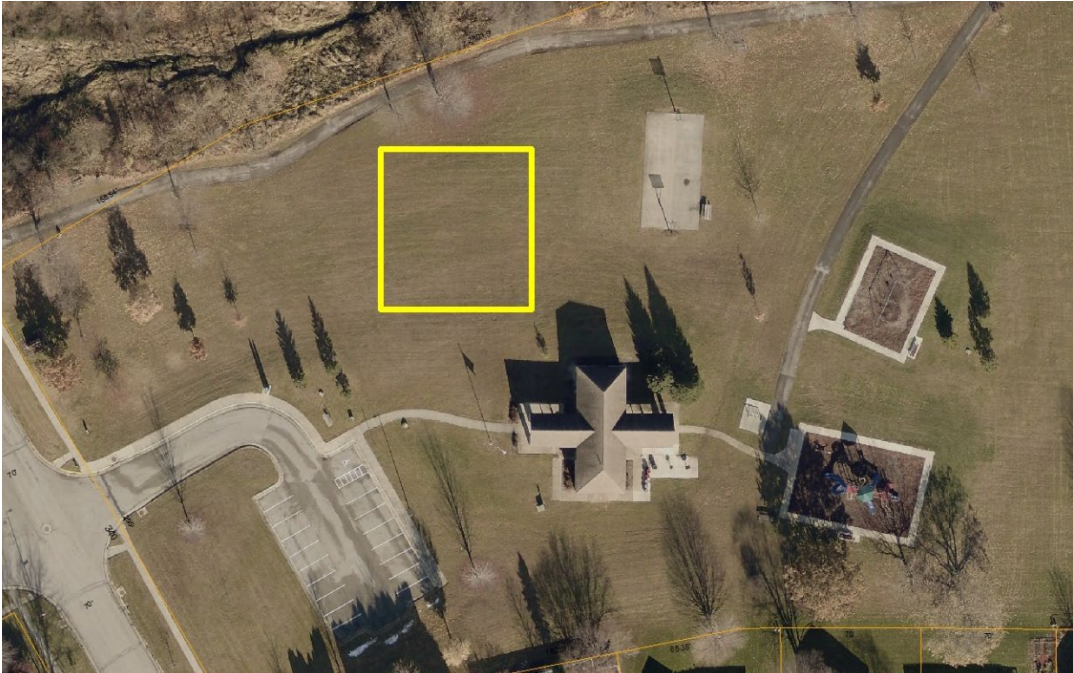
Park	Restroom w/in 200 Feet – Clear Sight Line	Out of Flood Plain	Fits w/ Park Philosophy	Space Avail.	Flat Space	Enough Parking Avail.	Visible from Road	Minimize Maint.
Ada Hayden	Y	Y		Y	Y	Y	Y/N	Y
Bandshell	Y	Y			Y		Y	
E. Brookside		Y	Y	Y	Y		Y	
W. Brookside	Y		Y	Y	Y	Y	Y	
Daley	Y	Y	Y	Y	Y	Y	Y	Y
Emma McCarthy Lee	Y	Y	Y	Y	Y	Y		
Inis Grove		Y	Y	Y	Y	Y	Y	Y
Moore Mem.		Y	Y	Y		Y		Y
River Valley	Y		Y	Y	Y	Y	Y	Y

Based on the criteria, the East Brookside, Inis Grove, and Moore Memorial Park locations were eliminated because the restroom requirement cannot be met. West Brookside and River Valley Park are in the flood plain and were eliminated. Ada Hayden Heritage Park is an environmental/conservation area and Bandshell Park is geared for entertainment so both parks were removed from consideration. **Therefore, Emma McCarthy Lee Park and Daley Park remain as potential sites.** Both sites are shown on the following page with the yellow box indicating the potential splash pad location.

Emma McCarthy Lee Park Potential Location



Daley Park Potential Location



PROS AND CONS OF EACH OF THE FINAL TWO LOCATIONS CONSIDERED:

Both sites have the space available, adequate parking, not in the flood plain, are located on the west side of town, and have a permanent restroom. The differences between the two potential locations to be considered are visibility, safety, and accessibility.

A majority of vandalism in the park system occurs when amenities/areas are less visible. Staff also reviews projects using Crime Prevention Through Environmental Design (CPTED) principles which focuses on eliminating obstructions and keeping sight lines open. The location at Daley Park is more in the open and much more visible than at Emma McCarthy Lee Park.

Safety is a top priority and having a location that is in the open and more visible increases the safety of the users. The Emma McCarthy Lee location is tucked away which leads to safety concerns for this site. The fact that there are no sidewalks on Ross Road is a safety concern for children and/or families wishing to walk or bike to Emma McCarthy Lee Park.

The lack of sidewalks is also an accessibility concern for those near the park. Daley Park has sidewalks/paths on both sides of Wilder which helps make the park more accessible. The off-street parking on the west side of Wilder could be a concern. However, City Council can be asked to change the off-street parking to the east side of Wilder. The splash pad will draw people from across Ames, however, staff feels the neighborhood will use quite often. Utilizing data from the 2020 population projections, below is the number of children 0-12 years of age near each of these locations.

Number of Children Near Each Park		
	Within ½ mile	Within 1 mile
Emma McCarthy Lee Park	443	1,380
Daley Park	856	1,601

There are almost double the children within ½ mile of Daley Park than Emma McCarthy Lee Park which makes accessibility very important.

A summary of pros and cons for each potential location is provided below:

Emma McCarthy Lee Park

Pros

- Restroom within 200 feet and clearly visible
- Adequate off-street parking
- Not in the flood plain
- Flat space is available
- Adds an amenity to the west side of Ames
- Has shade
- Trail access from Oakland Street

Cons

- Hidden in lower portion of the park
- Not visible from the street
- Number of trees near splash pad will increase maintenance
- No sidewalks on Ross Road is safety concern for children walking to park

Daley Park

Pros

- Restroom within 200 feet and clearly visible
- Visible from the street
- Not in the flood plain
- Flat space is available
- Adds an amenity to the west side of Ames
- Trail access along Wilder and from South Dakota
- Few trees near splash pad minimizes maintenance

Cons

- Small off-street parking lot
- On-street parking is currently on west side of Wilder, which is the side further from the park (City Council can be asked to change to east side)
- Lacks shade

PUBLIC INPUT:

Two public meetings were held virtually on March 16, 2021 to gather feedback regarding potentially locating the splash pad at either of the final two location options. The first meeting focused more on Emma McCarthy Lee Park while the second was geared to Daley Park. Staff felt both meetings were very positive with good questions asked and some concerns raised. The notes from each meeting are shown in Attachment A (Emma McCarthy Lee Park) and Attachment B (Daley Park).

Additionally, Attachment C contains comments received via email and Facebook. Some of the correspondence with individuals contain several emails so staff responses to those email strings are included. There was more opposition to the splash pad location at Daley Park via emails; however, there were a number of comments in favor of Daley Park as well.

PARKS AND RECREATION COMMISSION COMMENTS:

The Parks and Recreation Commission discussed the potential locations at its March 25, 2021 meeting. The Commission commented that it has heard from residents in the past about having more recreational amenities on the west side of town, so both suggested locations were favorable. Safety and visibility of the splash pad is important to the

Commission. Although parking may be a concern at times at Daley Park, **the Commission voted 6-0 to recommend City Council approve constructing a splash pad in Daley Park.**

The Commission also felt that on-street parking should be moved from the west side to the east side of Wilder Boulevard from Thackeray Drive to the northern boundary of the Daley Greenbelt. This is shown in Attachment D. Adding off street parking at Daley Park in the future was also discussed.

ALTERNATIVES:

1. Direct staff to:
 - a. Proceed with design of a Splash Pad located in Daley Park
 - b. Prepare an ordinance moving parking from the west side to the east side of Wilder Boulevard from Thackeray Drive to the northern boundary of the Daley Greenbelt
2. Direct staff to proceed with design of a Splash Pad located in Emma McCarthy Lee Park
3. Approve a different location per City Council's direction
4. Refer to staff for more information.

CITY MANAGER'S RECOMMENDED ACTION:

The construction of a splash pad is a project that most people are in favor of. Where to place it is where people differ in opinion. Through a process of elimination two potential locations are being considered.

As is clear from the analysis, no site within the park system is perfect. Pros and cons have been identified for both potential sites. However, based on visibility, safety, and accessibility, Daley Park appears to be the better option.

Therefore, it is the recommendation of the City Manager that the City Council adopt Alternative #1, as described above.

ATTACHMENT A
Public Information Meeting
Splash Pad Emma McCarthy Lee Park

Meeting Began: **5:31 PM**

Staff Participants: **Keith Abraham and Kellee Omlid**

Zoom Participants: **13**

Abraham went over with the Zoom participants how to participate in the meeting by using the chat function or clicking the 'Raise Hand' icon on their screen.

Abraham gave a presentation which included explanation and visuals of the term splash pad, the criteria for selecting a potential site, types of water systems for splash pads, a review of the potential sites, and future dates for the approval process.

Abraham informed the Zoom participants that all 38 parks were considered for this amenity. Only 8 parks have the permanent restrooms required by the state. Abraham went over how the 8 parks were analyzed with the criteria outlined, and the two parks that fit are Emma McCarthy Lee Park and Daley Park

Abraham showed the area in each park where this amenity would be placed.

Abraham again explained how to participate in the meeting.

Abraham asked for comments, questions, or concerns.

Wolfe Kliemann (3300 Ross Rd)

Generally, he feels there should be a splash pad in Ames. He stated he has some concerns regarding the narrow road and asked about the expected attendance.

Abraham informed him that at times, no one could be there. At other times there could be 50 people there. On a very hot day there could be 75-100 people there. Abraham said that he does not expect the traffic to be more than it is in soccer season.

Kliemann asked if this is going to have organized events that would increase people coming at one time. Abraham said that the people would be spread out over the course of the day. Kliemann stated that he feels that is good for kids and for the west side of Ames.

Sally C

Thanked Staff for having this session. She states that her property butts up to Emma McCarthy Lee. She feels McCarthy Lee is a private, quiet park, and Daley is a better fit. Sally also feels that at Daley park, if the parking lot fills up, people could park in the neighborhood.

Abraham said Lee obviously has quite a bit more parking surface than Daley and that staff has discussed these things.

Andrew asked about traffic, which was already answered.

Jay feels like it would be a good fit for either park.

Anonymous feels like parking could be an issue as tennis players also use the parking lot. Abraham stated that most tennis lessons are scheduled in the mornings, and the splash pad hours, though not finalized, would be more like 11:00 AM to 6:00 PM.

Carina asked how long the splash pad will take to build. Abraham stated the contractors will have until May 1, 2022, to complete the project with opening on Memorial Day of 2022.

Abraham also added that as a part of the design prospective in the Request For Proposal (RFP), included the pad be accessible and inclusive so that anyone can go in and utilize this amenity.

Haldre is wondering if there is any thought of a broader view of the park. Abraham informed her that the City Council is working on long range planning. Once they are finished with their comprehensive plan, the Park Master Plan will be updated.

Chat question regarding the bridge replacement. Abraham informed the viewers that the bridge work is going to begin on Friday, with pilings going in next week.

Abraham informed the participants that information gathered tonight will go to the Parks & Recreation Commission on March 25, and then to the City Council in April.

Meeting concluded at 6:11 PM

ATTACHMENT B
Public Information Meeting
Splash Pad Daley Park

Meeting Began: **6:31 PM**

Staff Participants: **Keith Abraham and Kellee Omlid**

Zoom Participants: **8**

Omlid went over with the Zoom participants how to participate in the meeting by using the chat function or clicking the 'Raise Hand' icon on their screen.

Omlid gave a presentation which included explanation and photos showing what a splash pad is, the criteria for selecting a potential site, a review of the potential sites, and future dates for the approval process.

Omlid went over the recirculating system. She explained that it was water treated with chemicals similar to a swimming pool.

Omlid stated that all 38 parks were considered for this amenity. Only 8 parks have the permanent restrooms required by the state. Those 8 parks were analyzed with the criteria outlined, and the two parks that fit are Emma McCarthy Lee Park and Daley Park

Omlid showed the area in each park where this amenity would be placed.

Abraham mentioned that the potential schedule of operation was Memorial Day to Labor Day, and the hours have yet to be determined.

Omlid went over the two ways to provide feedback.

No raised hands or questions.

Abraham says it will be about 5,000 square feet.

Jim Wolter asked if there will be lighting and/or fencing.

Omlid informed him that there is no lighting or fencing involved at this time.

Abraham states it is open to everyone, a free activity for people to utilize.

Jim has concerns about the occasional acts of vandalism in the park, such as broken glass or other concerns.

Abraham informed him the facility would have to be closed for cleanup should something like that happen.

Jim also asked about shade structures and benches.

Omlid stated the budget is \$500,000, so depending on the costs, staff is looking at shade structures.

Jim wanted to clarify if it was two splash pads, one in each park or just one splash pad.

Abraham stated that it would be one splash pad.

Denise feels it will be a great addition to the park. There are many kids in the neighborhood that are of the age to utilize the park.

Jim wondered about the facility in the winter, asking if it is a completely flat space in the winter or are the features left up.

Abraham said that Staff has not determined if they were taking it down each season at this time.

Abraham gave his contact information. This information will also be on the web.

Abraham stated that no one had asked about parking. Currently there is parking for about 20 cars. There could be overflow into the neighborhood.

On-street parking is on the west side of Wilder. With the parking on the west side, there is a safety concern as people will have to cross the street to get to the splash pad. There is a potential that Council could be asked to switch some on-street parking from the west side to the east side in the area where it does not impede the fire hydrants.

Denise stated that with the new trail, parking would be available from Thackeray.

Meeting ended at 6:59 PM.

ATTACHMENT C
SPLASH PAD LOCATION COMMENTS
Via Email and Facebook

Carr Pool would be an excellent choice and respectful of past roots.

I hope you put Carr Pool in your selection sites.

Bonnie Bryant
1532 Glendale Av
Bonnie,

Thanks for the suggestion!

Carr Park is not on the list as it does not have a functional restroom which is a requirement from the Iowa Department of Health.

Have a great day!

Keith

Historically, it has always had a functioning restroom. Are you ghosting the city of Ames citizens?

Respectfully,

Bonnie Bryant

Bonnie,

I'm not sure what you mean when you ask "Are you ghosting the city of Ames citizens?"

Also, there has not been a functioning restroom at Carr Park since 2010 when the bathhouse was closed.

Thanks!

Keith

.....
Hi Keith,

I live on Frost Drive which is adjacent to Daley Park. I received a postcard in the mail about the splash pad.

Is there any information you can share with me about the size of the splash pad and how deep the water would be?

Is it something small like the splash pad that used to be at Brookside Park?

Or is it something much larger and more elaborate?

Thank you,

Lori Whitmer

Lori,

Thanks for reaching out!

The splash pad has not been designed yet but the general size would be approximately 4,800 square feet. To give you an idea of size, this would be about the size of a basketball court.

The pad would be zero-depth which means there would be no standing water which is in contrast to the current wading pool at Brookside Park.

This pad would have a combination of in-ground and above ground water elements. The elements would be on a timer so they would only come on during a defined time frame (i.e. 11:00 AM – 6:00 PM). There would also be an activation switch so the elements would only come on if someone activates the features which would then stay on for a certain amount of time and then shut off. The activation switch could then be pressed again to get the water flowing. I have attached a few photos below to give you a better idea of what it may look like.

Please contact me if you have any further questions.

Keith

Thanks for the info. I appreciate it.

Would it be located east of the small basketball court that is there now, or would that have to be removed?

Would the parking lot need to be enlarged to avoid street parking?

Are they looking at any other parks besides Daley as a location site?

It seems like kind of a fun idea, but the park just seems small for it, assuming that it becomes popular within the community.

~ Lori

Lori,

It would be located west of the basketball court which would remain.

Initially, overflow parking would be on the street and we would monitor how that is working. There is no plan or funding to increase the parking at this time so if we feel it is necessary, we would need to program that into our Capital Improvement Plan.

The other location being considered is Emma McCarthy Lee Park. We will explain how we got to these two parks at our meeting tomorrow night if you plan on attending.

The park is 15.5 acres and the splash pad will be just of 1/10 of an acre so we feel there is enough space to accommodate this amenity. Additionally, we are trying to put amenities throughout the community and feel there is something needed on the west side of Ames.

I appreciate your questions so please reach out if you have more. Thanks and have a great night!

Keith

Good evening,

I tried to call in for the zoom meeting on the telephone,
And the zoom ID for the meeting listed on the postcard was not supported, so I tried a different ID I got off of a link and it said it didn't exist.

Not sure what happened maybe you can shed some light?

Thanks

Keith,

Thank you so much for sending that. I very much appreciate it.

My two questions are:

1. Would somebody be checking the splash pad every morning before opening to endure no vandalism had occurred overnight? (Glass etc)
2. Above ground features vs in ground features (again a vandalism concern of youth hanging onto and climbing on the above ground features) or are the above ground features very durable and sturdy so it's not a concern?

As Jim mentioned on the call, I do agree that we will need some adequate shade options.

Thank you

~ Lori

Lori,

Glad you were able to view the meeting!

Staff will be checking the splash pad in the morning before it opens, at the end of the day after it closes, and periodically throughout the day.

The above ground features are sturdy and should withstand kids hanging and climbing on them.

Have a great day!

Keith

Thanks for answering all my questions.

I think the splash pad sounds like something the community would enjoy.

~Lori

.....
Hello!

I just wanted to give some input regarding the location of a new splash pad in Ames.

Of these two locations, I prefer having it at Daley. There's not much shade there (at Daley) however it's also not incredibly buggy like Emma McCarthy Lee often is during the summer. I also don't love going to EML since the bridge (connecting the neighborhood to campus) was washed out and wasn't replaced. Due to how isolated it feels now (in the lower part of EML) it's often hard for me to feel comfortable there without that busy thoroughfare and all the joggers/bikers/dog walkers constantly coming by.

Thanks,
Renee Keinert

I will add your comment to the list.

I did want to let you know that the McCarthy Lee Bridge Replacement Project has been underway since it washed out. There have been studies done to map water flow and studies on the impact a new bridge would have on wildlife in the area.

Once those were complete, a bridge was designed that meets all safety standards, shows consideration for natural area, and meets flood plain specifications and regulations.

Once the design process was complete, the DNR had to sign off on the design.

Once the DNR signed off, we had to wait for FEMA to sign off on the project.

We had been waiting on FEMA but now they have signed off on the project, so I think construction is underway or should be shortly.

Katie Kole

.....
Tried numerous times to get into the zoom mtg on the above subject as well as the phone number and still wasn't able to join.

I would like to let you know I do not want that Splash Pad at Daley Park. There isn't room and it isn't needed. This is Ames Premier Park and it doesn't need this type of item. This park is widely used by the neighborhood as well as gatherings of all types of residents and the above item would take away from the peace & quiet of the area.

I have lived here for over 25 years and do not want this type of park item installed.

Thank you,
Beth McPhail
5458 Frost Drive

Thank you for sending the slides from last night's meeting.

Again, I wish to convey I don't want this type of feature added to Daley Park. It would ruin the entire park from being family & neighborhood friendly as well as be an eyesore and be a target for vandalism. It would also be a nightmare for parking since the park has limited parking and force people to park along Wilder Blvd which isn't zoned for parking on both sides of the street.

As I have said in my previous email this park is in use basically all year round with the renovated shared pathway, families enjoying the playground equipment and the green space to run & play, toss footballs/baseballs, kick soccer balls as well as fly kites. This park also is used by a lot of church groups during the last Spring and most of the Summer and early Fall to host their get-togethers, and I don't honestly feel this proposed feature would damage the total aesthetics of the park.

I also feel this type of feature wouldn't be utilized to the best of its ability since there aren't a multitude of children in this area. Please consider Brookside Park since that park is centrally located, has the parking space and is easily accessible by car or bike and I believe it would add to the current park features, since I recall this park has a splash pad or wading area pool before the restroom fire.

Please pass along this email as well as the one I sent last night, Tuesday, March 16th to you expressly not wanting this proposed feature.

I would also like to be contacted or made aware of when another public meeting will be held on this issue or when the Parks Commissioners will be meeting.

Thank you,
Beth McPhail
5458 Frost Drive

.....
Hi, Keith —

Regarding the proposed splash pad to Daley Park...

- Where in the park would it be located?
- Are there plans to increase the parking lot size?
- I'm very concerned about the traffic on Wilder. At all times of day, you can witness cars speeding in both directions on Wilder. Because the park is near a creek, approaching cars from both the south and north are coming downhill toward the park, which I suppose contributes to their speed. It's a long stretch of road without any stop signs for Wilder. There's rarely any traffic enforcement, even though I've tried calling in my concerns in the past. I've also noticed cars driving down the middle of the road, almost on the left side of the road. The splash pad will increase pedestrian traffic going toward the park, as well as automobile traffic. I would like to see some modifications and improved traffic control in this area to keep everyone safe.
- I walk through the park frequently. There seems to be a lot of litter and garbage on the ground. I requested the placement of a garbage can near the basketball court but that has not happened. With College Creek bordering the park, any litter on the ground will likely end up in the creek, eventually, causing problems for birds and aquatic life. I understand this is a human behavior issue, but what structural improvements and changes can be made to discourage litter?
- In addition to the litter, there are a lot of people who seem to think the park is an open range dog park. That makes it hard to walk through the green space thanks to all the dog poop they leave behind. That should be fun for patrons of the splash pad to walk through in their bare feet and flip flops!

I'm not opposed to the splash pad. Sounds like a nice feature. But I'd like these issues to be addressed to help ensure it's safe, accessible, and not a drain on the environment. Thanks for the opportunity to ask questions and provide input.

Sallie Nostwich

5422 Frost Drive
snostwich@aol.com

Sallie,

I apologize for not being able to get into the meeting on Tuesday! We had six people join us and gave us feedback. I have attached the slides we used for your review and below is a link to the presentation so you can hear more about the project.

Daley Park - <https://youtu.be/eVJbhw35--w>

Here are your questions and my responses:

Where in the park would it be located?

- **The splash pad would be located west of the basketball pad. There is a picture in the attachment showing the location.**
- Are there plans to increase the parking lot size?
 - **We have discussed this but it is not included in the current project. We will ask City Council to change the on-street parking Wilder in front of the park (from Thackery north to the creek) from the west side of the street to the east side of the street. The parking lot could be increased in the future if needed.**
- I'm very concerned about the traffic on Wilder. At all times of day, you can witness cars speeding in both directions on Wilder. Because the park is near a creek, approaching cars from both the south and north are coming downhill toward the park, which I suppose contributes to their speed. It's a long stretch of road without any stop signs for Wilder. There's rarely any traffic enforcement, even though I've tried calling in my concerns in the past. I've also noticed cars driving down the middle of the road, almost on the left side of the road. The splash pad will increase pedestrian traffic going toward the park, as well as automobile traffic. I would like to see some modifications and improved traffic control in this area to keep everyone safe.
 - **I will discuss this with the City's Traffic Engineer to see what ideas he has to address this topic.**
- I walk through the park frequently. There seems to be a lot of litter and garbage on the ground. I requested the placement of a garbage can near the basketball court but that has not happened. With College Creek bordering the park, any litter on the ground will likely end up in the creek, eventually, causing problems for birds and aquatic life. I understand this is a human behavior issue, but what structural improvements and changes can be made to discourage litter?
 - **Unfortunately, litter is a problem we have in all of our parks and adding trash receptacles don't always solve the issue. We will have trash receptacles included as part of this project which if we place them in the right location, could help with trash at the basketball**

court. I will discuss with staff regarding other ideas to change behavior related to littering.

- *In addition to the litter, there are a lot of people who seem to think the park is an open range dog park. That makes it hard to walk through the green space thanks to all the dog poop they leave behind. That should be fun for patrons of the splash pad to walk through in their bare feet and flip flops!*
 - ***Unfortunately again, this is an issue we face in many parks. I will have conversation with Animal control about increasing patrol of the area and they can help with educating dog owners on the importance of picking up pet waste.***

I hope you have time to watch the presentation as we do discuss some of the items above. Please reach out to me if you have any further questions.

Thanks and have a great weekend!

Keith

Hi, Keith -

Thank you for your response. I watched the video of the meeting. You and your staff did a very good job. I appreciate all the work that goes into this, the pre-planning and the considerations.

One additional question: The closing hour for the splash pad would be 7:00 pm. Is there any possibility that people could reserve the splash pad after that time, like they can do for the park shelters? I recall one time many, many years ago my dear friend, Susan Gwiasda, rented Carr Pool after hours for a friend's birthday party.

I don't have children and I will probably never use the splash pad but I think it's a neat idea and I think Daley Park would be a great location for it. I wish we'd had something like that when I was a kid. All we had were metal slides that caused third-degree burns in the summer and wooden seesaws that gave you 3" splinters in hard-to-reach places.

Thank you for responding to my questions and for all the work you've done to move this idea forward.

Sallie

Sallie,

We have not made a decision about rentals yet but my guess is that there would be rental opportunities.

Have a great day!

Keith

.....
Keith and Team:

Thank you for the presentation and the opportunity to provide feedback. While I generally believe that city's should invest in the community and make efforts to provide resources and recreational things for its citizens to do, I also think we have to take what its people say seriously when they are directly effected by those decisions. For the record I think Ames does a great job of investing resources in the community to make it better, and while a splash pad is something that can be exciting and fun, and Daley park has a lot of people's support, I also have major concerns about it being in Daley Park, especially for the people who's back yards back right up to the park.

I want to be empathetic to the people who live close to Emma McCarthy Lee Park and their concerns too, and I want to be understanding of those in the neighborhood who like the idea, obviously in these cases we tend to look selfishly about our own concerns, and by nature I'm not that way, but none the less I have a few concerns and do not think that the splash pad being there is a good idea or a good fit.

1. The traffic and the noise in the park is already heavy in the spring, summer and fall months, and adding something like this would not only increase the traffic from our own neighborhood, it would bring more traffic in from all over town. I think all of us who signed up to live with a park in our back yard understand that there is going to be some activity, but with the shelter hosting events, the play grounds, and the basketball courts, that is enough activity, in addition to just those walking through the park. The idea of cars parked up and down Wilder and on our other streets, because there is not enough parking at the park and making the neighborhood and the park more congested is not something that would be appealing. Right now the park serves as a neighborhood park more than a city park and even with that it still has busy traffic. A splash pad would put the traffic over the top, and simply is not desirable especially for those that live within 100 yards of it.

2. Regardless of the hours of the park, and the hours of the splash pad there are people in the park and making noise well past the time that they are not supposed to, and this just gives people who don't want to observe the rules one more thing to attract them to the park. It is not policed and the hours are not enforced as it is, as someone who likes to sit in my back yard and enjoy it, I see and hear this first hand, and so this is a concern. I see this as more opportunities to break rules and have traffic in the park after hours, and again for the people that live with there back yard in the park it is a concern.

3. Compared to the other parks, this park has several homes along its property line. More traffic means even less privacy and we already give up plenty of privacy by choosing to live here, more noise and activity means less peace and quiet, and we already give up a certain aspect of those things by choosing to live here. I think we would all say we chose to live here because nobody can build behind us, and to a certain extent we like a certain amount of activity and buzz, and we get plenty of that with the park as it is now. Everyone has there limits though, and I can't speak for what limits my neighbors have up and down the property line, but for me this would push it

past the threshold especially with where it is going to be placed in proximity to where I live.....it is a real concern.

4. More traffic, more activity, larger crowds has the potential to provide more opportunities for unforeseen things to happen, and that is a concern too.

Keith, I'm not fundamentally opposed to having a splash pad in Ames, I'm sure the community as a whole likes the idea, but as someone who lives very close to the park and very close to the location of where you are going to place this, I do oppose having it in this particular park that has so many homes along its property line. Yes we choose to live here, and yes we choose to live here with the understanding and knowledge of activities and traffic in the park, but to me this pushes that noise and activity threshold over the limit, and so I believe if the city is going to put this splash pad in then it should consider parks or locations that have less residences along its property, less amenities at the park itself, and more potential to accommodate car traffic and parking. Whatever is decided we will be good stewards of the neighborhood and the city, we believe community investment from the city is important, but I also really hope you listen to concerns on all sides and how it could impact all people.

Those are my thoughts and I appreciate you taking the time to hear them.

Regards,
Chris Schmale

.....
FACEBOOK COMMENTS:

They are wonderful! It would be nice to have more than one.

So glad a splash pad is in the world! (*sic*) Works?

Yes! Would love to have a splash pad in Ames.

Daley park is the ideal location. There is so much space with little shade. It would be a great addition to the park, especially on hot days!

**ATTACHMENT D
POTENTIAL PARKING ORDINANCE CHANGE**

