

COUNCIL ACTION FORM

SUBJECT: 2018/19 SHARED USE PATH SYSTEM EXPANSION (TRAIL CONNECTION SOUTH OF LINCOLN WAY)

BACKGROUND:

This program provides for the construction of shared-use paths on street rights-of-way, adjacent to streets, and through greenbelts. **This project will construct a path from Beedle Drive to Franklin Park along an alignment that was approved by the Ames Bicycle Coalition.** Staff has been working with WHKS of Ames, Iowa, on this project to complete plans and specifications, with a total estimated construction cost of \$218,116.

Because this project funding source includes Iowa Department of Transportation (DOT) Transportation Alternatives Program (TAP) funds, the project must follow Iowa DOT letting policies and be let by the Iowa DOT. On September 15, 2020, bids for the project were received as follows:

<i>Bidder</i>	<i>Bid Amount</i>
<i>Engineer's Estimate</i>	<i>\$218,116.00</i>
Howrey Construction, Inc.	\$264,834.60
Elder Corporation	\$272,000.00
Absolute Concrete Construction, Inc.	\$285,542.60
TK Concrete, Inc.	\$300,067.05
Con-Struct, Inc.	\$306,557.70
Caliber Concrete, LLC	\$325,361.58
Boulder Contracting, LLC.	\$347,006.10

The table below shows the revenues and expenses for this project:

	Revenue	Expenses
Local Option Sales Tax	\$ 421,000	
AAMPO TAP Funds	\$ 159,000	
Permanent Easements		\$ 48,790.00
Construction		\$ 264,834.60
Engineering and Administration (Estimated)		\$ 109,000.00
	\$ 580,000	\$ 422,624.60

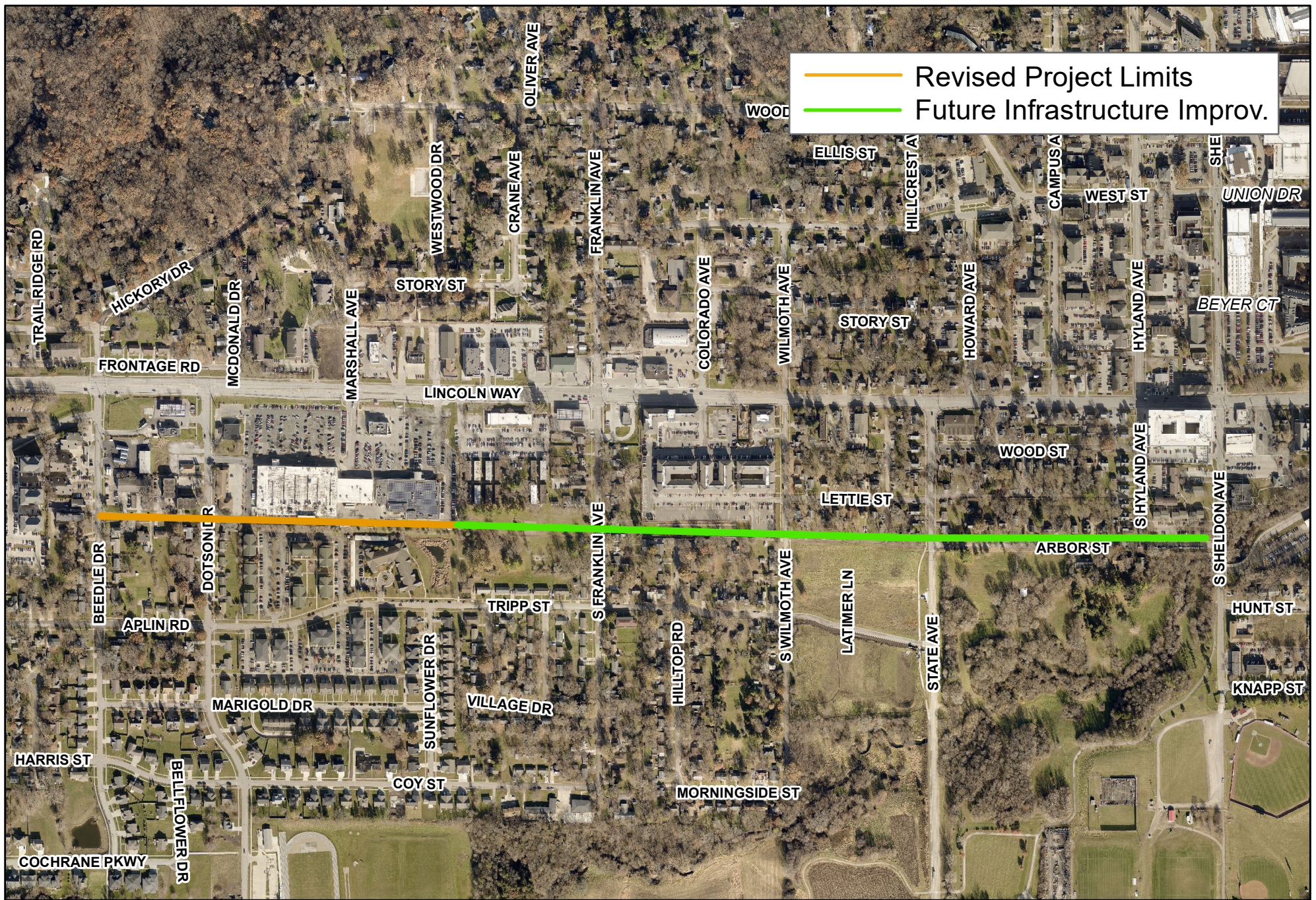
Staff has evaluated the low bid from Howrey Construction, Inc., and determined that it is acceptable. Although this low bid exceeds the Engineer's Estimate for construction costs, sufficient funding exists in the project budget to proceed with this construction contract.

ALTERNATIVES:

1. a. Accept the report of bids for the 2018/19 Shared Use Path System Expansion (Trail Connection south of Lincoln Way).
- b. Approve the final plans and specifications for this project.
- c. Award the 2018/19 Shared Use Path System Expansion (Trail Connection south of Lincoln Way) to Howrey Construction, Inc. of Rockwell City, Iowa, in the amount of \$264,834.60, contingent upon receipt of Iowa DOT concurrence.
2. a. Accept the report of bids for the 2018/19 Shared Use Path System Expansion (Trail Connection south of Lincoln Way).
- b. Reject award and direct staff to modify the project for a future Iowa DOT bid letting.
3. Do not proceed with the project at this time.

CITY MANAGER'S RECOMMENDED ACTION:

By awarding this project, it will be possible to provide an important multimodal connection for residents in the area. Therefore, it is the recommendation of the City Manager that the City Council adopt Alternative No. 1, as described above.



SW Greenbelt Trail
 2018/19 Shared Use Path System Expansion (Trail Connection south of Lincoln Way)
 TAP-U-0155(699)--8I-85



1 inch = 583 feet