

COUNCIL ACTION FORM

SUBJECT: 2019/20 ASPHALT STREET PAVEMENT IMPROVEMENTS – (14TH STREET AND 15TH STREET)

BACKGROUND:

This is the annual program for reconstruction or rehabilitation of asphalt streets that are typically located within residential neighborhoods. Rehabilitation of existing asphalt streets is possible where the base asphalt layer is solid, but the surface course has failed. Full-depth replacement of these streets is necessary in cases of structural pavement failure. This program was created in accordance with City Council's goal of strengthening our neighborhoods. **This project is in the area of 14th St (Duff Ave. to Burnett Ave.) and 15th St. (Duff Ave. to Clark Ave.).**

During the design phase, the plans were prepared following the Complete Streets Plan. The initial estimate for the total project including the Complete Street features (in this case, infilling the sidewalk) totaled 37.5% of the overall project cost. This percentage is higher than the recommended threshold of 22% stated in the Complete Streets Plan. This is partially due to this project being a mill and overlay rehabilitation and not a full reconstruction.

During the public outreach sessions, concerns were brought up by residents about the removal of mature trees that would be needed to infill new sidewalk at multiple locations. **Considering cost and public input, the sidewalk infill design was limited to locations where the impact on trees were minimal** (see attached map for project, including sidewalk infill, locations).

- **14th Street** - There are 2 blocks in need of new sidewalk infill along 14th Street. At this time, we are only including sidewalk infill for the south side of the Kellogg Ave. to Douglas Ave. block. The other locations would require the removal of mature trees and residents have opposed the sidewalk infill. ADA ramps will still be constructed where needed.
- **15th Street** - There are 4 blocks in need of new sidewalk infill along 15th Street. Clark Ave to Burnett Ave will not include sidewalk infill due to mature tree removal even though there is some existing sidewalk. Burnett Ave to Kellogg Ave will include sidewalk infill on both sides of 15th Street. Kellogg Ave to Douglas Ave will not include sidewalk infill on either side due to mature tree removal and public input. Douglas Ave to Duff Ave will include sidewalk infill on the south side of 15th Street and not be included on the north side due to mature tree removal and public input. ADA ramps will still be constructed where needed.

City of Ames staff has completed plans and specifications for this project with an estimated construction cost of \$744,435. Engineering and construction administration are estimated in an amount of \$111,665, bringing total projected

costs to the amount of \$856,100. The Asphalt Street Pavement Improvements are shown in the 2019/20 Capital Improvement Plan with \$1,000,000 in G.O. bond funding.

ALTERNATIVES:

1. Approve the plans and specifications for the 2019/20 Asphalt Street Pavement Improvements – 14th Street and 15th Street Project and establish March 18, 2020, as the date of letting and March 24, 2020, as the date for report of bids.
2. Direct staff to revise the project to accomplish all in-fill sidewalks even though mature trees will have to be removed to accomplish this alternative.

MANAGER’S RECOMMENDED ACTION:

Approving these plans and specification will result in lower street maintenance costs, improved area drainage, and providing a better neighborhood aesthetic. Staff held a public meeting to obtain input and comments were incorporated into the project design.

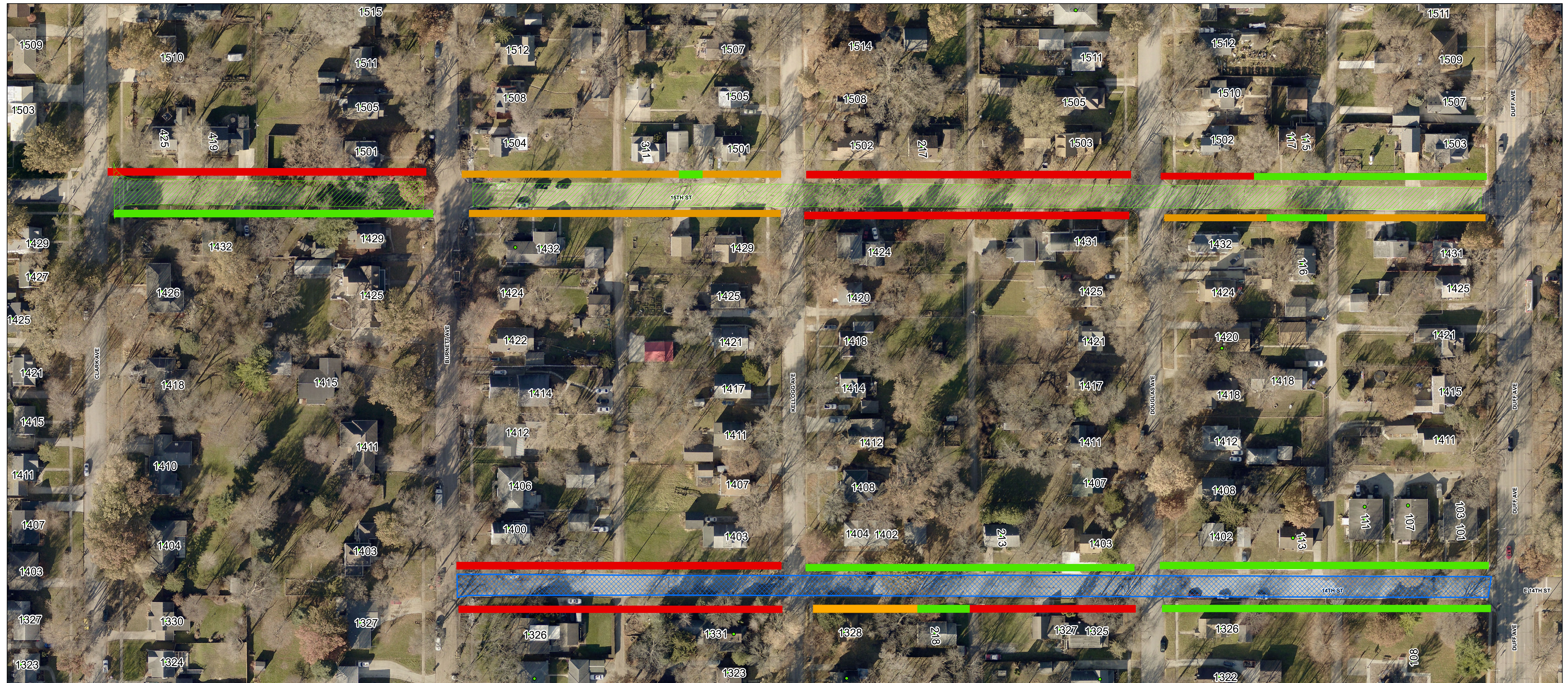
Therefore, it is the recommendation of the City Manager that the City Council adopt Alternative No. 1, as noted above.



2019/20 Asphalt Pavement Improvements

14th St. (Duff - Burnett)

15th St. (Duff - Clark)



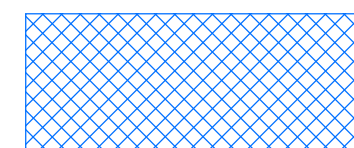
Current Sidewalk



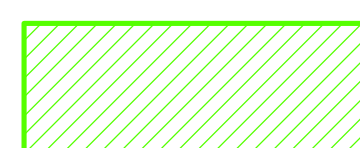
New Sidewalk Infill



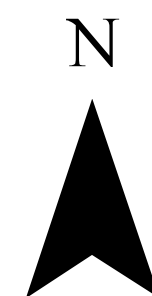
No New Sidewalk Infill



Phase I



Phase II



1 inch = 60 feet

