

COUNCIL ACTION FORM

SUBJECT: MCKINLEY DRIVE PARKING ORDINANCE

BACKGROUND:

The reconstruction of the new Fellows Elementary School is now complete and the traffic patterns utilizing the new site layout have developed. The Ames Community School District has requested that staff review the existing parking ordinance along McKinley Drive. There are currently two parking prohibitions for McKinley Drive contained in Municipal Code Section 18.33(3).

- 1) The first prohibits parking on both sides of McKinley Drive from Hayes Avenue to Van Buren Avenue only on days of regular classes at Ames High School between 7:30 and 9:30 AM.
- 2) The second regulation prohibits parking during the lunch kindergarten pick up time adjacent to a former driveway onto McKinley Drive that no longer exists.

Staff reviewed the existing conditions of McKinley Drive to determine the appropriate parking restrictions needed in this corridor. **According to current roadway and emergency standards, the existing 31' width of McKinley Drive only provides adequate width for parking on one side of the street.** Due to curves along the roadway and the location of existing fire hydrants, staff is proposing to prohibit parking at all times on the north side of McKinley Drive from Hayes Ave to McKinley Circle/Court and prohibit parking at all times on the south side of McKinley Drive from McKinley Circle/Court to Northwestern Avenue. (see attached maps)

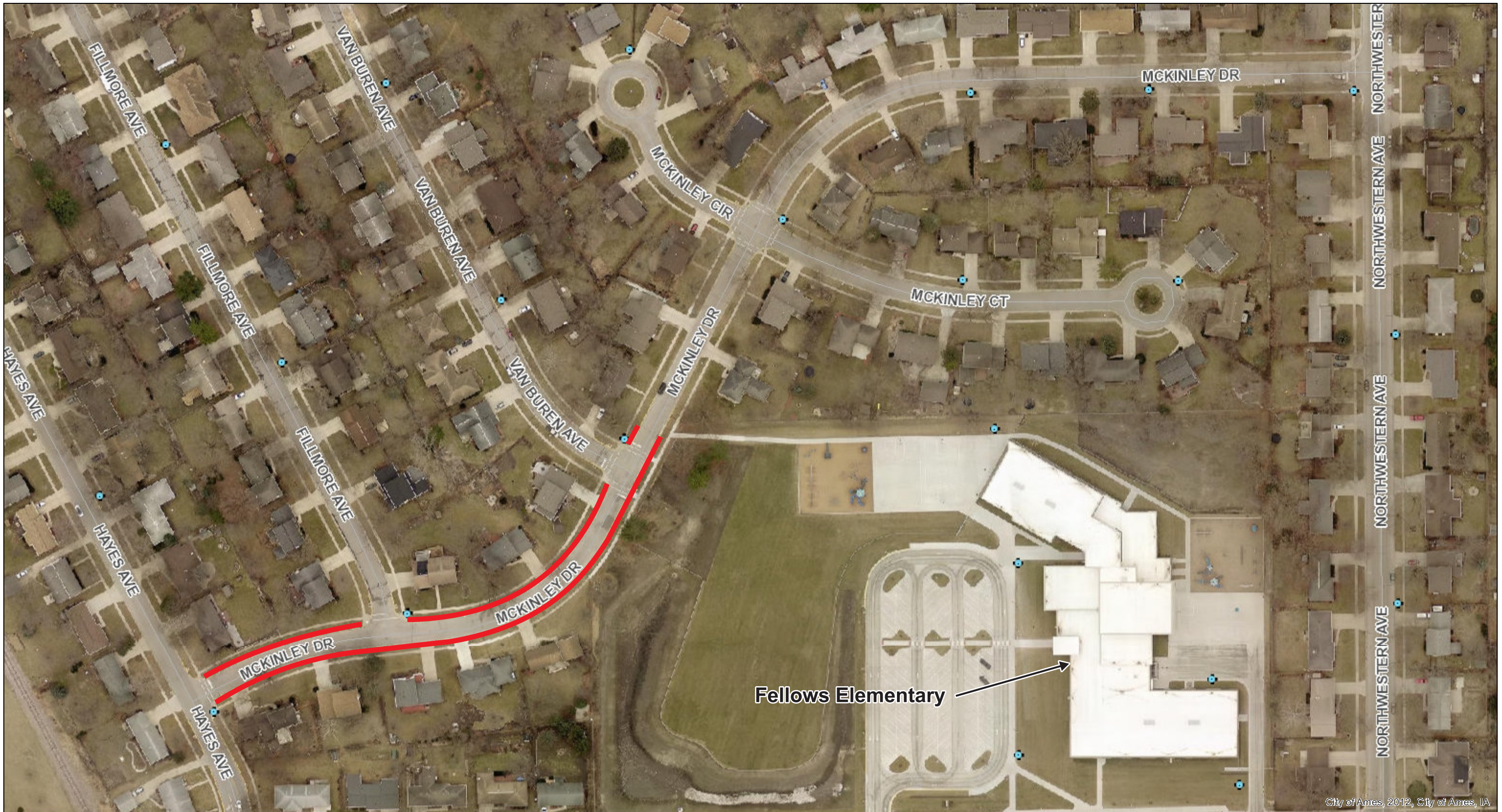
A letter was sent to adjacent properties along McKinley Drive to receive feedback on this proposed ordinance. Some comments were received from residents who would prefer to maintain parking on both sides of McKinley Drive from McKinley Circle/Court to Northwestern Avenue; however, this does not provide for adequate emergency operations and response to the school and the adjacent properties.

ALTERNATIVES:

1. Direct the City Attorney to draft an ordinance that prohibits parking at all times on the north side of McKinley Drive from Hayes Ave to McKinley Circle/Court and prohibits parking at all times on the south side of McKinley Drive from McKinley Circle / Court to Northwestern Avenue.
2. Do not make any ordinance changes at this time.

MANAGER'S RECOMMENDED ACTION:

By directing legal staff to make an ordinance update, it will be possible to improve the safety of our traffic system in this area by meeting current emergency operations and response standards. **Therefore, it is the recommendation of the City Manger that the City Council adopt Alternative No. 1, as noted above.**



McKinley Drive Parking Regulations

 Existing Parking Regulations 18.33(3): Parking prohibitions during school hours (7:30 - 9:30 AM)



NORTH

1 inch = 167 feet



City of Ames, 2012, City of Ames, IA



McKinley Drive Parking Regulations

----- Proposed standard residential parking regulations: No Parking at all times on one side of the street



NORTH

1 inch = 167 feet

© City of Ames, Iowa makes no warranties, expressed or implied, including without limitation, any warranties of merchantability or fitness for a particular purpose. In no event shall the City of Ames be liable for lost profits or any consequential or incidental damages caused by the use of this map.