

ITEM# 8
 DATE: 3/27/18

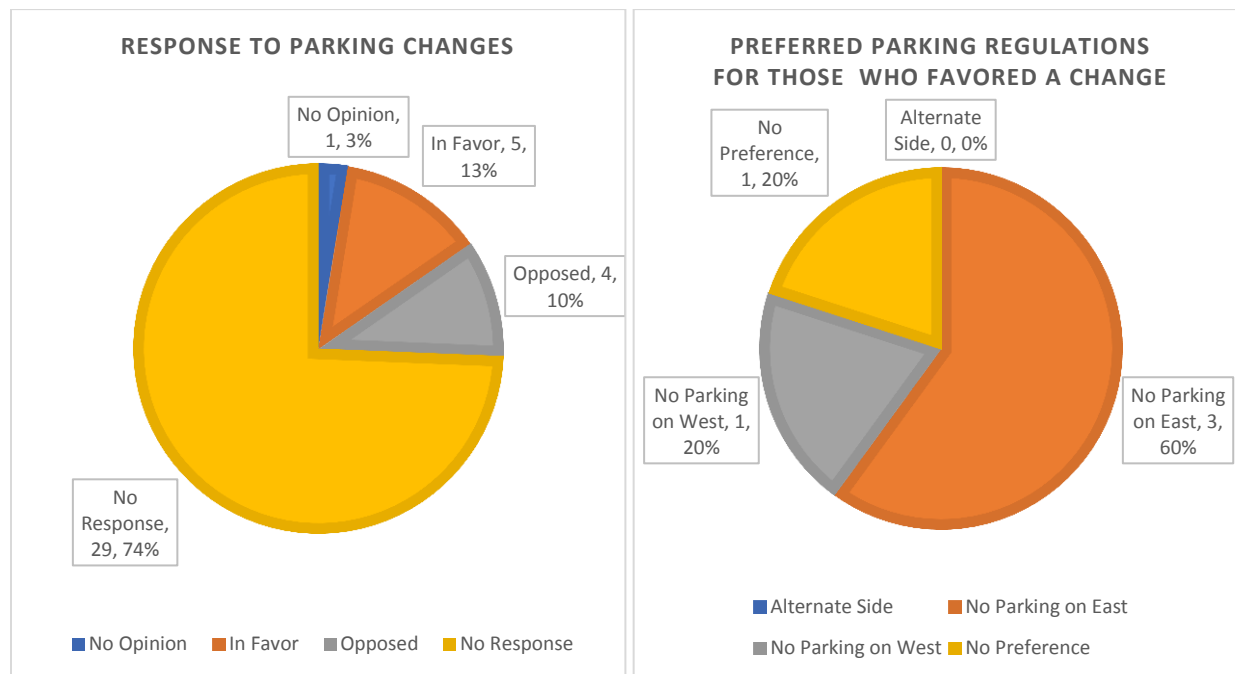
COUNCIL ACTION FORM

SUBJECT: PARKING REGULATIONS ON CRANE AVENUE

BACKGROUND:

In November of 2017, residents along Crane Avenue contacted the City with concerns of congestion due to the high volume of on-street parking. Currently, parking is allowed on both sides of the street making it difficult for two-way traffic to travel, especially during snow events. It should be noted that Crane is a 31-foot wide roadway, which **City standard for parking on this type of street is to allow parking on only one side.** Where possible, staff will prohibit parking on the side of the street where the fire hydrants are located to maximize the available parking on the other side of the street. These standard parking restrictions are also used to ensure emergency vehicles access.

In response to the request, staff sent out a mailing to each resident along Crane Avenue asking for their feedback. Staff asked residents if they favored the change or not, and if so that they preferred: 1) Alternating Side No Parking, 2) No Parking Eastside, or 3) No Parking Westside. The following charts summarize the feedback received:



It is also important to point out that of the 10 residents that responded to our survey, only 5 indicated a preference for making regulation changes. Therefore, it is likely that any change to parking could result in some negative response.

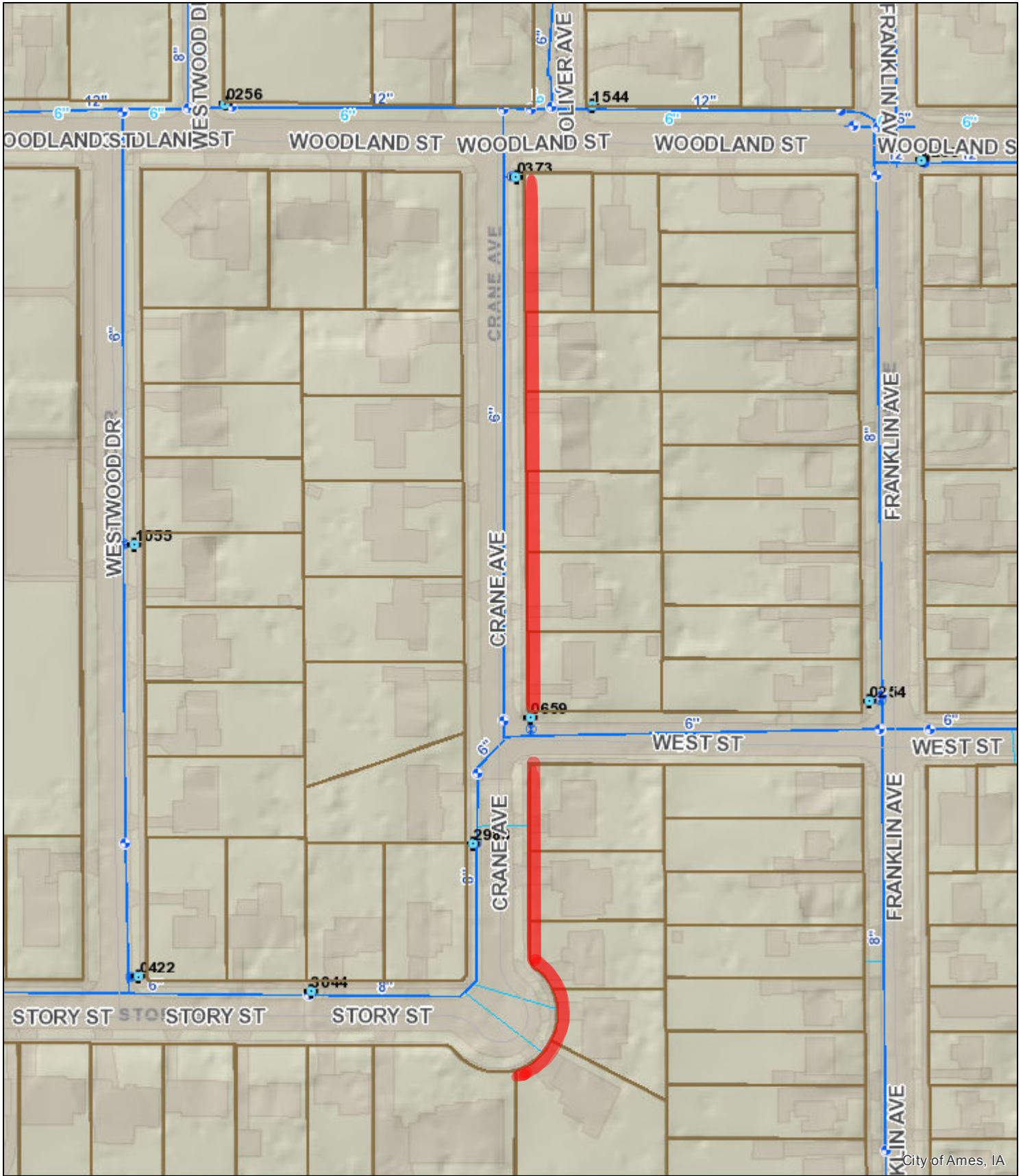
ALTERNATIVES:

1. Direct the City Attorney to draft an ordinance for Crane Avenue that restricts parking at all times on the **east side** of the street.
2. Direct the City Attorney to draft an ordinance for Crane Avenue that restricts parking at all times on the **west side** of the street.
3. Direct the City Attorney to draft an ordinance for Crane Avenue that establishes **Alternate Side Parking**.
4. Take no action, thereby **continuing to allow parking on both sides** of Crane Avenue.

MANAGER'S RECOMMENDED ACTION:

Even though there does not appear to be resident support for parking changes, by restricting parking on one side of the street the City will be able to bring Crane Avenue in to compliance with standard City policies for residential parking. It will also ensure that Fire, Police, and other Emergency response vehicles can properly access the neighborhood if needed.

Therefore, it is the recommendation of the City Manager that the City Council adopt Alternative No. 1, as described above.



City of Ames, IA



ArcGIS Web Map

Proposed No Parking



© City of Ames, Iowa makes no warranties, expressed or implied, including without limitation, any warranties of merchantability or fitness for a particular purpose. In no event shall the City of Ames be liable for lost profits or any consequential or incidental damages caused by the use of this map.

Date: 3/21/2018

1 inch = 167 feet

ORDINANCE NO.

AN ORDINANCE TO AMEND THE MUNICIPAL CODE OF THE CITY OF AMES, IOWA, BY ENACTING A NEW SECTION 18.31(374) THEREOF, FOR THE PURPOSE OF PARKING REGULATIONS ON CRANE AVENUE REPEALING ANY AND ALL ORDINANCES OR PARTS OF ORDINANCES IN CONFLICT TO THE EXTENT OF SUCH CONFLICT; PROVIDING A PENALTY; AND ESTABLISHING AN EFFECTIVE DATE.

BE IT ENACTED, by the City Council for the City of Ames, Iowa, that:

Section One. The Municipal Code of the City of Ames, Iowa shall be and the same is hereby amended by enacting a new Section 18.31(374) as follows:

“Sec. 18.31. REGULATIONS FOR SPECIFIC STREETS OR LOCATIONS.

...

(374) **CRANE AVENUE.** Parking is prohibited at all times on the east side of Crane Avenue.”

...

Section Two. Violation of the provisions of this ordinance shall constitute a municipal infraction punishable as set out by law.

Section Three. All ordinances, or parts of ordinances, in conflict herewith are hereby repealed to the extent of such conflict, if any.

Section Four. This ordinance shall be in full force and effect from and after its passage and publication as required by law.

Passed this _____ day of _____, _____.

Diane R. Voss, City Clerk

John A. Haila, Mayor