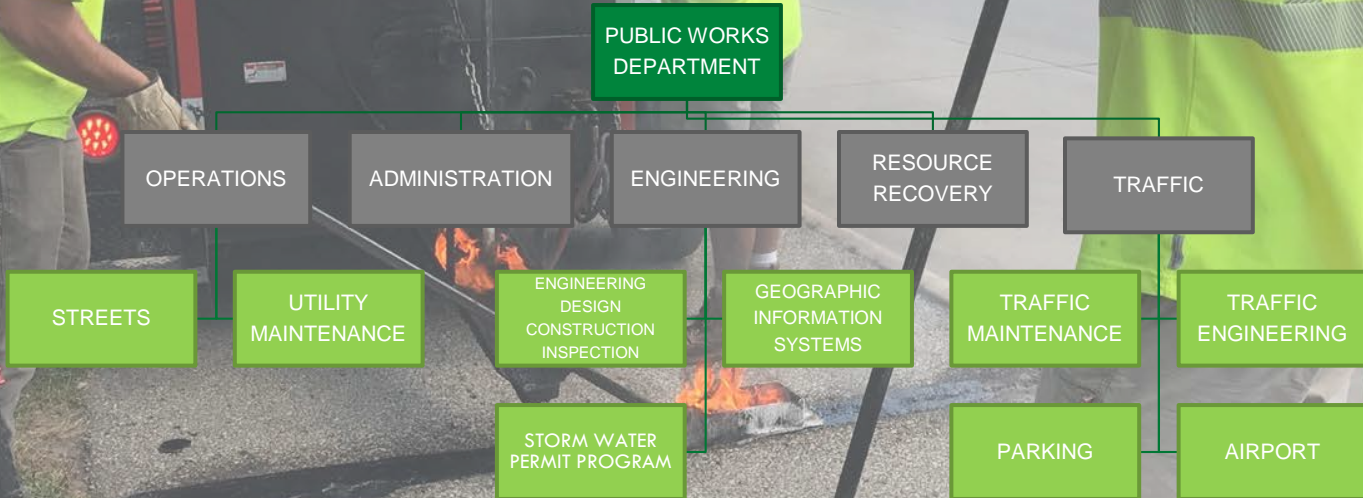


2018/19 BUDGET PRESENTATION



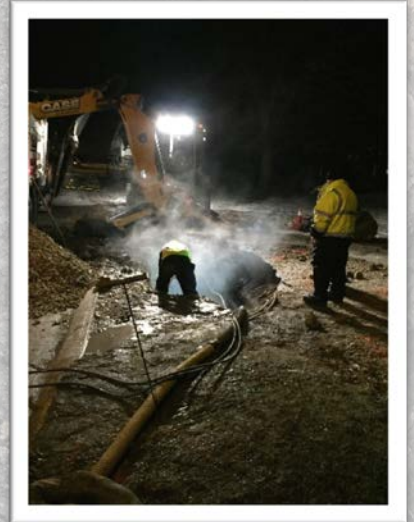
Public Works Department, Director John Joiner

Public Works Department



Utilities Program

- Water Distribution (pg.94)
 - Main repair, valves, hydrant flushing/painting
- Sanitary Sewer Collection System (pg.96)
 - Maintenance, SSSE
- Storm Water Permit Program (pg.98)
- Storm Sewer Maintenance (pg.102)
 - System Inspection, cleaning intake, and pipe repairs
- Resource Recovery (pg.104)



Storm Water Permit Program (pg. 98)

Smart Watershed

- ❑ Public Education/Outreach
- ❑ Cost Share Programs
- ❑ EcoFair
- ❑ Volunteer Resources



Storm Water Utility Fee Increase

Tier	# of Accounts	Impervious Area (SF)	Starting July 1, 2017
1	25,860	150-10,000	\$4.95
2	623	10,001-30,000	\$9.90
3	325	30,001-90,000	\$14.85
4	81	90,000 & above	\$44.55

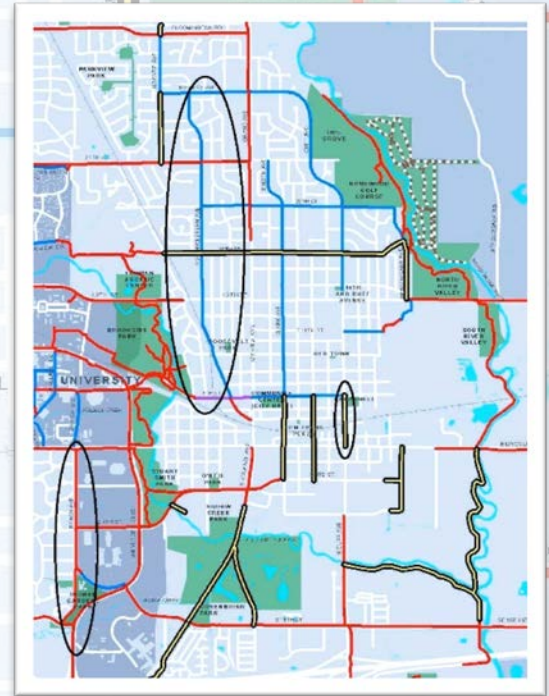
Resource Recovery (pg. 104)

- ❑ Rummage Rampage
- ❑ Diversion Study
- ❑ Refuse Derived Fuel Fee Structure
- ❑ Per Capita: \$10.50 beginning 2018



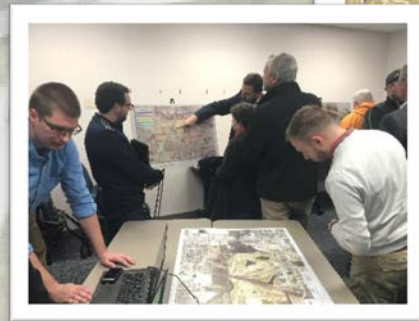
Transportation Program

- Public Works Administration (pg.118)
- Public Works Engineering (pg.120)
- Traffic Engineering (pg.126)
- Traffic Maintenance (pg.128)
- Street System
 - Street Maintenance (pg.130)
 - Street Cleaning (pg. 132)
 - Snow & Ice Control (pg.134)



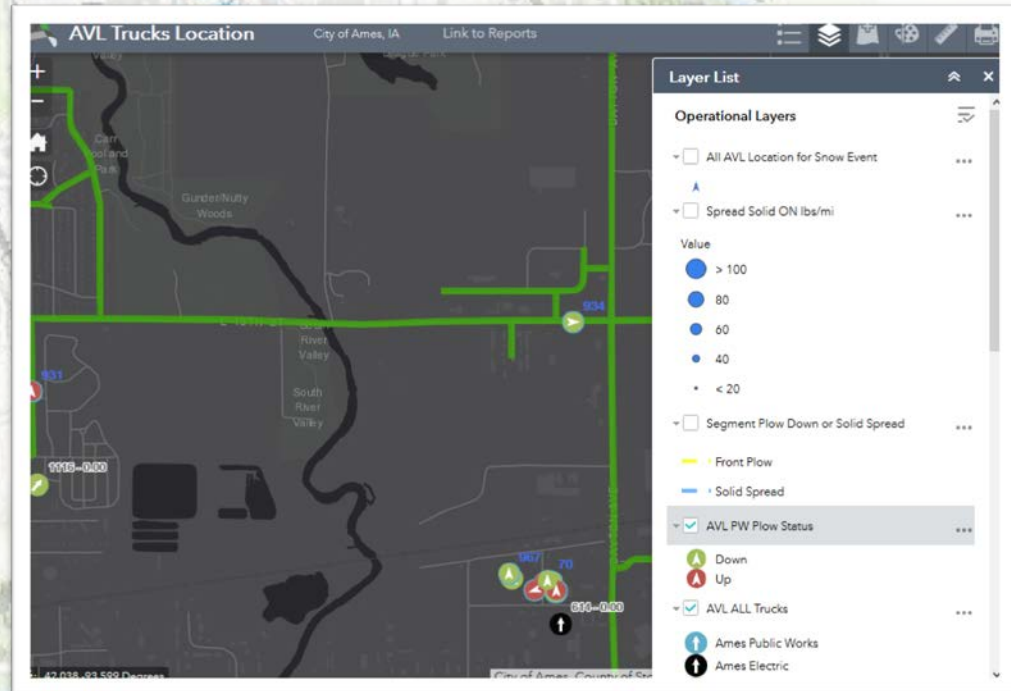
Engineering (pg. 120)

- Design, Construction, Inspection
- Geographic Information System (GIS)
- Development Review
- ROW Management
- Co-op Program
- Stormwater Permit



Engineering: GIS (pg. 120)

- Mobile Reporting Tool
- Automated Vehicle Location (AVL)



Traffic Engineering (pg. 126)

- Traffic Studies/Modeling
- Multimodal Coordination
- Complete Streets Plan
- Long Range Transportation Plan (LRTP)
- Street Lights (p. 58)



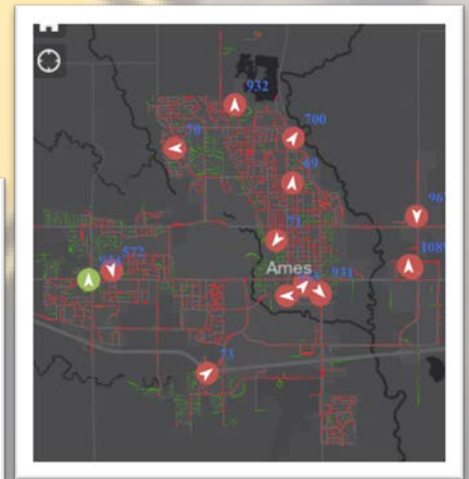
Traffic Maintenance (pg. 128)

- Signal/Sign Maintenance
- Radar Detection
- US 30 Light Columns
- Pavement Markings



Snow & Ice (pg. 134)

- Arterials/Bus Routes; Contract Partners
- AVL
- Operations
 - 19 events planned – 9 events to date
 - 36” planned – **21.5”** to date



Transportation Program (continued)

- Public Parking (pg. 146)
- Airport Operations (pg. 152)



PARKING OPERATIONS (pg. 146)

- ❑ Meter Rates/Overnight Limit
- ❑ Reserved Parking
- ❑ Special Events
- ❑ Mobile Pay App
- ❑ Vendor Tag



Airport (pg. 152)

- Airport Master Plan – 2018 Update
- Fixed Base Operator – Central Iowa Air Service





Thank You!

