

COUNCIL ACTION FORM

**SUBJECT: ALL INCLUSIVE PLAYGROUND & MIRACLE LEAGUE FIELD
LOCATION AND REQUEST FOR PROJECT DESIGN FUNDING**

BACKGROUND:

In July 2015, the Parks and Recreation Director was approached by representatives from the Arc of Story County and Friendship Ark Homes to discuss the possibility of adding an All Inclusive Playground to the City's park system. As a result of this discussion, it was decided to go to Ankeny to visit the playground and meet with Ankeny Parks and Recreation staff to learn more about the process Ankeny used to get the facility built. Ankeny's facility includes an All Inclusive playground, a Miracle League Field, and a building/shelter which houses a concession stand and restrooms. Ankeny had a Steering Committee raise funds, approximately \$1.7 million in cash and in-kind donations, to build this facility.

After this visit, there was a great deal of excitement to pursue not only a playground but a Miracle League Field as well. It was decided to see if other organizations had an interest in pursuing these facilities. In August 2015, an Exploration Committee with representatives from the Arc of Story County, Friendship Ark Homes, City of Ames, Mainstream Living, Ames Community School District, and Ames Foundation met to discuss interest in the project. This group felt there is a need for these features in Ames as there are over 500 children and 300 adults in Story County with intellectual and developmental disabilities. There is no playground like this or Miracle League Field in Story County. A universal concept would allow individuals of all abilities to play together on one structure.

This Committee developed the following scope and goals for this potential project:

- Include an All Inclusive playground
- Include a Miracle League Field
- Need adequate parking
- Need to address storm water issues
- Determine whether lights on the Miracle League Field should be included
- The project should be unique – especially the playground
- Project complete by July 31, 2018
- Neighborhood outreach is a must
- Involve stakeholders
- Utilize landscape structures if possible

- One structure in the community making it a destination playground

From September 2015 to January 2016, the Exploration Committee determined there is enough interest within the community for pursuing this project. The idea was presented to the Parks and Recreation Commission at its January meeting, was received favorably, and the Commission recommended \$50,000 be put toward the project. During the Capital Improvement Plan presentation to City Council in January 2016, the idea was presented and was well received. Council decided to hold off allocating any funding to the project until more details were brought forth.

In February 2016, a Steering Committee was formed with the following goals:

- Fundraise (\$1.5 million)
- Marketing and promotion
- Assist with design process
- Develop equipment replacement strategies

Steering Committee members include Sheila Lundt, Jim Mason, Matt Converse, Drew Kamp, Dana Barnard, Amber Corrieri, Jody Melcher, Mary Christy, Jay Lettow, and Paul Soddors. This group is very excited to accomplish the goals stated above and feel strongly about this project.

After reviewing all of the possible City park land options, in May 2016 staff presented the Parks and Recreation Commission with a recommendation to place an All Inclusive Playground and Miracle League Field at Inis Grove Park. After hearing input and discussing the topic, the Commission directed staff to do the following:

Put together a conceptual plan with an initial focus on Inis Grove Park, but not ruling out any other locations for the proposed All Inclusive Playground and Miracle League Field. Such a plan shall take into consideration the concerns of and include the Inis Grove neighborhood, Parks and Recreation Staff, and the Steering Committee while not ruling out the use of a consultant during this phase.

Staff convened an Advisory Group which included Inis Grove Park neighbors (Larry Ebbers and Martin Edelson), Steering Committee members (Jim Mason and Mary Christy), and a Parks and Recreation Commission Member (Ed Moran). This group's purpose was to provide input to the Parks and Recreation Director before another recommendation was brought before the Commission. The group met three times to discuss neighborhood concerns, options within Inis Grove Park, and other location options.

The information gathered from the Advisory Group was shared in a staff report at the Commission's August meeting. After hearing public comments, staff was directed to focus on two options in Inis Grove Park, as well as to discuss the possibility of the Middle School site with the School District.

At its September 2016 meeting, the Commission voted 6-0 to place the All Inclusive Playground and Miracle League Field in Inis Grove Park west of the tennis courts. The Commission also directed staff to give the Commission the opportunity to review the design before plans and specifications are taken to Council for approval. The reason for this direction was to ensure that the neighbors' concerns were considered and mitigated through the design process.

At the October 2016 meeting, the Commission discussed a request by the neighbors' for public involvement during the design process, that no lights be placed on the Miracle League Field, that no advertising signs allowed on the ball field fences, and that there be no public address (PA) system. The Commission decided to give the design consultant an opportunity to mitigate the neighbors' concerns regarding lights and the PA system before making a decision as to whether or not they should be included in the final design. However, staff was asked to consider setting a time in the evening beyond which lights or a PA system would not be used. The Commission agreed to keep the current policy of not allowing advertising signs on ball field fences, and also asked staff to develop a schedule as to how the Miracle League Field will be used for programs and/or user groups (e.g., Childserve, ARC of Story County, etc.).

PROJECT DETAIL:

The project will entail an All Inclusive Playground which means 100% of the components are accessible to everyone. The playground would have a rubber surface which provides the shock attenuation required by the Consumer Product Safety Commission and meets ADA standards for accessibility.

The Miracle League Field with or without lights is a small baseball/softball field with outfield fences 150-175 feet from home plate. It also has a rubber surface to provide accessibility and would include spectator seating.

Being placed at Inis Grove Park, the project may include adding paths, storm water detention, parking modifications, landscaping, and lights. Please note Musco Lighting has given up to a 50% discount on lighting when the lighting is associated with a Miracle League Field. Separate from this project, Council has allocated funding of \$250,000 for a new restroom to replace the one near Shagbark Shelter and \$125,000 for renovating the restroom adjacent the west parking lot.

At its August 2016 meeting, the Commission indicated the playground and field should be located at the same location. Several individuals with disabilities or people who work with individuals with disabilities felt strongly the playground and field should be close together to best accommodate individuals with mobility issues.

SURFACING OVERVIEW:

The surfacing for the playground and field will be a poured in place rubber surface. Staff contacted Surface America which installs poured in place rubber surfaces on approximately 800 playgrounds per year. In addition, they have done the surfacing on 50-60 Miracle League Fields.

For a playground, an asphalt, concrete or crushed stone base is first installed. Then a base mat of 2-4" of rubber is placed over the asphalt, concrete or stone. This base mat layer provides the shock attenuation needed to comply with the Consumer Safety Products Commission (CPSC) and the American Society for Testing and Materials (ASTM) standards. On top of the base mat, a ½" top layer is applied.

The rubber surface for the Miracle League Field is placed on either an asphalt or concrete base. On top of this base, only a ½" top layer is placed.

These rubber surfaces are porous and water will go through to the sub surface (asphalt, concrete, or crushed stone). The sub surface is installed so water will then drain to the outside edges. Depending on the material used, the product has a seven or ten year warranty. According to Surface America, the ball field surface has a life span of 15-20 years and the playground surface has a life span of 10-15 years.

In speaking with Tom Discipio, Executive Vice President of Surface America, he would never recommend putting a rubber surface in the floodway. He stated when the rubber surface is completely submerged under water, the urethane rubber, as well as, the bond between layers starts breaking down. He also pointed out that flood water stains the surface, it is too expensive to replace if/and when issues occur, and the warranty is voided when it floods. Since Surface America has been associated with Miracle League (approximately eight years), they have not located any fields in a flood plain.

Council did receive correspondence regarding a Miracle League Field in Green Bay, Wisconsin that has had surface issues and is looking to raise \$250,000 to replace the surface. That surface is a rolled out surface, has seams, and is a different product than the pour in place surface that Surface America provides. The current cost to replace a ball field surface that is 15,000 square feet with a pour in place surface is \$108,000.

MIRACLE LEAGUE FIELD USE:

Traditionally, Miracle Leagues are conducted on Saturday mornings. Ankeny, for example, conducts a six week spring season, April – June, and a six week fall season, August – October, with games being scheduled 9:00 AM – 2:00 PM. This includes three youth games and two adult games. The Des Moines and Ankeny Miracle Leagues do at times play each other on days other than Saturdays.

Since Miracle Leagues only use the field during the aforementioned times, opportunities exist regarding this field being used for additional activities for youth and adults of all abilities. These activities could include wiffle ball, kickball, tee ball, open play, outings for Childserve, the ARC of Story County, Friendship Ark Homes, and Mainstream Living.

PUBLIC INPUT:

There have been multiple public meetings when the All Inclusive Playground and Miracle League Field has been discussed that provided an opportunity for residents to express their opinions regarding these features. Attachment A shows the meeting minute excerpts pertaining to the playground and field.

January 14, 2016: The concept was first shared with the Commission at this meeting in a Staff Report with Lloyd Kurtz Park as the possible location. The Commission was in favor of the idea and approved a recommendation to City Council to include \$50,000 in the CIP for this project.

January 19, 2016: The playground and field concept was presented to City Council as part of the Parks and Recreation Departments proposed CIP. Lloyd Kurtz Park was presented as the possible location for the playground and field. Council members were supportive of the concept but did not want to include it in the CIP until more information was brought forward.

February 18, 2016: The playground and field was on the agenda for this Commission meeting as staff shared that through further review, Inis Grove Park may be a better location. Commissioners were concerned because of the sand volleyball courts to be constructed in the park. Staff was directed to have a public input session on this topic.

April 18, 2016: A public input session regarding this project was held in the City Council Chambers. Since the review of possible site locations favored Inis Grove Park as the preferred location, a letter was sent to 186 homeowners in the Inis Grove neighborhood informing them of the meeting. A Parks and Recreation e-newsletter, which contained information regarding the April meeting, was also sent to approximately 8,000 households. An overview of the potential project and possible locations were

presented to the approximately 25 people in attendance. Feedback was received and the questions asked and responses given are included in Attachment B.

April 21, 2016: Staff shared with the Commission an overview of the April 18 meeting highlighting concerns from the neighbors.

May 19, 2016: Staff presented a Commission Action Form recommending Inis Grove Park as the location for the playground and field. Upon hearing from people opposed or in favor of this location, the Commission directed staff to meet with neighborhood representatives and Steering Committee members to further discuss Inis Grove and other possible locations.

June 16, 2016: The Commission toured potential locations for the playground and field.

June – August 2016: An Advisory Group met three times. Group members were asked to serve as a liaison between the Advisory Group and the groups they were representing. Attachment C shows what was identified as neighborhood concerns and possible solutions.

August 18, 2016: Staff presented a staff report to the Commission regarding the discussions held by the Advisory Group. Staff was then directed to focus on two options at Inis Grove and the Middle School site.

September 15, 2016: Staff presented a Commission Action Form recommending Inis Grove as the location for the playground and field. Twenty-five individuals spoke either in favor of or in opposition to placing the playground and field at Inis Grove.

October 20, 2016: Commission discussed a request submitted by Larry Ebbers on behalf of the Friends of Inis Grove Park.

Attachment D provides the correspondence received by the Parks and Recreation Director throughout this process.

LOCATION SELECTION CRITERIA:

When looking at criteria, staff looked at what could be measurable and thus compared as objectively as possible. The following criteria, not in any particular order, were used to review potential sites.

- Visibility
- Easy to get to
- Enough space
- Adequate City owned parking
- Ability to handle storm water
- Appropriately sized accessible restrooms
- Not in flood plain

- Impact on the neighborhood

It should be noted that it is recommended the playground and field should not be isolated in a location where these are the only features at a location. One of the Miracle League goals is to make sure the playground and field are in a location where interaction between individuals of all abilities can interact with one another and feel a part of the community.

LOCATION OPTIONS:

Multiple areas, city owned and non-city owned, have been reviewed for this potential project. All parks were reviewed, however, the following list only includes the parks with the greatest potential for housing this project.

<u>LOCATION</u>	<u>CITY OWNED</u>
Area West of Dog Park	Yes
Baltimore Avenue Property	No
Brookside Park	Yes
Edwards School (old school)	No
Emma McCarthy Lee Park	Yes
Farmland on East 13 th Street	No
Furman Aquatic Center	No (Leased from ISU)
Helen Daley Park	Yes
Hunziker Youth Sports Complex	Yes (Leased to Youth Sports Complex Board)
Inis Grove Park Site 1 (Area west of tennis courts)	Yes
Inis Grove Park Site 2 (Open space southwest of Shagbark Shelter)	Yes
Inis Grove Park Site 3 (Miracle Field west of tennis courts; playground adjacent Red Oak Shelter)	Yes
Lloyd Kurtz Park	Yes
Middle School	No
Moore Memorial Park	Yes

North River Valley Park	Yes
Story County Park in Research Park	No

Many of these locations have been deemed not viable options for various reasons which can be found in Attachment E. At the August Commission meeting, Commissioners narrowed the list to three possibilities, Inis Grove Site 1, Inis Grove Site 3, and the Middle School. It was unknown at that time whether the Middle School location was a viable option and staff was directed to investigate further.

PROS AND CONS OF EACH OF THE FINAL THREE LOCATIONS CONSIDERED:

Inis Grove Option 1 (Attachment F)

Pros

- Features will be visible
- Is on a direct CyRide route
- Is easy to get to
- Adequate City owned parking
- Not in the flood plain
- Open grassy area was used for two baseball fields in the past
- Funding of \$375,000 currently allocated for new and/or renovated restrooms
- Already has lights in the park
- Has history of multiple programs being held in the park
- Able to handle storm water detention

Cons

- Do not know the impact of Sand Volleyball Courts
- Parking along 24th Street
- Loses green space
- Need to add family style restrooms
- Potential increase in traffic congestion

Inis Grove Option 3 (Attachment G)

Pros

- Features will be visible
- Is on direct CyRide route

- Is easy to get to
- Adequate City owned parking
- Not in the flood plain
- Open grassy area was used for two baseball fields in the past
- Funding of \$375,000 currently allocated for new restrooms
- Already has lights in the park
- Has history of multiple programs being held in the park
- Able to handle storm water detention

Cons

- Do not know the impact of Sand Volleyball Courts
- Parking along 24th Street
- Loses green space
- Need to add family style restrooms
- Potential increase in traffic congestion
- Playground and field are separated

Middle School (Attachment H)

Pros

- Features will be visible
- Is on direct CyRide route
- Is easy to get to
- Not in the flood plain

Cons

- Area proposed has elevation changes of greater than 10 feet
- Significant grading and/or fill needed
- Area proposed may not be large enough
- Current storm water detention area may not be large enough
- Potential conflict with school activities during daytime
- Need to add family style restrooms
- May need to add additional parking
- Potential increase in traffic congestion
- Need to develop a lease and/or use agreement

NEIGHBORHOOD CONCERNS:

As reflected in Attachment C, a list of neighborhood concerns have been identified. This list also includes potential ways to alleviate these concerns as brainstormed by the Advisory Committee this past summer. In addition, the design consultant will be asked to research additional ways these concerns could be mitigated. **Larry Ebbers, on behalf of the Friends of Inis Grove Park, asked the Commission to take action on four items, 1) Public input during the design process; 2) No lights on the Miracle League Field; 3) No advertising signs on the ball field fences; and 4) No PA system or at a minimum, limit the use to Miracle League games only.** His request is included in Attachment D. Below is what was presented to the Commission at its October 20 meeting.

Design Process:

There will be several opportunities for public input regarding this project. In addition, the Commission has requested the opportunity to review the design before Plans and Specifications are presented to City Council for approval. The reason for this request was to understand how the neighbors' concerns were being addressed. Following is an outline of how this project design process may look.

Consultant is hired to design the project

Staff meets with consultant regarding all aspects of the project

Consultant develops a design which may include options for certain aspects of the project

Staff meets with consultant regarding design

Consultant hosts public input/open house meeting to gather feedback

Consultant revises design if needed

Consultant hosts a second public input/open house meeting if needed to gather feedback

Consultant revises design if needed

Design is presented to Parks and Recreation Commission at a public meeting

Design is presented to City Council at a public meeting

Plans and Specifications will be finalized once fundraising is complete and presented to City Council at that time

As evident from this proposed process, there will be multiple opportunities for the public to provide input regarding the design. This is in addition to all of the input gathered to date that will be shared with the consultant prior to beginning design work.

Lights:

Since Miracle League games are generally played on Saturdays in the daylight hours, lights would not be needed for those games. However, this field could and should be used at other times as it will be a great amenity for the community. Activities could include t-ball, kickball, whiffle ball, open play, and outings for Childserve, the ARC of Story County, Friendship Ark Homes, and Mainstream Living. The addition of lights would provide greater flexibility as to when these activities could take place. Lights would be needed more in the spring and fall than in the summer when there is more daylight.

Although, Staff understands the neighbors' concerns, the consultant should be given the opportunity to mitigate these concerns through the design process. If mitigation cannot be achieved and the reasons for not having lights outweigh the benefits of having lights, then lights would not be installed. To say no to lights right now without allowing the consultant to develop remedies to solve potential problems is premature. Staff did have conversation with the Steering Committee Chairperson and he agrees with this approach.

Advertising:

Department policy does not allow signs (advertising, sponsorships, etc.) on ball field fences and there is no reason to change this policy. The Steering Committee will want to recognize donors and will need to do so in ways that does not violate this policy.

PA System:

Staff feels announcing the players' names and providing some play-by-play throughout the game does enhance the overall experience for players, parents, angels, and spectators. It also helps to communicate to the angels to protect fielders when a stronger or older player comes to the plate. **Similar to the lights, the consultant should be given the opportunity to mitigate noise concerns through the design process.** Using a portable system and facing speakers away from houses are some ways to mitigate the noise. A decision can then be made regarding a PA system and when it could be used.

FUNDING:

It is being proposed that the initial capital costs for the construction of the playground and field will be covered with approximately \$1.5 million in donations obtained by the Steering Committee. However, once constructed, the City would manage the facilities and be responsible to pay for any on-going operational costs as well as capital replacement expenses.

To assist the Steering Committee in this endeavor, the City Council also is being asked to allocate \$50,000 for the design of the facilities. Through the design process, design drawings and cost estimates will be developed. The Steering Committee believes that these two items will greatly enhance the Committee's ability to reach their fundraising goal.

ALTERNATIVES:

1. The City Council can approve the placement of the Miracle League Field and All Inclusive Playground in Inis Grove Park (Site Option 1) and appropriate \$50,000 from the Park Development Fund for the project design.

Under this alternative, the City would move ahead to hire a consultant to design the facilities at Inis Grove. However, before the final facility designs are completed and offered to the Parks and Recreation Commission for a recommendation and City Council for final approval, the design consultant will provide suggestions for mitigating sound and lighting issues.

2. The City Council can approve the placement of the Miracle League Field and All Inclusive Playground in Inis Grove Park (Site Option 1), but deny the request for the City to provide \$50,000 for funding the project design.

Under this alternative, the City Council would be indicating its willingness to assume the financial and management responsibility for the two facilities once constructed. However, the Steering Committee will have to provide approximately \$50,000 to the City from private donations in order for the City to initiate the project by hiring a design consultant.

3. Direct the Steering Committee to identify another location to serve as a site for the two facilities either on an existing City property or on some other property currently not owned by the City.

Under this alternative the City Council would be indicating that it is willing to take over the financial and management responsibility for the two facilities once constructed on what is currently City property or some other non-City property that can be purchased by the Steering Committee.

4. The City Council can decide not to become a partner in this project and reject the request to take over the financial and management responsibility for these two facilities once they are constructed.
5. The City Council can refer this request back to the staff for more information.

CITY MANAGER'S RECOMMENDED ACTION:

It appears from all of the input that has been provided regarding the All Inclusive Playground and Miracle Field that most, if not all, people who have offered feedback are supportive of the project. The difference of opinion centers on the preferred site for the facilities. For more than nine months, there has been discussion regarding possible locations, as well as, the pros and cons associated with each location. In all, more than 15 sites were reviewed, some City owned and some not. At the September Commission meeting, the Commission voted 6-0 (one member absent) to place the All Inclusive Playground and Miracle League Field in Inis Grove Park.

Inis Grove Option 1 is the preferred option based on input from potential users due to the two features being in close proximity to one another. This layout appears to be more favorable for anyone with mobility issues. Based on the City-owned properties that were analyzed, Inis Grove (Site Option 1) is the best location.

The Steering Committee members are willing to fundraise (approximately \$1.5 million) for this project and are very passionate regarding placing the playground and field in Inis Grove Park. Likewise, there are neighborhood residents and others within the community who are equally passionate about preserving the green space and leaving Inis Grove Park as it is. There are some of the neighbors who support placing the All Inclusive Playground in the park, however, they feel the Miracle League Field should be placed elsewhere. If the Council supports placing both features in Inis Grove Park, continued discussion with the neighbors needs to happen during the design process in hopes of mitigating as many concerns as possible.

In order to respond to this request the City Council must determine: 1) If the All Inclusive Playground and Miracle Field should be located at a City Park, 2) If the City should assume financial and management responsibility for both facilities once they are constructed, and 3) if City funds should be used to pay for the design of both facilities.

Given the fact these new facilities will be available for the total community and provide recreational opportunities that do not currently exist in Ames,

incorporating the Miracle League Field and All Inclusive Playground into the park system seems justified. The difficult question before the Council is then to determine the most appropriate site for these facilities. As is clear from the above analysis, no site within our park system is perfect. Pros and Cons have been identified for all potential sites. However, if the City Council believes it is preferable that these facilities be located in the Ames park system, it appears the preferred site, as recommended by the Commission, is at Inis Grove Park (Site Option 1). Given the fact that the Steering Committee is offering to raise \$1.5 million for a project that will be donated to the City, the investment of \$50,000 towards the design of this project seems appropriate. Therefore, it is the recommendation of the City Manager that the City Council approve Alternative #1 as described above.

ATTACHMENT A

Parks and Recreation Commission Meeting Excerpts

Excerpt from January 14, 2016 Parks and Recreation Commission Meeting

C) Staff Report: All Inclusive Playground and Miracle Field

Abraham reported that an all-inclusive playground is a playground where every component is accessible to anyone. It is not just for children with disabilities, but parents or others with disabilities. Abraham and representatives from Arc of Story County and Friendship Ark Homes determined after observing the Ankeny inclusive playground that this is a project that they wanted to pursue. Mainstream Living, the Ames Community School District and the Ames Foundation have all been interested in this project and have been involved in the discussions. The Ames Foundation is interested in serving as the fiscal agent for this project which will cost approximately \$1,500,000. The group has been contacting potential steering committee members throughout the community. There has been some conversation regarding location. The area needs to be accessible, have adequate space, available parking and be easy to get to. Lloyd Kurtz Park has been identified as a potential location. The Kiwanis clubs in Ames and Nevada are really behind this. They are willing to reach out to other communities to see if they would like to be involved.

Sheila Lundt (806 Furman Drive) Ames Foundation

The mission of the Ames Foundation is not just beautification projects. Part of the mission is recreational opportunities in our community. The Foundation will help with the steering committee and fund raising. They will also be the fiscal agent for this project.

Tricia Crane (Arc of Story County)

Her nationally based organization oversees special Olympic activities for people with intellectual and developmental disabilities. She feels this is another added component to serve the needs of the community.

Mike Miller (Ames Noon Kiwanis)

Kiwanis members have been involved with Miracle League for many years. He states that one of the best things you can do is volunteer and watch the kids and parents. The participants are part of a team. They have shirts and hats. They all run the bases and score and have a good time. Landscape Structures is also involved with Kiwanis as well. The local Kiwanis have a goal to get this started here in Ames. Every group approached has indicated they want this to happen, that they will maintain this, and they will volunteer for this. Lloyd Kurtz was a big part of the Noon Kiwanis and the Ames Noon Kiwanis planted the bushes and trees at that park. The Kiwanis are ready just waiting for the Commission to hop on board.

Rowan inquired about the role that Parks and Recreation would have in this besides the use of the park.

Abraham stated that the steering committee will do the fund raising and the Ames Foundation serve as the fiscal agent. Staff's role is to support the steering committee and have a say in the final design.

Rowan asked if this (a miracle field) could be used during the Special Olympics. Crane stated that it could be and that the Arc has kickball teams and softball teams that would use this. She could see this being a regional draw. Ankeny has teams from all over the state come to use their field. She would like to keep it open for use all the time and not just used on Saturday mornings.

Johnston asked about scheduling issues. Abraham stated that Miracle League is always on Saturday. Abraham said that who schedules the leagues will have to be worked out. Every child has a helper on the field as well. Ankeny said that it is easy to get people to volunteer. Johnston states that she is very excited by this project.

Rowan moved for the Ames Parks and Recreation Commission to support this concept, to direct staff to continue to move forward in a supportive roll to make this a reality, and that staff move forward holding conversations with the neighborhood and Stone Brooke Church. Schaben Second. No Discussion. No Opposition. **Motion Passes.**

Excerpt from February 18, 2016 Parks and Recreation Commission Meeting

a. Inclusive Playground and Miracle League Field Update

Abraham informed the Commission that if the City is putting \$50,000 into this project the City has to take the lead.

Abraham also gave pros and cons of possible locations including Lloyd Kurtz and Inis Grove. Johnston was concerned about using Inis Grove. Abraham stated that several programs have been moved out of the park.

Johnston thinks this is a nice alternative. She thinks that this would be really good for the community.

Moran asked where the new sand volleyball court is relative to this project. Abraham showed a map with the location if Inis Grove were to be used.

Excerpt from April 21, 2016 Parks and Recreation Commission Meeting

Discussion: All Inclusive Playground and Miracle League Field

Abraham reported that the steering committee for this project is not a city committee. The steering committee would like to help with three items, fundraising, marketing and promotion, and assisting with the design of this project. Staff is considering several locations. The field, playground and a restroom facility will fit in Lloyd Kurtz Park, however there is no room for parking. This is a concern from the City's point of view. There has been some conversation regarding other locations. Inis Grove seems to be a good choice for many reasons; there is ample green space, money is already set aside for building restrooms and restroom renovation, and the park is easily accessible for visitors. This is a sensitive issue for the neighborhood as the sand volleyball program is already moving to this park.

Abraham hosted a public input meeting on Monday evening. Notice of the meeting was included in an email sent to the current Parks and Recreation database and letters were sent to 130 park neighbors. Abraham gave history of the project and spoke to attendees regarding location options and what criteria will go into choosing a location. Abraham reported to the Commission that no one was opposed to the project but some opposed the Inis Grove location, especially the Miracle League Field.

Neighbors questioned why school sites were not included in the list of potential locations. Abraham reported that the School District indicated they did not have money or land for this project. In Ankeny, there were issues with the playground on a school site due to the safety and security concerns of the district.

The location of the former Kmart on South 16th St. was also mentioned. Abraham reported that Kmart is still paying the lease on that location. Once that lease is up the owner will have motivation to get someone else in there.

The Inis Grove neighbors have more concerns regarding the Miracle League Field than the playground. They are also concerned that another facility is being considered in the park without knowing the impact of sand volleyball on the neighborhood.

Abraham asked the Commission what they would like staff to research and bring to the next meeting.

Bierbaum asked if there was a reason why the playground and the field can't be at different locations. Abraham stated that they could be separated. Abraham's opinion is that like peas and carrots or peanut butter and jelly it makes sense having them together. Urbandale is putting them in the same park but not next to each other. Bierbaum asked if North River Valley could be used. Abraham explained that the rubberized surface has to have some flexibility. For the field, the rubberized surface is more firm and could possibly be placed in River Valley. The playground surface is thicker and more porous and a flooding situation would result in silt filtering into and ruining the porous surface.

Litwiller asked if storage space was needed. Abraham said that the field is a flat surface with no raised bases or mounds so any storage needs would be minimal and could be incorporate into the restroom facility. Litwiller asked for a break down costs by location, including restrooms and costs of separating the facilities. Abraham will get ballpark figures for things like restrooms. He said Staff can put together a rough financial analysis on things including items that are currently planned that may be a benefit to this project.

Johnston thinks there is overwhelming support for this project. She feels there is some overuse of Inis Grove, but thinks this would be great for the community.

Jim Mason (Steering Committee Chair)

The Committee has been working on this a year already just wants to keep moving.

Excerpt from May 19, 2016 Parks and Recreation Commission Meeting

b. **Commission Action Form: All Inclusive Playground and Miracle League Field**

Abraham gave a presentation regarding the potential All Inclusive Playground and Miracle League Field. Abraham also went over the comments from the April 18, 2016 public input meeting.

The Commission then discussed locations in various Parks as shown in the presentation.

Larry Ebbers (224 24th St.)

Ebbers stated that he is representing the neighborhood and spoke against the project. Though they applaud the effort to include amenities for persons with disabilities, however they do not want to include these amenities in Inis Grove Park, the neighborhood or by their homes. They are concerned about traffic, parking, and lowering property values if this facility is built in Inis Grove.

Abraham stated that the Commission could ask for no parking along 24th street to ease the congestion shown in Ebbers' presentation. Ebbers stated the neighborhood did not want it to be no parking as they have guests that want to park on 24th. Bierbaum asked what the neighborhood wanted the parking to look like. Ebbers feels that parking on one side only would work, however the neighbors did not want to make any recommendations.

Ebbers concluded that the neighborhood feels the Ames Parks and Recreation Staff has not fully researched this project including locating this facility outside of Ames.

Pamela Riney-Kehrberg (204 24th St.)

Riney-Kehrberg spoke against the project stating her opinion that Moore Memorial

Park and McCarthy Lee Park are safer options. She feels that Inis Grove is not a safe place and represents danger.

Mary Anne Russell (3314 Polaris Dr.)

Russell spoke in favor of the project stating she feels this park is a great idea for people with disabilities like her. A park where people in the community can “see us for what we can do not what we can’t do.” From her perspective Emma McCarthy is not safe with the river and big hills.

Warren Frank (2219 Broadmoor)

He said he echoes the presentation against the project given by Ebbers. He is also concerned about light pollution. He expressed his belief that Emma McCarthy is a better place. It would be a destination where you would go to play.

Clyde Wolter (132 Broadmoor Cr.)

Spoke against the project. He stated that Broadmoor Circle is very tight and difficult to park on.

Drew Kamp (304 Main St.)

Kamp spoke in favor of the project stating he is a part of the Steering Committee. Priorities for this project are safe areas to drop off and pick up participants, properly built restrooms and accessible by CyRide. Miracle League does recommend that the playground and the field be together as they serve many of the same people. Kamp stated that safety is very important. He feels that parking concerns could be addressed by the City Council. The disabled and their families need to have good access to this facility. The lighting would be controlled and not detract from a night sky. The Steering Committee would like to resolve the location issue and continue to move forward.

Martin Edelson (2417 Duff)

Edelson stated his concerns about safety with travel on Duff. He would like more information regarding loud speakers, noise pollution and future expansion. Edelson states that the project is pitting the committee against the neighbors of the park. His hope is that the Commission favors the residents of the neighborhood.

Shelly Jaspering (823 Duff Ave)

Jaspering spoke in favor of and is excited for this project. She has been a wheelchair user for 10 years and has wanted to play softball. She likes the central location. She states that wheelchair vans cost around \$60,000 and that she knows she is lucky to have a van but many do not. HERTA and CyRide won’t go to some parks. Jaspering stated if someone in a wheelchair was dropped off at the top of the hill at McCarthy Lee she did not know how they could get to the park. Moore Memorial and McCarthy Lee both have hills where you can’t use a wheelchair and she has had to ask strangers to help her.

Libby Franke (2219 Broadmoor)

She is disappointed that things they were assured in past meetings would be addressed have not been addressed. Franke stated her opinion that sand volleyball was placed there because they were less vocal. Now this has been described as a destination. She feels like it is going to start looking like a theme park and we should be charging admission. There have been a lot of contradictions and unanswered questions. She asked if this is what we want for our city.

Jim Mason (2016 Amherst Dr.)

Mason stated that the Steering Committee was not formed to build a Miracle Field at Inis Grove Park. The people on this committee wanted to provide an opportunity for an underserved part of our community. Inis Grove Park is where the Committee feels is the best location. Delays are impacting the community the Committee is trying to serve.

Feilmeyer asked Mason what considerations were given to other locations. Feilmeyer agrees serving the underserved is a goal. For her, what works for the community is another goal.

Mason continued top priorities are how can we reduce the cost and make this happen. We feel confident we can raise the money to do this project in Inis Grove. The Committee has looked into Nevada, and other parks in Story County. At this point Inis Grove is our favorite place. He stated the Committee is not out to ruin somebody's park, they are out to add to it.

Barb Ebbers (224 24th St)

States she can see both sides but feels the people who are proposing this (Miracle Field and All Inclusive Playground) don't live there and asked the Commission "Do we have to destroy the park?"

Elizabeth Baird (2207 Duff Ave)

Baird would like the Commission consider locating the two items in separate locations.

Bierbaum feels like the project is admirable but he is torn because it sounds like if it is not in Inis Grove it won't happen. Bierbaum also agrees that the traffic near Inis Grove is a problem. Bierbaum is not ready to state that he does not want this in Inis Grove.

Rowan feels that the traffic piece is not our responsibility but maybe we could help this situation.

Rowan asked what the next step would be. Abraham stated that if the Commission would approve this location it would then go the Council and ask to release funds for the design. Could get some conceptual plans and then go back to the neighborhood to find something that works and then ask the design firm to get some conceptual drawings, plans and specs. That would help the committee to know how much to fundraise.

Rowan asked how much longer the two step process would take. Abraham stated Staff would need more direction from the Commission regarding what they would want to see as to one location, multiple locations etc.

Feilmeyer stated that she senses that there is some discomfort with option #1 and that she is very supportive of the playground. For her, adding on the field is what is causing discomfort. She is not convinced that all locations for the Miracle Field have been ruled out.

Bierbaum has been trying to figure the location out and the only option he can see finding out if it is feasible is to raise some area at North River Valley.

Rowan feels that we need this in our community but still thinks there is some work to be done.

Bierbaum still feels that the playground should go in Inis Grove.

Feilmeyer understands wanting to move things moving along, but feels that it is premature to say this is it and spend \$25-30,000 on figuring out where it is going to be in Inis Grove.

Moran feels like this project deserves the right spot and shows our need for more space as our community grows.

Abraham stated that the Parks Master Plan was done in house and goes through 2018. Staff would like to bring someone in to do a really comprehensive plan which would take into consideration where the community is growing.

Johnston said that it does feel like it came on rather quickly. Her belief, based on her history with Staff, is that that due diligence has been done. Johnston was disappointed that she did not hear from anyone say that they support a Miracle League or that they support an All-Inclusive Playground.

Riney-Kehrberg alleged from the floor that no one had approached ChildServe. She accused the Committee of not thinking about speaking with ChildServe even though they work with every disabled youngster in the area.

Abraham stated that on the Committee there are representatives of The ARC of Story County, The Friendship ARC Homes and Mainstream Living who all deal with individuals with disabilities...

Riney-Kehrber interrupted Abraham to say "adults"

Abraham continued that the Committee members have had conversation with ChildServe and that they are supportive of the project. Riney-Kehrber stated that those are adult serving organizations. Abraham explained that she stated that the Committee did not think to speak to ChildServe and he is informing her that the Committee had spoken to ChildServe and they were supportive of the project.

Larry Ebbers wanted to state from the floor that the neighborhood did not object to the project.

Litwiller is of the opinion that if the Commission keeps pushing this back, continuing to research and research and research the community could lose out on an amazing opportunity for Ames.

Rowan believes that the accessibility part of this is really important. Rowan feels that it needs to be in Ames for the accessibility and transportation. .

Ebbers from the floor again feels like you can raise money with conceptual ideas.

Rowan feels that there are no conceptual ideas created at this time because there is no location and that is the problem.

Jay Lettow (8401 Waybridge, Johnston).

Lettow stated that he has worked in Ames for 15 years, first as the Executive Director for the Arc of Story County and now at the Iowa State Foundation. He understands how hard it is for the Commission when there is a very passionate group from the neighborhood that is opposed to the project. He feels that they cannot be successful if they separate the projects. If they stick with the criteria including nothing in the flood plain and other considerations that Inis Grove is the only place to put this feature. He reminded the Commission members that they are representing the entire city and have to make this decision for the whole community.

Shelly Jaspering from the floor feels that it could be neutral colors. She has a new Habitat house built in the historic district which shows that something new can come into the neighborhood and fit in.

Matin Edelson from the floor stated his opinion that this is going to be more successful than anyone expects. He feels the people in the neighborhood deserve some respect and deserved to be listened too.

Barb Ebbers from the floor pointed out that there was a sentence in the beginning of their presentation indicating that they were advocates for this project and it was not that they didn't want the project; they don't want the ball field (which is part of the project) in their neighborhood.

Moved by Bierbaum, seconded by Rowan directing Staff to work with the City Manager and other City Staff to addressing parking/traffic issues on 24th Street and on Broadmoor Avenue. No discussion. No opposition. **Motion Approved.**

Moved by Feilmeyer to direct staff to put together a conceptual plan with an initial focus on Inis Grove Park, but not ruling out any other locations for the proposed All Inclusive Playground and Miracle League Field. Such plan shall take into consideration the concerns of and include the Inis Grove neighborhood, Parks

and Recreation Staff and the Steering Committee and not ruling out the use of a consultant during this phase. Seconded by Rowan. Discussion: Bierbaum asked if the motion gives Staff what they need. Abraham stated that he had a pretty good idea of what the Commission was looking for. Litwiller inquired regarding cost of this phase. Abraham stated that he did not know. No Opposition. **Motion Approved.**

Excerpt from July 21, 2016 Parks and Recreation Commission Meeting

Miracle Group Update

Abraham reported a committee which includes Inis Grove neighbors will look at a variety of options and discuss ways to address neighborhood concerns. There are also additional locations that have been brought before the committee. Some of the other options include Baltimore Avenue, 13th St across from the softball complex, Edwards School or Ames Middle School.

Bierbaum stated that the field in Ankeny was subdued and not nearly as unattractive as the ones on the presentation slides.

Johnston asked how the fundraising group was reacting.

The group feels there are donation opportunities out there and they are in a holding pattern and are anxious to get moving.

Rowan asked about further discussion regarding the parking situation near Inis Grove. Abraham reported that neighbors would like to see parking on 24th Street be north side only and parking on the east side only on Broadmoor.

Excerpt from August 18, 2016 Parks and Recreation Commission Meeting

a. Staff Report: All Inclusive Playground and Miracle League Field

The Commission directed staff to put together a plan including, but not limited to Inis Grove Park. Keith Abraham went over the makeup of the focus group studying this issue which included two Inis Grove neighbors, two members of the project steering committee, Abraham and Moran. This group serves in an advisory role and will not be making a recommendation.

Abraham spoke on the committee's findings regarding each suggested location.

Abraham asked the Commission for clarification so staff has a clearer direction regarding a recommendation.

Rowan feels that it is clear that the two pieces should be located together. She states that she knows there are concerns in the neighborhood but there have been many positive responses as well.

Bierbaum stated his opinion that the Edwards, Lloyd Kurtz, Ames Middle School and the Dog Park locations should be ruled out. He feels A, B or C are the most viable options. Bierbaum is interested in hearing feedback regarding the option with both features in the same park but in different locations. Bierbaum does not want to consider any property that is not owned by the city.

Feilmeyer agrees with Bierbaum that ideally they should be in the same location but do not need to be on top of each other. Feilmeyer feels it would be perfectly okay to use land owned by the Ames School District and asked Abraham if the focus group discussions had changed his mind about a recommendation.

Abraham does not feel Lloyd Kurtz or Edwards are very good options. Abraham does feel Option C is an interesting option as it helps address parking issues and does not eat up prime green space in the park. Option B is tough from the standpoint that you are now putting everything in one area along with sand volleyball and people would want to park in the same lot. There are a lot of unknowns if you wanted to put it by the Ames Middle School.

Abraham said he would probably go with Inis Grove Option A or C if he had to make a decision tonight.

Bierbaum asked if the middle school site would be open for families during the day. Abraham indicated that would be a discussion point with the School District.

Larry Ebbers (220 24th St Ames)

Ebbers stated that he has visited on several occasions with Superintendent Taylor. He alleges that the School District is very interested in the project. He asks the Commission to wait until things can be worked out with the School District. He feels like Ames Middle School would want the opportunity to use this facility as well. Ebbers states he understands there are community wide concerns about the City and the district working together but this could be a great opportunity.

Bierbaum asked Ebbers if the school used that area for other activities.

Ebbers stated "No they do not; it is not used for anything".

Bierbaum asked if the space was used at all for practice fields.

Ebbers stated that the space was not used at all. He explained that it is the space that was originally intended for the pool which is why a parking lot is there.

Abraham stated that Gerry Peters indicated the space in question is used for practice fields and for PE classes.

Ebbers stated that Dr Taylor was open to moving those kinds of things.

Ebbers asked to see any positive emails members have received regarding this project. He was told he would have to make a formal request to the Ames City Clerk.

Bierbaum asked what the thoughts are in the neighborhood regarding Option C which is having both amenities in Inis Grove but in separate locations within the park. Ebbers said the neighborhood has not discussed that.

Feilmeyer asked Thompson about the maintenance of this kind of structure. Thompson said that it would need to be checked for safety, wear patterns on the surface, garbage and other general items.

Bierbaum stated that options A, C and the Ames Middle School are the options that are still on the table. Rowan agrees with Bierbaum. No one disagreed.

Mary Ann Russell (3314 Polaris Dr).

Feels like it should be at Inis Grove. She states it would feel safer if it is out in the community instead of “hiding us from the community because we are just like you guys, I know we are different but we are just like you guys.”

Tom Russell (1206 Michigan Ave)

Stated that from everything he heard at the previous meeting as well as what he has heard tonight he feels like Inis Grove is the obvious location. Feels like Option A and Option C are the good options.

Shelly Jaspering (823 Duff Ave)

She feels that keeping the playground and field together is a good plan. People may use one while waiting to use the other and support each other. She interacts with people of all ages and may want to use the playground with her niece before her game starts.

Jim Mason (2016 Pinehurst Dr)

Mason stated that he has been on the Steering Committee and the recent focus group. It is his opinion that fundraising would be difficult for a facility that was not in the control of the Parks Department.

Larry Ebbers (220 24th St)

He stated his opinion that this will change fundamentally the use of the park and the neighborhood feels that the sand volleyball destroyed the upper park.

Feilmeyer asked Ebbers if his purpose in asking the Commission to defer for a month was so that the Commission could explore the Ames Middle School

site. He stated that yes in part but it was also so his constituent group could be informed that the decision would be made at the September meeting. Feilmeyer stated that she felt we are all in agreement it is a worthy project and a great benefit to the community. Ebbers agreed but does not want the project in Inis Grove.

Bierbaum asked Abraham what would happen if a recommendation was made by the Commission.

Abraham explained if the Commission made a motion tonight we would go to the City Council to ask money to be appropriated to start the design and for conceptual designs that the steering committee could use for fundraising. The Council could say no and refer back to staff or they could say that the work that the Commission has done was good and they liked the location and appropriate the funds to have the conceptual designs done.

Bierbaum would like to see the neighborhood have some feedback on the conceptual designs.

Abraham feels there will be some public input as the Steering Committee would like to know what the people like and don't like before they go out and fundraise.

Larry Ebbers (220 24th St)

Ebbers asked the Commission to let the focus group meet with the Ames Middle School before making a recommendation.

Martin Edelson (2417 Duff Ave)

He wishes to second Ebbers request to meet with the school again before making a decision. Edelson reported the middle school in Ankeny uses the Miracle League Field as a regular part of their PE Program. That it is a useful amenity to them and is a regular part of classes during the school day. He feels that the Ames Middle School could program the field similarly during the school day, they would have good uses for it, and it would be a welcome addition for them.

Amber Corrieri (2012 E 13th St)

She stated she was representing Mainstream Living which serves more than 500 adults with disabilities. Corrieri started her comments by thanking Abraham for the amount of time and effort Staff has put into this project. She hopes there is not opposition to creating recreational opportunities for children and adults with disabilities. She understands there are disagreements on where this facility should be placed. She states that Parks and Recreation staff and the Steering Committee have been working on this for many, many months and have considered and examined many sites looking at the various issues settling on Inis Grove for a number of reasons. Accessibility is the primary and most important item. She asked the Commission to consider the people this park is intended for as some have severe physical disabilities and

use a variety of mobility devices. The Steering Committee's goal was for those individuals to be able to access the facility easily and safely. Cy Ride access was another reason Inis Grove was the choice of the Steering Committee as well as cost to develop. She informed the Commission that the Steering Committee is still recommending Option A as the most viable option and is not in favor of pursuing the Middle School site due to the accessibility and cost issues. This is an inclusive facility but it is intended to target an underserved population that deserves the right to play and to interact in their community in meaningful ways.

Rowan asked Corrieri if the Steering Committee had conversations with the school district. Corrieri informed Rowan that Gerry Peters (Director of Facilities, Planning & Management) represented the School District on the original committee that met before the Steering Committee was formed. Peters attended several meetings about this project and then informed them that the School District loves the project but would need to bow out as they did not see the district having a role in this including district property. The Steering Committee has been operating under the assumption for many months that the School District was not interested.

Larry Ebbers (220 24th St)

Ebbers asked Corrieri if the Steering Committee had considered the Middle School site recently. Corrieri responded that they had.

Beirbaum asked if it makes sense to explore the Middle School site if the Steering Committee is not supportive.

Corrieri stated that if Inis Grove is eliminated the Steering Committee would go back and look at other City owned property. She stated that because of the previous conversations with the School District they have not considered district properties. She stressed that the Steering Committee was not going to draw a line in the sand. "If the School District came forward and said "Absolutely, hands down, we would love for you to build this here. We'll make whatever agreement you want." We would look at that.

Nikki Messenbrink (603 E 16th ST)

Messenbrink has worked with persons with disabilities for the past seven years. This population will be grateful wherever this field and park is built. She also works at Friendship Ark homes and wanted to inform the Commission that dayhab programs are being directed toward community integration. Her concerns with the Middle School site are that the school will be programming the facility during the day when we want to bring our clients. Her concern with splitting the facilities into two locations is because these special needs clients need emergency medical services. She feels that the field and playground should be close together and close to parking.

Bierbaum asked if the field would be used during the day for adults with disabilities.

Messenbrink stated that they are currently taking clients to Ankeny and to Courage League Gym in Urbandale. They are very active and we get them out as much as possible. Those car rides are pretty stressful. They are very excited at Friendship Ark to be getting these facilities.

Tom Russell (1206 Michigan Ave)

Russell believes that we are having the same discussion that was had in May. There is not much new being said. We know there is a group of neighbors who thinks this is going to mess up their park, a large city park. He pointed out that Ebbers used the phrase destroy the park. Russell feels that we are not destroying the park we are changing it. The nature of a growing city is that things change within that city. It seems like there is a lot of community members who think this would be a positive change and a small group of neighbors who don't want to change how they have lived for several years.

Larry Ebbers (220 24th St)

It is not our park, it is a city park and we have some concerns about it.

Shelly Jaspering (823 Duff Ave)

Jaspering says it is a city park and it should be available to everyone in the city to use. She has had trouble in the last ten years getting her wheelchair to things. It would make life better, make her more active, and help her meet more members of the community disabled or not.

Litwiller appreciates the feedback both positive and opposing. She like the Inis Grove location but is open to the possibilities at the Middle School location.

Fielmeyer agrees and feels a month isn't going to change anything. Everyone who has spoken says that they support the project and the question is where. She is not ready to make a decision tonight.

Abraham stated the only reason making a decision tonight was brought it up because he was asked if a motion could be made without a Commission Action Form.

Martin Edelson (2417 Duff Ave)

He feels that the city needs to make it a priority to make parks accessible.

Jim Mason (2016 Pinehurst Dr)

Mason asked what is going to change between now and a month from now.

Rowan asked if there could be some definitive feedback from the District by the next meeting. Abraham stated that if the Facilities Committee indicated it was in favor of the placement of this at the middle school location it would then go to the Ames School Board with the recommendation.

Bierbaum stated that even if the middle school site was a go, he still may not think it is the best match. We need to make sure that people understand that it's not - go see if the Ames Middle School will do it and if they will then that's where we'll go.

Ebbers interrupted Bierbaum stating let the process work.

Bierbaum continued. He feels that the information Staff brought to this meeting was exactly what the Commission was looking for and that part of the process has worked really well.

Feilmeyer stated if the Ames Middle School comes back a potential option the Commission would like to hear feedback from Staff on if it is a *recommended* option.

Abraham stated that he will be coming back in September with a recommendation for either Option A or C in Inis Grove or the Middle School Site.

Bierbaum would also like feedback from the A and C Options in Inis Grove.

Litwiller wants feedback on what works best for the people that will utilize the park on all three options.

Jim Mason (2016 Pinehurst Dr)

No one thought there was going to be a recommendation tonight. He wants it to be the coolest darn thing there is no matter where it is. We would hire someone who has that experience and get feedback from everyone. It will be a comprehensive plan.

Rowan wants to state that the Commission wants to do their diligence and do the right thing.

Excerpt from September 15, 2016 Parks and Recreation Commission Meeting

a. Commission Action Form: All Inclusive Playground and Miracle League Field

Abraham stated that he will not go into the CAF in great detail as it has been gone over in previous meetings. He explained that during the August meeting Commission asked Staff to look at both options in Inis Grove and the Ames Middle School. Abraham, Ebbers and Gerry Peters (Director of Facilities Planning & Management for the Ames School District) met regarding the flat space in question which would be a viable option for this project. The Middle School currently uses this flat space for practice and PE as well as holding this space for future expansion. The area the School District would be willing to have discussion

about has a 10-12 foot elevation change, water detention areas and some protected area near the creek which Staff feels make it unsuitable for this project.

Abraham explained that they did revisit Option C where the amenities are both in Inis Grove but not right next to each other. Abraham stated that based on comments from individuals with mobility issues Staff does not recommend this option.

Bierbaum asked about the Inis Grove restroom project. Abraham stated that the renovations or replacements of the restrooms would not reduce the amount of restrooms.

Rowan asked Abraham how confident he was that the drawing shown is where the field will be. Abraham stated the drawings were to scale. The dugouts would be on the outside of the drawing shown and there would be some paths, landscaping and some bleachers.

Abraham went over Option A, which is the staff recommendation. Bierbaum asked about programs. Abraham informed Bierbaum that adult soccer, youth soccer and ultimate Frisbee have already been moved out. Abraham also stated that he has been observing sand volleyball and the players are parking in the parking lot.

Abraham also wanted to speak about Inis Grove Park in general. He has been asked if these facilities (Miracle League Field and all inclusive playground) are a part of the Parks Master Plan and they are not. With regards to the deed itself, when Walter Grove sold this land to the city in 1949 the deed stated "Premises to be used solely and only for park purposes for the benefit of the general public in and around the community of Ames, Iowa." Staff feels this proposed amenity fits with the deed and fits with the Parks and Recreation mission statement.

There are several options for storm water detention which could include using the ravine, bioswales, or sub-surface detention such as a French drain. These options will be determined by the design firm.

With regard to the parking, Abraham stated that the Miracle League participants will use the parking lot. There could be some volunteers who will park in the street in an effort to leave the parking lot open for the families. There will be no other recreation programs going on in the park at that time. Abraham stated the only programs we know for sure we would use this for are T ball and Blastball. Mainstream Living would like to use it in the afternoons. The ARC of Story County would like one evening per week. Child Serve would want to use this in the daytime. Abraham stated that he can't give a definitive answer on how much the facility will be used.

Moran asked how many parking spots were at the park. Thompson stated there are 100 (later corrected to 95) in one lot and approximately 40 in the other.

Moran asked Abraham about how many parking spots were being used during the games he observed in Ankeny. Abraham informed Moran that about 60 cars were present when he was there to observe. Abraham stated that the 9:00 AM game had just started and there was also a flag football game and baseball practice going on as well.

He said that the games were 2 innings and took about 40 minutes to play. After the game some went over to the playground and some left.

With regards to noise, Abraham shared that at the game he observed in Ankeny there was PA system which announced each child. Abraham stated that the kids get excited to hear their names over the sound system. The PA was used just for the Miracle League, they did not play music, however the announcer did do a little bit of a play by play during the game as well as warning "Angels protect your fielders." when an older or stronger person came up to bat. The Steering Committee will have to be able to see what they can fundraise for as far as lighting or PA systems. Design is going to be key with all this. The engineers will have to help us with the technical aspects.

Bierbaum asked if this would be a city owned and managed facility. The Steering Committee will fundraise the money for construction. It would be a city facility managed by Parks and Recreation.

Feilmeyer asked Abraham to clarify for the audience the makeup of the Steering Committee.

Abraham read the names of the Steering Committee members and explained they are business owners, fundraisers, parents with children who have disabilities and others. He informed the Commission that the Parks and Recreation staff will not be doing any fundraising.

Feilmeyer asked Abraham who would pay for the upfront work on the design and engineering. Abraham informed her that the Steering Committee has not raised any funds. The Parks and Recreation Commission would make a recommendation to the City Council to donate funds upfront if they are planning on supporting this project with a donation. Those funds would pay for the engineering and the design drawings which the Steering Committee would use for fundraising purposes.

Bierbaum asked who would approve the designs. The City Attorney and Purchasing Manager agree it should be a City project and the design, plans and specifications would be approved by the Council.

Feilmeyer asked Abraham why this was before the Parks and Recreation Commission and what decision was needed from the Commission. Abraham explained that the commission members need to make the decision on whether or not you support the project and recommend where it should be located. Then it will go to the City Council who can support it and approve up front funding the way

it is, approve funding but not approve the location, or not approve the location or funding.

Bierbaum asked if the neighborhood will have any input on the design. Abraham stated that once the design work is started they will take into consideration the concerns of the neighborhood. Then once they have a couple of preliminary design options there can be an open house for feedback similar to the process used to develop Roosevelt Park.

Feilmeyer asked what if any effort was made to raise funds to acquire land for this project. Abraham said that question would be for one of the Steering Committee members.

Moran stated that there were 29 speakers cards and gave instructions to the speakers.

Pamela Riney-Kehrberg (204 24th St) Spoke in opposition to this item. Make clear she is in favor of these types of amenities but she doesn't like the location. She showed a power point presentation against this project. She does not think this location is best for her son because of his sensory disorder. This location will preclude use by her son and others with this disorder.

Clyde Walter (132 Broadmoor Cr) Spoke in opposition to this item. Walter visited Ankeny and relayed his negative feelings regarding the Miracle Field located there as he continued the power point presentation opposing this project started by the previous speaker.

Warren Franke (2219 Broadmoor Ave) Spoke in opposition to this item. Franke continued the power point presentation started by the previous speakers with slides showing his views of what this would look like. He feels like it should be at the Middle School so that the school could use the facilities during the day for PE.

Larry Ebbers (220 24th St) Spoke in opposition to this item. Ebbers continued the power point used by the previous three speakers. He alleges that Inis Grove has been the only site considered since February. His opinion is the School Board would make a decision regarding the Middle School site not the Facilities Committee. Ebbers listed the other properties Staff has explored for these amenities and asked the Commission for those properties to be reconsidered. His major objection is to the Miracle League Ball Park. He feels it will change the park and there will no longer be an opportunity for "lots of groups to come".

Feilmeyer told Ebbers she did not think it was fair to say Inis Grove has been the only location considered since February. She stated that Staff and the Parks and Recreation Commission have bent over backwards to exhaust all of these options.

Larry stated that this was his perception based on notes he has in his possession from a Kiwanis meeting.

Bierbaum informed Ebbers that the Kiwanis did not get that information from the Parks and Recreation Commission. He also stated that Ebbers has been at these meetings where Keith has been directed to try and get rid of rivers in Ames and things like that.

Ebbers agreed.

Bierbaum stated that the Commission is not the Kiwanis and they have been making Staff do a lot of work.

Ebbers insisted that "it's perception".

Feilmeyer feels this goes really to the heart of what the Commission does. There are two incredibly important competing issues. That preservation of park space is an incredibly important consideration and the second, which is also an incredibly important consideration, is a group that is underserved in our community. This is what makes their job as a Commission very, very difficult.

Feilmeyer asked Ebbers if he would agree that of all the existing parks that Inis Grove was the best location.

He stated that as staff has designed it, it is the only location and an easy solution but he questions if it is the right solution.

Bierbaum said he had questions for Abraham relating to issues Ebbers brought up regarding the design options, the nonprofit, the transparency, and who is responsible for the park.

Abraham stated that a letter was sent out to 186 residents and an email was sent out to around 12,000 persons in our Parks and Recreation database. He stated that 25 people showed up for that input session. .

Feilmeyer asked what is currently being done in that open space area. Abraham stated the space was used for open activities. Parks and Recreation is not programming anything in that space.

Bierbaum asked about the shelter usage. Abraham stated that shelters have been added to the system with the development of park space. Abraham stated that 59% percent of the shelters reserved at Inis Grove are not in conflict with programs such as sand volleyball or the proposed Miracle League games. When programs would be held and use the east parking lot, 25% of the reservations are at Walnut and Red Oak shelters and use the west parking lot. About 16% were at Shagbark Shelter that may or may not be a conflict when they are held at the same time.

Amy Stevenson (1319 16th St) Spoke in opposition to this item.

She stated as a homeschooler the parks are a large part of her family's regular routine as well as mental and physical well being. Stevenson feels Inis Grove is not the best location for this opportunity. Just because there is open space it does not mean that it doesn't have a purpose. She understands this process can feel like a battle between the greater good and the neighborhood's biased desires. She lived on 24th St. and observed the park and saw many people use the green space for many activities. They are not against a park of this type, just not at Inis Grove.

Tom Russell (1206 Michigan) Spoke in support of this item.

He explained that he has adult children with disabilities. He truly believes that Inis Grove is the best place for the Miracle Field and Accessible Playground. He stressed that it is a visible community park in the middle of Ames and this underserved community of children and adults with disabilities "who live in our community need to be seen in our community". He feels there will be plenty of room left for other activities. He feels Keith Abraham has done a lot of research and put together a great presentation and put the misinformation that has been disseminated out to rest. He had no idea there would be detailed slide shows and this much organized opposition.

Rachael Beckwith (1508 Kellogg Ave) Spoke in support of this item.

She states that she is lucky to have no disabilities herself or in her family. She would love for everyone in our community to be able to use that park. She feels only good would come of placing it there. She states she uses the park multiple times per week and she would love to see people using and enjoying this space.

Zahia Wineinger (1514 Kellogg) Letter in Support of this item read by Rachael Beckwith.

Wineinger writes that she has heard concerns about this proposed development. She can empathize with those concerns however; she feels it is pertinent that the City moves forward with these facilities. She has seen the proposed layout and she does not think it will impact noise and traffic in negative ways. She feels disabled members of our community deserve to enjoy outdoor activities without the burden of traveling out of town. Her letter states that when we exclude people from activities we are telling them that they don't matter and it impacts them negatively for their entire lives. The joy this all inclusive park and miracle field would bring to the children and adults is important to the community as a whole. Please consider the positive impact to our community.

Mary Christie (2825 Clayton Dr.) Spoke in support of this item.

Christie stated she is a member of the Steering Committee and the Focus Group. She is also a parent of a child with special needs. She states that everyone agrees this is a good idea and the question for the Commission is where. City staff and the Steering Committee have done their due diligence as outlined in the Commission Action Form. Staff has shown that they are willing to continue to work with the neighbors as the project is designed and she trusts that they will do so.

Kathy Schnable (3629 Woodland) Spoke in support of this item.

Schnable is a parent of a child with special needs and wanted to speak about the feeling of exclusion families can have when there is a special needs child. That a group like the Steering Committee, wants to include all children in the parks facilities means a lot to her. She takes issue with the fact that all the sites in town have not yet been explored. She attended the May meeting with her special needs son intending to speak in favor of this item. She did not speak as the meeting ran long because Keith Abraham took the time to go through every single potential location and give the pros and cons of each. She wanted to mention another advantage of Inis Grove Park. It is a beautiful park where people like to go for picnics with their families. She pointed out that if you are a family with a person with special needs and you are invited to go on a picnic, often there might be nothing for your child to do. She asked the Commission to consider if they would want to always have to take their child to the Ames Middle School or would you want to take you child where they could socialize with other families. She has studied the Parks Master Plan and she feels Inis Grove Park would be very well suited for these facilities.

Bill Hass (2313 Broadmoor) Spoke in opposition to this item.

Haas states he appreciates efforts to serve people with special needs in our community but what bothers him is that the procedure being followed shows ignorance of why Inis Grove Park exists. He states that the land was donated to be used as a park. He claims to know the original land owner's definition of a park did not include any programming and only included green space. Parks were places to be visited and may only have a few picnic facilities. He does not understand why we have to choose a site and hire a design team. He states what is really needed here is to include the "disadvantaged" and what could be accomplished if done well.

Drew Kamp (304 Main St) Spoke in support of this item representing the Ames Chamber.

Thanked Director Abraham for all his work on the project and making sure the Steering Committee is diligently looking at all the options. He informed the Commission that this project is a community project in a community park and will have far reaching benefits to community, residents and visitors alike. While he respects the concern of the Inis Grove neighbors, he feels this project is well suited for and clearly meets the intended use of Inis Grove Park as shown by the City of Ames Master Parks Plan. He also quoted the parks plan as follows:

As the city of Ames progresses into the 21st century, it will be challenged to provide residents with responsive, equitable and quality services. The Park Master Plan must be adaptable so that it can respond to ever changing needs and opportunities that will face the city for years to come.

He feels the Miracle League Field and inclusive playground is a practical and logical use of the space. He feels it will have a positive impact on the neighborhood and the community as a whole. He stated that according to the Ames City Engineer there are approximately 1.4 accidents per year around 24th

and Duff Ave area which he feels is pretty safe. This location is on CyRide which is extremely important. He wants to remind the Commission what is truly important, serving a critical population that is too often pushed into the shadows and underserved. It will not only serve people of all ages with physical and developmental disabilities, it will serve parents who have been unable to play with their child at a playground or grandparents limited mobility to play with their grandchildren. He asked the Parks and Recreation Commission approve Alternative #1.

Feilmeyer asked Kamp if there had been an effort by the Steering Committee for land acquisition. Kamp said he was not on the committee at the beginning stages and could not speak to that. Feilmeyer asked Kamp if he agreed that Attachment D, Option A is the best option. Kamp agreed that the Steering Committee feels that is the optimal and most practical option.

Bierbaum asked Abraham if choosing the location first is consistent with how the city would do a development like this. Abraham used the example of Furman Aquatic Center, stating several locations were looked at and once the location was chosen the design work started happening.

Rowan asked if the CyRide stop had been a part of the discussion. Kamp stated that work would be done by the traffic engineer.

Dana Barnard. (1502 Duff Ave). Spoke in support of this item
Barnard is also a member of the Steering Committee. She would like to speak to the Commission on the benefits of placing this facility in Inis Grove Park. She stated she is a long time physical therapist in the community and her expertise is working with people of all ages with disabilities. She explained that if placed in Inis Grove, this facility would be close to the hospital which is important as this population often has problems with seizures and increased falls. It would also be out of the flood plain cutting down on mold and mildew which effects this population more than the average population. A person with disabilities is 25 percent more inactive than their peers because of barriers they face, lack of transportation, lack of funds and lack of accessible facilities. Locating this facility in a central location will give people of all ages better opportunities for wellness. There is access through CyRide and they won't have to pay to use this facility. In terms of Inis Grove, it is a premier park with beautiful green space which, in her opinion, is all the more reason to locate this facility there. We need the opportunity for those people with disabilities (including her daughter) to enjoy the facility and the rest of the park.

Jennifer Ellis (301 S Sheldon Ave) Spoke in support of this item representing the Friendship Ark.

Ellis states that the Commission has the chance to advocate for individuals with disabilities. She explains that for years these individuals have been told you can't work live or play here and have been shown that they are not valuable members of their communities. The Miracle Field and all inclusive play ground is an opportunity to have something the rest of us take for granted, the opportunity to

recreate, socialize and belong. As far as safety is concerned she states that for many years youth soccer was held in Inis Grove and she agrees traffic increased for a few hours while the youth in Ames had the opportunity to participate in an athletic event. It is her opinion that the participants and those involved were safe, pointing out that the average traffic accident rate is only 1.4 per year in that location. She asked the Commission not to allow a few in opposition to influence their opportunity to do what is right

Russ Wilson (2820 Thompson Dr) Spoke in opposition to this item. Wilson lives near Camp *Camaria (sic)*. Being a block away from the park means he can hear the noise from the camp and the shelters. Is concerned about the project having a PA system and he does not think it is right. He also feels as though losing any green space results in kids having nowhere to play pickup games.

Moran asked Abraham if the facility would be open for people to use for pickup games. Abraham replied that the intention is for the facility to be open to everyone.

Kristin Pates (2914 Somerset Dr) Spoke in support of this item. Pates states that she supports the project and the Inis Grove Park Location. She feels that the location has been fully vetted and trusts the process that has been used. She stated that she was intimately involved in the development of Roosevelt Park and was satisfied in the process in every way.

Susan Teas (2003 Polk Dr) Spoke in support of this item. Teas informed the Commission that her children had been involved in a variety of activities in Inis Grove including soccer, flag football, baseball and graduation parties. It continues to be a beautiful park in a beautiful location. The difference she sees now compared to when her children were young is that the park is empty. There are no soccer or baseball fields. The green space is beautiful but it does not invite people to come in and play. She applauds the extensive study that has been done and completely agrees that the only appropriate placement is in the open space west of the tennis courts in Inis Grove Park. She wanted to point out that an inclusive playground is not a place for persons with disabilities but one that includes all ages and abilities who can enjoy playing together safely in a beautiful park in the midst of our city. It does not exclude anyone.

Denny Howell (2309 Kellogg St) Spoke in opposition to this item. Howell has safety concerns. He feels that he didn't know anything about this. He states even though there were e-mails sent out, people may not have opened them. He wants to put this facility at the Middle School and does not understand why we are not putting playgrounds that all kids can use throughout Ames.

Abraham informed Howell that there are ADA requirements for playgrounds and most of the playgrounds have surfacing that is ADA compliant. Unfortunately many of the playgrounds are 20 year life structures. Some have ground

components and some have transfer stations. None of the playgrounds in our system can do what this is going to do.

Howell has concerns about the liability of the insurance for the City of Ames. He asked what this would do to the City's liability insurance if a child runs out. He alleges he does not want to delay the project but he wants more to be done on the Middle School site. He asked Staff to add to the Capital Improvements Plan to put in one park, maybe even Inis Grove, a playground for the "handicapped kids" but put this main facility at the Middle School.

Bierbaum inquired on the liability aspect and if it would be different from any other park. Abraham pointed out that there are many parks on corners including Roosevelt and Duff Avenue parks.

Judy Parks (1809 Woodhaven Cr) Spoke in support of this item.

Parks informed the Commission that her younger brother is profoundly disabled with the developmental age of approximately two. At the time he was born society had fewer options and opportunities in terms of residential, educational and recreational support. Her parents had two options, keep her brother at home or surrender his custody to the state (which would remove him from the community in which they lived) and institutionalized. She stated that his needs and the time spent to meet his needs were so great that the other five children in her family would be neglected, so her parents had to choose to surrender his custody. Her brother grew up very far from the family.

She states that the system has changed in a very positive manner with the realization of society that people with mental and physical disabilities should be in the community where their family and support system lives. Her brother now lives in Ames in a Friendship Arc home where he gets to be a part of the community. She states that she is in support of this location. It has the suitable topography and infrastructure as well as shelters and shade. In her opinion the central feature is that it is not marginalized or isolated. She does not like that we are a community that provides better recreational opportunities for our dogs than our people with disabilities and their families. Parks continued that if someone's lack of support is because they have no experience interacting with or even seeing people with disabilities because we so marginalize them, remember those with disabilities are able to experience joy just like the non disabled. She closed, "I'm here as an advocate for those who have disabilities and who need this facility to be able to enjoy the same recreational opportunities as the non disabled, with the non disabled. I would like to invite you to take a step towards achieving that".

Mary Ann Russell (3314 Polaris Dr) Spoke in support of this item.

Russell states that she visited the Miracle League in Ankeny today with her program. She feels this park would help people with disabilities and the people who don't. She would like the park to be at Inis Grove Park because it is more accessible for people who are in wheelchairs. People with disabilities should not be hidden. We are part of the Community too. She states that the schools are

not a good idea because PE will be using it during the school year and we don't know what hours people can use the park if it is at a school. She is fighting for people who have disabilities and she is a person with disabilities and she is a part of this community.

Moran asked Abraham about other facilities that are on school property. Keith explained the agreements regarding Municipal Pool agreement where the Parks and Recreation department gets 2.5 hours of lap swim during the day and use of the pool again at 5:30 PM. With regard to the tennis courts, the school can use them during the day; however 2 courts are to remain open for public use.

Lauren Wernau (205 Dotson Dr) Spoke in support of this item..

Wernau is in favor of placing the facility at Inis Grove Park. Families can use the park and explore the rest Ames has to offer. Just like people in Ames travel to Ankeny, others will come here and use the park. She explained that it is easy to navigate to this park and is easily accessible to people who don't know Ames. She feels we should want to invite others to our community and share our community with them. She feels the central location celebrates our community with disabilities by not hiding them. She feels the Middle School puts them off to the side and isolates them into their own park. She also states that as an educator she knows that middle school aged students are not very nice. While they are out at PE and there are children playing on that park, there will be words said to those children and something as simple as one word can change their whole day. At Inis Grove it will only use 25 percent of the green space leaving 75 percent which is plenty of room. As for those who are concerned about noise pollution she states that she lives next to Hilton and she understands what noise pollution sounds like. The Miracle league is not going to be a bunch of drunken, raging baseball fans.

It is a loving and caring environment and the noise that is created will humble you.

Lisa Heddens (2401 Westwind Dr) Spoke in support of this item.

She informed the Commission the death rate of persons with disabilities is heightened when they feel loneliness and the lack of friendship. These people need to feel included in a community. She spoke regarding the evolution of the disability movement. Where once people with disabilities were housed out of mind and went to special schools; now they go to school in their neighborhood and all they want to do is participate in their neighborhood playground. She understands the park neighbors have an issue with the location. She reminded us that the persons with disabilities are not asking for anything more, just a level playing field. She has a son with intellectual and physical disabilities. She informed the Commission that having a playground that has the infrastructure and the flat space is an important issue.

Mary Jane Brotherson (1206 Michigan Ave) Spoke in support of this item.

Brotherson explained she is a retired professor whose research, teaching and advocacy have been in this field for over 40 years. Her point is that yes, this is a premiere park in Ames and yes, it has beautiful green space and trees and it's centrally located and accessible. She feels that this is what the community of

individuals with disabilities and their families and friends deserve because they have been marginalized and invisible for so much of our history. She feels it is forward thinking and has so much vision to say that we are going to give this the best location we have we are going to give this and make this an opportunity for this population in Ames. What she would like to speak about safety. She admits that there are a lot of safety concerns with this population. Just like any, these children do face a lot of safety concerns. In her opinion, this does not preclude Inis Grove Park. There would be safety concerns in any other park. She wanted to conclude with the fact that she has two young adults with disabilities. It is her hope that they and their friends can use this park that they feel so valued and included because you have given them a space in the premiere park and can be out there enjoying it with all the other people in Ames.

Amber Corrieri (2012 E 13th St) Representing Main Stream Living spoke in support of this item.

Corrieri informed the Commission that she was a member of the Exploratory Committee that began conducting research on sites and then became a member of the Steering Committee. She asked to address some issues that have been brought up regarding traffic and CyRide access. The City will be reaching out to the bicycling community and the neighborhood regarding bike lanes, pedestrian crossings and other traffic calming measures as part of the transportation plan. She also wanted to speak to land acquisition. She stated the Exploratory Committee did look at land acquisition for this project; however land is very difficult to find in Ames. The biggest reason Inis Grove rose to the top was because it is visible with a central location which supports what it means to be inclusive. She also wanted to comment on the Des Moines Miracle League Park. In her opinion it is not a good place for a Miracle Field. It is in an industrial area and not near public services and other amenities. She states it is locked with no allowable use when it is not being used by the Miracle League. In her opinion, that is a poor example of what it means to create an inclusive facility. She states that it has been difficult to read some of the comments in the media and social media this week as well as some of the things being said at this meeting. She feels what we will gain will far outweigh the loss of some green space or the noise when you open your windows on a Saturday morning and hear the sounds of a child that has previously sat on the sidelines have the opportunity to proudly sport their jersey and play baseball just like their brothers and sisters and class mates. She would like to say to the neighborhood that she knows change is difficult but this is the opportunity to embrace something that is so special.

Shelly Jaspering (823 Duff)

She has previously spoken to the Commission regarding this location. She agrees being close to the hospital is a big benefit for this location. Jaspering asked about the size of the new playground. Abraham informed her that the new playground is maybe a third of an acre.

Ebbers informed the Commission that he had with him a petition in opposition to this project. Abraham informed him that his petition should be delivered to City Clerk.

Bierbaum stated that he loves this park and yes, he does feel that this would change the character of the park but he does not think it is a bad thing. He agrees with Abraham that this could be a destination playground for kids in Ames. It is unfortunate that we have looked at all these options and there was only one option, but it is not a bad option.

Rowan keeps coming back to inclusivity. Children should all be able to play together no matter what their abilities. She understands the concerns and she feels it is really hard make this decision.

Johnston thanked Jaspering for her comments at a previous meeting. Johnston said she had a light bulb moment at Jaspering's comment regarding wanting to be in the same place. Johnston said in her head she was thinking Lloyd Kurtz would be a perfect place as it would all fit and it would be all by itself. Jaspering's comments changed the way she thinks about the whole project.

Litwiller thanked everyone for their comments. As she was listening these are the things that came up for her. This is a progressive community and we want to continue to move forward and provide programs and provide facilities that meet the needs of people of all ages and all mobility's and all walks of life. This is an opportunity to bring families together and it's a humbling aspect as well. It is a tough decision and we should not procrastinate any more.

Moran thanked everyone who has been working on this and all the residents on whatever side you are on. He agrees it is a hard decision. Moran wants the neighborhood to know that he had reservations on Inis Grove when he first heard it. He has looked at all the options and saying that Inis Grove was the only thing looked at is a completely false statement in his opinion. We have looked at many different places. He does not think it destroys all the green space but it will be modified and changed. Moran fees that the major resistance he sees is that there is uncertainty in the concept. We can blend this into the current aesthetics in the park. He feels that the Commission has done the right thing in slowing this process down.

Feilmeyer agrees with everyone else. She states that there are two incredibly important competing interests, an underserved population and the neighborhood. Feilmeyer does have incredible concerns as land is at a premium in Ames. She feels the City must protect what we have and any elimination of green space is a really, really big deal. She states she would not support a lighted ball field being put in Inis Grove but she could support this ball field in Inis Grove. She does not support lighting this field and has concerns about the storm water management. She feels like she can be supportive of this because of the type of park it is and the population that we are proposing to serve. There's something about the process where we have parts of the community who are really mad about this and questioning the motivations of either group. She fully respects the neighbors concerns and glad they want to protect the community's park and want to protect the green space. But she is also glad there is a group out there that wants to

make sure that our citizens who are not able bodied have recreational opportunities.

Feilmeyer does not feel that there was the due diligence that there needed to be regarding land acquisition.

Bierbaum asked Abraham if the design could come back to the Commission to make sure the neighborhoods concerns are addressed before it would go to the Council for final approval. Abraham said the neighborhood will be invited to participate during the design process through open houses and meetings. Abraham stated that Staff could bring the final design once this process has been completed back to the Commission before it goes to the Council for approval.

Moved by Bierbaum, second by Rowan to approve Option 1 with the addition that Staff would bring those designs back to the Parks and Recreation Commission for discussion and feedback.

No Discussion. No Opposition. **Motion Passes.**

ATTACHMENT B

All Inclusive Playground and Miracle Field Feedback

April 18, 2016

(Numbered items are questions/issues raised by attendees)

(Lettered bullets are responses by staff)

1. School sites were not included in the options, why?
 - a. The School District was involved in early meetings and then indicated they had nothing to contribute.
 - b. Ankeny's all inclusive playground and Miracle League Field is located on school district property. There have been issues regarding the school not allowing resident's access during the school.

2. I think you would run into security issues with allowing anyone on the site during school hours.

3. What about the use of former school sites like Edwards and the Crawford School
 - a. The Crawford site is too small to accommodate this project.
 - b. The School District is considering what to do with the Edwards site. Options include selling it to Heartland Senior Services, selling it to a developer, and deeding a portion of it to the City for a neighborhood park. This site may be an option but the school district may want to sell as is so there may be demolition costs.

4. Is the 1.5 million for the playground or is it for the parking lot and shelter as well?
 - a. It is an estimate for the playground, Miracle League Field, and potentially a restroom. Parking is not included in that estimate.

5. Have you gotten estimates for the restrooms and parking lots?
 - a. No. As a reference, we have \$250,000 in the Capital Improvements Plan for a new restroom at Inis Grove and \$200,000 for adding approximately a 75 stall parking lot at North River Valley.

6. What is the benefit of one or the other regarding the all inclusive playground and miracle playground? The field is a spike activity, while the playground could be used all of the time. A concern is the field is used only on Saturdays and not on the other days.
 - a. That is correct. The Miracle Field will have many people coming to the park in a short period of time for games where the playground will see a much lower number of people coming at one time.

- b. It has been discussed within the Committee to offer other programs throughout the week.
- 7. Take the money from the parking lot, make it smaller and make the playground bigger.
- 8. Is this a dual project? Is the money already in the budget or does the money still need to be raised?
 - a. There is no money in the City budget right now for this project. There has been indication from the Parks and Recreation Commission and the City Council to support this project with some funding but no decision has been made.
 - b. The Committee is hoping to fundraise most, if not all, of the funds needed.
- 9. Parking on 24th St, has there been any discussion on how to fix it?
 - a. Changing parking to one side only is an option.
- 10. I don't think people understand how dangerous it would be to add further congestion to 24th St.
- 11. When you talk of an All Inclusive Playground, does that include the ballpark as well?
 - a. The all inclusive playground and the Miracle League Field are two separate amenities.
- 12. Encroachment of the greenspace, you are going to have a lot of ball fields and less greenspace.
- 13. The special surface, does that cover the whole park or is it under only the equipment?
 - a. It is under and around the equipment on the playground and on the ball field. The rest of the area remains green space except for any paths.
- 14. Can able bodied individuals use the facilities or do you have to have separate facilities?
 - a. All inclusive means everyone can play on it.
 - b. One e-mail received asked if there would be exercise equipment included for seniors.
- 15. Will you be holding other public hearings regarding other possible locations for the park?
 - a. That is a real possibility depending on the final location.
- 16. Would the City consider widening the street?
 - a. That is a question to be discussed with the City's Traffic Engineer.

17. I like Lloyd Kurtz Park because he was a Kiwanian. If you put the playground, field, restroom, and parking there, and say it will cost \$2.5 million, what is the percentage breakdown of funding?
 - a. If you wanted to do all of that in one location, Lloyd Kurtz is not big enough.
18. It is apparent that the ball field will draw from a greater area. Is there another avenue to raise funds to complete the project?
 - a. The Committee has had discussions about this but nothing has been decided.
19. Look for other opportunities outside of the City, possibly in a County park.
20. Explore gifting opportunities of land for this purpose.
21. Will the maps of the parks be online?
 - a. We will put the Power Point on line.
22. It would be important for the park to be on a CyRide route?
23. Long term, has the commission discussed adding an additional Community Park in the Southern or Southwest part of Ames.
 - a. In the Park Master Plan, additional community parks are recommended to the southeast, southwest, west, and northwest areas of the community.
24. The miracle league field is the issue, not necessarily the playground.
 - a. If the field was in a separate location, do the Inis Grove neighbors have issue with locating the playground in the park? General response was no.
25. How many acres would be needed to develop the shelter, field and playground?
 - a. Approximately 1 ½ - 2 acres.
26. Have you talked to Story County Conservation?
 - a. No.
27. July 1, 2018, do you have a timeline regarding determining a location?
 - a. Not yet. A member of the Committee is developing a time line for the fundraising campaign and that will help determine when the location needs to be finalized.
28. Inis Grove neighbors feel that Emma McCarthy Lee neighbors put up a bigger fight and that is why commission heard them about not putting the sand volleyball courts in the park.

29. Input needs to be listened to objectively and make sure decisions aren't made due to a squeaky wheel.
30. Some people feel that the decision has already been made, so why bother trying to discuss the issue with City staff.
 - a. The decision has not been made and that is why we are getting feedback. The Parks and Recreation Commission is interested in what neighbors have to say prior to making a decision.
 - b. The feedback from this session will be shared with the Commission.
31. It is too early to know the impact from Sand Volleyball, so it is premature to place the All Inclusive playground and Miracle League Field at Inis Grove.
32. What would be the plan for concessions?
 - a. This has not been decided yet. However, discussion has been had regarding just providing space to set up tables for selling concession or contracting with vendors to sell concessions.
33. Have there been any traffic studies done that shows the future impact the project would bring?
 - a. Not that staff is aware of but the City's Traffic Engineer will be asked.

ATTACHMENT C

ISSUES/CONCERNS AND WAYS TO ADDRESS (Developed by Advisory Group) Summer 2016

ISSUE/CONCERN	WAYS TO ADDRESS
Loss of prime greenspace	Purchase land and locate the field and playground there Removal of tennis courts Put field in back of location Separate the components Put the playground on the footprint of a current playground Land donation Put field in Homewood area
Loss of space for non-programmed activities	It may provide for different non-programmed activities
Negatively impact park aesthetics	Screening plantings Creative design Match amenities with current landscape Highlight underutilized areas of park (stairs, etc.)
Addition of lights	Don't include lights Program when natural light is available Orientation of field Put field in back location Adhere to night sky ordinance
Noise (sound system)	Not have a sound system Direct speakers away from houses Plantings to help screen sound Limit what the sound system is used for Adhere to the City's noise ordinance
Addition of scoreboard	Not install scoreboard Utilize a portable scoreboard Telescoping scoreboard Manual type of scoring Incorporate into fence line
Traffic on Duff Avenue (fast travel)	Install traffic light at 24 th & Duff Enhance enforcement Bigger issue than the field
Traffic on 24 th Street (narrow street, dead end)	Widen street Stagger programming Bigger issue than the field
Parking concerns on 24 th St. and Broadmoor	Parking on park side only on 24 th Parking on East side of Broadmoor Ave. Add parking in park portion
Impact of sand volleyball courts	Move other programs out of Inis Grove Unknown at this time
Parking availability for other activities (sand vb, tennis, etc.)	Stagger programming Determine number of spots needed How to accommodate busses?

Adding programming	Stagger programming
Safety of streets and ravine	Screen ravine (fence, plants)
Lack of involvement from neighborhood. Did City do all they could to notify neighborhood?	Continue to have discussions with the neighborhood and community as a whole.
Fundamentally alter the use of the park	

ATTACHMENT D

ALL INCLUSIVE PLAYGROUND AND MIRACLE LEAGUE FIELD E-mail Correspondence

I am unable to attend the meeting on April 18th, but would like to inquire whether equipment would be added that would be appropriate for seniors. Below are several references to allow you to understand what might be included for seniors. I am sure all-inclusive means all ages and this would be a wonderful addition to our community. Please advise. Thank you.

<http://www.governing.com/generations/government-management/gov-senior-playgrounds-popping-up.html>

<http://seniorplanet.org/playgrounds-for-seniors/>

Linda Dutton

Thank you for your prompt response. I think this will be a great addition to our community and seniors and young people can interact in a positive environment. Looking forward to hearing where this goes!!!

Linda Dutton

Hello Keith,

We live at 2810 Duff Ave. and received a notice about future planning of a playground for Inis Grove Park. We have seen and have pictures of the All Inclusive Playground and Miracle League Field. Yes, it is a nice complex but it is also very commercial looking with bright colors and rubber and plastic. Inis Grove is a more natural park setting with very old trees, hiking trails and very steep inclines and a gully on the north end. Not the safest for a large crowd of young children wandering around.

Here are our points on why Inis Grove is a BAD location:

1. Traffic is very busy and you would have to put a stoplight at 24th and Duff.
2. Parking. You would have to build parking lots. Parking on Duff is dangerous as it is very busy and cars speed thru that area all the time. There is very little police oversight for traffic etc in this area.
3. It would hurt the property values of the homes that overlooked the area with such a "commercial feel" to complex you have in mind.
4. The area is used extensively for soccer.
5. Inis Grove has many gullies and sharp inclines that are not marked and kids wandering around from your complex could be injured. There is access to a very strong current of the river that is adjacent to Inis Grove.

6. We already have Camp Canwita and a Preschool that uses the area for 12 mos out of the year with all their traffic of parents dropping off their kids.
7. There is no sidewalk on any street around Inis Grove Park.
8. This is a highly populated area of homes and there would be no buffer for the noise that would come with this type of complex.
9. It will bring more foot traffic and car traffic to the area that is a residential area.
10. The trash would increase from this type of complex and would end up on surrounding private property and in the wooded areas and gullies surrounding Inis Grove Park.
11. Lights of this complex would be very annoying for all the residential area surrounding the park.

Whoever this group is that is pushing for this Complex at Inis Grove obviously do not live in this area of town and do not understand how this is not suited for this location. They just see a big flat field and have not thought about the neighborhood, the history of Inis Grove Park and how damaging and ill conceived their plan would be for such a beautiful park.

This Complex they want to build is better suited next to the Swim Park, Hunziker/Ames Sports Complex, or River Valley Park that has the ability to handle the traffic, noise, and sidewalks and intersections that can handle the thousands of people who will use this complex.

Please reconsider this and find a more suitable location. Also, the 1.5 million price tag is quite high. There will be fundraising etc., but we have a strong memory of how that went when they tried to start the Hunziker Sports Complex and what a financial nightmare that turned out to be until the City of Ames became partners. If this comes up for a vote for the City of Ames Property Tax increase to help pay for it, we will be voting NO.

Thank you for your time,

Kurt and Melba Olson Family

2810 Duff Ave

Hello!

My husband and I cannot attend the discussion scheduled this evening at City Hall, but we would like to at least send you a comment for consideration.

If the proposal to build the All Inclusive Playground and Miracle League Field is approved and Inis Grove Park is considered as the site, we want to point out that since accessibility is critical, the best area for building would need to be as close as possible to the parking lots on Duff or the 24th. Street tennis courts. Accessibility would also have to be where the ground is as level as possible, again close to Duff and 24th . Street. The area which is closer to the older bathroom facilities, playground, and shelter further north does not look promising as it is hilly and further removed from the parking lots.

Wishing you the best and appreciating your guidance,

Zora and Tom Zimmerman

Hi Mr. Abraham! I will not be able to attend tonight's meeting regarding the all-inclusive park that is being considered for Ames. I would like to vote in favor of making one of our parks accessible for kids with special needs. As an employee of Heartland Area Education Agency, I know that there are many families in Story County who would benefit from such a park. Thank you for considering this for Ames.

Jamie Gurganus

Keith,

I was unable to attend the forum last evening to learn about the newest proposed projects for Inis Grove Park, but want to express my thoughts. I want to applaud you and Kiwanians for your efforts to provide these kinds of services. I know they are badly needed. I do have some concerns about your proposed location of Inis Grove Park.

It is my understanding that the proposed park is to serve a regional need, not just the City of Ames. It is also my understanding that this project is well on it's way. Why have we not heard about it before now? Why have we not been asked for input before it is so far advanced in thinking and the fervor is so high amongst your staff and the Kiwanians? It appears to me that the project is moving far too fast and perhaps it has already been decided. As I expressed to you before, when the sand volley ball courts were the issue, that if it has been decided, don't placate us by asking for our input.

I would like to encourage you to reconsider the neighborhood and the area that you are considering. This park is a neighborhood park. There is a lot of foot traffic among all ages in addition to the playgrounds that are enjoyed by many families and children. It is one of the most beautiful parks in the city of Ames and enjoyed by many for that reason. As we were concerned about before, we are greatly concerned about the traffic and the parking conditions. We have been open to soccer fields and tennis courts and now have reluctantly accepted the sand volley ball courts. We were told that the sand volley ball courts were necessary so that volley ball players from other communities would enjoy playing here. Wouldn't the Miracle League Field and it components be a little much for the space? Once again, that is a regional issue, not a city issue. I would like for you to consider how many of the park facilities that we have are devoted to sports activities. It seem that a great deal are and we as a community of all ages and interests have needs other than sports.

Again, I would ask why can't other areas be considered? I know that you are trying to avoid the flood plane areas, but the fact that the swimming pool was built in such an area sort of blows a hole in that argument. The residents around Emma McCarthy Lee Park were very vocal and hung in there until you changed your mind. Why aren't you willing to listen to our concerns also? There seems to be a lot of available land and parking to the north side of Ada Hayden Park. Why is that not being considered? Again, I do believe there are others areas to consider. The fact that the restrooms have been updated should not be a deciding factor. I would be reminded of how long we waited for them to be taken care of.

I would also like ask if you have a long range plan for the park system in Ames and are you following that plan? If not, I would like you to consider doing so. Our city parks should be aesthetically pleasing as well as sports accommodating and projects such as this should fit into the plan.

Thank you for caring about all concerned and I ask that you seriously consider the comments you receive from the residents in the area.

Sharon Drake

2115 Douglas

Dear Keith,

Thank you for holding the forum this evening regarding the above named projects. We have reflected on the meeting and would like to offer some continuing dialogue. From the conversations amongst those attending, this project has a head of steam. It is obvious that the agencies and the Kiwanis clubs have a zeal for implementing this project. It appears from their comments that in fact Inis Grove is the best and only location. From your analysis it appears that you and your staff have come to the same conclusion given your chart. Being a former Kiwanian for twenty-five years and a past president, I know that special needs population is a particular emphasis for their service projects.

In thinking about this more broadly, it is apparent that there is a significant regional need as well as an Ames need. This discussion needs to be broadened with the constituent groups in the region. We realize Ames is a magnet just like Ankeny for these projects to serve the people with special needs. However, it may not be in the best interest of the total Ames citizenry to address the issue within the city park system. This project may be moving far too quickly to analyze the total city and regional needs.

As you indicated, those of us in the Inis Grove area have been rocked with proposals since the location of the sand valley ball courts. Regardless of the decision, the tenacity of the Emma McCarthy Lee Park neighborhood and the issues of parking and traffic flow in the 24th Street area have caused residents in our neighborhood to really feel that the decision has already been made and it doesn't make any difference. Please do not use the previously approved bathroom renovations in both locations in Inis Grove as a reason to proceed.

More importantly is the consideration of the long range view of the park system and its aesthetic to the residents of Ames. While it can be programmed three to six days per week, it is difficult to explain the number of people who view the park as one of Ames most beautiful spaces to enjoy nature and its beauty as well as activities in the park. We obviously see this on a daily basis as we see individuals and groups spend their time using the green area as well as the shelter and play equipment.

While this is a good project, we believe that the Miracle League Field and its component parts overwhelm the space. It is not longer a park but a ball field.

Notwithstanding, we have a concern about the value of the property in this area if this project takes away the major part of the park and the attractiveness of the area.

We have lived in this community for fifty years and as you know, we have been actively involved in the city and the ISU community. It is with this in mind that we have raised these issues for further consideration. We'd be most happy to visit with you further about these proposed projects as you move forward. We can be reached at this email or our home phone, 232-0073.

Larry and Barb Ebbers

Hi Keth,

Thanks for your informative presentation at the public input meeting concerning the possible location of the proposed Miracle Park at Inis Grove. I didn't find the presentation on the city web site and was hoping you could email me a copy. I'm particularly interested in the location criteria slide.

The Miracle Park sounds like a wonderful addition for Ames. However, I'd again encourage further review be given to the traffic and parking implications as well as scheduling and usage amounts at the Inis Grove location. As the parking/traffic problems that already affect residents in the 24th St and Broadmoor area have not been addressed and the traffic implications of the new volleyball courts remain to be seen, it seems premature to add another use to Inis Grove. The Miracle Park has potential to be a sizable attraction, and I hope that the search for a location will be broadened. I'd hate to see the desire to start fundraising drive a hasty location decision.

Again, thanks for the informative presentation and best wishes on a successful project.

Betty Baird

Great, thanks.

I apologize for being on a quick learning curve! I did have a couple questions:

- 1) I see that Lloyd Kurtz Park was originally proposed (January) as possibly the best option (out of the flood plain, underutilized, enough space, visible, adequate parking, easy to get to). I was wondering what caused that park to be eliminated from consideration and the focus moved to Inis Grove?
- 2) You mentioned the school district did not wish to participate in terms of having the Miracle Park located on school property. Has any other city owned property been considered?

Again, thanks so much for your quick response to last night's email.

Betty

Keith:

I appreciated the discussion you led with the Ames Park and Recreation Commission last Thursday concerning the location of the Miracle Park and Field. There were some very interesting ideas location options mentioned.

You may be aware but, in case not, I did want to mention that there is an initiative in the capital improvement plan regarding bike lanes on Duff Avenue that will impact parking on Duff Avenue.

Thanks,

Betty

Hi Keith

One of the options that you talked about that has not been discussed anywhere is taking the Miracle Field to Brookside. You were going to check with Davenport because they placed theirs in a flood plain area. I hope you will continue to explore that option as well.

The more I think about this the more I am concerned about congestion in the 24th Street area and the long term use of Inis Grove --this move will make it look more like River Valley . Areas that have large numbers of activity points generally are in low density population areas--certainly not the case here.

Larry and Barb Ebbers

Keith,

Thanks for providing information regarding the public meeting the All Inclusive Playground and Miracle League Field. Since attending the April 18 meeting, my wife and I have visited some of the locations mentioned, and I have a couple of thoughts.

On a nice 70 degree Saturday afternoon a couple of weeks ago, we observed lots of activity (especially soccer) all over the green spaces of Inis Grove park. We then stopped by Lloyd Kurtz, and there was not a single person there. I don't know if that level of inactivity is the norm for Lloyd Kurtz park; but if it is, it would seem that it would be a good location for additional activities. I realize that the only available parking is owned by the church to the east, and I can understand that they might not agreeable to the anytime, drop-in traffic that the playground would generate. However, the scheduled, limited usage that the ball field would generate would not seem to be in conflict with the normal usage that a church would have. The church might be happy to participate in a community-minded activity like the ball field; in which case it would seem that some sort of long-term lease/easement for parking could be agreed upon.

We also visited the All Inclusive Playground/Miracle League Field location in Ankeny. As we walked around the facility, we noticed that the bases of the two were totally different. The area around the playground was obviously made 'cushy' by some sort of sponge like material as you described at the meeting; and we understand that debris from a flood could be damaging to that material. However, the ball field was not particularly soft, and seemed to be just rubber over a firm base. If a different construction technique used for the ball field would not require it to be out of the flood plain, it would certainly open up some location options (especially North River Valley).

We live on Duff across from the north end of Inis Grove, so we would not be directly affected by the increased traffic and activity that putting both of these facilities at one spot would generate. It would seem adding something as major as the combined playground/ball field in a location that is already receiving the new lighted volleyball courts (and hasn't had a chance to see how the courts will affect park usage) is too much. We would probably agree with the commission member who seemed to feel that a better plan might to be to separate the playground and ball field.

Thanks for your time and consideration

Ken Cameron
2707 Duff Avenue

Dear Mr. Bierbaum:

I am writing with respect to the vote this Thursday on the future home of a Miracle Field and All-Inclusive Playground at Inis Grove Park.

I live across the street from the park and wish the Commission would permit more time before making a decision about where construction will occur and truly seek out the views of impacted households before going forward.

I was out of town during the 4/18 community meeting but a friend who attended reported that she understood the decision to place the "amenities" at Inis Grove had been decided by staff before the meeting and the hastily called meeting (the announcement of the meeting arrived only a few days before the meeting) was not really to garner information to assist with decision-making.

More attention should be given to placing the two facilities at separate locations. I've seen the proposed baseball field described as a "destination" park with "visibility" that will draw from a large part of Iowa. I expect that it will be successful and I fear that its footprint will grow with the addition of spectator stands, loudspeaker systems, and needs for additional parking. It will then dominate the park and really change a nice open greenspace with limited amenities into a developed, busy place with traffic issues and few opportunities for unscheduled use. I don't foresee any problems with building the playground at Inis Grove.

I'm also dismayed that there seems (to me) to be little guidance to this project from a long-range plan for parks in Ames. I don't have a firm understanding of future land use plans in Ames but it seems to me that new parks are needed in South and West Ames, areas of planned (and real) rapid growth. Continuing the development of parks in the Northeast part of the city strikes me as shortsighted.

Thank you for your attention,
Martin Edelson
2417 Duff

Keith:

Thank you for letting me know that the potential location(s) of the new playground and field will be on the May 19th agenda. Do you expect the Commission to finalize the location(s) at that meeting?

I apologize for being unfamiliar with the way that things get done in the city. Do Commissions determine actions, such as changes to city facilities, or do they make recommendations to the City Council which has the authority to make changes?

Also, is there a long-range plan for parks in Ames? If so, is it accessible on the web?

Thank you,
Martin

Keith:

Thanks for answering my questions and for the reference to the parks master plan. I know that staff spoke to Ankeny Park & Rec staff during planning but did anyone from Ames speak to residents who live close to Hawkeye Park about their reactions to the Miracle Park?

I wrote to a friend in Ankeny about the field and he mentioned that Hawkeye Park has many summer events (including concerts, fishing) and lots of parking. He doubted that the Miracle Field brings much additional traffic to an already very popular venue.

You mentioned that like "peanut butter and jelly" it makes sense to combine the playing field and the playground at one location. One description of the Ankeny facility I found mentions the benefits of placing the Miracle Field close to ordinary baseball diamonds so that the two populations can interact.

Regards,
Martin

Keith,

Thank you for your leadership in developing programs and activities to meet community needs. You said it well in your *'Director's Spotlight'*, in the Parks and Recreation Guide, 2016.

As I was unable to attend your meeting regarding construction of all-inclusive play ground, I thank you for the invitation to contact you as noted in the newspaper.

Further information and clarification would be helpful.

1. Are the Playground and Miracle League Field two separate entities?
2. When was this idea(s) first introduced?
3. Introduced by whom)?
4. Would it or they be located closely together or at separate venues?
5. What is the project history?
6. Who is on The Committee)?
7. How were they chosen?
8. What are funding options?
9. What community and neighborhood parks are being considered for location?
10. What are the requirements for location?

11. Any other items that I may have neglected to ask that are important ?

12. What other items did I miss from your meeting?

13. What is meant by "League" as in League field?

You are busy; I am busy! It may be the best use of our time if I stopped at your office for a short time to be briefed on the above.

I am available Tuesday, Thursday, and Friday mornings (10th, 12th, & 13th).

Thank you for your consideration.

Donna

Ames Parks and Recreation Commission Members:

As a follow up to my April 20th email, I wanted to reconnect with each of you prior to tonight's Parks and Recreation Commission meeting regarding the location of the Miracle League Field and All-Inclusive Playground.

As a member of the Miracle Field and All Inclusive Playground Steering Committee, I wanted to reaffirm the reasons I feel Inis Grove Park is the ideal location for the Miracle Field and All Inclusive Playground. The main points I think you need to consider are:

1. It has available land for the optimal field and park layout, including parking that allows individuals with limited mobility to park or be dropped off very close to the facilities;
2. Has new bathrooms planned/budgeted for in the Capital Improvements Plan, which will decrease project costs significantly, as they can be bid together and built to be ADA compliant;
3. Has existing parking that meets stormwater demands and requirements, and though additional parking may be needed, having the existing parking and stormwater in place is also a significant cost savings;
4. It is outside the floodplain;
5. It is centrally located and easy for individuals who are not familiar with Ames to find as they venture to Ames to enjoy the park or for sporting events at the field;
6. It is one of the City's most popular parks, and adding these facilities will only increase the park's value and popularity;
7. Since it is a large park, with the addition of these facilities, there will still be ample green space for visitors to enjoy.

There will always be concerns with any project, and having attended the public meeting Monday, April 18th, I understand the main concern to be sufficient parking and ensuring overflow does not overtake the

adjacent neighborhood or 24th Street. Those issues can easily be mitigated by additional parking laws and enforcement to ensure the highest level of safety for park users and residents alike.

Therefore, I ask that you consider these items and can agree that Inis Grove Park is the best location for this great project and will voice your support at tonight's Parks and Recreation Commission Meeting.

As a Steering Committee, we need to have a location and site plans before we can really start fundraising for this great project, and I ask that you assist us in this venture by providing some much needed certainty by recommending Inis Grove as the location for the Miracle League Field and All-Inclusive Playground.

Please let me know if you have any questions or if I can be of assistance in any way. Thank you for your consideration. Have a nice rest of the day.

All the Best,

Drew Kamp

Director of Story County Community Outreach

Director of Government Relations

My name is Brian Ouverson - HC at the Johanns house for Friendship Ark Homes

I am very sorry we will not have any staff or core members able to attend this meeting we are truly excited about this having something like that in our own city currently we travel to Ankeny or Urbandale (Courage League) so having something here in our own city is very exciting and a great need for our core members and community

thanks much
and god bless

Parks and Recreation Commission members,

We are writing to you as a follow up to tonight's meeting about the all inclusive playground and Miracle League field. Many of us that were present tonight were also present at the meeting regarding the sand volleyball courts, as well as last months neighborhood meeting.

I believe we comported ourselves in a professional and cordial manner when we addressed the commission. We thank you for your patience as we spoke about our perspectives regarding the project. We realize that much work has gone into this subject.

At the end of the discussion, one commissioner stated that " the neighborhood didn't support the project and that saddened her". To say this was a direct insult to those of us present is an understatement. At no point during the evening did we say that we didn't support the project (or for that fact, special needs

residents). If you read the Commission minutes of your April meeting (that you approved this evening) you will notice under the Directors report,

1. ***Abraham hosted a public input meeting on Monday evening. Notice of the meeting was included in an email sent to the current Parks and Recreation database and letters were sent to 130 park neighbors. Abraham gave history of the project and spoke to attendees regarding location options and what criteria will go into choosing a location. Abraham reported to the Commission that no one was opposed to the***

project but some opposed the Inis Grove location, especially the Miracle League Field.

I believe that Keith could corroborate that at no time was that the tone of our neighborhood meeting in April. This was reiterated in Larry Ebber's powerpoint.

Our whole perspective is to keep Inis Grove as the park that it is. The concerns of traffic, safety, crowding and lighting were brought up during the meeting about sand volleyball, so this has nothing to do with who uses the facility.

After we left the chambers, all our neighbors felt personally insulted at this characterization.

Sincerely,

Warren and Libby Franke

Hello Keith

I attended the parks commission meeting yesterday. I am fully in support of placing the accessible playground and Miracle Field at Innis Grove Park. I understand the concerns of the local residents who spoke yesterday. My experience with the park goes back twenty years when my kids played soccer there. Moving the soccer will alleviate most of the parking problems. This is a large community park. The needs of the larger community need to be considered along with the desires of a few highly vocal neighbors.

Sincerely, Thomas Russell

Dear Keith,

Barb and I visited the Miracle Playground and Ball Field in Ankeny yesterday and I want to raise my concern (along with my neighbors who have been to Ankeny) about the appropriateness of the Miracle League Ball Field being located in Inis Grove Park.

First it is a "ballpark" and not a park or recreation area. It is a part of a complex that is in a low density housing area and part of a larger complex near an elementary school area. The fall field, the bleachers, concession stand and lighting are certainly not consistent with a community park. It is an area that is dedicated to more of defined space for ballparks and recreation. As you know I, in the spirit of Lloyd Kurtz, am very concerned about turning park space into recreation space for ballparks. I am appealing to the Parks and Recreation Commission to consider what it will do to one of Ames' most beautiful open and green spaces parks in Ames. Regardless of location in Inis Grove it will destroy the open nature of Inis

Grove usage for the many Ames residents who use it. I realize you don't have documentation of the number who use the park but we do see it on a regular basis. I do think a stewardship of Ames parks would be well received.

I urge you to consider looking at additional alternatives - not always easy when a member of the city council went to WOI TV 5 to state her case before the news about using Inis Grove without any consideration by the Parks and Recreation Commissioners or the neighborhood. We have no objection to the playground. In fact, yesterday there were many kids playing on both playgrounds in Ankeny which is similar to what could occur at Inis Grove with the current playground remaining in place.

I have looked at several alternatives for the ball park and I do believe they can be separated. While it is easy to say they should be together, they serve very different populations. In fact, the case could be made for families with special needs child/children could play along side their siblings. My first choice is O'Neil Park (rarely used). It is accessible on the Cy Ride route and there is parking on one side of the street as well as a DOT lot open to the south of the ball park for evening and weekend parking. The second alternative is to explore more aggressively a ballpark at the Ames Middle School or the new ballpark at the District office on 24th.

Another possibility is Lloyd Kurtz. I know you have concerns about the church with the parking but have you talked to their leaders? In addition, I hope you have contacted local land owners (Hunziker, Dickson Jenson) about possible location and donations of land.

Our neighbors ask you to be prudent and not rush to judgment. Not only are we concerned about retaining open spaces in the park but also the rush to judgment on the part of your staff and others in support of this project. As a former commissioner, I am concerned about what is best for Ames and the total population who use the park system as well as future generations.

I think the discussion that occurred at the commission meeting in May is an indication that this needs more time and study . . . and other options.

I am happy to visit with you in person at any time after Monday, June 6.

Larry Ebbers
515-290-9854

Dear Keith,

Tonight we held a meeting of the newly formed Inis Grove Neighborhood Association. We continued to discuss the Miracle League Park and Baseball Field. I did inform them that Martin Edelson and I agreed to be part of the committee that you are forming.

I have attached a copy of a response to the commission meeting by Clyde (Skip) Walter who lives on Broadmoor and who spoke at the commission meeting. We agreed that you, as well as the commissioners, should see his prepared statement.

Much of the discussion centered on alternative sites as we believe that Inis Grove is not the appropriate park for the ball field. We are, however, willing to accept the playground being next to the current playground.

One of the participants at the meeting had researched all of the city council minutes from January to date as well as all of the parks and recreation minutes. Lloyd Kurtz Park was the first one discussed at these meetings and we are asking you to revisit that site location for the ball field and playground. The church

is amenable to using their parking lot for the park but you stated if they have a change in leadership that it might change. The church has a very strong record of working with special needs children and their families. We doubt that will change. Pam Riney-Kehrberg who spoke about the safety concerns at Inis Grove at the commission meeting thinks Lloyd Kurtz Park is an excellent location.

In addition, we believe that further exploration of the Ames Middle School site is worth discussing with Tim Taylor, Ames Superintendent. Barb and I have looked at the site and think this is a possibility. I am willing to approach him about the possibility of partnering with the City of Ames.

Pam would also like to revisit the possibility of partnering with Child Serve. There is some adjacent land near Child Serve which is for sale. It would be an ideal location and allow Child Serve to access using the facilities.

I also want to keep O'Neil Park in the discussion. To solve the parking issue, we may want to discuss this with the DOT.

Skip Walter made some cogent comments about exploring other alternatives currently not known to the parks and rec commissioners.

All of these sites are on Cy-Ride routes.

Walter Grove who deeded eighty acres of land to the City of Ames to be used in part as a park. Lloyd Kurtz had the same vision to save green space for the Ames residents. All of us who live around the park see its use on a daily basis. This is the one park with open spaces, inherent beauty and all facets of natural nature. A ball field will change that. Residents at the meeting commented about how much the sand volley ball lots have already changed the nature of the upper park. . . .and they haven't finished completing it yet.

I wanted to keep you informed of our discussions.

Larry Ebbers

Inis Grove Park meeting

Skip Walter, June 9, 2016

Words used by Parks and Rec commissioners and Keith Abraham at the May 19 hearing:

Destination: as in “the Miracle League baseball field will become an Ames destination, attracting people from other locations to visit and improve the local economy.” However, it takes very few observations of Inis Grove Park to realize that it has long been a “destination,” with people from Ames and elsewhere gathering for receptions, birthday parties, picnics and soccer games. Many of the supplies required for these activities are purchased locally. To ignore the established broad appeal of Inis Grove Park and make unfounded claims that a new facility would be a more effective economic development “destination” is foolhardy.

Due Diligence (a): group proposing the baseball field was praised by a commissioner for doing its “due diligence,” which may be partially correct. Their plans did follow a model for similar facilities in Des Moines and Ankeny, which provide similar specialized recreation opportunities. But the physical siting for the Des Moines field was located in an existing sports complex and the Ankeny field is located on the grounds of a school. Neither required the destruction of an existing public facility, such as a popular

park. **To the sponsors' credit, their recommended site would have been at a newly developed park in North Ames**, rather than Inis Grove (which apparently was the recommendation of Parks and Rec.).

Due Diligence (b), continuing with the discussion of location alternatives: to a question of purchasing other land in or near Ames, we heard (from Director Abraham) that one farm owner with land for sale had quoted a price considered too high; the assessed valuation reported in the minutes was \$713,000). There was no further mention of other inquiries, such as engaging a real estate professional or making the land requirements known to potential private and corporate donors. Budgeting for this project also appears to be incomplete, with the figures of \$1.5 million and \$2 million being heard, apparently representing the amount to be paid to Surface America, the installing corporation, and with no amount being budgeted for the considerable land resources that would entail. "Due Diligence" generally describes an exhaustive information gathering effort, which does not seem to be the case here. With the help of the Parks and Recreation Commission and office, the sponsors have settled on Inis Grove Park as the one and only site to be considered. The "due diligence" label does not describe the background work of the sponsors.

Due Diligence (c), efforts of Park and Rec to support this outside proposal: The pattern of the May hearing gradually became clear, as "the Neighbors" voiced their concerns: parking, lights, noise, aesthetics, effects on current users. For each concern, Mr. Abraham had a proposed response: To alleviate parking on 24th St. and Broadmoor, restrict parking to one side of the street; some participants will arrive by Cy-Ride (it's possible, but likely?).

Lights can be aimed away from residences and be no worse than existing lighted basketball or tennis courts.

Noise would be mostly on Saturday mornings probably avoiding family times (a schedule which calls the question of how extensively would this highly specialized structure be utilized and whether the project is a good use of funds and space).

Aesthetics concerns were raised by several people who suggested the structure would not be attractive in a park setting. To this, Mr. Abraham said that it could be painted "earthy colors." I assumed he was looking for the phrase "earth tones" and I managed to keep my potentially earthy response to myself, but his comment was a good example of his position on "parks" vs. "recreation." He has adopted the role of cheerleader for this pet project of a well-intentioned service organization that has an incomplete plan and deficient budget.

Effects on current users: it was unfortunate that comments from other affected parties were absent on May 19. One particular group, the soccer players, was mentioned in the motion for further study passed by the commission. I wonder if Parks and Rec has sent them the proposal to kick them out of Inis Grove park, which they have used for years which requires only temporary goals and field markings, making their sport truly sustainable.

The pattern established by Mr. Abraham (concern and response) may be considered an example of due diligence. If the Commission recommends that City Council approve the project (and most of the commissioners' comments were supportive), then Parks and Rec can show evidence that it collected a list of concerns (from "the Neighbors") and addressed each and every one.

The role of the Neighbors has been mishandled by Parks and Rec. While it was proper to include us in the deliberations, we have assumed additional—but unacknowledged--roles by default. First, it was not a public hearing, in that it was not widely publicized (I could find no newspaper announcement; I was told of the hearing by a neighbor), whether by intention or oversight. So the Neighbors became the spokes-people for all Inis Grove Park users. Second, continuing to refer to the negative responding group as the Neighbors is a practice by Parks and Rec to trivialize our comments. Inis Grove is not a

neighborhood park but an Ames resource. This is confirmed by the Parks and Rec website which lists it as a community park; some others are identified as neighborhood parks. Our concerns are shared by the soccer players, the shelter users, hikers, naturalists, photographers, and visitors to Ames. The treatment by the commission as complaining Neighbors is undeserved. Third, and most important: the Neighbors have become, by default, the stewards of Inis Grove Park. While the Director and the Commissioners have chosen to focus on the Recreation side, the void of support for Inis Grove Park as a park seems to have fallen to the Neighbors. Our message needs to include the necessity for the Commission to recognize its role as stewards of a successful park, rather than supporters of outside organizations with insufficient resources for its chosen programs.

Equation:

$$A + B = C,$$

Where A is the space allocated to park grounds at Inis Grove; B is the space allocated to recreation facilities; C is a constant (i.e., the total).

If the Commission (and, in turn, the City Council) votes to increase B, they will also voting to diminish A (since C is a constant). That is, a large portion of the prime land at Inis Grove Park would be torn up to allow the baseball installation, which also would restrict the activities that could be conducted in the remaining adjacent spaces . The question thus becomes: is it responsible government to destroy a valued and successful park for the proposed or any other additional recreation facilities?

A few weeks ago I wrote to you about the proposal to install a Miracle League Field and All-Inclusive Playground at Inis Grove Park. To update you on this issue from the local perspective, a small group of people from the Inis Grove neighborhood recently met and decided to pursue the organization of a city-recognized Inis Grove Neighborhood Association. I received an official application today and would appreciate information from Keith about the people he contacted about the April 18th meeting. He said that he sent out about 130 invitations and I'd like to check his definition of the "neighborhood" against the one that we have compiled. Perhaps we can do that next week when the committee he is organizing to deal with the Miracle League Park meets for the first time.

I attended today's Commission meeting and wanted to share some of my observations with you. They arose in part from conversations related to the proposal to install a Miracle League Field at Inis Grove but do not directly pertain to that issue.

Observations:

With regard to the first agenda item ... support provided by Parks and Rec to Green Hills. The Commission voted to fund someone to assist with an aquatics program at Green Hills but did not discuss the necessary qualifications of such a support person. During the Inis Grove Park neighborhood meeting I asked a woman, who has an autistic child, "Do you think investing ~\$1.5M to construct the Miracle League Field and All-Inclusive Playground is the best way to use that money to support the handicapped community?" She said she didn't think it was and that she would invest the money in more extensive programming for the handicapped and to hire better trained personnel. She cited, as an example of poor current support, how swimming instruction was provided to handicapped children. ISU students, with no experience dealing with the handicapped, were employed and she believed the results were sub-optimal.

With regard to the aquatics support for Green Hills ... will the person selected for the position have experience working with geriatric clients? Should the Commission require such experience?

The second agenda item dealt with a program to install pianos in city parks. It was cited as essentially cost free to the city however I didn't hear anyone ask whether the local communities would agree with that assessment. It gets back to whether one looks at an expanse of green and sees it as "developed" or sees it as "empty," needing something added to make it useful. The notion of having pianos available to play around the city seems interesting and could be lots of fun. But I think the Commission should first find out whether these parks are currently used for other things ... playing chess, reading during lunch ... that would be disturbed by the pianos before agreeing to install them. As was the case with Inis Grove, parks have meanings for the people who live and work near them. It's incumbent upon the city to find out whether new uses would be impositions on some before deciding that the additions would incur no costs. You may decide that the benefits outweigh these costs but you should go into these things with your eyes open.

Finally, I note that the mission of Parks and Recreation is "To enrich lives by providing excellent parks, facilities and programs for current and future generations." **The economic development of the city is not part of your mission.** During the discussion of the Miracle League Field/All-Inclusive Playground one member of the Commission explicitly stated that Ames might miss out on an economic development opportunity were it not to construct these facilities. This worried her. Today members of the Commission discussed a potential facility in these terms and mentioned hotel rooms that would be filled were the facility to be developed. I think you should stick to your mission and not worry too much about the economic development of Ames. There are many others working in this area and I think they're doing a pretty good job. You have enough on your plate as it is.

Regards,

Martin Edelson

2417 Duff Avenue

FIRST NAME

Susan

LAST NAME

Teas

2. Please enter your question or comment here:

As a long-time Ames community member, an advocate of persons with intellectual and developmental disabilities, and a parent of four children who were active for decades in a variety of sports provided at Inis Grove, I would like to voice my strong support of "Inis Grove Option A" - placing the playground and Miracle League Field in the open space west of the tennis courts at Inis Grove Park. Thank you for supporting this much-needed community endeavor!

Ames Parks and Recreation Commission Members:

Prior to this afternoon's Commission meeting, I wanted to follow up with each of you regarding Item 4a, Staff Report on All-Inclusive Playground and Miracle League Field Location. I have included the text from my May 19th email below for your review and convenience, but would like to address a few

additional items for consideration. In reviewing the Commission Direction portion of the Staff Report, I would like to highlight the following regarding the 4 issues presented within this section:

1. Should the playground and the Miracle League Field be at the same location or separate locations?

- They need to be at the same location. This makes the most sense both economically and logistically and will assist in fundraising as well, as both projects will be at the same site. Having both at the same location is the most practical, attractive, and feasible option and the scheduled work to be done at Inis Grove to build new ADA compliant bathrooms, as well as the existing parking and stormwater infrastructure will save significant additional costs for the project, thereby making Option A: placing the playground and Miracle League Field in the open space west of the tennis courts at Inis Grove Park the best of the options presented.

2. Are there any concerns about locating this facility on non-city owned property?

- There are concerns, as the City will operate and maintain the facility, so having the playground and field located on a non-city owned property could prove problematic in the future operations and maintenance of the facility. A fine example is ISU owned Park lands throughout the city. It is much easier to operate and maintain a facility on city-owned property.

3. Should any of the below options not be considered?

- Please see below for additional justification for Option A.

a. Inis Grove Option A: as a Steering Committee that was formed from a Planning Committee that has been performing due diligence on this project for well over a year, we feel this option is by far the best of all of the presented options and ask that the Parks and Recreation Committee provide us some much needed certainty by moving forward with Option A.

While we appreciate the Ames Community School District's willingness to entertain the idea of placing the playground and park at the Ames Middle School, we as a Steering Committee maintain our strong support of Option A, which is to place the playground and Miracle League Field in the open space west of the tennis courts at Inis Grove Park, as illustrated in Attachment A. We ask the Commission to support this option and allow the Steering Committee to move forward with this project in the most timely manner possible, as we cannot afford to continue to delay this project any further.

b. Inis Grove Option B

c. Inis Grove Option C

d. Ames Middle School site

e. Lloyd Kurtz Park

f. Edwards School

g. Area west of the Dog Park

4. Is there any additional information to be considered prior to a recommendation?

- There certainly is additional information to consider, which can be seen below, but I will include it here as well. It includes:
 - o It has available land for the optimal field and park layout, including parking that allows individuals with limited mobility to park or be dropped off very close to the facilities;
 - o Has new bathrooms planned/budgeted for in the Capital Improvements Plan, which will decrease project costs significantly, as they can be bid together and built to be ADA compliant;
 - o Has existing parking that meets stormwater demands and requirements, and though additional parking may be needed, having the existing parking and stormwater in place is also a significant cost savings;
 - o It is outside the floodplain;
 - o It is centrally located and easy for individuals who are not familiar with Ames to find as they venture to Ames to enjoy the park or for sporting events at the field, which will also help with fundraising due to a high level of visibility;
 - o It is one of the City's most popular parks, and adding these facilities will only increase the park's value and popularity;
 - o Since it is a large park, with the addition of these facilities, there will still be ample green space for visitors to enjoy.

There will always be concerns with any project, and having attended the public meeting Monday, April 18th and May 19th I understand the main concern to be sufficient parking and ensuring overflow does not overtake the adjacent neighborhood or 24th Street. Those issues can easily be mitigated by additional parking laws and enforcement to ensure the highest level of safety for park users and residents alike.

Therefore, I ask as an Ames resident, active community member, and member of the Miracle League Field and All-Inclusive Playground Steering Committee, that the Commission provide this project some much needed certainty by moving forward with a recommendation of Option A: place the playground and Miracle League Field in the open space west of the tennis courts at Inis Grove Park. I thank you for your time and consideration and will look forward to seeing you at the meeting this afternoon.

All the Best,

Drew Kamp

Director of Story County Community Outreach

Director of Government Relations

Hello,

I understand there is a meeting tonight regarding the Miracle Field at Inis Grove Park. I'm unable to attend the meeting, but wanted to write to you in support of the Miracle Field.

My wife and I live at the corner of 24th and Kellogg, so we are one block away from Inis Grove Park, and we walk there frequently. The idea of an all-inclusive area such as this is very near and dear to us in our city, and reflects the sorts of values that we feel Ames has and should reflect.

I met my wife while working for Mainstream Living, nearly 25 years ago, and we still have friends who work for the organization, and we would welcome this inclusion nearby. The sound of anyone playing in our neighborhood is magic to our ears.

I've heard a few comments about parking being a problem at the park, but when we are there, we never see the parking lot full, so, unless we're missing something, I don't think that would be an issue at all.

Please feel free to contact us with any questions, etc., but know that we support this initiative, and we hope that it passes!

Thanks!
Bryon Dudley
322 24th St.
Ames.

I attended the parks commission on May 19th. I am fully in support of placing the accessible playground and Miracle Field at Inis Grove Park. My experience with the park goes back twenty years when my kids played soccer there. I understand the street parking concerns of the local residents who spoke at that meeting. Re locating soccer will alleviate most of the parking problems. This is a large community park. The needs of the larger community need to be considered along with the desires of a few highly vocal neighbors.

Sincerely, Thomas Russell

Hello Commissioners -

It's been three months now since the staff recommended action stating: "Staff feels it is a benefit and now is the time to pursue. Since there are no good options outside of park land for this purpose, the staff recommends Alternative #1, which is to place the all inclusive playground and Miracle League Field in Inis Grove Park". Also at that meeting, the Commission charged the staff to "put together a conceptual plan with an initial focus on Inis Grove Park, but not ruling out other locations".

Given the staff report that you are reviewing for today's meeting, it seems that the focus group - which I was a member of - could come up with no clear cut option to Inis Grove park. In my opinion, the meetings and the report, to some degree further the cause for the location of the playground and field at Inis Grove. For all the reasons you are well aware of, It makes sense on several levels: cost, access, existing utilities and aesthetics. Yes, I said aesthetics!

One of the underlying tones that has disturbed me during these discussions is the lack of support for the potential users of this facility. I am guessing that none of us have run across anyone who thinks the idea

of a All-Inclusive Playground and Miracle League Field somewhere in Ames is a bad idea. Where we stand today is the result of a group of citizens expressing concern as to whether the steering committee, the staff and the commission had done their homework. There had to be a better place for the playground and field. Well, there isn't. Inis Grove is a community park - not a neighborhood park. I contend that this facility, with proper design programming and creative solutions will make Inis Grove a much better place for all citizens - especially those that we have seem to forgotten in this process - those with disabilities. Why should there not be an effort to help them enjoy one of the City's nicest parks?

I remember thinking after the meeting in May that there were only two speakers that night that really mattered: the young lady who spoke from her wheel chair, Shelly Jaspering and Mary Anne Russel , who also has a disability. Mary Anne stated that this facility is needed "so people in the community can see us for what we can do and not for what we can't do." I think that is what we need to do tonight - do what we can do. Move this great project along by recommending that Inis Grove Park be the location for the all inclusive playground and Miracle League Field.

Thank you for your time! Jim

Jim Mason
Landscape Designer/Sales
Country Landscapes, Inc./Ames
Cell/Text: 515-231-6972
www.countrylandscapes.com

Dear Park and Rec Commission –

Before your meeting tonight I wanted to send you a note to thank you for your hard work and consideration that has gone into the Miracle League field and Accessible Playground.

While the current discussion and exploration process has delayed the project timeline I am pleased to know that your commission, members of the Ames community and interested partners have become *more* aware of the needs for accessible play and during this time. A clear understanding of the time, thought and effort that is has gone into this project by city staff and volunteers will benefit the project while moving forward.

It is *now* time to allow this opportunity to move forward. As a city we can and need to provide opportunities of play for people of *all* abilities. Please trust your staff in the hard work and hours that have gone into the research and information you have been provided so we don't delay for yet another year. The ISU women's basketball team and other groups are currently scheduling trips to the Ankeny Miracle league field to support their participants and members of the Ankeny community. As the City of Ames discusses retention and engagement of young professionals and young families this project provides opportunities for the young families and young professionals to be an engaged part of our Ames community - it does not send them to Ankeny as we currently are doing.

As volunteer member of the steering committee I have seen the information about site selection and want the best for people with mobility limitations to be able to participate. This project needs to be successful for the residents of Ames. I strongly encourage you to **select Option A** at Inis Grove location and begin the process to move forward. With the research and effort that has been collected about the location I see this as THE option to see success.

Please feel free to call or email with questions or discussion.

Good luck tonight!

Jay D. Lettow

Director of Development

Good afternoon,

I know you have been working at finding the best location for the Inclusive Playground and Miracle Field. Thank you for pursuing the request of building the park. I would recommend Inis Grove because of the CyRide routes and available parking on the North and East side of the park.

My children played soccer at Inis Grove and I could see the neighborhoods issues with traffic. There was always available parking in the lots, but the 1st place people would park was on 24th Street South of the Park. I think we could solve a number of neighborhood issues by not allowing parking on 24th.

A Park like this would be a welcome sight for so many misfortunate disabled people who live in Ames. I really think this is a good step forward in giving everyone in Ames the opportunity to live a more fulfilling life.

Again Thank you for all your hard work,

David Tucker
Assistant Vice President
Great Western Bank
316 S. Duff Ave.
Ames, IA 50010

Good morning!

I wanted to thank you for the time you gave everyone last night. Since I am not to quick on my feet, I was not able to articulate at the meeting a concern I had which seems to reflect an ongoing pattern in these discussions about the All Inclusive Playground and Miracle Field.

For over a year, a group of passionate citizens have been meeting as an exploratory group and then as a steering committee. We have had regular monthly meetings. Impromptu breakfast meetings, email discussions and phone conversations. This project has been top of mind for a lot of hours. We have done, with unbelievable help from Keith and the staff all the leg work as far as what this facility could be and where it should be located. I thought last night's meeting would be a slam dunk. With all that background information and the added knowledge that the "focus group" could not come up with a viable alternative I was hoping the commission would just tell Keith to come back to the September meeting with an action form laying out the official selection of Inis Grove Park and laying out the next steps - preliminary design, etc.

But no. A neighbor to Inis Grove Park stands up and said that he went to a meeting Wednesday (one meeting!) and thinks there is a good chance that this project could be located at the Middle School and

derails the whole discussion. He was not representing the commission. He was not representing the steering committee. He didn't even tell the school committee who he was representing. It was just another delay tactic to put this project off and hopefully stall it do to lack of interest. I also must say that I did not feel comfortable at all being put in a position where I felt the need to do rebuttal to Mr. Ebber's rebuttals during the meeting. It just didn't seem right to me. The committee and staff had done their homework and I assume the commission had also. For Mr. Ebberrs to ask for another month delay so he could get back with his constituents on these latest developments - they knew about last night's meeting as long as everyone else has - was not appropriate.

Now I'm rambling. Hopefully, you can see why I couldn't really gather these thoughts last night and probably wouldn't even said them if I did. My Mom told me if you don't have anything nice to say about someone, don't say it. We just want to see this project to move along and I think the commission does to. We will make it easier for you September 22 by filling the room with users of this facility and citizens who love the Inis Grove location.

Again, thanks for your time and efforts - Jim

Jim Mason
2016 Pinehurst Dr
Ames, IA 50010

To: Ames Parks and Recreation board

5 September 2016

I have recently learned from neighbors about the proposal before the Ames Parks and Recreation board to convert the Inis Grove Park open green space into another sports venue, this time the Miracle League, a quasi-private entity. On checking for previous public notice I found one article I missed in the Ames Tribune and a segment on WOI-TV last spring. However I have not had any information from the city re: this proposal that affects our neighborhood. From what I have been able to determine I would like the Parks and Recreation board to consider the following comments.

Using Inis Grove Park for Miracle League

1 Essentially changes the character of the neighborhood analogous to rezoning

2 Is this necessary because no other land is available? Hard to believe -what about south of the Ames Golf and Country Club?

3 Essentially destroys the usefulness of one of the premier parks in Ames for anything other than volleyball, tennis and Miracle League. What is left is a pocket park in the northwest portion of Inis Grove Park. The remainder are small single use tracts of what used to be a neighborhood park. Check the definition of "park" - a space set aside for the pleasure of the public - if one doesn't play volleyball, tennis, or participate in disability sports one will be out of luck at Inis Grove Park. In my opinion, repurposing Inis Grove park is to say the City of Ames does not value open flat creative park space.

4 Ceding some control of city park land to a private enterprise may not be

appropriate or legal and may not be consistent with the original intent of the donor of the land for city park use.

5 It essentially makes that portion of Inis Grove Park a single use space for scheduled sports

6 This says to the world (people looking at Ames as a place to live) we don't value sizable open spaces for casual non-scheduled recreation.

7 Currently the park is used by not only the neighborhood but by many other groups for picnics, playground, students playing soccer, frisbee, and various other games,

8 Miracle League proponents are saying, we want public space to use for our purpose and priorities, those of you who used to use this space can find somewhere else for your recreation

9 This repurposing of the public park land potentially decreases property values in the general vicinity because of the size of the operation, noise, nighttime lighting, large scoreboards, high fences, etc. There will be limited street parking to augment the small lot directly north and the lot by the tennis and volleyball courts. The street parking will be mostly affecting residential areas and a heavily traveled Duff avenue.

10 It is not possible to mitigate the impact on the neighborhood by buffering as there is not enough space available in the open green space desired by Miracle League proponents to adequately shield the neighborhood from the activity of the ballpark. Previously ballfields have been placed in areas away from residential areas or buffered.

11 Finding an alternative site for the Miracle League, a commendable enterprise, is the responsibility of those championing this activity.

12 Notifying the public about any major repurposing of park land should be routine procedure.

Louis Banitt
2514 Kellogg Ave
Ames, IA 50010-4836
525-232-1122
doc@crosspaths.net

Hello Commissioners,

I wanted to share with you my letter to the Editor of the Ames Tribune which I anticipate will be published.

I ask you you to consider this deeply as you will be making decision on Thursday which will chart the future of parks in the City of Ames. While the project is important and needed, the location and use of

community parks is a fundamental question for Ames residents and the neighborhoods in which they reside.

There are so many unanswered questions about this project including the storm water detention area, the design concept, traffic safety, impact on the neighborhood and the unwillingness to be proactive in considering other location options.

Thank you.

Larry Ebbers
220 24th Street
Ames, IA
515 290 9854

-----Original Message-----

From: bebbers@isunet.net
Sent: Wednesday, September 7, 2016 1:50pm
To: letters@amestrib.com
Cc: "Barbara Ebbers" <bebbers@isunet.net>
Subject: Save Inis Grove Park

As a former Ames Parks and Recreation Commissioner and neighborhood resident, I am concerned about the future use of Inis Grove Park. There is a proposal before the Ames Parks and Recreation Commission to demonstrably alter the use and beauty of Inis Grove Park. The P&R staff has recommended building a Miracle League Ball Park and Playground in the area bordering Duff and 24th Street. While I support the idea of a ballpark and playground for special needs persons, I believe it is the wrong location. The project will take approximately 2.5 acres of the front part of the park. Almost all of these facilities are either in sports complexes or adjacent to schools to maximize their use.

Inis Grove Park, a community park, is already in danger of becoming a sports complex. Recently four new sand volleyball courts were added near the existing tennis, pickle ball and basketball courts.

The residents and friends of Inis Grove should not be asked to absorb another large activity complete with fencing, bleachers, lights, sound system and scoreboard. The area is already compacted by limited access to the park and traffic issues.

But the real concern is the quick and easy decision to locate it in Inis Grove. The Ames Community will no longer have one of the most beautiful parks to enjoy the beauty of nature, green spaces, open playgrounds and access to Walnut Shelter. Soon the park will be filled with residents and visitors to view the Fall beauty. I am asking for your support to save the park for future generations. On the 100th anniversary of our parks system we need to be vigilant about protecting them.

Express your concerns to Commissioners or Ames City Council members. A vote will be taken at the Parks and Rec Commission meeting September 15 at 4 PM in the City Council Chambers.

Larry Ebbers

220 24th Street
Ames, IA
515 290 9854

The miracle league park would have something for everyone of all races gender ages and abilities.

Community gatherings for all members not just some.

From the experience of one of our members here at the ACE Program the Miracle League soft ball games last only 1/2 hour to 45 minutes.

There would be access for people from surrounding communities at Inis Grove.

Ace not only does adopt a garden at the Shargbark Shelter every year we also enjoy grilling class, and big mainstream bbq [s.at](#) Inis Grove.

When we do all day outings it would be beneficial to our peers as well as family members with disabilities to be able to load and unload folks in a wheelchair's for an all day fun time where they can play a baseball game and use the playground and have a picnic lunch at one of the beautiful shelters while still enjoying the beautiful greenery of the park.

Joyous noises would be heard near and far isn't that the point of the park.

If this Miracle League Park were to be built and loacated at a School it would only be accessble during certain hours to keep from distracting students this is why a park is normally at a park to have fun not limited to hours and space.

-- Marianne Russell Amber stukenholtz Sarah Toot Ruben Holland Wendy Thomspen Mark Kitchen, Judy Schieffer

Judy Schieffer

ACE Program Mainstream Living
823 Wheeler Dr Ames Iowa 50010
515-291-1436

Dear Members of the Park & Recreation Commission,

We'd like to share some reasons why the proposed Miracle League & All-Inclusive Park should be located at Inis Grove.

- 1.) The park will provide opportunities for all people to volunteer and gather outdoors.
- 2.) There is beautiful nature surrounding the park, this will be another added perk for visitors.
- 3.) Inis Grove is well shaded. Often times people who have serious disabilities cannot be out in the sun too long. This location offers many shaded areas so, everyone can be comfortable together.
- 4.) Inis Gove is easily accessed via CyRide.
- 5.) Currently the park is already more accessible than other parks for people who are in wheelchairs. As the parking lots are closer to the shelters which makes loading and unloading easier.
- 6.) If the All-Inclusive Park & Miracle League is at Inis Grove it will provide many activities for groups to spend the day there. People from area communities would visit Ames for the park and will more than likely spend money in Ames as well.

7.) Our community needs an outdoor place where everyone can gather.

-Imagine having a family member with a disability and trying to find a park for a family reunion. This park would provide an outdoor community space for All abilities!

Thank You for taking time to read this email.

Sincerely,

Erin Goldsmith
Onnalee Miller
Susanna Zaharivea
MissyWierson

--

ACE Program
Mainstream Living
515-291-1436

All,

I would like to voice my support for the proposed Miracle Field being built in Ines Grove Park. I believe anything that we as a community can do to increase public use of our parks is a positive and I think Ines Grove is the perfect spot for this type of facility. The Miracle Field concept not only provides an activity for citizens with disabilities but allows an opportunity for volunteerism and teaching moments with youth and others who assist with the events.

I applaud the individuals who have championed this cause and hope you will support them by voting yes to put the Miracle Field at Ines Grove.

Regards,

JJ

John Jennett
Market President
Great Western Bank
316 South Duff
Ames, IA 50010



Ames Golden K Kiwanis Club

3925 Hoover Ave., Ames, Iowa 50010, telephone: 515-290-9339
e-mail: l.trede@mchsi.com website: www.amesgoldenk.org

September 9, 2016

Ames Parks and Recreation Commission
1500 Gateway Hills Park Dr.
Ames, Iowa 50010

Dear Commissioners:

This letter is written in support of the Miracle League Field and All-Inclusive Playground being proposed for City of Ames to be located at Inis Grove Park. On September 8, 2016, the park concept and location was discussed by the Board of Directors of the Ames Golden K Kiwanis Club and motion of support for the concept and location was passed by the Board.

Kiwanis International and local Kiwanis clubs in Ames have as their mission, "to improve the world, one child and one community at a time." The concept of an all-inclusive playground and Miracle Field being proposed in Ames complements our mission very well. Kiwanis clubs in the Des Moines and Ankeny areas were involved with similar projects already established in those communities.


We feel that there are several advantages of the Inis Grove location. First, Inis Grove is located outside of a floodplain which is crucial due to the surfaces used for the Miracle Field. Second, there is ample land available to accommodate the field, parking with infrastructure that will allow individuals with limited mobility to park or be dropped off at the facility, and ample land that does not interfere with other park activities and green space for enjoyment by all park users. Third, Inis Grove location is easily accessible and centrally located for users who may not be familiar with Ames and may come to Ames to enjoy the park or participate in sporting events held at the field. Lastly, the city of Ames has already planned new ADA compliant restrooms to be constructed at Inis Grove site which will decrease the overall project cost of the Miracle League Field.

In summary, Inis Grove is generally considered to be a community park and not just a neighborhood park and is one of the city's most popular parks. Constructing the Miracle Field in concert with an All-inclusive playground will benefit the city, Story County, and the entire region.

We hope the Commission will approve the project and its proposed location.

Sincerely


James Cornette
President


Carlton "Pete" Peterson
President-Elect

"dedicated to improving the world one child and one community at a time"

Hello members of the Ames parks commission and Keith Abraham,

My name is Tom Russell. I am the parent of two adult daughters with disabilities. I have written to you before in support of the Miracle Field and accessible playground project. I felt the need to write again

when I saw this slide show that was apparently presented to the city council. I was surprised by the slanted perspective and lack of community spirit that was reflected.

I won't take the time to go through slide by slide and point out what those of you who have studied this issue already know. I did want to highlight a few of the glaring misrepresentations put forward.

It was surprising to me to see this slick production that represents such a narrow vision.

□ If built in Inis Grove Park, the baseball field would dominate the area east from Duff Avenue, effectively destroying the usefulness of one of the premier parks in Ames.

This is absurd on the face of it. The usefulness of the park to an underserved portion of the Ames community would be created. Nothing is destroyed. All the picnic shelters and meeting places are still there. Most of the green space we enjoy is still there.

□ • Check the definition of "park" - a space set aside for the pleasure of the public.

The author seems to think the definition means set aside for their personal pleasure. What about people who enjoy gathering for volley ball or tennis or to play on a ballfield. What about people with disabilities? This suggests they aren't part of the public and their needs aren't important.

• • Repurposing Inis Grove Park is to say the City of Ames does not value open creative park space.

This in no way repurposes the park. It expands the park's purpose as a place of recreation for all citizens of Ames.

• Miracle League proponents are saying, we want public space to use for our purpose and priorities, those of you who used to use this space can find somewhere else for your recreation.

Fellow taxpayers, friends and family members of people with disabilities, and many other members of the public are saying we want to join in using this space so we can all have places for recreation.

There is room for everyone in this large city park. That's why this is a win win situation. We can all enjoy the park.

I am excited that the city of Ames is finally looking to provide much needed recreation areas for people with disabilities.

Sincerely,

Tom Russell

Site Visitor Name: Doan Schmitz
Site Visitor Email: doan@iastate.edu

Left message. heads-up I supportive of the boards decision to place Miracle League Park I do have a few questions if you had time to call.

FIRST NAME

Harlan

LAST NAME

Hanson

2. Please enter your question or comment here:

Would like to see Miracle field plans and specifications planned for Inis Grove park. Please call me at 515 290 2111 so I can come to your office to view on Monday.

Thank you

Re: Miracle Field
Inis Grove Park
Ames, IA

Our names are Barbara and Harlan Hanson and our residence is 2717 Duff Ave., directly across from the north entrance. We have lived in Ames since 1968 and in the Inis Grove Park since 2001, and in the area since 1983.

We have observed the many family activities that go on at the Park. Often in the summer, the shelters are occupied by three or four different groups in one day. Many of the schools here and from neighboring towns bring students for end of year activities. Parks and Rec. summer programs utilize this area also. Impromptu soccer occupies many hours on Sunday afternoons as well as some evenings. It is a great family place.

We are concerned about PARKING and SAFETY. (Duff Ave. is an approved truck route with heavy fast traffic.) Many times with large picnics all the parking is taken and there has to be on street parking. What will the Miracle Field Parking users add to the parking issue? Coming onto Duff Ave from the East on 24th the driver has limited vision of North Bound Traffic. Coming onto Duff Ave from the North exit there is a BLIND spot on South Bound traffic at the hill to the North. For SAFETY we feel there would need to be a TRAFFIC LIGHT AT 24TH STREET INTERSECTION.

The park is surrounded by an established neighborhood. There will be sound issues, as observed at the Ankeny Miracle Field, the sound system can be heard at least 3 blocks away. If one of the children would become separated from his or her supervisor the ravine could be a huge hazard. Duff Ave. is very close and the same safety issue could be huge.

With all these safety issues, WHAT LIABILITY IS THE CITY OF AMES GOING TO HAVE IN CASE OF INJURY OR DEATH?

We are in favor of the project but not at this location. We know many special needs people and understand they have special needs. We attended the BEEP BALL INTERNATIONAL TOURNAMENT which was in Ames this past summer, with participants from many states. It was amazing to see these visually impaired have so much fun. Incidentally there was no coverage in the Ames Tribune except for the one article on the girl from our local area.

We understand this project has been on the back burner for a while. Why is it all of a sudden a priority? More time needs to be taken on choosing the location. Part of the park has already been taken by the sand volleyball and tennis courts. The sand volley ball courts have not opened, so how do we know how much parking they will take?

We need the rest of the GREEN SPACE FOR THE COMMUNITY. We did not realize the impact the parks have on the Ames Community until we moved to Duff Ave. and observe the park every day. We feel

people not living close to the parks do not realize the amount of usage the parks have and how important they are to the City of Ames.

Sincerely,



Harlan and Barbara Hanson

CC: Keith Abraham, Director Ames Parks and Rec.

Steve Schainker, City Manager

Ann Campbell, Mayor

Larry Ebbers, Neighbor to Innis Grove

Parks and Recreation Commission:

I am writing as a citizen of Ames that is in support of locating a Miracle Field at Innis Grove Park. The Miracle Field would provide an area in Ames with an inclusive playground that has a fully accessible play area designed for all - including individuals with disabilities. It is my understanding that there is a petition against locating the park at Innis Grove including concerns cited as additional noise and traffic and removal of green space, with comments made publicly that it would "ruin the park", that "this is a quiet park", and "there will be more children running around".

I ask that when you meet tomorrow to decide if the field can be located at Innis Grove, please be mindful of what it means to have a park in Ames. Homeowner's in the area that bought next to the park made a choice to purchase their home there, knowing it is a gathering spot for people. With people, may come more traffic, noise, and children. There is plenty of parking to keep visitors from parking along 24th (if that is even allowed). Also, please keep in mind that if this type of project is denied due to wanting to keep green space and limit noise (reasons for the petition), all future projects located at Innis Grove should be denied as well, otherwise it would seem discriminatory against individuals with disabilities in my opinion. Based on the available green space (21 acres), it seems the required 1.5 acres to implement would be reasonable and still leave plenty of open space for other activities. The Miracle Field would be a great additional to Ames and our park offerings.

Please vote in support of the Miracle Field at Innis Grove Park.

Thank you,

Jennifer Hanson

2406 Camden Dr.

Ames, IA 50010

Dear members of the Parks and Recreation Commission:

It was brought to my attention that tomorrow you will vote on the project that would take a small part of Innis Grove Park and turn it into an inclusive playground and a Miracle Field.

I am writing today to express my **STRONG SUPPORT** for this project. As a geologist, I am well aware of the risk of flooding in large parts of Ames, and Innis Grove Park is pretty much the only place in Ames where the risk is non-existent and such a facility could be located. As a disabled person, I want to believe

that the Ames community would support the establishment of a facility that would provide a suitable recreational space for disabled children and adults.

I am counting on your support for this worthy project and your efforts to continue to ensure that Ames is a welcoming and inclusive community.

Sincerely,
Cinzia Cervato

Dr. Cinzia Cervato, 3010 Almond Rd., Ames, IA 50014

Dear Ames Parks and Recreation Commission,

As a sibling of a brother with a disability, I see the value in adding an inclusive playground and Miracle Field to Ames. While he does not have any physical limitations, his roommates and friends certainly do. Because of this, he doesn't get to interact with his friends like other children get to because his friends might have various limitations.

I believe Inis Grove to be the ideal location due to its accessibility (it's very flat), the safety of the site, the availability and proximity of parking and restrooms, access to CyRide, no flooding issues, and visibility. It's been brought to my attention that of the 20 other locations researched, none of them met all of these criteria besides Inis Grove.

I understand some residents are opposed to the facility being located in the park due to increase noise and traffic and displacement of green space, however, I don't believe it will be significant enough to affect these residents even in the slightest. The noise would not be noticed as the facility would accommodate for daytime activities and the park is meant for more people than use it currently. As many times as I drive by Inis Grove, I never see it being fully utilized. Additionally, Inis Grove is a 42 acre park, with 21 acres considered undeveloped. This project would take approximately 1.5 acres, still leaving a considerable amount of green space.

I am asking you to vote yes on moving the project forward at Inis Grove which would make a statement that EVERYONE in our community should have the opportunity to experience a playground, to play a sport, and to interact with their peers.

Thank you for your time.

Makenzie Heddens
3814 Quebec Street
Ames, IA 50014

Keith,

Rick and I are very much in favor of the playground. I am not able to attend the meeting tomorrow as I already have a meeting scheduled for that time.

We have seen reporting of the opposition to the proposed Inis Grove location. It appears to be the best choice in terms of visibility, space and is on a Cy Ride route. We did go and visit the Miracle Field and playground in Ankeny - very well done.

Good luck to the commission on making a recommendation. I have forwarded the information and background on the proposals to interested friends.

Janet

All;

Understanding a petition drive has been created to change or veto the location of the recommended location for the Miracle Field at Enis Grove Park, I want to share that I support the need, desire and the location of the Field.

My understanding is that a committee was put in place to make a study and recommendation. After the extensive work conducted by the committee and the criteria required, why second guess the entire process and plan? Of course the Park may experience more visitors and more use. Isn't the very purpose for a community park to encourage individuals from throughout the area to visit, use, and experience the facilities? Furthermore, expanding the usage of the park and facilities should be a priority for the Parks and Recreation Board in order to enhance the enjoyment of those that have been restricted from the extra-curricular activities you and I take for granted wherever we go.

The committee has done its homework. They have done an extensive study. They have completed the research. They have made a recommendation. Support their decision.

With best regards,

Kent

Kent R Frankenfeld
2410 Cottonwood Rd
Ames, IA 50014
kentfrankenfeld@netscape.net

To whom it may concern:

This letter is being written in support of the Miracle League Field and All-inclusive Playground being located at Inis Grove Park in Ames. We, the members of the Nevada Golden K Kiwanis and their families, definitely support this project and recommend that the Parks Commission move ahead with plans for this plan which will benefit more than 500 children and 300 adults in Story County with intellectual and developmental disabilities.

Inis Grove is a fine locality for both the Miracle Field and the Playground logistically and already has many of the fine features which will enhance this new addition. Financial advantages are also numerous because of the excellent infrastructure already in place.

As shown by the good response to the Softball Tournament fundraiser, our Kiwanians are more than willing to support this project as part of our International motto to serve and improve the quality of the life of our children.

Thank you for your consideration of this worthwhile addition to our Community.

Sincerely,

Darrell Staley, President Nevada Golden K Kiwanis, 515-231-5385

Richard Ragner
Richard Atwell
Ken Shaw
Marcia Wisniewski
Beverly Packard
Mary Ann Roegner
Evelyn Onstad
Marsha Jackson
Harold Jackson
Bob Collins
Bill Ward
Lewen Ward

Patty Kitzee
Mary Perestoy
John Hoge
Cindy Settle
Darrell D. Staley

Dear Parks and Rec Commission members and Staff Director,

As a committee and staff, I greatly appreciate all of the time and effort that you put into making our community a better place, and I first want to thank you for that.

I want to share my excitement for the idea of building a Miracle League Field as I think it is a very positive project for the community of Ames. So much so, that I can't urge you enough to please plan for it to be placed on a site that can provide the best possible access/uses that it deserves and the potential for expansion in the future. If this is done – I think the Field can flourish as a really bright spot and something that the whole community of Ames can be enthused to support for many, many years.

Given the importance of the crucial decision on site location of the Field, I feel compelled to say that I think that the site for a project of this magnitude begs to have more space around it than is available at what seems to be the latest focus area of Inis Grove Park.

With the Inis Grove Park location and also on the proposed site plan sketches, I foresee many space issues which if overlooked will ultimately result in this project being “shoe horned” into a space that was never intended to have a facility of this magnitude in it. Issues such as:

1. The field facility in general needs to be very accessible distance wise to all handicapped individuals and their caretakers. Logistically drop off points by vehicle should be close to the facility.
2. Many users of the facility or spectators will arrive in special use vans or mini-buses. These vehicles need appropriate space to be able to unload/load, turn around, and park without having to navigate around other pedestrians or guests arriving. A dead end parking lot is the worst thing that you can have in this environment.
3. Likewise, road side parking is not an acceptable type of space for users and guests of this facility to be forced to use as it is very unsafe for children especially to be getting in and out of vehicles and walking between vehicles when moving vehicles are at street speeds in 2 lane traffic going past them.
4. The above combined concerns I feel would mean that the only way that adapting Inis Grove Park to accommodate the Field would be to tear down some of the current facilities to make way for doubling the off-street parking and a whole new layout of the open spaces that are left there currently.
5. I also feel that the current sketches of how big the Field will be are deceiving as I think that when a design is fully drawn out it will indicate the need for more space around the diamond for movement, spectators, and etc.. In fact, I think a first class Miracle League Field space design should include spaces adjacent to the field which are more like shelter houses covered with roofs or sun shades of some sort. Daytime events can have pretty intense sun exposure for those attending or waiting their turn to play, especially if they are not used to being outdoors a lot.
6. While the current open green space on the SW corner of Inis Grove may look like it is just grass space that is not being used, I think you would be surprised how much it is used very frequently for games by users of the shelter house, for Iowa Games events, practices and games by local soccer and flag football teams, frisbee soccer games, kids flying kites, and people just enjoying public open space that does not have to be “reserved” for such activities.

7. All of the current shelter houses at Inis Grove frequently have groups use them in evenings and on weekends to gather as many as 100 people in each. Again, I think there is no way to accommodate those size groups and then add in the magnitude of traffic and use that the Miracle League Field will bring to the area.
8. The city has just substantially invested in the Tennis Courts re-surface and the new Volleyball courts. This will undoubtedly bring more users to the area as the word gets out into the community. I don't think there is any way that you can currently predict what the potential of these better facilities will generate for use, but I would think that the city should not stifle that investment by putting another one on top of it causing crowding or limited use times to avoid crowding.

The bottom line is that the current Inis Grove Park works well now for what it is intended to be and bringing in a major facility like the Miracle League Field will mean displacing many current uses and users which will ultimately either become less active or request a new place for their use. I don't see the logic in destroying something that currently works only to have it put pressure on some other facility need.

I think that the city should search out the perfect location for the Miracle League Field and purchase it if need be. An example of what I feel needs to happen can best be illustrated by the old Carr Pool dilemma. The current facility could not be made to be what the community needed due to space limitations so new grounds were acquired for the now Furman Aquatics Center.

The Miracle League Field deserves that same type of first class community space.

Respectfully submitted,

Rich Lepper

To Whom it May Concern,

It has been brought to my attention that a location has been recommended for an inclusive playground and miracle field at Inis Grove. To simply say I support this notion may not do justice.

A little background on me. I was raised in Gilbert, lived in Ames, self-employed as a Realtor at RE/MAX in town, and I am currently serving on the board for the Boys & Girls Club of Story County. My wife and I have two children with a third one due within the next month.

As a parent, I want the best for my children. I think most parents do. I want to afford them every opportunity that I can and allow them to try different activities/sports. That doesn't mean we do everything, but it does mean that they will be able to try different things such as soccer, basketball, dance, gymnastics, martial arts, piano, ect. Now, lets put ourselves in the shoes of a parent that has a child with disabilities. What options would you have? Jeez, I don't even know if I were to be quite honest. That said, I would want still want the very best for my child -- that wouldn't change. My daughter LOVES going to the playground. In fact, we have been to numerous playgrounds throughout Ames, Huxley, and Ankeny. I wonder how many playground options a parent of a child with disabilities has? Ankeny?

So I hear that there is a petition for this playground to be located at Inis Park for a number of reasons including:

1. It may ruin the park
2. That is a quite park

3. Their will be more children around
4. The park will loose some green space
5. The property value may go down

I don't believe for a second that the addition of an inclusive playground and/or miracle park would "ruin the park". Yes, the park would be a little more busy. Yes, there would be more children around. Yes, the park would loose a little more green space. Are those bad things? The park generously sized at 41 acres. I would submit that maybe it isn't being utilized enough.

In regards to number 5. It would be my professional opinion that property values would see little change due to the fact of adding a miracle park and inclusive playground. Most all buyers will still look favorably upon the location because the park is there, period.

I believe that the addition of an inclusive playground and miracle park to the community would be huge asset and I support the committee's recommendation.

Thanks!

Lloyd Flanders CRS, GRI, e-PRO
(515) 450-9890 Cell | Text
LloydFlandersRealEstate.com
Lloyd@LloydRealtor.com
RE/MAX Real Estate Center
1606 S. Duff Ave. Ste. 100
Ames, IA 50010

Dear all,

I fully support to choose Inis Grove Park as the location for a special playground where can be used by all kids and adults including kids/adults have special needs.

Thanks for the consideration.

Lisa Shen

As a leader within this community, and an advocate for youth, I strongly encourage the Parks and Recreation board to proceed with creating an inclusive playground as the committee has recommended. Making sure that all our community's children have *access* to public spaces that are developmental appropriate is critical to their wellbeing.

Sincerely,
Erika K Peterson
Chief Executive Officer
Boys & Girls Club of Story County
210 South 5th Street, Ames, IA 50010
515.233.1872 office
720.982.4174 mobile
www.bgcstorycounty.org
epeterson@bgcstorycounty.org

Dear Members of the Parks and Rec Commission,

It has been brought to my attention that you are facing an important vote this week regarding the addition of 1.5 acres of space which will be dedicated to our area residents with disabilities.

In this noisy world of people who are afraid of anyone who looks differently than you or I do, please make the right decision and ignore them. Embrace those who are not the same, who don't have the same voice that we do, who don't have the same opportunities as we do, who can't use their physical bodies the same way we do, and give them a place where they can run and play and laugh, exactly the way you and I do!

Vote "YES" to the Miracle Field and give our disabled community a place to play freely.

*Heather Botine
3201 Foxley Dr.
Ames, IA*

Good afternoon to each of you,

As a parent and Ames resident, I urge you to take the committee's recommendation and move forward with the Inis Grove Miracle Field. We have nothing like it in town, as far as I am aware. The committee worked hard and found a great place to put the field. It will be wonderful to get children and adults of all ability levels to play with and cheer for one another. The neighborhood residents that are opposed to the development have seen periods of fuller use of the park and more recent quiet times. They will adjust quickly to the happy noises of such a great field. Every hour a family is using the park and enjoying the outdoors is an hour away from screens, gaming, or other less-than-ideal pastimes. Ames needs this Miracle Field.

Thank you for your consideration,

Andra Reason
814-880-9045

Dear members of the Parks and Recreation Committee:

This is to express my enthusiastic support of the proposed playground, in the site of Inis Grove Park. There has been a lot of misinformation bandied about concerning this project, and I wish I could be there, but I cannot make it to the meeting.

We have 37 parks in this town, catering to tennis players, ball players, golfers, Frisbee golfers, etc. Any of these could be considered "special interest groups". And yet the City of Ames caters to them. Suddenly when it comes to the special group of "special needs" citizens, there's a lot of push-back. I realize that all 37 parks have been assessed and this is the best place due to its central location, being away from risk of flooding, and the fact that there's sufficient space. It's time for a few discontented neighbors to accept that yes, some handicapped children and their parents will be around. Where were they when the Inis Grove tennis court project was proposed?

I am a physical therapist and have seen what regular exercise can do for the body and the mind and spirit of kids. Let's move on this project, for the good of our city and our citizens.

Approve this project please.

Sincerely, Ria Keinert, Ames IA

First of all, thank you so much for your work on the commission. Ames is blessed with having many parks and recreation spaces for families to enjoy year round. I have been following the research the commission has been doing to bring this much needed playground & ballpark to Ames. I know change can be hard & those living near Inis Grove could be hesitant to add traffic to their neighborhood, but the park is so large and conveniently located that using 1.5 acres of 42 acres shouldn't be an inconvenience to those nearby. In visiting these parks in other cities, I have been amazed that this is not already available in Ames and look forward to the park's completion and use by those currently underserved in our community.

Thank you for your time

Shannon Chieves
120 Ken Maril Rd.
Ames, IA 50010
515.291.5643

Dear Ames Parks and Recreation Commission Members:

I am delighted to see that a dedicated group of community members is working to bring an inclusive playground and Miracle Field to Ames. A facility like this is long overdue. Growing up with Juvenile Rheumatoid Arthritis, I know first-hand the challenges and frustrations kids with physical disabilities face when it comes to simply playing with friends. The type of inclusive playground being proposed allows all children the opportunity to enjoy the outdoors and be an ordinary kid.

As demonstrated in the proposal, Inis Grove Park is an ideal location for this type of playground. Frankly, I am amazed by the blatantly selfish reaction of area residents. Instead of offering a warm welcome to special needs children and their families by sharing this wonderful resource, neighbors gather signatures on a petition to keep them out. I find it interesting that residents are expressing concern about noise, loss of green space and additional traffic; treating a public park like their own private green space. Inis Grove Park is an under-used resource that needs to be shared with all members of our community.

As members of the Ames Parks and Recreation Commission, I respectfully ask that you move forward with the Miracle Field project at Inis Grove Park.

Thank you!

Jan M. Bauer
2800 Pinehurst Circle
Ames, IA 50010-4562
515-292-3739

Everyone,
I would like you to consider Inis Grove Park as the location for the Miracle Field (small baseball field). While the parking in the area is not the best for lots of cars, and side streets need to be utilized,

the area is perfect for such a field. I have spent many Saturdays, watching soccer games there for my children and feel the location does make the most sense. People of all ages should have the opportunity to play such team games and the location gives people with special needs the best accessibility. I have worked with families with children with disabilities birth to three and have stayed in contact with many of these families and hear their disappointment when their children don't have access to playgrounds and team activities.

Please consider the Miracle Field.

Diane Baldrige

First, I want to thank you for your staff's quick response to my dog park concerns. I really appreciate it.

Second, I want to compliment you and your staff for new volleyball courts at Inis Grove Park. I walk my parks almost every day at the park, so it is important to me. I must admit that I was skeptical at first how the volleyball courts would "fit in" and I had concerns about the drainage issues there. However, in watching the construction progress and now, after visiting the park the past two nights and seeing the courts in use, I have to tell you how well they "fit in" and apparently, they are getting very heavy use already. It's like a "bowl" surrounded by trees, which insulates the courts from the surrounding park area and the residential area to the south. It's a great use of an underutilized area of one of our city parks.

Now my concern. I support wholeheartedly a Miracle Field and accessible playground for Ames, but the Inis Grove site causes me great concern because: there is inadequate parking (it's already a problem when disc football players clog 24th St.); distance away from restrooms (I assume the ones off Duff Ave. will be the ones made accessible); and lighting. If the new volleyball court lights are an indication of the intensity needed (and I assume so, since adequate lighting is absolutely necessary for people with mobility disabilities), then that will seriously impact people living across from the park along 24th St. and Duff Ave. I am not affected, as I live a few blocks away, but I am sympathetic to their concerns about lighting, parking and traffic.

Thank you for listening to my concerns. I know your are in a difficult position, having to balance the recreational needs of all of our citizens, and the living condition concerns of all of our residents. I wish you well in the upcoming discussion and development of a solution that benefits all.

Good morning, I am a registered childcare provider of 18 years. My program consists of traditional child care, crisis and respite care. I've been informed that their will be a vote to move forward with the Miracle playground. I love the name of theses playgrounds because seeing special needs children/adults be able to truly play to their full hearts desire is a wonderful miracle. Children immensely learn through play and this Miracle Park would empower their ability and desire to play. Children and special needs adults would not only thrive independently but also through and with peers as a group. I respectfully ask you to vote for this park to happen as it would empower all special needs to truly thrive.

Respectfully,
Jennel Clarke

Greetings,

I'm writing to you today as a fellow citizen of Ames to first thank you for your service on the Parks and Rec Commission. I hope this message reaches you before the meeting tonight. I encourage your vote in favor of the Miracle Field at Inis Grove.

I'm familiar with the concept of this type of playground and the space available at Inis Grove. I trust that the parties who researched possible sites chose the best one for our community. I think it is a great match, in fact. Children with disabilities deserve the best we have to offer, NOT to be pushed to the fringes of the community.

I find it incredibly sad that the "not in my back yard" mentality has seeped into this project. From what I understand there was potential misinformation circulated while door knocking. I think the Commission has the best ability to see the value in the project and its placement. A Miracle Field at Inis Grove will be a gem in our park system.

Respectfully,

Kristin Pates

2914 Somerset Dr, Ames
563-260-0457

I am writing in support of the inclusive playground at Inis Grove Park. I am well aware of the work that has been done already in favor of finding an appropriate location and I have full trust in the group's finding that Inis Grove is an appropriate location for the park. I have enjoyed Inis Grove Park for forty years, from exploring the woods as a Camp Canwita camper as a child, to sand volleyball matches as a teen, and now taking my own children there as an adult. There is no part of me that feels that including the capacity for individuals with disabilities to play there would "ruin" Inis Grove, in fact, I believe it will only improve it. I have visited similar inclusive playgrounds in Des Moines, Ankeny and Kearney, NE and have long wondered why Ames hasn't yet embraced a similar concept. I hope you'll vote to help move the park forward at today's meeting!

Alison Doyle

HI Ed ~ THANKS for sharing the info forward about the 'all inclusive playground'. Interesting indeed. I have two other commitments today at 4pm, so unless I lose one of them or more, I won't be in person at the public input session.

All Inclusive Park: I'm in favor of the concept, understand why they want to combine facilities into one location, and am comfortable with the Inis Grove location.

I am most concerned about the footprint, that is, how the design will address and minimize negative impacts on aesthetics, wildlife and water that result from the 'loss' of the green space.

- It looks like ALL the surfaces have to be impermeable to facilitate accessibility and safety. However, I strongly believe that any new infrastructure in the city should be designed to capture and infiltrate rain where it falls -- so the water management within the site needs to be well-considered. If the design is simply about rapidly shoving the water off the site, that is insufficient.
- I also feel strongly that the design and infrastructure should creatively complement the natural elements of the park itself. Several of those examples were just ugly — to me they looked like

messy carnivals. I think the idea is for folks to be able to learn and explore the outdoor spaces, not to be entertained by them.

With respect to the Moore Park Bridge, I am personally in support of this project. I believe that we need to continue to invest in infrastructure that links trails and green spaces for connected corridors. This project addresses my interest in improving trails and green space connectivity in Ames. I believe there also is a letter of support submitted from the Ames Bicycle Coalition. The Ames Bicycle Coalition discussed this project and is in favor of it moving forward. If that doesn't show up in the 'record' for input, please let me know and I'll see that it gets moved forward.

THANKS, Ed, for your prompt attention and all the info. ~ Jeri

Jeri Neal
916 Ridgewood Ave
Ames, IA 50010

Hello!

After reading about the Miracle League plan in the Ames Tribune this weekend, as well as hearing a little about it from neighbors in the Inis Grove area, I am interested in seeing the actual proposal. Is it online anywhere?

Based on the flimsy information printed in the Tribune, I have several questions that I hope you or another Parks Commission/City Council member can answer. Please remember that I have not read the actual proposal and that others I have talked to about this plan also do not know what is being considered, so our questions may appear naive. The full proposal needs to be made public.

1. How does the Miracle League proposal align with the principles and mission of the ADA regarding Inclusive Recreation Services and the requirement that all citizens be given the opportunity to recreate in the "most integrated setting"? The plan described in the newspaper appears to segregate rather than integrate.
2. Are the current Ames parks NOT accessible? If not, they should be.
3. Have the costs of improving current parks/playgrounds so that they become more accessible and desirable been compared to the projected costs of the proposed playground/park?
4. Have individuals who would participate and benefit from the planned playground been asked if they would prefer a separate recreational area to a more inclusive one?

Somehow it seems more welcoming and inclusive to address the needs of our disabled citizens by ensuring that the equipment and facilities of our current parks and playgrounds are accessible to them.

Before any final votes are taken, I do hope the proposal is communicated widely to all involved and thoroughly vetted.

Thank you for your attention,

Zora Zimmerman

First, I want to thank you for your staff's quick response to my dog park concerns. I really appreciate it.

Second, I want to compliment you and your staff for new volleyball courts at Inis Grove Park. I walk my parks almost every day at the park, so it is important to me. I must admit that I was skeptical at first how the volleyball courts would "fit in" and I had concerns about the drainage issues there. However, in watching the construction progress and now, after visiting the park the past two nights and seeing the courts in use, I have to tell you how well they "fit in" and apparently, they are getting very heavy use already. It's like a "bowl" surrounded by trees, which insulates the courts from the surrounding park area and the residential area to the south. It's a great use of an underutilized area of one of our city parks.

Now my concern. I support wholeheartedly a Miracle Field and accessible playground for Ames, but the Inis Grove site causes me great concern because: there is inadequate parking (it's already a problem when disc football players clog 24th St.); distance away from restrooms (I assume the ones off Duff Ave. will be the ones made accessible); and lighting. If the new volleyball court lights are an indication of the intensity needed (and I assume so, since adequate lighting is absolutely necessary for people with mobility disabilities), then that will seriously impact people living across from the park along 24th St. and Duff Ave. I am not affected, as I live a few blocks away, but I am sympathetic to their concerns about lighting, parking and traffic.

Thank you for listening to my concerns. I know your are in a difficult position, having to balance the recreational needs of all of our citizens, and the living condition concerns of all of our residents. I wish you well in the upcoming discussion and development of a solution that benefits all.

John Anderson

I want to state my support for the Miracle Field to be placed at Inis Grove.

I believe that Inis Grove is an excellent site as it is centrally located in Ames and that the families who would potentially use the miracle field can also experience the many other activities that Inis Grove has to offer.

The field will only take up a small portion of the available area leaving large areas of green space that can be used for pick-up type activities and family get togethers. I am sure that the additional traffic will not negatively impact the surrounding areas and in particular the houses that are close to the park.

I am a father of a special needs daughter and know that she will thrive at such a facility. At the same time it will be great to interact with other community residents within the other regular activities. Please do not shove the miracle field in to some off the beaten path location because a few neighbors are unhappy about the perceived extra noise or children running around. This is a park where hopefully citizens are enjoying the many activities the park offers. I think that it will be great to hear laughter and enjoyment and to see children with special needs and disabilities engaged in activity.

Thanks for your time.

Gary Eyles

3017 Cottontail Lane, Ames 50014

Hi Everyone-

A quick e-mail to all of you in support of the development of the Miracle Field at Inis Grove Park. I have had the opportunity to attend baseball games at the Miracle Field in Des Moines. My son attended Gilbert High School and his baseball team made annual visits to the Miracle Field in Des Moines to help the kids play baseball. It was a hi-light of their year, so rewarding, and most importantly, was so much fun for all involved. It would be wonderful to bring this to Ames for more kids and adults to participate and volunteer. I think Inis Grove Park would be a great place to build as there is plenty of space and it's a great location with many park amenities already available. It would certainly allow for the space needed for the field but still leave plenty of space for the regular activities at the park.

I know there are many things to consider with this project but I believe this would be a wonderful addition to Ames. I support the field and the location at Inis Grove Park.

Thank you for your work on this project and so many others.

Cathy Adams

To whom it may concern:

I am writing today in regards to the Miracle Park and Field proposed to be built in Inis Grove Park. I understand that there is opposition regarding this proposition. I am writing in support of the park and would like a chance to explain why.

As an employee of Mainstream Living I understand the strong desire for the individuals we serve to feel included in their communities. This proposed park would be a wonderful opportunity for our members with disabilities, giving everyone a chance to feel included and to have fun. Several of the members we serve are confined to a wheelchair and this new park would allow them to play on a playground, as well as giving them a chance to play a sport they would otherwise be unable to participate in.

I am personally disappointed to live in a community where anyone could say no to an amazing opportunity such as this. It would not only be a great chance for those with disabilities within Ames but would draw in folks from other communities, potentially increasing profit for businesses in the area as well. I think this would also help draw positive attention to Ames, to show others in our state that this is a city in which progressive, forward thinking ideas are met with a positive response, that we live in a place where all are included and where everyone can be treated with equal respect.

Please consider my opinion and know that I am speaking with the best interest of our community in mind. I feel very strongly that this would be a positive addition to our city and hope that everyone will get the chance they deserve to be treated equally.

Thank you for your time and consideration,

Rachel Schrock

Rachel Schrock | Activity Coordinator

[Mainstream Living, Inc.](#) | 333 SW 9th St. Suite C, Des Moines, IA 50309

Phone: 515-243-8115 | Fax: 515-243-5017

Take this opportunity to improve the program and increase accessibility for our community. If you're worried about green spaces, stop sprawl! Jessica Herold

To whom it may concern:

We are writing in regards to the proposed Miracle Park and Field that would be built at Inis Grove Park. We are reaching out as members and staff of The Center at Mainstream Living and have a few thoughts regarding this current issue. The following comments have been made by members of our day-hab program.

Sharon would like to have a place where all of our friends can play together.

Jesica is in favor of the park so that everyone can feel equal. It would be reassuring to her that we play on safe equipment.

Tedi wants to make sure that our friends in wheelchairs have fun too.

Stan does not think that there are enough parks for all of our members to use.

Karen wants to find someplace our friends in the Sensory program can enjoy using.

Caleb would like for there to be equipment everyone can use.

Chris would like to have another option for places to have picnics and hopes it would allow us to listen to music together. Chris thinks it will allow people who are blind to be able to play in a safe environment. He also hopes it would allow a safe place for all our friends to hang out.

Doug would feel upset if the playground did not get built.

Our group is collectively in favor of this park and hope this is looked at with genuine consideration. As a group who frequent the parks in Ames regularly, we would feel that much more included as members of the community with a park such as the proposed Miracle Park. Everyone deserves a safe and inclusive environment, one in which they feel accepted and welcomed by their community. Please consider our thoughts and comments when voting on this park, we appreciate your time and consideration.

Sincerely,
Friends in Session One at The Center

SHARON
KARON
Alan
Sam
Duane
MICHAEL
DOUG
JESICA
KEVIN
TEDI
CHRIS
DAVID
CALEB
FELIX

To Whom This May Concern:

We are members at Mainstream Living's "The Center." We have currently been going to the Miracle League Park in Ankeny. The Miracle League Park allows everyone, no matter their ability, to be able to be active, healthy, be part of a team, and be safe. Another benefit of this park is the Miracle League Field. The miracle league field allows us to be involved in many different sports like baseball, kickball and many others. Having this field would allow us to be involved in sports that we would regularly not be able to do on a normal field. Most of us have been an Ames resident for many years. Having a Miracle League Park would not only benefit us but surround counties as well. We are excited about the idea of a Miracle League Park here in Ames. We don't fully understand why members of the community would not want to support a project as beneficial as this one. At this time we would like to express our feelings in hopes of how much a park like this would benefit us:

Morris: "I want a miracle league park so my friends can go on it with me."

MORRIS

Amber: "I want my friends to have fun like I do. People that are in wheel chairs can have their freedom."

Amber

Bre: "I want to be able to try different sports. It would allow me to be able to play with my niece and nephew at the park."

Bre

Todd: "It would allow me to meet other people in the community. I would also get to be able to play kickball and be part of a team."

Todd A

Megan: "It would be safer for me to play with my friends."

Megan O.

Dan: "I can play softball and soccer. I can bring my friends and family out and be able to play with my nephews. I can be safe when I play."

DAN B

Laura: "I can walk around with my friends and be able to try out baseball."

Laura 19 91

Caitlyn: "I can be able to play with friends."

CW

Meghann: "It allows me to socialize with different people from the community."

Meghann S.

Ray: "Being unsteady it allows me to be in a safer environment."

RAYH

Site Visitor Name: Galen Wilke
Site Visitor Email: galenwilke@gmail.com

Thank you for taking the correct and courageous decision that you did on the miracle league location. I attended the first meeting in July and subsequently visited every single park mentioned. Inis Grove is the only solution. Being on a dead end street it is also the safest despite what the neighbors claim. I started very open minded but ended with the conclusion that the neighborhood association is simply greedy, putting the wants of a few over the needs of many.

October 2, 2016

Dear members of the Parks and Recreation Commission.

We, the members of the Friends of Inis Grove Friends of the Park Committee would like to follow-up and ask you to make some decisions that are important in the Miracle League Ball field and Playground design and process. We know it was not an easy decision as almost all of you commented that it was the most difficult decision you have had to make. In this context we would like to have you make the following decisions:

1. We appreciate the motion that this comes back to the P&R before a design is submitted to City Council. This must be conducive to park standards and quality design. ...And not be garish. We ask that at least two members of the Inis Grove Friends be a part of the design and concept committee. We also ask that any meetings regarding design, construction, operation or maintenance topics be open meetings or at least have minutes that are public documents and publicly shared on the city's website

2. There will be no lights on the fields. Several of you indicated that you had doubts about lighting. All miracle league games are played on Saturdays during the day. Other activities scheduled for the ball field would have to be concluded before dusk as well. Also the lights would be on the South end of the park. We can already see the volleyball lights every night that they are playing. Those of us on 24th would have to look at them every night and we don't think that is being fair for a community park in a residential neighborhood.

3. Advertising signs will not be posted on the fence around the field. Supporters can be recognized with a plaque or an appropriate signing near the entrance to the park

4. No sound system. If a sound system is necessary for the actual Miracle League games held on Saturday, we feel strongly that any use be limited to Saturday Miracle League games only. We are aware that the PA sound system used in Ankeny can be heard several blocks away, so please imagine living directly across the street without any physical barriers to mute the sound system.

We ask you to vote on these measures so that there is clear direction to the concept and design committee. Please put it on the Parks and Rec Agenda for October

On another matter some have indicated a bio swall is not an option for storm water detention (SWD). We are concerned that without proper planning and investigation this project could be substantial in cost and ultimately ruining the most beautiful fall scene in Ames. (we hope you will drive by in the next few weeks) It is apparent with the construction of the sand volley ball courts and the upcoming traffic issues regarding park entrance a significant number of trees will be lost even before SWD is considered.

The city needs to emphasize the need for the city to both protect our natural park environments, including our trees (we are a designated Tree City USA!!!), AND provide space for a built recreational infrastructure that is on flat land not located in a flood plain. The first should be easy if we pursue the second. Nearly 600 residents signed a petition to ask for a different location, including many who do not live in the "Inis Grove Neighborhood". So, Ames residents clearly want to have the conversation. And, we don't know what is possible until; we seriously try! They are very concerned that their voices have not been recognized in this process.

While this progresses thru the Ames system at least give us the satisfaction that you are listening to us by passing the four motions to make them a matter of record.

Thank you.

Larry Ebbers for the friends of Inis Grove Park

Dear Council members,

Please read the story regarding the replacement of the Miracle League Ball field after 11 years. I think this has to be considered because it will be city property once the ball field is built. While Keith is suggesting P&R can take care of the maintenance I think there are some long term issues. You may want to consider doing the playground only and do some more research on the ball field. Also when you look at participation numbers at Ankeny you may want to reconsider doing the ball field. Thank you for your consideration.

Subject: Miracle League seeks funds to replace field

<http://www.desmoinesregister.com/story/news/local/2016/05/27/miracle-league-seeks-funds-replace-field/84976022/>

Larry Ebbers
515-290-9854
bebbers@isunet.net

ATTACHMENT E

LIST OF LOCATION OPTIONS AND WHY SITE IS NO LONGER BEING CONSIDERED

LOCATION

WHY NOT BEING CONSIDERED

Area West of Dog Park	Will need the most development; very congested with Hunziker Youth Sports Complex; not on CyRide route, poor access.
Baltimore Avenue Property	Is zoned commercial; land acquisition costs.
Brookside Park	In the flood plain.
Edwards School (old school)	Poor access; land may not be available; not on CyRide route.
Emma McCarthy Lee Park	Difficult access to lower park area; not on CyRide route; leaves little green space; not adequate parking.
Farmland on East 13 th Street	In the flood plain.
Furman Aquatic Center	In the flood plain; designated storm water detention; protected wetlands.
Helen Daley Park	Additional parking needed; not easy to get to; loses 40% of green space.
Hunziker Youth Sports Complex (Leased to Youth Sports Complex Board)	In the flood plain.
Inis Grove Park Option B (Open space sw of Shagbark Shelter)	May need additional parking in east lot; may not be large enough; security concerns.
Lloyd Kurtz Park	Need parking; leaves no green space.
Middle School	Significant grading or fill needed; may not be large enough space.
Moore Memorial Park	Not enough flat space; hard to get to; not on CyRide route.
North River Valley Park	In the flood plain.
Story County Park in Research Park	Is a conservation area.

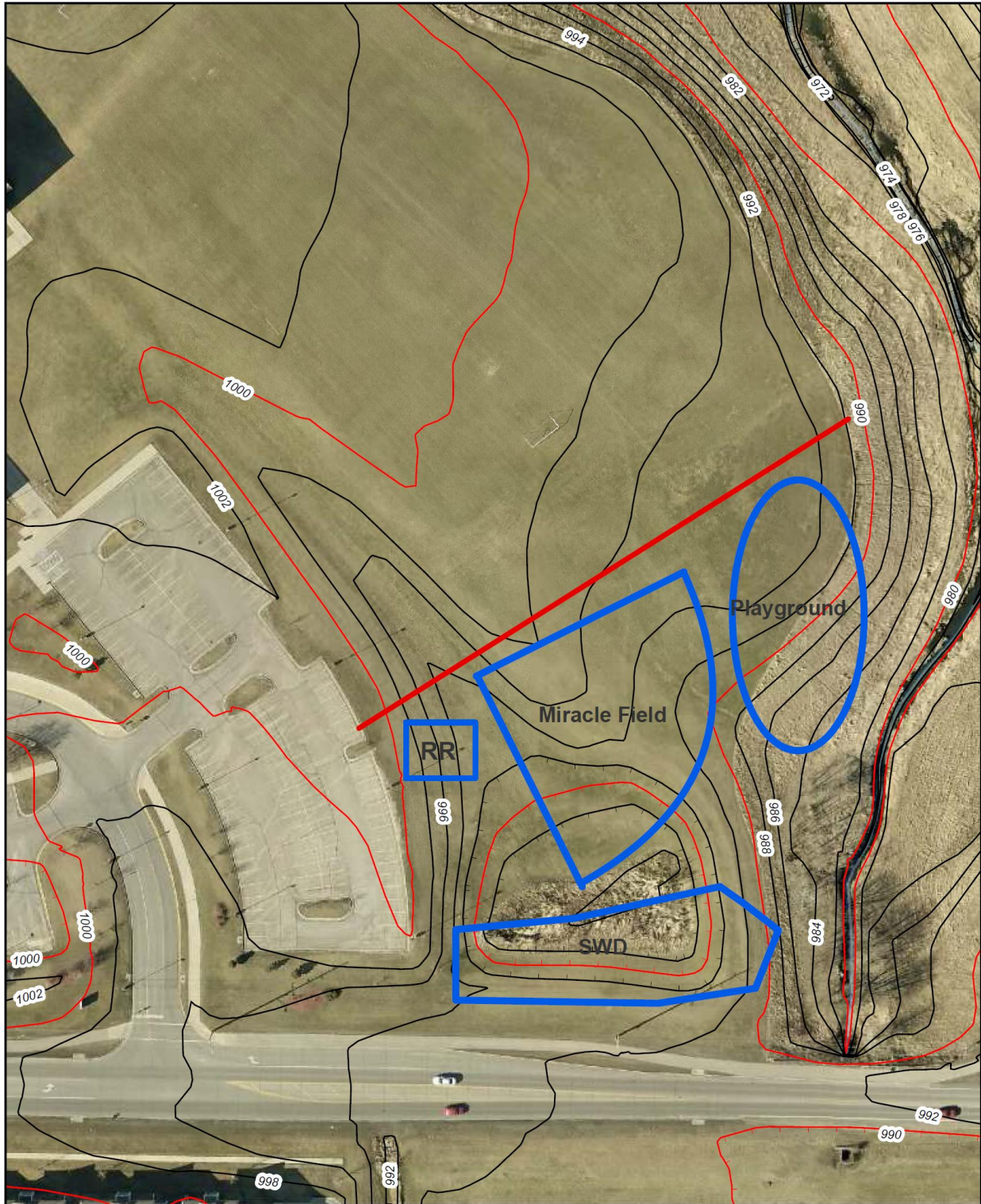
ATTACHMENT F
INIS GROVE OPTION 1



ATTACHMENT G
INIS GROVE OPTION 3

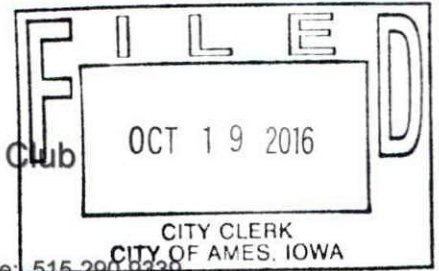


ATTACHMENT H
AMES MIDDLE SCHOOL SITE





Ames Golden K Kiwanis Club



3925 Hoover Ave., Ames, Iowa 50010, telephone: 515-290-8330
e-mail: l.trede@mchsi.com website: www.amesgoldenk.org

October 18, 2016

Mayor & Ames City Council
PO Box 811
515 Clark Ave.
Ames, Iowa 50010

Dear Mayor/City Council:

This letter is written in support of the Miracle League Field and All-Inclusive Playground being proposed for City of Ames to be located at Inis Grove Park. On September 8, 2016, the park concept and location was discussed by the Board of Directors of the Ames Golden K Kiwanis Club and motion of support for the concept and location was passed by the Board.

Kiwanis International and local Kiwanis clubs in Ames have as their mission, "to improve the world, one child and one community at a time." The concept of an all-inclusive playground and Miracle Field being proposed in Ames complements our mission very well. Kiwanis clubs in the Des Moines and Ankeny areas were involved with similar projects already established in those communities.

We feel that there are several advantages of the Inis Grove location. First, Inis Grove is located outside of a floodplain which is crucial due to the surfaces used for the Miracle Field. Second, there is ample land available to accommodate the field, parking with infrastructure that will allow individuals with limited mobility to park or be dropped off at the facility, and ample land that does not interfere with other park activities and green space for enjoyment by all park users. Third, Inis Grove location is easily accessible and centrally located for users who may not be familiar with Ames and may come to Ames to enjoy the park or participate in sporting events held at the field. Lastly, the city of Ames has already planned new ADA compliant restrooms to be constructed at Inis Grove site which will decrease the overall project cost of the Miracle League Field.

In summary, Inis Grove is generally considered to be a community park and not just a neighborhood park and is one of the city's most popular parks. Constructing the Miracle Field in concert with an All-inclusive playground will benefit the city, Story County, and the entire region.

We hope the Council will approve the project and its proposed location.

Sincerely

Carlton 'Pete' Peterson
Carlton "Pete" Peterson
President

Bob Sperry
Robert "Bob" Sperry
President-Elect

"dedicated to improving the world one child and one community at a time"