

COUNCIL ACTION FORM

SUBJECT: EMERGENCY STORM REPAIR FOR TRAFFIC SIGNAL (SOUTH DUFF AVENUE AND AIRPORT ROAD)

BACKGROUND:

On June 7, 2015, the City experienced severe weather resulting in damage to City facilities at the intersection of South Duff Avenue and Airport Road. At approximately 3:00 AM, a small tornado caused damage to the windows and doors at Fire Station 3, and twisted the northbound and eastbound traffic signal poles until they touched the ground (see Attachment 1).

Public Works and Police staff responded to the damage so that the hazard to the public could be removed and a temporary traffic signal be placed. After the intersection was restored back to a safe and functioning state, the City's Ames Risk Manager worked with City departments to generate a damage estimate and insurance claim.

Because of the urgent nature of the emergency recovery effort, staff drafted engineering plans and solicited quotes for the traffic signal replacement portion of the storm repairs, rather than going out for traditional bids. That action, while unusual, is authorized under the City's adopted Purchasing Policies and Procedures. To complete this emergency repair process, City Council is now asked to accept completion of the work.

The following quotes were received by staff on September 25, 2015:

Company	Quote
Iowa Signal, Inc.	\$ 55,619.67
Voltmer, Inc.	\$ 72,190.00
Baker Electric, Inc.	\$ 75,696.00

Iowa Signal, Inc. of Grimes, Iowa, was selected as the low quote for the emergency repairs. Work for the traffic signal was deemed complete in accordance with City standards on February 25, 2016. In addition to the traffic signal replacement expense of \$55,619.67, other expenses included the temporary signal at \$7,000 and interdepartmental labor at \$3,919.36. This brings the **total cost for the traffic signal portion of the storm damage to \$66,539.36.**

Since the cumulative storm damage was submitted as an insurance claim, the deductible was divided between the signal work and the fire station repairs. The City's property damage deductible is \$25,000 per claim. Therefore, a **pro-rated deductible of \$21,399.60** will be paid from the unobligated balance of Road Use Sales Tax fund, leaving **\$45,139.76 to be received back from insurance.**

ALTERNATIVES:

1. Accept the emergency storm repair of the traffic signal at the South Duff Avenue and Airport Road intersection as completed by Iowa Signal of Grimes, Iowa, in the amount of \$55,619.67.
2. Direct staff to pursue modifications to the project.

MANAGER'S RECOMMENDED ACTIONS:

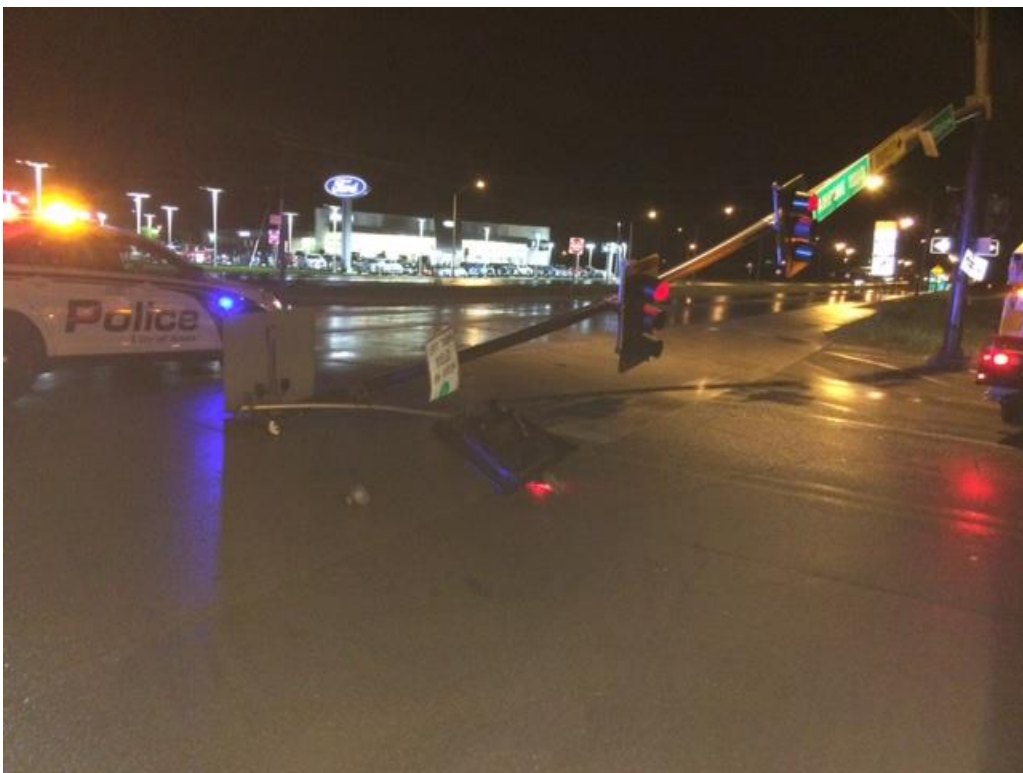
Council acceptance of these repairs will allow staff to move forward in closing out the emergency repair and insurance claim processes, and will authorize payment to the contractor for the emergency repairs to this traffic signal.

Therefore, it is the recommendation of the City Manager that the City Council adopt Alternative No. 1, as shown above.

Attachment 1



Eastbound Pole



Northbound Pole