

**AMES AREA METROPOLITAN PLANNING ORGANIZATION (AAMPO)  
TRANSPORTATION POLICY COMMITTEE ACTION FORM**

**SUBJECT: FINAL FY 2015-2018 TRANSPORTATION IMPROVEMENT PROGRAM (TIP)**

**BACKGROUND:**

In order to receive funds for transportation improvement projects, the projects must be part of the approved Iowa Department of Transportation's (Iowa DOT) Statewide Transportation Improvement Plan (STIP). The initial step in this process is for AAMPO to develop and approve a TIP for the MPO region. Regulations require the TIP to include transportation projects for four years.

The attached plan provides for projects consisting of street improvements, CyRide improvements, and trail projects. A number of projects were evaluated as this plan was developed. The FY 2015 street project will be the pavement rehabilitation of 24<sup>th</sup> Street from the UPRR tracks to Northwestern Avenue and Bloomington Road from Eisenhower Avenue west 500 feet. Funds are also programmed for the Long Range Transportation Plan update to the horizon year of 2040. The transportation alternative program funds will be used for trail extension along S. Duff Avenue from Squaw Creek to S. 5<sup>th</sup> Street and the Skunk River Trail Extension from East Lincoln Way to South River Valley Park, which is scheduled to be constructed as the FY 2015 trail project. However, it should be noted that completion of this segment will be subject to receiving access easements from the affected property owners.

**A public input session was held on May 1, 2014, to provide an opportunity for the public to discuss the TIP with staff and provide comments. No revisions were requested by the public. Comments were also received and addressed from the Iowa DOT, Federal Highway Administration, and Federal Transit Administration. The final approved TIP document is to be submitted to the Iowa DOT by July 15, 2015. The FY 2015-2018 TIP is attached.**

**ALTERNATIVES:**

1. Approve the final FY 2015–2018 TIP for submission to the Iowa DOT.
2. Approve the final FY 2015–2018 TIP with Policy Committee modifications for submission to the Iowa DOT.

**ADMINISTRATOR'S RECOMMENDATION:**

These projects correlate to the City of Ames 2014-19 Capital Improvement Plan, and the AAMPO Technical Committee has unanimously recommended approval of this plan.

Therefore, it is recommended by the Administrator that the Transportation Policy Committee adopt Alternative No. 1, thereby approving the final FY 2015–2018 TIP for submission to the Iowa DOT.



# **TRANSPORTATION IMPROVEMENT PROGRAM**

**FY 2015 – 2018**

**FINAL**

**JULY 8, 2014**

"The preparation of this report has been financed in part through grant[s] from the Federal Highway Administration and Federal Transit Administration, U.S. Department of Transportation, under the State Planning and Research Program, Section 505 [or Metropolitan Planning Program, Section 104(f)] of Title 23, U.S. Code. The contents of this report do not necessarily reflect the official views or policy of the U.S. Department of Transportation.

[This Page Left Blank]

# Table of Contents

Federal Highway Administration Section .....	2
Project Selection .....	2
FY 2014 Project Status Report .....	3
Fiscal Constraint .....	4
Financial Constraint Summary Tables .....	4
Network Operations and Maintenance .....	5
Public Participation Process .....	5
Title VI Compliance .....	5
Self Certification .....	5
Revising the TIP .....	5
Administrative Modifications .....	6
Amendments .....	6
Federal Transit Administration Section .....	6
FY 2015 TIP FTA Project Justification .....	6
Appendix A: FY 2015 – 18 TIP TPMS Printouts .....	9
Appendix B: FY 2015 – 18 TIP Roadway Project Information .....	10
Appendix C: AAMPO Self Certification .....	12
Appendix D: Transportation Policy Committee Meeting Minutes .....	22

## ***Federal Highway Administration Section***

### **Project Selection**

The Ames Area Metropolitan Planning Organization (AAMPO) uses an informal project selection criteria system as a means of prioritizing submitted projects. All projects submitted to the AAMPO for inclusion in the Transportation Improvement Program (TIP) are reviewed by staff and the Transportation Technical Committee (TTC) and Transportation Policy Committee (TPC). Projects are programmed in the TIP by approval of the TPC based on the recommendation of the TTC and staff.

Projects are prioritized based on public input, need and financial availability. Factors identified in the Long Range Transportation Plan (LRTP) will be used as tools to help determine those projects selected and their respective priority. In addition to the LRTP tools, highway capacity improvement projects are selected using Level of Service criteria; rehabilitation and reconstruction projects are selected based upon pavement condition index and field review. A STP application form shall be submitted along with all STP projects to be considered to receive federal-aid funding. This form can be requested from the AAMPO staff or downloaded from the AAMPO website.

Transportation Alternative projects consist mainly of open space trails that have been developed during the public involvement process for the Long Range Transportation Plan (LRTP) update. Trail segments shown in the plan are sized proportionately based upon estimated construction costs. A TAP application form shall be submitted along with all TAP projects to be considered to receive federal-aid funding. Submitted projects are then ranked with the following criterion: connectivity with existing facilities, cost in relation to public benefit, enhancement to existing transportation system, and identified in the long range transportation plan. The ranked list is then discussed and may be revised during the TIP development process. The project application form can be requested from the AAMPO staff or downloaded from the AAMPO website.

Bridge projects consist of necessary repairs recommended by the biennial Iowa Department of Transportation (IDOT) bridge inspections. The IDOT requires these inspections for bridges within the local jurisdictions of the AAMPO. A Candidate List is created by the IDOT Office of Systems Planning based on priority points ranking. Local agencies and the AAMPO work with the IDOT on programming necessary bridge projects based on priority and available funding.

The Transit Board selects operating projects for CyRide as identified in the approved Passenger Transportation Plan (PTP), which serves as a needs assessment for all regional human and health service agencies. The Transit Board also approves matching funds for capital projects based upon identified route expansions.

All projects are consistent with the approved 2035 Long Range Transportation Plan adopted on Oct. 12, 2010.

AAMPO FY 2015 – 18 Transportation Improvement Program

**FY 2014 Project Status Report**

<i>TPMS #</i>	<i>Project Number</i>	<i>Location</i>	<i>Type of Work</i>	<i>Status</i>	<i>Total Project Cost</i>	<i>Total Federal Aid</i>	<i>Sponsor</i>
14983	STP-E-0155(SE16th)-70-85	In the City of Ames, Skunk River Trail: From SE 16th Street to East Lincoln Way	Ped/Bike Grade & Pave	FHWA Approved - Roll over Funding	\$ 521,000	\$ 160,000	City of Ames
19961	STP-U-0155(S 3RD / S 4TH)-70-85	In the City of Ames, S 3RD ST / S 4TH ST: From Squaw Creek to South Duff Avenue	Pavement Rehab	FHWA Approved - Roll over Funding	\$ 1,867,000	\$ 1,292,000	City of Ames
21260	STP-E-0155(SE16TH)-8V-85	In the City of Ames, Skunk River Trail: From SE 16th Street to East Lincoln Way	Ped/Bike Structures, Ped/Bike Miscellaneous	FHWA Approved - Roll over Funding	\$ 835,000	\$ 160,000	City of Ames
17023	STP-U-0155(ELW)-70-85	In the City of Ames, E LINCOLN WAY: From South Duff Avenue to and including South Skunk River Bridge	Pavement Rehab, Bridge Rehabilitation	FHWA Approved - Roll over Funding	\$ 2,130,000	\$ 1,060,000	City of Ames
1948	STP-E-0155(S DUFF)-8V-85	In the City of Ames, S DUFF AVE: From Squaw Creek to South 5th Street	Ped/Bike Grade & Pave	FHWA Approved - Roll over Funding	\$ 100,000	\$ 70,000	City of Ames
19248	STP-U-0155()-70-85	24TH ST AND BLOOMINGTON RD: 24th St. (UPRR tracks to Northwestern Ave.) and Bloomington Rd. (Eisenhower Ave. to west 500 ft.)	Pavement Rehab	FHWA Approved - Roll over Funding	\$ 1,832,000	\$ 1,292,000	City of Ames
22052	BRFN-030()-39-85	US30: US 69/BIKE PATH IN AMES (EB)	Bridge Deck Overlay	FHWA Approved - Roll over Funding	\$ 456,000	\$ -	IDOT Dist. 1
22016	IM-035()-13-85	I-35: US 30 INTERCHANGE IN AMES	Bridge New, Grading, Right of Way	FHWA Approved - Roll over Funding	\$ 9,600,000	\$ 8,550,000	IDOT Dist. 1
14980	STP-E-0155(ADA)-8V-85	In the City of Ames, Skunk River Trail: From Bloomington Road to Ada Hayden Park	Ped/Bike Grade & Pave	FHWA Approved - 2014 Construction	\$ 441,000	\$ 250,000	City of Ames
14982	STP-E-0155(682)-8V-85	In the City of Ames, Skunk River Trail: From East Lincoln Way to S. River Valley Park	Ped/Bike Grade & Pave	FHWA Approved - Roll over Funding	\$ 790,000	\$ 360,000	City of Ames
15628	STP-E-C085(100)-8V-85	Gilbert to Ames Trail: Trail connection from Gilbert, Iowa to Ames, Iowa	Ped/Bike ROW	FHWA Approved - Roll over Funding	\$ 983,000	\$ 62,000	Story CCB
21264	BROS-C085(116)-5F-85	North Dakota Ave: Over Onion Creek	Bridge Replacement	Authorized - 2014 Construction	\$ 350,000	\$ 280,000	Story CRD
21261	STP-U-0155(681)-70-85	In the City of Ames, SHELDON AVENUE: From Lincoln Way to Hyland Avenue	Pavement Rehab	Authorized - 2014 Construction	\$ 1,480,000	\$ 1,060,000	City of Ames
16032	STP-U-0155(Grand3)-70-85	GRAND AVE: S Grand Ave: 0.1 miles north of S. 16th Street to Squaw Creek Dr / S 5th St: S Grand Ave to S Duff Ave / S 16th & S Duff Ave Intersection	Grade and Pave, Bridge New	FHWA Approved - 2014 NEPA Clearance	\$ 11,546,000	\$ 2,096,000	City of Ames
16103	RGPL-PA22(RTP)-ST-85	Ames MPO Planning: STP Funds for Transportation Planning	Trans Planning	Authorized - LRTP Update Initiated	\$ 400,000	\$ 320,000	AAMPO

AAMPO FY 2015 – 18 Transportation Improvement Program

## Fiscal Constraint

The AAMPO FY 2015 programming targets are \$1,539,075 for STP, \$86,304 for TAP, and \$65,713 for TAP Flex. The project costs shown in the TIP are in year of expenditure dollars. This is accomplished by developing an estimate of costs in the current bidding environment and then applying an inflation factor of 4% per year. The Ames City Council has programmed these projects in the City of Ames 2014-2019 CIP for the local funding allocation. These funds are generated from the City's annual Road Use Tax Fund (RUTF) distribution, Local Option Sales Tax, and General Obligation (GO) Bonds. The transit program does not have targets, and thus the requests involve significant costs in the anticipation of maximizing the amounts received.

## Financial Constraint Summary Tables

Federal Aid Program	2015		2016		2017		2018	
	Total Cost	Federal Aid	Total Cost	Federal Aid	Total Cost	Federal Aid	Total Cost	Federal Aid
Surface Transportation Program (STP)	\$2,128,000	\$1,529,000	\$3,130,000	\$1,060,000	\$6,517,000	\$1,992,000	\$6,500,000	\$1,300,000
Highway Bridge Replacement (STP-HBP)	\$2,425,000	\$1,000,000	\$0	\$0	\$0	\$0	\$0	\$0
Transportation Alternatives Program (TAP)	\$1,873,000	\$492,000	\$835,000	\$160,000	\$521,000	\$160,000	\$586,000	\$140,000
National Highway Performance Program (NHPP)	\$0	\$0	\$100,000	\$0	\$9,500,000	\$8,550,000	\$3,864,000	\$3,478,000
Primary Road Funds (PRF)	\$456,000	\$0	\$0	\$0	\$0	\$0	\$0	\$0

	2015	2016	2017	2018
Unobligated Balance (Carryover)	\$3,430,544	\$3,506,332	\$4,051,332	\$3,664,332
Region STP Target	\$1,539,075	\$1,539,000	\$1,539,000	\$1,539,000
Region TAP Flex Target	\$65,713	\$66,000	\$66,000	\$66,000
<b>Subtotal</b>	<b>\$5,035,332</b>	<b>\$5,111,332</b>	<b>\$5,656,332</b>	<b>\$5,269,332</b>
Transfer to TAP (STP and Flex)	\$0	\$0	\$0	\$3,000
Programmed STP Funds	\$1,529,000	\$1,060,000	\$1,992,000	\$1,300,000
<b>Balance</b>	<b>\$3,506,332</b>	<b>\$4,051,332</b>	<b>\$3,664,332</b>	<b>\$3,966,332</b>

	2015	2016	2017	2018
Unobligated Balance (Carryover)	\$543,410	\$199,714	\$125,714	\$51,714
Region TAP Target	\$86,304	\$86,000	\$86,000	\$86,000
STP and Flex Transfer Credit	\$0	\$0	\$0	\$3,000
<b>Subtotal</b>	<b>\$629,714</b>	<b>\$285,714</b>	<b>\$211,714</b>	<b>\$140,714</b>
Programmed TAP Funds	\$430,000	\$160,000	\$160,000	\$140,000
<b>Balance</b>	<b>\$199,714</b>	<b>\$125,714</b>	<b>\$51,714</b>	<b>\$714</b>

	2013	2014	2015	2016	2017	2018
City of Ames Total Operations	\$447,674	\$465,581	\$484,204	\$503,572	\$523,715	\$544,664
City of Ames Total Maintenance	\$888,723	\$924,272	\$961,243	\$999,693	\$1,039,680	\$1,081,267
City of Gilbert Total Operations	\$1,169	\$1,216	\$1,264	\$1,315	\$1,368	\$1,422
City of Gilbert Total Maintenance	\$14,584	\$15,167	\$15,774	\$16,405	\$17,061	\$17,744
<b>Total O&amp;M</b>	<b>\$1,352,150</b>	<b>\$1,406,236</b>	<b>\$1,462,485</b>	<b>\$1,520,985</b>	<b>\$1,581,824</b>	<b>\$1,645,097</b>

	2013	2014	2015	2016	2017	2018
City of Ames Total RUTF Receipts	\$5,646,836	\$5,872,709	\$6,107,618	\$6,351,923	\$6,605,999	\$6,870,239
City of Ames Total Other Road Monies Receipts	\$4,031,928	\$4,193,205	\$4,360,933	\$4,535,371	\$4,716,785	\$4,905,457
City of Ames Total Receipts Service Debt	\$21,215,250	\$22,063,860	\$22,946,414	\$23,864,271	\$24,818,842	\$25,811,595
City of Gilbert Total RUTF Receipts	\$103,619	\$107,764	\$112,074	\$116,557	\$121,220	\$126,068
City of Gilbert Total Other Road Monies Receipts	\$16,517	\$17,178	\$17,865	\$18,579	\$19,323	\$20,095
City of Gilbert Total Receipts Service Debt	\$0	\$0	\$0	\$0	\$0	\$0

## **Network Operations and Maintenance**

The capital investment and other measures necessary to preserve the existing transportation system, as well as operations, maintenance, modernization, and rehabilitation of existing and future transportation facilities are annually reviewed and programmed. Preservation, operating, and maintenance costs are included as a priority for funding. Maintenance and rehabilitation projects are also included in the AAMPO LRTP. In addition to STP funding, the City of Ames utilizes RUTF, Local Option Sales Tax, and General Obligation funding for system preservation projects. A program is also included in the City of Ames 2014-2019 CIP to address shared use path maintenance. The LRTP and Land Use Policy Plan (LUPP) both use an intersection efficiency standard of Level of Service (LOS) C.

## **Public Participation Process**

A notice advising the public about the draft TIP and Transportation Planning Work Program (TPWP) reviewed by the AAMPO Technical Committee will be mailed to 43 neighborhood organization chairpersons, representatives of the Ames Main Street District, Campustown Action Association, NAACP, Friends of Central Iowa Biking, International Student Council at Iowa State University (ISU), League of Women Voters, and others in accordance with our approved Public Participation Plan (PPP). In addition, as previously noted, projects are available for public review and comment through the City of Ames CIP process. A public input session will be held on May 1<sup>st</sup>, 2014 to discuss the TIP and receive comments.

## **Title VI Compliance**

The Ames Area MPO adheres to the City of Ames's Title VI of the Civil Rights Act of 1964 Compliance Plan. The AAMPO carries out its transportation planning processes without regard to race, color, or national origin. The Compliance Plan provides information on the Ames Area MPO Title VI compliance policies, complaint procedures, and a form to initiate the complaint process for use by members of the public. For more information or to file a complaint or concern, please contact the AAMPO Administrator at the City of Ames Public Works Administration Office at 515-239-5160.

## **Self Certification**

The AAMPO Policy Committee certified that transportation planning activities in the Ames metropolitan area are being carried out in accordance with governing Federal regulations, policies and procedures. This certification was at the meeting on March 25, 2014. A copy of the document is attached in Appendix C.

## **Revising the TIP**

Often after development and subsequent adoption of the TIP, changes may need to be made to the list of programmed projects. Examples of changes might be adding or deleting projects, moving a project between years in the TIP, adjusting project cost, or changing the vehicle numbers of transit vehicles.



A major requirement of a project receiving Federal transportation funds is for the project to be included in the TIP and Statewide Transportation Improvement Program. Once a project has received Federal Authorization for construction it does not need to be included in the TIP. This is one of two major reasons for adding or deleting a project from the TIP. The other major reason for adding a project is the awarding of a grant or earmark for a project, which can happen throughout the year.

Changes to the TIP are classified as either “administrative modifications” or “amendments”.

### Administrative Modifications

Administrative Modifications are minor changes involving the following:

- **Project Cost** – changes that do not increase federal-aid by more than 30% or do not increase total federal-aid by more than \$2 million from the original amount.
- **Schedule Changes** – changes in schedules to projects included in the first four years of the TIP
- **Funding Source** – changes to funding from one source to another
- **Scope Changes** – all changes to the project’s scope

### Amendments

Amendments are major changes involving the following:

- **Project Cost** – changes that increase federal-aid by more than 30% or increase total federal-aid by more than \$2 million from the original amount.
- **Schedule Changes** – projects added or deleted from the TIP.
- **Funding Source** – projects receiving additional federal funding sources.
- **Fiscal Constraint** – changes that result in the TIP no longer being fiscally constrained.
- **Scope Changes** – changing the project termini, the amount of through traffic lanes, type of work from an overlay to reconstruction, or a change to include widening of the roadway.

Administrative modifications and amendments are subject to different AAMPO Policy Committee and public review procedures. Administrative modifications are processed internally and are shared with the Policy Committee and the public as informational items. Amendments are presented to the Policy Committee and a public comment period is opened, which lasts until the next Policy Committee meeting (the Policy Committee meets on an as needed basis, giving a 3-4 week public comment period). Public comments are shared at this meeting with the Policy Committee and action is taken to approve the amendment.

## ***Federal Transit Administration Section***

### **FY 2015 TIP FTA Project Justification**

The following transit projects identified within the draft FY2015-2018 TIP were included within the 2015 Passenger Transportation Plan (PTP) Update, meeting the requirements to have the Enhanced Mobility for Seniors and individuals with Disabilities formulized federal funding within an approved PTP prior to TIP approval. The following narrative describes the projects within the initial year of the plan.

**General Operations:** This funding supports the day-to-day transit operations of the Ames Transit Authority from Ames’ urbanized area federal apportionment, Transit Intensive Cities, and State Transit Assistance funding.

**Contracted Paratransit (Dial-A-Ride) Service:** According to federal regulations, public transit agencies providing fixed-route transit service in their community must also provide door-to-door transportation service within a ¼ mile area of that fixed-route service. Therefore, CyRide purchases transportation service for its Dial-A-Ride operations in order to meet this ADA requirement. This requirement has been expanded to the entire city limits of Ames.

**Associated Transit Improvements:** CyRide developed a Bus Stop Plan that recommended an implementation plan for bus stop amenities along CyRide's fixed-route system. From the prioritization of recommended stop improvements, concrete pads will be added for easier boarding/alighting during inclement weather as well as replacing bus shelters with lighted bus shelters to improve the accessibility for patrons and CyRide's image throughout the Ames community. In February 2013, CyRide launched Nextbus allowing passengers to obtain real-time information of the next buses coming to a particular bus stop. The information can be obtained on CyRide's website, by texting or calling or via LED digital signs at the bus stop. CyRide envisions additional LED digital signage signs next to high ridership stops throughout the Ames community.

**Heavy Duty Bus Replacement:** Eight buses have exceeded FTA guidelines for useful life. Bus numbers are 00147, 00716, 00715, 00711, 00712, 00713, 00717 and 00742. These units will be replaced with 40' heavy-duty buses, equipped with cameras. These replacement vehicles will be ADA accessible.

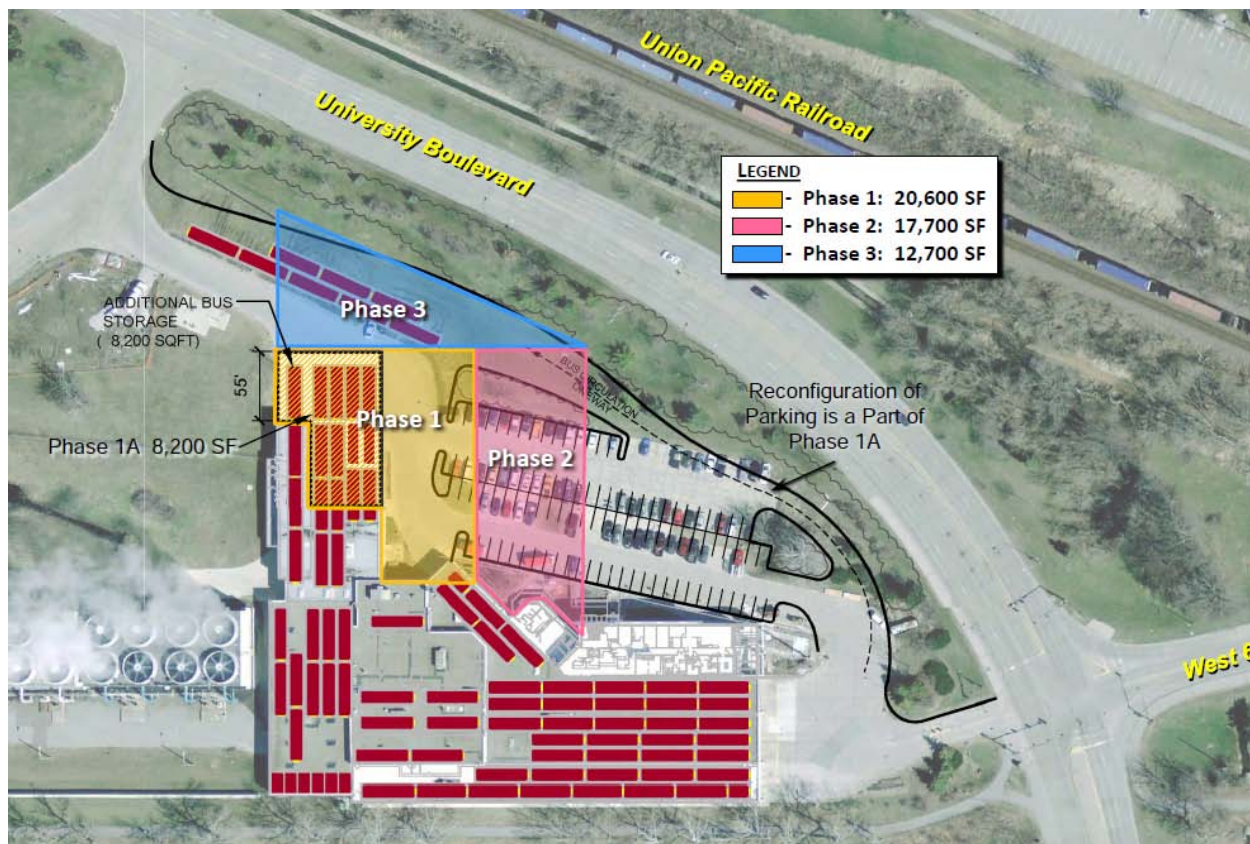
**Light Duty Bus Replacement:** One bus has exceeded FTA guidelines for useful life. The bus number is 7640 which CyRide leases to Heart of Iowa Regional Transit Agency to operate its ADA complimentary service (Dial-A-Ride). This unit will be replaced with another light-duty bus, equipped with cameras. This replacement vehicle will be ADA accessible.

**Blue Route (Sunday):** CyRide is planning to double its frequency on the Sunday Blue route to 20-minute intervals between 11:00 am and 5:00 pm. The route currently operates at 40-minute intervals. One bus will be added on Sundays and serve a portion of the route between ISU campus and the Wal-Mart on South Duff Avenue. This will help reduce overcrowding and on-time performance issues currently being experienced on the route. Additionally, this change will improve service by decreasing wait times for customers. Many trips along this portion of the route on Sunday consistently exceed 60 passengers per bus, which is standing capacity. The seated capacity is 39 passengers. CyRide is requesting the first year of operating funding through STA Special Project funding with the next two years through Iowa's Clean Air Attainment Program (ICAAP) funding.

**Brown/Green Route (Weekday):** CyRide is planning to add two additional buses along the Brown Route and one bus to the Green route each weekday between 11:30am and 6:00pm. Ridership has grown on both these corridors to the point where overcrowding occurs and buses are having a difficult time staying on time and buses are exceeding standing capacity. Ridership on the Brown route has grown by more than 45% over the past three years due to the influx of students to apartments north of Somerset and full utilization of the Wallace/Wilson Residence Halls. An added benefit of this change is that the Brown/Green routes will now be able to meet other buses (Red and Blue routes) to make transfers allowing customers to switch between buses to travel to other areas of campus or the city. Currently the Brown route bus arrives several minutes after the other route buses have left, causing customers to wait almost 20 more minutes until their next bus arrives.

**Heavy Duty Bus Expansion:** CyRide plans to operate two additional buses to expand its service on the Brown/Green Routes beginning in August 2014. CyRide is requesting two expansion buses to operate this service given that the entire system only has three spare buses during its peak pull out period. The Federal Transit Administration recommends a 20% spare ratio or currently 14 buses. These units will be 40' heavy-duty buses, equipped with cameras and will be ADA accessible.

**Maintenance Facility Expansion:** CyRide plans to construct additional bus storage to its existing maintenance storage facility completing Phase 1 (orange area) under Option 12 within their Maintenance Facility Expansion Feasibility Plan developed in 2010. CyRide is currently finalizing construction of Phase 1A (8,200 square feet) and anticipates buses will be parked outside again once an additional 5 used buses are purchased for increased passenger demand within the Ames community. Completing the remaining portion of Phase 1, or Phase 1B, will add another 12,400 square feet for additional storage of buses and is a natural expansion in the scalable project developed under this plan.



**Appendix A:  
FY 2015 – 18 TIP TPMS Printouts**

# MPO-22 / AAMPO

## 2015 - 2018 Transportation Improvement Program

TPMS Sponsor Appr. Status	Project # Location Funding Program	Length FHWA# S:T:R		Pgm'd Amounts in 1000's				Total	STIP#
				FY15	FY16	FY17	FY18		
<b>STP - Surface Transportation Program</b>									
Story - 85									
19248 Ames	<b>STP-U-0155(688)--70-85 DOT Letting: 12/16/2014</b> 24TH ST AND BLOOMINGTON RD: 24th St. (UPRR tracks to Northwestern Ave.) and Bloomington Rd. (Eisenhower Ave. to west 500 ft.) Pavement Rehab	0.09 MI --	Project Total Federal Aid	1,832 1,292	0 0	0 0	0 0	1,832 1,292	
Draft TIP Approved		0:0:0	Regional FA	1,292	0	0	0	1,292	--
16103 MPO-22 / AAMPO	<b>RGPL-PA22(RTP)--ST-85</b> Ames MPO Planning: STP Funds for Transportation Planning Trans Planning	0 MI --	Project Total Federal Aid	296 237	0 0	0 0	0 0	296 237	
Draft TIP Approved		--	Regional FA	155	0	0	0	155	--
17023 Ames	<b>STP-U-0155(ELW)--70-85</b> In the City of Ames, E LINCOLN WAY: From South Duff Avenue to and including South Skunk River Bridge Pavement Rehab,Bridge Rehabilitation	1.11 MI --	Project Total Federal Aid	0 0	2,130 1,060	0 0	0 0	2,130 1,060	
Draft TIP Approved		0:0:0	Regional FA	0	1,060	0	0	1,060	--
16032 Ames	<b>STP-U-0155(Grand3)--70-85</b> GRAND AVE: S Grand Ave: 0.1 miles north of S. 16th Street to Squaw Creek Dr / S 5th St:S Grand Ave to S Duff Ave / S 16th & S Duff Ave Intersection Grade and Pave,Bridge New	0.652 MI --	Project Total Federal Aid	0 0	1,000 0	4,650 700	6,500 1,300	12,150 2,000	
Draft TIP Approved		0:0:0	Regional FA	0	0	700	1,300	2,000	--
19961 Ames	<b>STP-U-0155(S 3RD / S 4TH)--70-85</b> In the City of Ames, S 3RD ST / S 4TH ST: From Squaw Creek to South Duff Avenue Pavement Rehab	2.02 --	Project Total Federal Aid	0 0	0 0	1,867 1,292	0 0	1,867 1,292	
Draft TIP Approved		0:0:0	Regional FA	0	0	1,292	0	1,292	--
<b>STP-HBP - Surface Transportation Program - Bridge Program</b>									
Story - 85									
29713 [NBIS: 000180] Ames	<b>BRM-0155(685)--8N-85 DOT Letting: 12/16/2014</b> In the city of Ames, On 6TH ST, Over SQUAW CREEK Bridge Replacement	0 000180	Project Total Federal Aid	2,425 1,000	0 0	0 0	0 0	2,425 1,000	
Draft TIP Approved		0:0:00	Regional FA	0	0	0	0	0	--
<b>NHPP - National Highway Performance Program</b>									
Story - 85									
22016 [NBIS: 49210] DOT-D01-MPO22	<b>IM--35)--13-85</b> I35: US 30 INTERCHANGE IN AMES Pave,Bridge New,Grading	0.503 49210	Project Total Federal Aid	0 0	100 0	9,500 8,550	3,864 3,478	13,464 12,028	
Draft TIP Approved		--	Regional FA	0	0	0	0	0	--

TPMS Sponsor Appr. Status	Project # Location Funding Program	Length FHWA# S:T:R		Pgm'd Amounts in 1000's				Total	STIP#
				FY15	FY16	FY17	FY18		
<b>TAP - Transportation Alternatives</b>									
Story - 85									
1948 Ames Draft TIP Approved	<b>STP-E-0155(S DUFF)--8V-85</b> In the City of Ames, S DUFF AVE: From Squaw Creek to South 5th Street Ped/Bike Grade & Pave	0.16 MI -- 0:0:0	Project Total Federal Aid Regional FA	100 70 70	0 0 0	0 0 0	0 0 0	100 70 70	--
14982 Ames Draft TIP Approved	<b>STP-E-0155(682)--8V-85 Local Letting: 03/19/2015</b> In the City of Ames, Skunk River Trail: From East Lincoln Way to S. River Valley Park Ped/Bike Grade & Pave	0.635 MI -- --	Project Total Federal Aid Regional FA	790 360 360	0 0 0	0 0 0	0 0 0	790 360 360	--
15628 Story CCB Draft TIP Approved	<b>STP-E-C085(100)--8V-85 Local Letting: 12/21/2021</b> Gilbert to Ames Trail: Trail connection from Gilbert, Iowa to Ames, Iowa Ped/Bike ROW	2.997 MI -- --	Project Total Federal Aid Regional FA	983 62 62	0 0 0	0 0 0	0 0 0	983 62 62	--
<b>PA NOTE:</b> STP = \$61,579									
<b>DOT NOTE:</b> Project funded using CIRTPA TAP funds									
21260 Ames Draft TIP Approved	<b>STP-E-0155(SE16TH)--8V-85</b> In the City of Ames, Skunk River Trail: From SE 16th Street to East Lincoln Way Ped/Bike Structures, Ped/Bike Miscellaneous	1.033 MI -- --	Project Total Federal Aid Regional FA	0 0 0	835 160 160	0 0 0	0 0 0	835 160 160	--
14983 Ames Draft TIP Approved	<b>STP-E-0155(SE16th)--70-85</b> In the City of Ames, Skunk River Trail: From SE 16th Street to East Lincoln Way Ped/Bike Grade & Pave	1 MI -- --	Project Total Federal Aid Regional FA	0 0 0	0 0 0	521 160 160	0 0 0	521 160 160	--
17025 Ames Draft TIP Approved	<b>STP-E-0155()--8V-85</b> In the city of Ames, Skunk River Trail: River Valley Park to Bloomington Road Ped/Bike Grade & Pave	0.75 MI -- --	Project Total Federal Aid Regional FA	0 0 0	0 0 0	0 0 0	586 140 140	586 140 140	--
<b>PRF - Primary Road Funds</b>									
Story - 85									
22052 [NBIS: 048710] DOT-D01-MPO22 Draft TIP Approved	<b>BRFN--30()--39-85</b> US 30: US 69/BIKE PATH, IN AMES (EB) Bridge Deck Overlay	0 MI 048710 --	Project Total Federal Aid Regional FA	456 0 0	0 0 0	0 0 0	0 0 0	456 0 0	--

## MPO-22 / AAMPO (63 Projects)

Fund	Sponsor	Transit # Expense Class Project Type	Desc / Add Ons / Addnl Info		FY15	FY16	FY17	FY18
STA, 5307	Ames	914 Operations Misc	General Operations	<b>Total</b>	9,419,737	9,796,527	10,188,387	10,595,923
				<b>FA</b>	2,100,000	2,184,000	2,271,360	2,362,214
				<b>SA</b>	604,598	628,782	653,933	680,091
5310	Ames	919 Operations Misc	Contracted Paratransit Service	<b>Total</b>	239,075	248,638	258,584	268,926
				<b>FA</b>	191,260	198,910	206,867	215,141
				<b>SA</b>				
5310	Ames	920 Capital Replacement	Associated Transit Improvements	<b>Total</b>	50,000	50,000	50,000	50,000
				<b>FA</b>	40,000	40,000	40,000	40,000
				<b>SA</b>				
5339	Ames	1910 Capital Replacement	Heavy Duty Bus (40-42 ft.) VSS, Low Floor, BioDiesel Unit #: 00742	<b>Total</b>	439,000			
				<b>FA</b>	373,150			
				<b>SA</b>				
5339	Ames	3305 Capital Replacement	Heavy Duty Bus (40-42 ft.) VSS, Low Floor, BioDiesel Unit #: 00147	<b>Total</b>	439,000			
				<b>FA</b>	373,150			
				<b>SA</b>				
5339	Ames	3306 Capital Replacement	Heavy Duty Bus (40-42 ft.) VSS, Low Floor, BioDiesel Unit #: 00716	<b>Total</b>	439,000			
				<b>FA</b>	373,150			
				<b>SA</b>				
5339	Ames	3307 Capital Replacement	Heavy Duty Bus (40-42 ft.) VSS, Low Floor, BioDiesel Unit #: 00715	<b>Total</b>	439,000			
				<b>FA</b>	373,150			
				<b>SA</b>				
5339	Ames	3308 Capital Replacement	Heavy Duty Bus (40-42 ft.) VSS, Low Floor, BioDiesel Unit #: 00711	<b>Total</b>	439,000			
				<b>FA</b>	373,150			
				<b>SA</b>				
5339	Ames	3309 Capital Replacement	Heavy Duty Bus (40-42 ft.) VSS, Low Floor, BioDiesel Unit #: 00712	<b>Total</b>	439,000			
				<b>FA</b>	373,150			
				<b>SA</b>				
5339	Ames	3310 Capital Replacement	Heavy Duty Bus (40-42 ft.) VSS, Low Floor, BioDiesel Unit #: 00713	<b>Total</b>	439,000			
				<b>FA</b>	373,150			
				<b>SA</b>				
5339	Ames	3311 Capital Replacement	Heavy Duty Bus (40-42 ft.) VSS, Low Floor, BioDiesel Unit #: 00717	<b>Total</b>	439,000			
				<b>FA</b>	373,150			
				<b>SA</b>				
5339	Ames	3313 Capital Replacement	Light Duty Bus (176" wb) VSS Unit #: 7640	<b>Total</b>	89,000			
				<b>FA</b>	75,650			
				<b>SA</b>				
PTIG, 5309, 5339	Ames	3314 Capital Expansion	Maintenance Facility Expansion	<b>Total</b>	1,537,500	1,066,500		
				<b>FA</b>	430,000	853,200		
				<b>SA</b>	800,000			
5339	Ames	2437 Capital Replacement	Heavy Duty Bus (40-42 ft.) Diesel, UFRC, VSS, Low Floor, BioDiesel Unit #: 00956	<b>Total</b>	439,000	452,171		
				<b>FA</b>	373,150	384,345		
				<b>SA</b>				
STA, ICAAP	Ames	3318 Operations Expansion	Blue Route Sunday	<b>Total</b>	30,696			
				<b>FA</b>	16,690			
				<b>SA</b>	7,867			

## MPO-22 / AAMPO (63 Projects)

Fund	Sponsor	Transit # Expense Class Project Type	Desc / Add Ons / Addnl Info		FY15	FY16	FY17	FY18
STA, ICAAP	Ames	3319 Operations Expansion	Brown/Green Weekday	<b>Total</b>	588,335			
				<b>FA</b>	319,890			
				<b>SA</b>	150,778			
ICAAP	Ames	3320 Capital Expansion	Heavy Duty Bus (40-42 ft.) Diesel, UFRC, VSS, Low Floor, BioDiesel	<b>Total</b>	439,000			
				<b>FA</b>	351,200			
				<b>SA</b>				
ICAAP	Ames	3321 Capital Expansion	Heavy Duty Bus (40-42 ft.) Diesel, UFRC, VSS, Low Floor, BioDiesel	<b>Total</b>	439,000			
				<b>FA</b>	351,200			
				<b>SA</b>				
5339	Ames	3315 Capital Replacement	Heavy Duty Bus (40-42 ft.) Diesel, UFRC, VSS, Low Floor, BioDiesel Unit #: 00743	<b>Total</b>		452,171		
				<b>FA</b>		384,345		
				<b>SA</b>				
PTIG	Ames	3317 Capital Rehabilitation	Maintenance Pits	<b>Total</b>		250,000		
				<b>FA</b>				
				<b>SA</b>		200,000		
5339	Ames	1905 Capital Replacement	Heavy Duty Bus (40-42 ft.) Diesel, UFRC, VSS, Low Floor, BioDiesel Unit #: 00714	<b>Total</b>		452,171		
				<b>FA</b>		384,345		
				<b>SA</b>				
ICAAP	Ames	1913 Capital Expansion	Nextbus Signage/bus stop signage	<b>Total</b>		100,000		
				<b>FA</b>		80,000		
				<b>SA</b>				
5339	Ames	2434 Capital Replacement	Heavy Duty Bus (40-42 ft.) VSS, Low Floor, BioDiesel Unit #: 00953	<b>Total</b>		452,171		
				<b>FA</b>		384,345		
				<b>SA</b>				
5339	Ames	2435 Capital Replacement	Heavy Duty Bus (40-42 ft.) Diesel, UFRC, VSS, Low Floor, BioDiesel Unit #: 00954	<b>Total</b>		452,171		
				<b>FA</b>		384,345		
				<b>SA</b>				
5339	Ames	945 Capital Expansion	Facility cameras/Proximity Card Access - 20 cameras/10 cards	<b>Total</b>		58,360		
				<b>FA</b>		46,688		
				<b>SA</b>				
5339	Ames	946 Capital Rehabilitation	Electric distribution rehabilitation	<b>Total</b>		246,000		
				<b>FA</b>		240,000		
				<b>SA</b>				
5339	Ames	951 Capital Expansion	Automatic passenger counters	<b>Total</b>		500,000		
				<b>FA</b>		400,000		
				<b>SA</b>				
5339	Ames	2439 Capital Replacement	Heavy Duty Bus (40-42 ft.) Diesel, UFRC, VSS, Low Floor, BioDiesel Unit #: 00958	<b>Total</b>		452,171		
				<b>FA</b>		384,345		
				<b>SA</b>				
5339	Ames	2440 Capital Expansion	Heavy Duty Articulated Bus VSS, Low Floor, BioDiesel	<b>Total</b>		733,200		
				<b>FA</b>		623,220		
				<b>SA</b>				
5339	Ames	2442 Capital Expansion	Heavy Duty Articulated Bus VSS, Low Floor, BioDiesel	<b>Total</b>		733,200		
				<b>FA</b>		623,220		
				<b>SA</b>				



## MPO-22 / AAMPO (63 Projects)

Fund	Sponsor	Transit # Expense Class Project Type	Desc / Add Ons / Addnl Info		FY15	FY16	FY17	FY18
5339	Ames	2443 Capital Expansion	Heavy Duty Articulated Bus VSS, Low Floor, BioDiesel	<b>Total</b>		733,200		
				<b>FA</b>		623,220		
				<b>SA</b>				
5339	Ames	2444 Capital Expansion	Heavy Duty Bus (40-42 ft.) VSS, Low Floor, BioDiesel	<b>Total</b>		452,171		
				<b>FA</b>		384,345		
				<b>SA</b>				
5339	Ames	2445 Capital Expansion	Heavy Duty Bus (40-42 ft.) VSS, Low Floor, BioDiesel	<b>Total</b>		452,171		
				<b>FA</b>		384,345		
				<b>SA</b>				
5339	Ames	2446 Capital Expansion	Heavy Duty Bus (40-42 ft.) Diesel, UFRC, VSS, Low Floor, BioDiesel	<b>Total</b>		452,171		
				<b>FA</b>		384,345		
				<b>SA</b>				
5339	Ames	2447 Capital Expansion	Heavy Duty Bus (40-42 ft.) Diesel, UFRC, VSS, Low Floor, BioDiesel	<b>Total</b>		452,171		
				<b>FA</b>		384,345		
				<b>SA</b>				
5339	Ames	2448 Capital Replacement	Light Duty Bus (176" wb) Diesel, UFRC, VSS, Low Floor, BioDiesel Unit #: 00334	<b>Total</b>		107,120		
				<b>FA</b>		91,052		
				<b>SA</b>				
5339	Ames	2449 Capital Replacement	Light Duty Bus (176" wb) Diesel, UFRC, VSS, Low Floor, BioDiesel Unit #: 00335	<b>Total</b>		107,120		
				<b>FA</b>		91,052		
				<b>SA</b>				
5339	Ames	2450 Capital Replacement	Light Duty Bus (176" wb) Diesel, UFRC, VSS, Low Floor, BioDiesel Unit #: 00336	<b>Total</b>		107,120		
				<b>FA</b>		91,052		
				<b>SA</b>				
5339	Ames	2451 Capital Replacement	Light Duty Bus (176" wb) Diesel, UFRC, VSS, Low Floor, BioDiesel Unit #: 00333	<b>Total</b>		107,120		
				<b>FA</b>		91,052		
				<b>SA</b>				
5339	Ames	2452 Capital Replacement	Light Duty Bus (158" wb) Diesel, UFRC, VSS, Low Floor, BioDiesel Unit #: 00337	<b>Total</b>		101,971		
				<b>FA</b>		86,675		
				<b>SA</b>				
5339	Ames	2453 Capital Replacement	Light Duty Bus (158" wb) Diesel, UFRC, VSS, Low Floor, BioDiesel Unit #: 00338	<b>Total</b>		101,971		
				<b>FA</b>		86,675		
				<b>SA</b>				
5339	Ames	2454 Capital Replacement	Vehicle Surveillance Systems	<b>Total</b>		150,000		
				<b>FA</b>		120,000		
				<b>SA</b>				
5339	Ames	2833 Capital Expansion	Heavy Duty Articulated Bus VSS, Low Floor, BioDiesel	<b>Total</b>		733,200		
				<b>FA</b>		623,220		
				<b>SA</b>				
5339	Ames	2834 Capital Replacement	Heavy Duty Bus (40-42 ft.) Diesel, UFRC, VSS, Low Floor, BioDiesel Unit #: 00740	<b>Total</b>		452,171		
				<b>FA</b>		384,345		
				<b>SA</b>				
5339	Ames	2835 Capital Replacement	Heavy Duty Bus (40-42 ft.) Diesel, UFRC, VSS, Low Floor, BioDiesel Unit #: 00739	<b>Total</b>		452,171		
				<b>FA</b>		384,345		
				<b>SA</b>				

## MPO-22 / AAMPO (63 Projects)

Fund	Sponsor	Transit # Expense Class Project Type	Desc / Add Ons / Addnl Info		FY15	FY16	FY17	FY18
5339	Ames	2836 Capital Replacement	Heavy Duty Bus (40-42 ft.) Diesel, UFRC, VSS, Low Floor, BioDiesel Unit #: 00971	<b>Total</b>			465,736	
				<b>FA</b>			395,875	
				<b>SA</b>				
PTIG	Ames	953 Capital Replacement	Re-roof Maintenance facility	<b>Total</b>			500,000	
				<b>FA</b>				
				<b>SA</b>			400,000	
5339	Ames	2436 Capital Replacement	Heavy Duty Bus (40-42 ft.) Diesel, UFRC, VSS, Low Floor, BioDiesel Unit #: 00955	<b>Total</b>			465,736	
				<b>FA</b>			395,875	
				<b>SA</b>				
5339	Ames	1891 Capital Replacement	Heavy Duty Bus (40-42 ft.) Diesel, UFRC, VSS, Low Floor, BioDiesel Unit #: 00970	<b>Total</b>			465,736	
				<b>FA</b>			395,875	
				<b>SA</b>				
5339	Ames	1894 Capital Replacement	Heavy Duty Bus (40-42 ft.) Diesel, UFRC, VSS, Low Floor, BioDiesel Unit #: 00972	<b>Total</b>			465,736	
				<b>FA</b>			395,875	
				<b>SA</b>				
5339	Ames	1898 Capital Replacement	Heavy Duty Bus (40-42 ft.) Diesel, UFRC, VSS, Low Floor, BioDiesel Unit #: 00974	<b>Total</b>			465,736	
				<b>FA</b>			395,875	
				<b>SA</b>				
5339	Ames	2438 Capital Replacement	Heavy Duty Bus (40-42 ft.) Diesel, UFRC, VSS, Low Floor, BioDiesel Unit #: 00957	<b>Total</b>			465,736	
				<b>FA</b>			395,875	
				<b>SA</b>				
5339	Ames	1900 Capital Replacement	Heavy Duty Bus (40-42 ft.) Diesel, UFRC, VSS, Low Floor, BioDiesel Unit #: 00976	<b>Total</b>			465,736	
				<b>FA</b>			395,875	
				<b>SA</b>				
5339	Ames	1901 Capital Replacement	Heavy Duty Bus (40-42 ft.) Diesel, UFRC, VSS, Low Floor, BioDiesel Unit #: 00977	<b>Total</b>			465,736	
				<b>FA</b>			395,875	
				<b>SA</b>				
5339	Ames	1899 Capital Replacement	Heavy Duty Bus (40-42 ft.) Diesel, UFRC, VSS, Low Floor, BioDiesel Unit #: 00975	<b>Total</b>				479,708
				<b>FA</b>				407,751
				<b>SA</b>				
5339	Ames	1895 Capital Replacement	Heavy Duty Bus (40-42 ft.) Diesel, UFRC, VSS, Low Floor, BioDiesel Unit #: 00973	<b>Total</b>				479,708
				<b>FA</b>				407,751
				<b>SA</b>				
5339	Ames	957 Capital Rehabilitation	Resurface ISC Commuter Parking	<b>Total</b>				1,000,000
				<b>FA</b>				720,000
				<b>SA</b>				
5339	Ames	2837 Capital Replacement	Heavy Duty Bus (40-42 ft.) Diesel, UFRC, VSS, Low Floor, BioDiesel Unit #: 00950	<b>Total</b>				479,708
				<b>FA</b>				407,751
				<b>SA</b>				
5339	Ames	2838 Capital Replacement	Heavy Duty Bus (40-42 ft.) Diesel, UFRC, VSS, Low Floor, BioDiesel Unit #: 00951	<b>Total</b>				479,708
				<b>FA</b>				407,751
				<b>SA</b>				
5339	Ames	2839 Capital Replacement	Heavy Duty Bus (40-42 ft.) Diesel, UFRC, VSS, Low Floor, BioDiesel Unit #: 00952	<b>Total</b>				479,708
				<b>FA</b>				407,751
				<b>SA</b>				

## MPO-22 / AAMPO (63 Projects)

Fund	Sponsor	Transit # Expense Class Project Type	Desc / Add Ons / Addnl Info		FY15	FY16	FY17	FY18
5339	Ames	2840	Heavy Duty Bus (40-42 ft.)	<b>Total</b>				479,708
		Capital	Diesel, UFRC, VSS, Low Floor, BioDiesel	<b>FA</b>				407,751
		Replacement	Unit #: 00949	<b>SA</b>				
5339	Ames	2841	Heavy Duty Bus (40-42 ft.)	<b>Total</b>				479,708
		Capital	Diesel, UFRC, VSS, Low Floor, BioDiesel	<b>FA</b>				407,751
		Replacement	Unit #: 00504	<b>SA</b>				
5339	Ames	2842	Heavy Duty Bus (40-42 ft.)	<b>Total</b>				479,708
		Capital	Diesel, UFRC, VSS, Low Floor, BioDiesel	<b>FA</b>				407,751
		Replacement	Unit #: 00502	<b>SA</b>				

*AAMPO FY 2015 – 18 Transportation Improvement Program*

***Appendix B:***

***FY 2015 – 18 TIP Roadway Project Information***

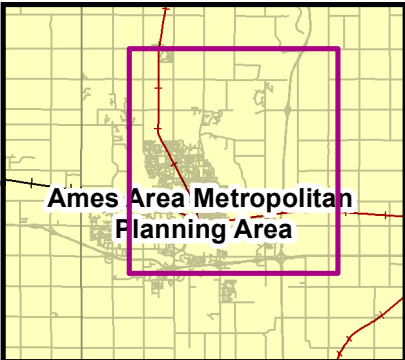
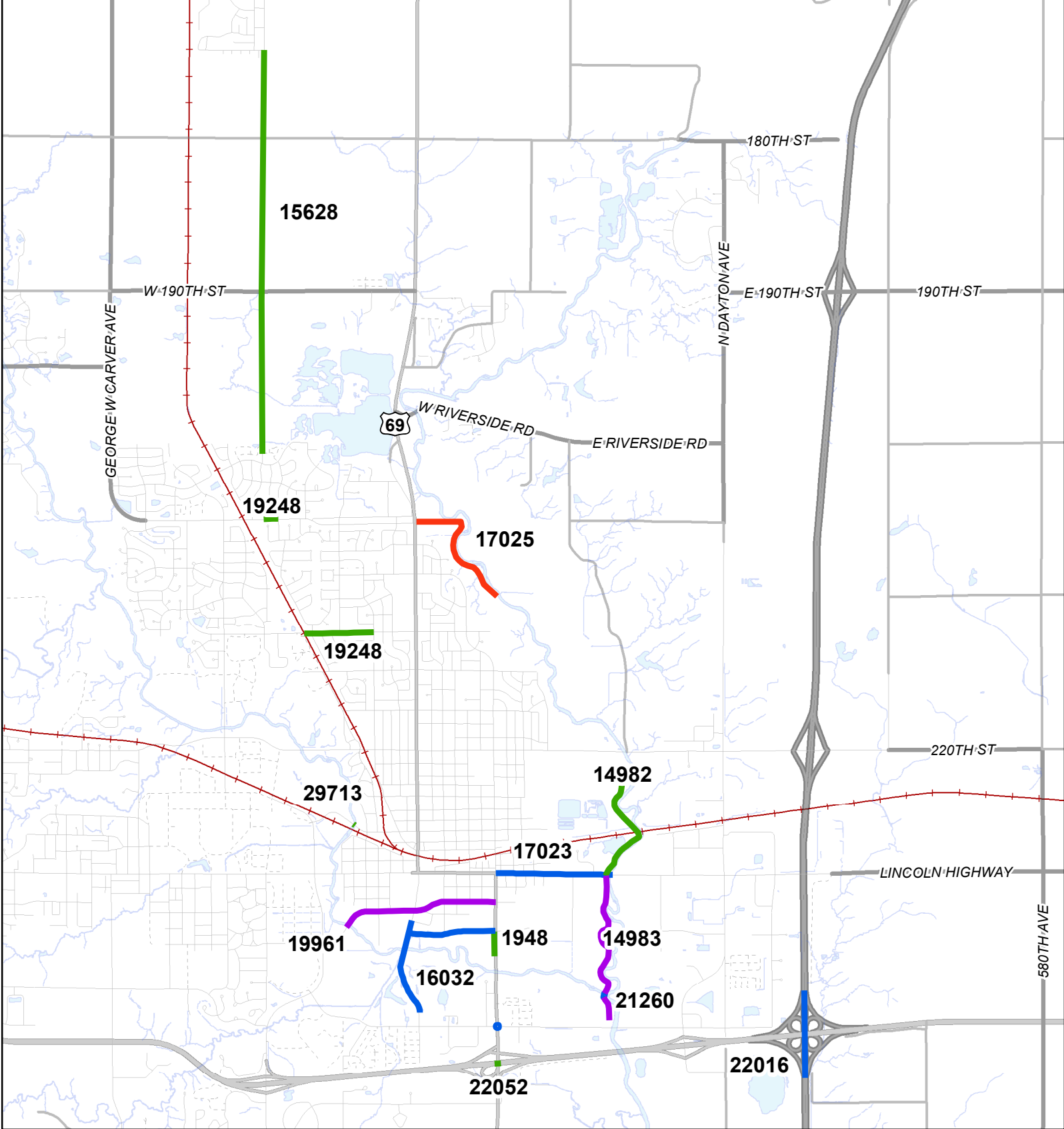
## AAMPO FY 2015 – 18 Transportation Improvement Program

TPMS #	19248	17023	16032	19961	14982	1948	29713
<b>Project Sponsor Government</b>	City of Ames	City of Ames	City of Ames	City of Ames	City of Ames	City of Ames	City of Ames
<b>Federal Funding Source</b>	Surface Transportation Program	Surface Transportation Program	Surface Transportation Program	Surface Transportation Program	Transportation Alternatives Program	Transportation Alternatives Program	STP Highway Bridge Program
<b>Federal Fiscal Year</b>	2015	2016	2016-2018	2017	2015	2015	2015
<b>Route or Street Name</b>	24 <sup>th</sup> Street and Bloomington Road	East Lincoln Way	Grand Avenue	South 3rd Street / South 4th Street	Skunk River Trail	South Duff Avenue	6th Street
<b>Termini</b>	UPRR tracks to Northwestern Avenue and Eisenhower Avenue to west 500 feet	South Duff Avenue to and including South Skunk River Bridge	Grand Ave: 0.1 miles north of S. 16th St. to Squaw Creek Dr. / S. 5th St.; Grand Ave to S. Duff Ave / S 16th St and S. Duff Ave Intersection	Squaw Creek to South Duff Avenue	East Lincoln Way to South River Valley Park	Squaw Creek to South 5th Street	Over Squaw Creek
<b>Bridge Number</b>	-	-	New	-	-	-	180
<b>Length in miles</b>	0.54	1.11	1.21	2.02	0.94	0.2	-
<b>Type of Work</b>	Pavement Rehabilitation	Pavement Rehabilitation, Bridge Rehabilitation	Grade and Pave, New Bridge	Pavement Rehabilitation	Ped / Bike Grade & Pave	Ped / Bike Grade & Pave	Bridge Replacement
<b>Map Included</b>	Yes	Yes	Yes	Yes	Yes	Yes	Yes
<b>Total Estimated Cost</b>	\$1,832,000	\$2,130,000	\$12,150,000	\$1,867,000	\$790,000	\$100,000	\$2,425,000
<b>Federal Aid</b>	\$1,292,000 STP	\$1,060,000 STP	\$2,000,000 STP	\$1,292,000 STP	\$360,000 TAP	\$70,000 TAP	\$1,000,000 STP-HBP
<b>Local Match</b>	\$525,000 G.O. Bond	\$970,000 G.O. Bond	\$3,330,000 G.O. Bond	\$525,000 G.O. Bond	\$430,000 LOST	\$30,000 LOST	\$1,425,000 G.O. Bond
	\$15,000 EUF	\$100,000 EUF	\$6,820,000 Other	\$50,000 EUF	\$0	\$0	\$0

**Funding Program Key**

GO Bond General Obligation Bond  
 EUF Electric Utility Fund  
 STP Surface Transportation Program  
 LOST Local Option Sales Tax

TPMS #	21260	14983	16103	22052	17025	22016	15628
<b>Project Sponsor Government</b>	City of Ames	City of Ames	Ames Area MPO	DOT - District 1	City of Ames	DOT - District 1	Story County
<b>Federal Funding Source</b>	Transportation Alternatives Program	Transportation Alternatives Program	Metropolitan Planning Funds	Primary Roads Funds	Transportation Alternatives Program	National Highway Performance Program	Transportation Alternatives Program
<b>Federal Fiscal Year</b>	2016	2017	2015	2015	2018	2016-2018	2015
<b>Route or Street Name</b>	Skunk River Trail	Skunk River Trail	Ames Area MPO Transportation Planning	US Highway 30	Skunk River Trail	Interstate 35	Gilbert to Ames Trail
<b>Termini</b>	Southeast 16th Street to East Lincoln Way	Southeast 16th Street to East Lincoln Way	Long Range Transportation Plan Update	US 69/Bike Path in Ames (EB)	River Valley Park to Bloomington Road	US 30 Interchange in Ames	Trail connection from Gilbert, IA to Ames, IA
<b>Bridge Number</b>	-	-	-	48710	-	-	-
<b>Length in miles</b>	1	1	-	-	0.75	-	2.5
<b>Type of Work</b>	Ped/Bike Structures, Ped/Bike Miscellaneous	Ped / Bike Grade & Pave	Transportation Planning	Bridge Deck Overlay	Ped / Bike Grade & Pave	Bridge New, Grading, ROW	Ped/Bike ROW
<b>Map Included</b>	Yes	Yes	No	Yes	Yes	Yes	Yes
<b>Total Estimated Cost</b>	\$835,000	\$521,000	\$296,000	\$456,000	\$586,000	\$9,600,000	\$983,000
<b>Federal Aid</b>	\$160,000 TAP	\$160,000 TAP	\$155,000 STP	\$0	\$140,000 TAP	\$8,550,000	\$62,000 TAP (from CRTPA)
<b>Local Match</b>	\$675,000 LOST	\$361,000 LOST	\$59,000 RUTF	\$0	\$446,000 LOST	\$1,050,000	\$921,000
	\$0	\$0	\$82,000 PL	\$0		\$0	\$0

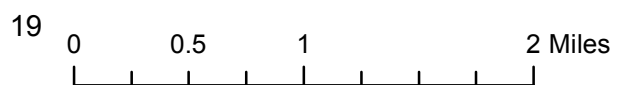


**2015-2018 Projects**  
**First Program Year**

- 2015
- 2016
- 2017
- 2018

MPA Boundary

**FY 2015 - 2018 TIP  
 Project Location Map**



***Appendix C:  
AAMPO Self Certification***

**AMES AREA METROPOLITAN PLANNING ORGANIZATION  
ANNUAL SELF-CERTIFICATION**

In accordance with 23 CFR 450.334, the STATE DEPARTMENT OF TRANSPORTATION and the Ames Area Metropolitan Planning Organization for the Ames, Iowa urbanized area(s) hereby certify that the transportation planning process is addressing the major issues in the metropolitan planning area and is being conducted in accordance with all applicable requirements of:

- (1) 23 U.S.C. 134, 49 U.S.C. Section 5303, and 23 CFR Part 450;
- (2) In nonattainment and maintenance areas, Sections 174 and 176(c) and (d) of the Clean Air Act as amended (42 U.S.C. 7504, 7506(c) and (d) and 40 CFR 93);
- (3) Title VI of the Civil Rights Act of 1964, as amended (42 U.S.C. 2000d-1) and 49 CFR part 21;
- (4) 49 U.S.C. 5332, prohibiting discrimination on the basis of race, color, creed, national origin, sex or age in employment or business opportunity;
- (5) Section 1101(b) of the Safe, Accountable, Flexible, Efficient Transportation Equity Act: A Legacy for Users (Pub. L. 109-59) regarding the involvement of Disadvantaged Business Enterprises in FHWA and FTA funded planning;
- (6) 23 CFR part 230, regarding the implementation of an equal employment opportunity program on Federal and Federal-aid highway construction contracts;
- (7) The provisions of the Americans with Disabilities Act of 1990 (Pub. L. 101-336, 104 Stat. 327, as amended) and USDOT implementing regulation;
- (8) Older Americans Act, as amended (42 U.S.C. 6101);
- (9) 23 U.S.C. 324, regarding prohibition of discrimination based on gender; and
- (10) Section 504 of the Rehabilitation Act of 1973 and 49 CFR Part 27, regarding discrimination against individuals with disabilities.

For AAMPO:

  
Ann Campbell, Chair  
Transportation Policy Committee

  
Date



***Appendix D:  
Transportation Policy Committee Meeting Minutes***