

COUNCIL ACTION FORM

SUBJECT: TEMPORARY TRAFFIC SIGNAL INSTALLATION AT 13TH STREET AND KELLOGG AVENUE (FOR PHASE 2 OF HOSPITAL EXPANSION)

BACKGROUND:

Over the past several months, staff members from the City's Public Works, Police, and Fire Departments have been conducting planning meetings with Mary Greeley Medical Center (MGMC) staff regarding a change in traffic patterns on the Hospital campus associated with Phase 2 of their expansion project. Phase 2 will involve the reconstruction of the main east-west drive within their site at 11th Street and the relocation of the main entrance used for patients. **While under construction, traffic will be able to enter the Hospital campus only off of Duff Avenue and to exit the campus only on Kellogg Avenue.**

MGMC and City staff also had meetings with the neighborhoods that are directly affected by this change in traffic patterns. The residents stated that their major concerns with routing traffic onto Kellogg Avenue would be with allowing those vehicles to cut-through the neighborhood to the west and to the south. They were also concerned with the material staging and parking issues associated with construction along the west side of the Hospital campus during Phase 2.

In response to these concerns, a traffic control plan for Phase 2 of the project was developed to include several features to mitigate impacts on the neighborhoods. To prevent cut-through traffic, barricades will be placed at both the 11th Street and 12th Street intersections to direct exiting traffic northward along Kellogg Avenue to 13th Street and away from the neighborhood. To accomplish this redirection, the 11th and 12th Street exits will be channelized using concrete barriers to prevent southbound and westbound movements. It should also be noted that, with the support of the residents, parking will be prohibited along both sides of Kellogg Avenue within the work zone.

Since the rerouted traffic volumes will be similar to what is currently seen at the 11th Street and Duff Avenue traffic signal, City staff recommended for safety and operational reasons that a temporary traffic signal be installed at 13th Street and Kellogg Avenue. MGMC staff has agreed to pay for this temporary traffic control device, as well as for the electricity used for the signal. This temporary signal will be designed and installed following all applicable engineering standards.

A series of maps illustrating the extent of this traffic control plan are attached.

ALTERNATIVES:

1. Approve a temporary traffic signal at 13th Street and Kellogg Avenue and the attached overall traffic control plan until the 11th Street and Duff Avenue intersection is again fully operational.
2. Reject this project.

MANAGER'S RECOMMENDED ACTION:

Approving this temporary traffic signal at 13th Street and Kellogg Avenue will help facilitate the traffic control plan for Phase 2 of the Hospital expansion. The overall plan has addressed concerns of the surrounding neighborhoods and has been vetted by our Police and Fire Departments for any emergency response needs that may occur.

Therefore, it is the recommendation of the City Manager that the City Council adopt Alternative No. 1 as described above.

PACKAGE 2

Sidewalk Closed - Use Other Side Sign - At Flashing Crossing

Phase 2.1

June 1, 2014-Spring 2015

TEMPORARY SIGNAGE:
11th at Duff at Green Arrow: Construction Deliveries Only
11th and Duff at Blue Arrow: No Deliveries, Hospital Parking Only
ED Entrance: Emergency Department Entrance Only
Flagmen will be directing construction deliveries.

Sidewalk Closed - Use Other Side Sign

Main Entrance (arrow up)
Medical Arts Parking (arrow up)
Parking and Exit (arrow up)
Valet (arrow up)

Do Not Enter Sign - Install Both Sides of Road

Valet Parking (arrow up)
Self Parking (arrow left)
Exit (arrow up)

Tubular Deliniateors, Lane Divider Striping and Temporary Pavement Arrows

No Through Traffic Sign - 10th and Kellogg

Jersey Barrier Divider

Main Entrance (arrow up)
Valet (arrow up)
Self Parking (arrow up)
Medical Arts (arrow up)

No Left Turn Sign - 11th and Kellogg

Wrong Way Sign - 11th and Kellogg on Barrier

No Through Traffic Sign - 12th and Burnett

Jersey Barrier Road Closure

TEMPORARY SIGNAGE:
13th and Kellogg: Temporary Stop Light
No Parking: Kellogg from 13th to 11th Both Sides

NOTES:

- (A) NO CURB
- (B) 6" PCC MONOLITHIC CURB AND PAVING
- (C) 6" PCC INTEGRAL CURB AND SIDEWALK
- (D) 6" BEAM CURB, NOT APPLICABLE ON THIS SHEET
- (E) MATCH EXISTING PAVING, SEE DETAIL
- (F) PCC SIDEWALK, SEE DETAIL FOR SIDEWALK AT CURB CONDITION
- (G) CURB TAPER
- (H) RAMPED TRANSITION IN SIDEWALK
- (I) STRUCTURAL STOOP BY OTHERS, SEE DETAIL
- (J) ISOLATION JOINT
- (K) SITE LIGHTING, CONDUITS AND WIRING NOT IN THIS CONTRACT
- (L) DETECTABLE WARNING PAVEMENT
- (M) EXISTING OXYGEN TANK STRUCTURAL PAD AND ENCLOSURE
- (N) ELECTRICAL DUCTBANK AND SWITCHGEAR, NOT IN THIS CONTRACT
- (O) STRUCTURAL TRANSFORMER PADS, PER STRUCTURAL AND ELECTRICAL PLANS, NOT IN THIS CONTRACT

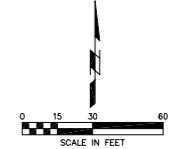
- (W) ADA PARKING SPACE SYMBOL
- (X) THROUGH LANE-USE ARROW
- (Y) TURN LANE-USE ARROW
- (Z) UNIT PAVERS, NOT APPLICABLE ON THIS SHEET
- (AA) RETAINING WALL, SEE DETAIL AND GRADING PLAN
- (BB) PCC CURB STOP, NOT APPLICABLE ON THIS SHEET
- (CC) SECURITY BOLLARD, SEE DETAIL
- (DD) CONCRETE WALL, SEE ARCHITECTURAL PLANS, NOT APPLICABLE ON THIS SHEET
- (EE) CONSTRUCTION LIMITS
- (FF) PAINTED CROSSWALK, 4" WIDE WHITE REFLECTIVE PAINT
- (GG) TEMPORARY GENERATOR LOCATION, TO BE COORDINATED IN FUTURE BID PACKAGES, NOT IN THIS CONTRACT

DRAWN: MMC
APPROVED: MJC
ISSUED FOR: CONSTRUCTION DOCUMENT
DATE: 01/27/2012
FIELD BOOK:

PROJECT NO.: 409345-1

SITE PLAN

2C101

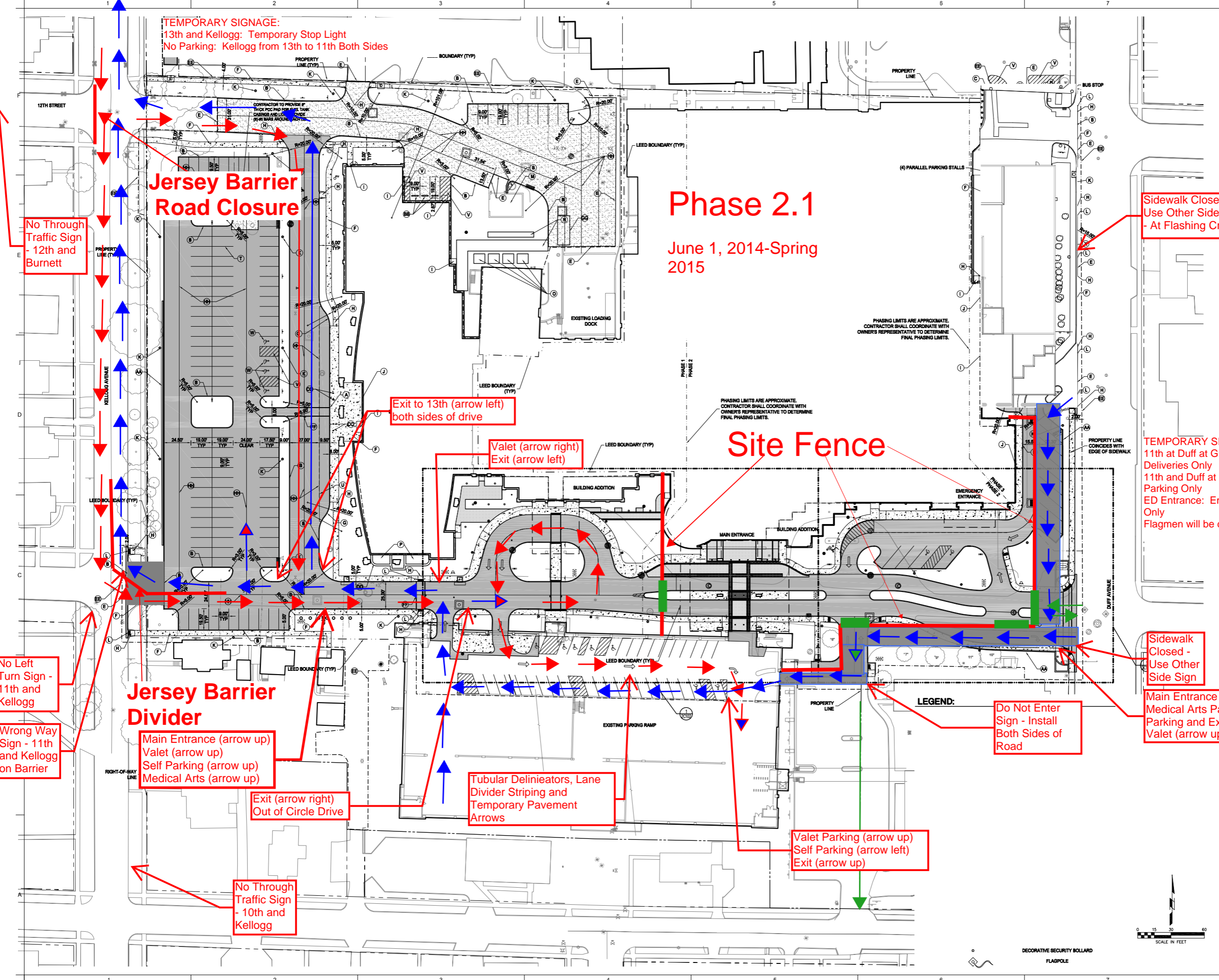


LEGEND:

DECORATIVE SECURITY BOLLARD
FLAGPOLE

PHASING LIMITS ARE APPROXIMATE. CONTRACTOR SHALL COORDINATE WITH OWNER'S REPRESENTATIVE TO DETERMINE FINAL PHASING LIMITS.

PHASING LIMITS ARE APPROXIMATE. CONTRACTOR SHALL COORDINATE WITH OWNER'S REPRESENTATIVE TO DETERMINE FINAL PHASING LIMITS.



BID PACKAGE 2

SITE KEYNOTES:

- (A) NO CURB
- (B) 6" PCC MONOLITHIC CURB AND PAVING
- (C) 6" PCC INTEGRAL CURB AND SIDEWALK
- (D) 6" BEAM CURB, NOT APPLICABLE ON THIS SHEET
- (E) MATCH EXISTING PAVING, SEE DETAIL.

Intermittent Daily Lane Closure - With Advance Warning and Arrow Board North of Closure

- (K) SITE LIGHTING, CONDUITS AND WIRING NOT IN THIS CONTRACT
- (L) DETECTABLE WARNING PAVEMENT
- (M) EXISTING OXYGEN TANK STRUCTURAL PAD AND ENCLOSURE
- (N) ELECTRICAL DUCTBANK AND SWITCHGEAR, NOT IN THIS CONTRACT
- (O) STRUCTURAL TRANSFORMER PADS, PER STRUCTURAL AND ELECTRICAL PLANS, NOT IN THIS CONTRACT

TEMPORARY SIGNAGE:
11th at Duff at Green Arrow: Construction Deliveries Only
11th and Duff at Blue Arrow: No Deliveries, Hospital Parking Only
11th and Duff at Blue Arrow: Emergency Entrance

Flagmen will be directing construction deliveries.

- (W) ADA PARKING SPACE SYMBOL
- (X) THROUGH LANE-USE ARROW
- (Y) TURN LANE-USE ARROW
- (Z) UNIT PAVERS, NOT APPLICABLE ON THIS SHEET
- (AA) RETAINING WALL, SEE DETAIL AND GRADING PLAN
- (BB) PCC CURB STOP, NOT APPLICABLE ON THIS SHEET
- (CC) SECURITY BOLLARD, SEE DETAIL
- (DD) CONCRETE WALL, SEE ARCHITECTURAL PLANS, NOT APPLICABLE ON THIS SHEET
- (EE) CONSTRUCTION LIMITS
- (FF) PAINTED CROSSWALK, 4' WIDE WHITE REFLECTIVE PAINT

Emergency/Ambulance Entrance (arrow up)
Main Entrance (arrow up)
Medical Arts Parking (arrow up)
Parking and Exit (arrow up)
Valet (arrow up)
West Entrance (arrow up)

DRAWN	MMC
APPROVED	MJC
ISSUED FOR	CONSTRUCTION DOCUMENT
DATE	01/27/2012
FIELD BOOK	
PROJECT NO.	409345-1

SITE PLAN

Phase 2.2
Spring 2015 - Fall 2015

TEMPORARY SIGNAGE:
13th and Kellogg: Temporary Stop Light
No Parking: Kellogg from 13th to 11th Both Sides

Jersey Barrier Road Closure

No Through Traffic Sign - 12th and Burnett

Exit to 13th (arrow left) both sides of drive

Temp. ED Entrance

Main Entrance (arrow right)
West Entrance (arrow up)

Site Fence

Exit (arrow left)

Sidewalk Closed - Use Other Side Sign - At Flashing Crossing

Sidewalk Closed - Use Other Side Sign

No Left Turn Sign - 11th and Kellogg

Wrong Way Sign - 11th and Kellogg on Barrier

Jersey Barrier Divider

West Entrance (arrow up)
Valet (arrow up)
Self Parking (arrow right)
Medical Arts (arrow right)

Exit (arrow right) Out of Circle Drive

West Entrance (arrow left)

Temporary Pavement Arrows

Do Not Enter Sign - Install Both Sides of Road from West

Do Not Enter Sign - Install Both Sides of Road from East

LEGEND:

- UNIT PAVERS
- P.C.C. SIDEWALK
- DETECTABLE WARNING PAD
- PAINTED CROSSWALK
- HANDICAPPED PARKING SYMBOL
- DISTURBANCE LIMITS
- EMERGENCY/AMBULANCE ENTRANCE (arrow right)
- MAIN ENTRANCE (arrow right)
- VALET (arrow right)
- SELF PARKING (arrow left)
- MEDICAL ARTS PARKING (arrow left)
- WEST ENTRANCE (arrow right)
- DECORATIVE SECURITY BOLLARD
- FLAGPOLE

No Through Traffic Sign - 10th and Kellogg

2011 MARY GREELEY MEDICAL CENTER ADDITION AND RENOVATION
 MARY GREELEY MEDICAL CENTER
 1111 DUFF AVENUE | AMES, IOWA 50010

BID PACKAGE 2

SITE KEYNOTES:

- (F) PCC SIDEWALK, SEE DETAIL FOR SIDEWALK AT CURB CONDITION
- (G) CURB TAPER
- (H) RAMPED TRANSITION IN SIDEWALK
- (I) STRUCTURAL STOOP BY OTHERS, SEE DETAIL
- (J) ISOLATION JOINT
- (K) SITE LIGHTING, CONDUITS AND WIRING NOT IN THIS CONTRACT
- (L) DETECTABLE WARNING PAVEMENT
- (M) EXISTING OXYGEN TANK STRUCTURAL PAD AND ENCLOSURE
- (N) ELECTRICAL DUCTBANK AND SWITCHGEAR, NOT IN THIS CONTRACT
- (O) STRUCTURAL TRANSFORMER PADS, PER STRUCTURAL AND ELECTRICAL PLANS, NOT IN THIS CONTRACT

TEMPORARY SIGNAGE:
 Duff at Green Arrow: Construction Deliveries Only
 11th and Duff at Blue Arrow: No Deliveries, Hospital Parking Only
 11th and Duff at Blue Arrow: Emergency Entrance
 Flagmen will be directing construction deliveries.

- (V) PAVEMENT MARKINGS, AREA STRIPED WITH 4" WIDE WHITE LINE, 2' CENTERS
- (W) ADA PARKING SPACE SYMBOL
- (X) THROUGH LANE-USE ARROW
- (Y) TURN LANE-USE ARROW
- (Z) UNIT PAVERS, NOT APPLICABLE ON THIS SHEET
- (AA) RETAINING WALL, SEE DETAIL AND GRADING PLAN
- (BB) PCC CURB STOP, NOT APPLICABLE ON THIS SHEET
- (CC) SECURITY BOLLARD, SEE DETAIL

Emergency/Ambulance Entrance (arrow up and right)
 Main Entrance (arrow up)
 Valet (arrow up)
 Medical Arts Parking (arrow up)
 Parking and Exit (arrow up)
 West Entrance (arrow up)

- (DD) 24" WIDE WHITE STOP BARS (PAVEMENT MARKINGS, NOT APPLICABLE ON THIS SHEET)
- (EE) FLAG POLE, SEE DETAIL, NOT APPLICABLE ON THIS SHEET

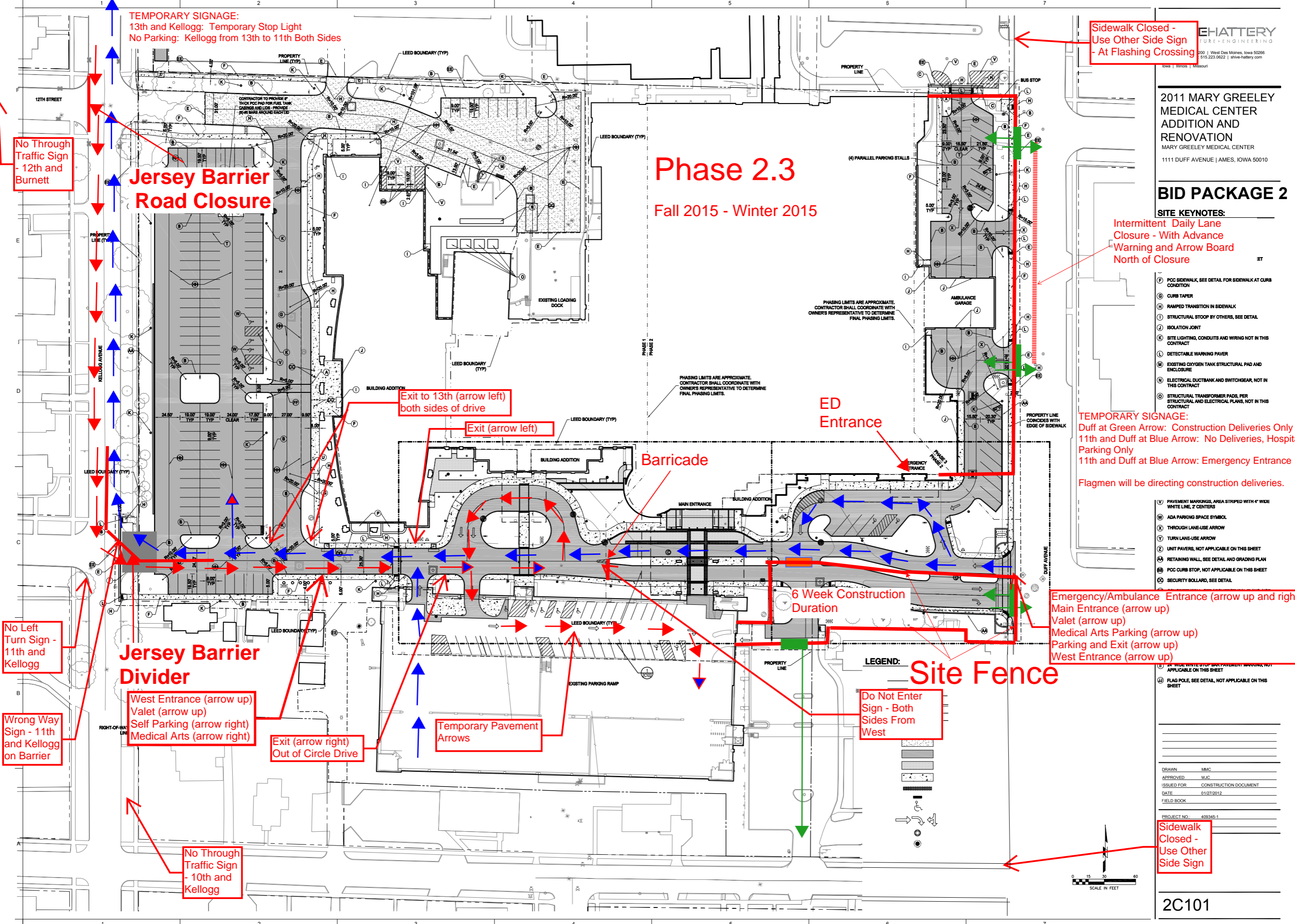
DRAWN: MMC
 APPROVED: MJC
 ISSUED FOR: CONSTRUCTION DOCUMENT
 DATE: 01/27/2012
 FIELD BOOK:

PROJECT NO.: 409345-1

Sidewalk Closed - Use Other Side Sign

Phase 2.3

Fall 2015 - Winter 2015



No Through Traffic Sign - 12th and Burnett

No Left Turn Sign - 11th and Kellogg

Wrong Way Sign - 11th and Kellogg on Barrier

No Through Traffic Sign - 10th and Kellogg

Jersey Barrier Road Closure

Jersey Barrier Divider

West Entrance (arrow up)
 Valet (arrow up)
 Self Parking (arrow right)
 Medical Arts (arrow right)

Exit (arrow right)
 Out of Circle Drive

Temporary Pavement Arrows

Exit to 13th (arrow left)
 both sides of drive

Exit (arrow left)

Barricade

ED Entrance

6 Week Construction Duration

Site Fence

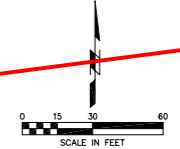
Do Not Enter Sign - Both Sides From West

Sidewalk Closed - Use Other Side Sign - At Flashing Crossing

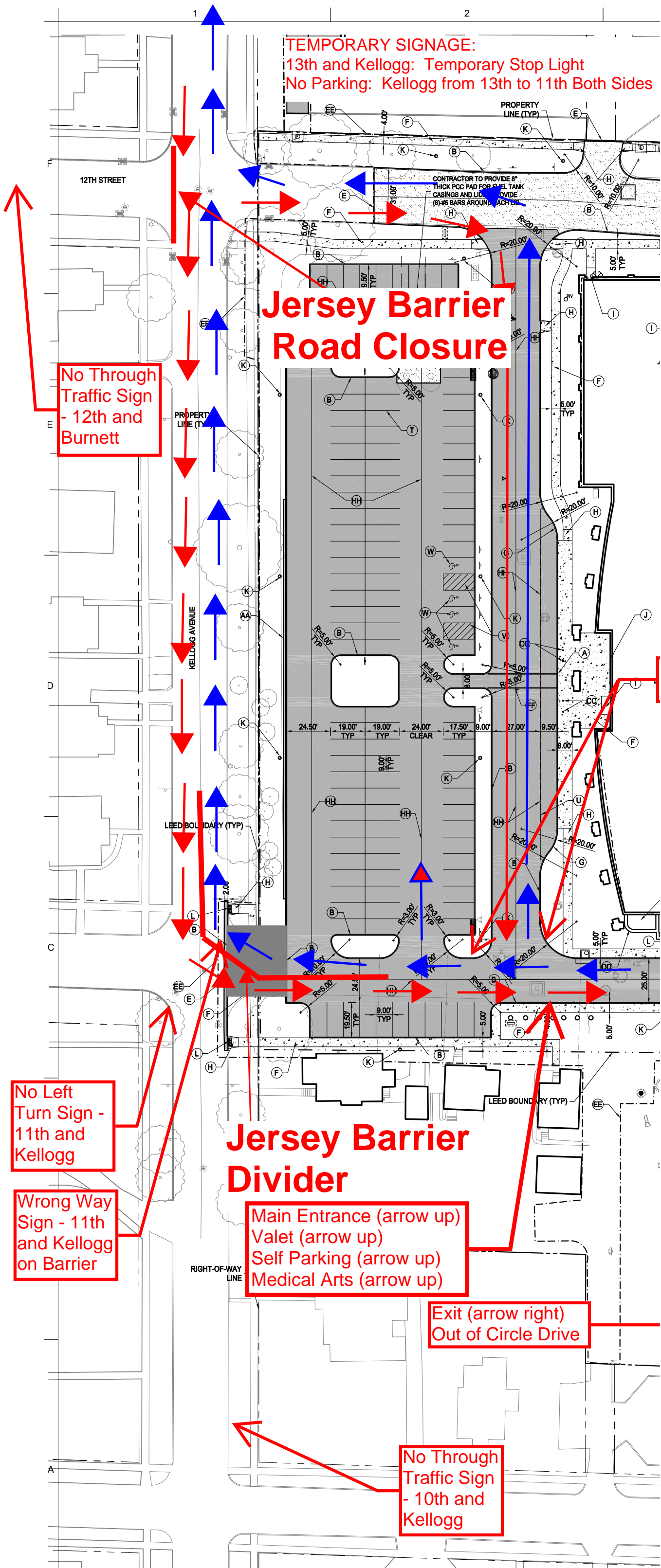
Intermittent Daily Lane Closure - With Advance Warning and Arrow Board North of Closure

PHASING LIMITS ARE APPROXIMATE. CONTRACTOR SHALL COORDINATE WITH OWNER'S REPRESENTATIVE TO DETERMINE FINAL PHASING LIMITS.

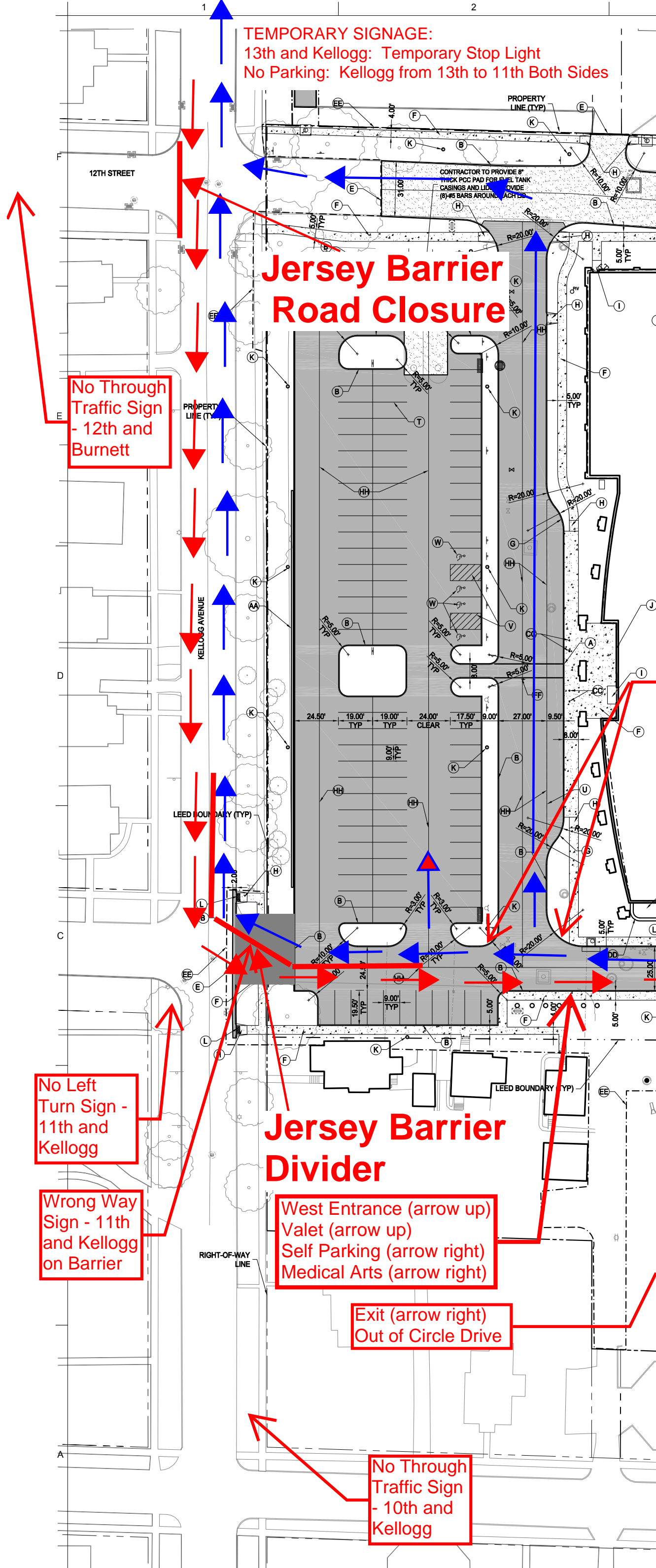
PHASING LIMITS ARE APPROXIMATE. CONTRACTOR SHALL COORDINATE WITH OWNER'S REPRESENTATIVE TO DETERMINE FINAL PHASING LIMITS.



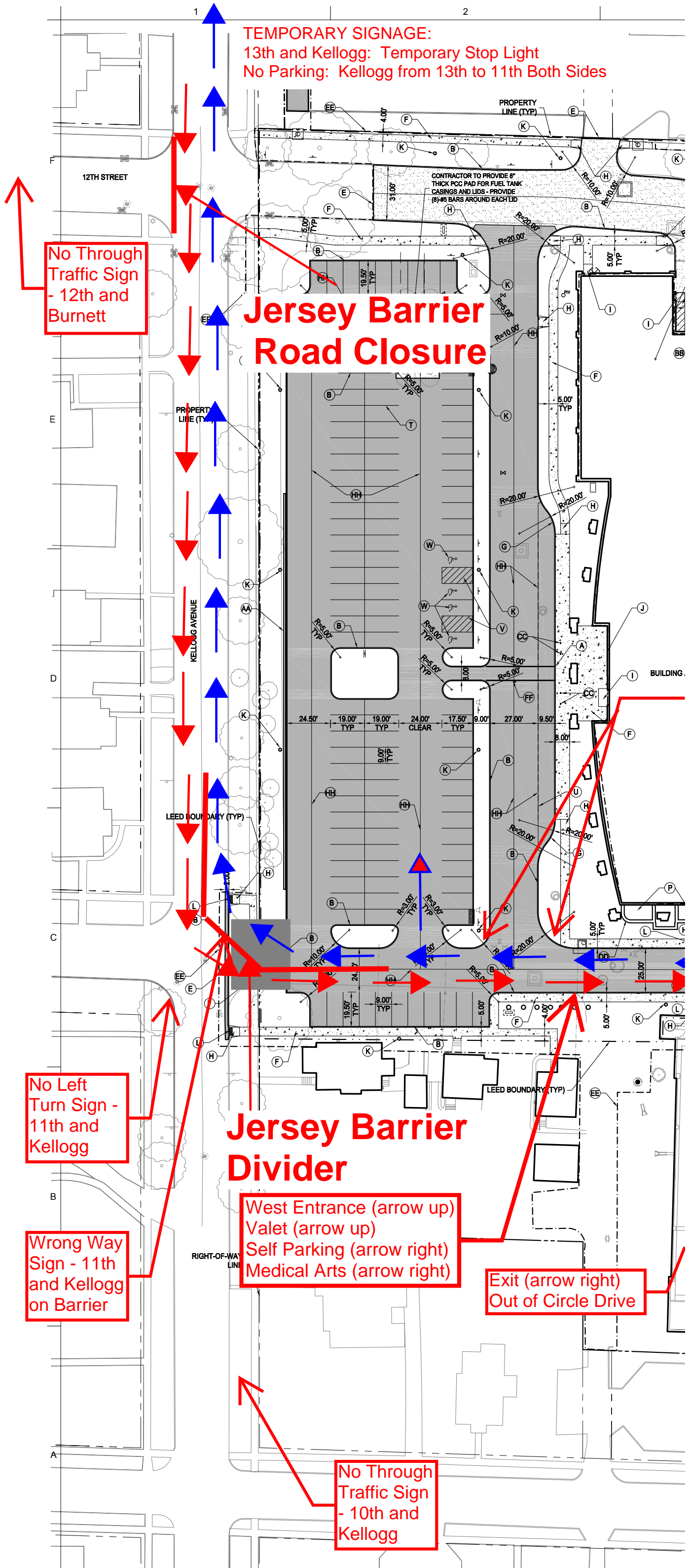
Kellogg Access Plan Phase 2.1 Enlarged



Kellogg Access Plan Phase 2.2 Enlarged



Kellogg Access Plan Phase 2.3 Enlarged



TEMPORARY SIGNAGE:
13th and Kellogg: Temporary Stop Light
No Parking: Kellogg from 13th to 11th Both Sides

No Through
Traffic Sign
- 12th and
Burnett

Jersey Barrier
Road Closure

No Left
Turn Sign -
11th and
Kellogg

Wrong Way
Sign - 11th
and Kellogg
on Barrier

Jersey Barrier
Divider

West Entrance (arrow up)
Valet (arrow up)
Self Parking (arrow right)
Medical Arts (arrow right)

Exit (arrow right)
Out of Circle Drive

No Through
Traffic Sign
- 10th and
Kellogg