



Ames Public Library Expansion Project

Great Things Are Happening

What is the goal of the expansion project?

Over the years, the role of the public library has become that of a community gathering space. A library is a place where people of all ages, beliefs, and backgrounds can expand their minds and enrich their lives, whether they are reading a book with a child, applying for a job online, enjoying a cultural presentation, or any of the myriad activities found in modern libraries. As one of the most active libraries in the nation, Ames Public Library has pushed its building to the limit to fulfill that role. The goal of this project is to renovate existing spaces for greater flexibility while adding room for the materials, seating, and gathering areas Ames demands.

Why do we need to expand our library?

- Ames Public Library is simply running out of space. The library building was never designed to handle the huge volume of activity we now experience—over twice as much as in 1984, which is the last time the library was expanded.
- Library service has changed since the 1984 addition to the library. Internet computer stations, self-checkout machines, and Wi-Fi hotspots were never envisioned during the design of the last addition. Library use as a meeting area and community gathering point has increased the need for areas beyond the shelves.
- A library should be a place of safety and security. The three additions to the library have created a disjointed floor plan that is difficult to staff and supervise.
- Meeting room space is at a premium. We are unable to meet the demands of the many community groups that need space for meetings, presentations, workshops, and more.
- The youth services area of the library is insufficient for young people seeking room to study, tables to work collaboratively on homework, or simply a quiet place to read and discover.

Has the Library determined how much an expansion project will cost?

The Library Board, with approval from the Ames City Council, contracted with a fundraising consulting firm to assess how and how much money can reasonably be raised for the project. The conclusion was that \$20 million is the upper limit for an expansion project. We are seeking \$5 million from gifts, grants, and donations and \$15 million from bonds to be voted upon in November 2011.

How will a \$15 million bond impact taxpayers?

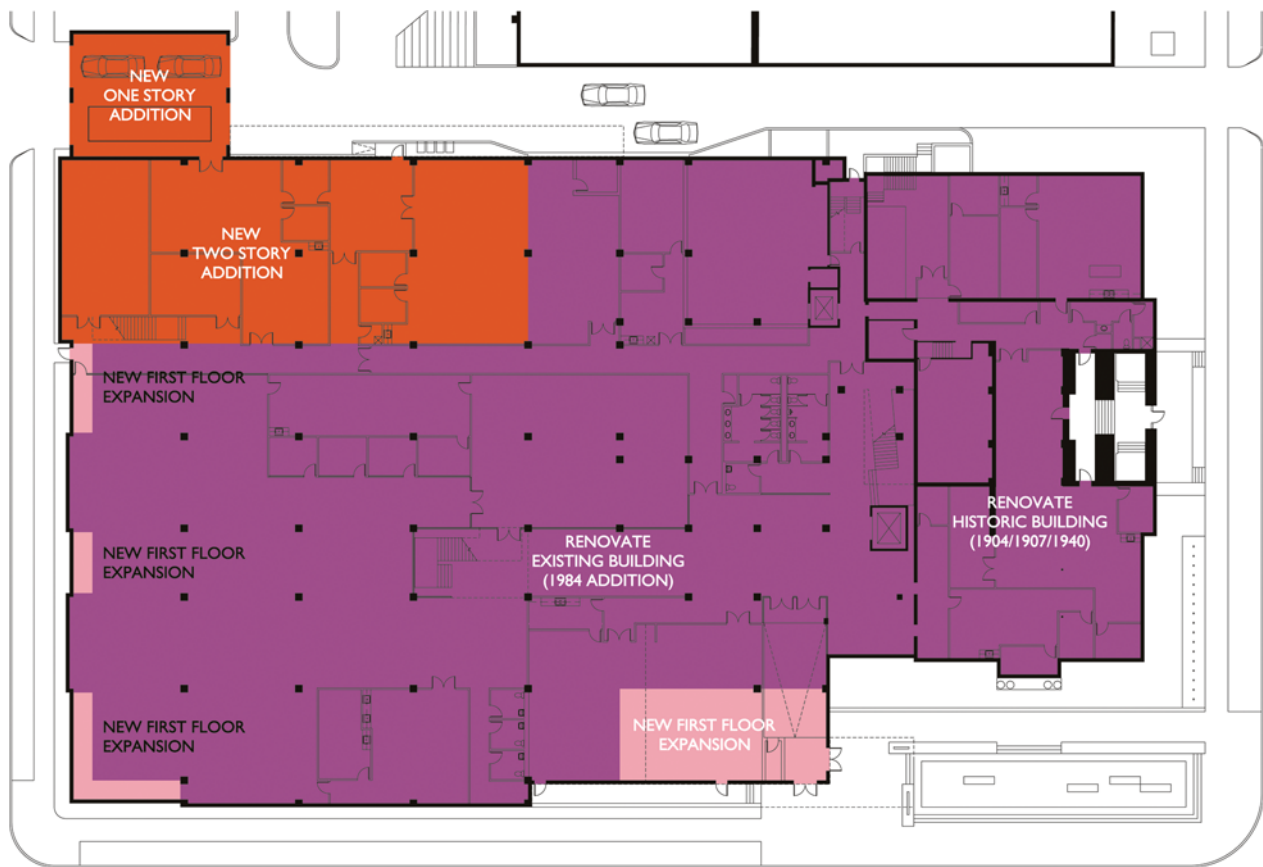
Under the prevailing interest rates, a \$15 million bond would increase property taxes on a \$100,000 home less than \$30 per year.

How can we help make this project a success?

Philanthropic contributions by individuals and corporations will demonstrate community support for this project. Major donors will have “naming” opportunities in many different areas throughout the library building. Call (515) 239-5630 for more details.



Ames Public Library: Proposed Expansion & Renovation



0 8' 16' 32' N▶

FIRST FLOOR EXPANSION DIAGRAM

Ames Public Library
March 17, 2011

Purple

Areas To Be Renovated: 47,412 sq. ft. Includes removal of walls, construction of walls, utilities, infrastructure, etc. There will also be restoration work of the historic finishes and woodwork in the 1904, 1907, and 1940 sections of the Library. Represents 61.2% of the project.

Pink

First Floor Expansion: 1,927 sq. ft. Includes building out from the existing structure in available areas, increasing square footage and allowing more natural light for energy savings. Represents 2.5% of the project.

Dark Orange/Red

New Addition: 13,440 sq. ft. This is a completely new two-story section built upon the existing rain garden along with a new Bookmobile garage. Represents 17.4% of the project.

White

Stairwell at the North End of the Historic Section: 724 sq. ft. This is the only area that will remain essentially “as is.” Represents less than 1% of the project.

Ames Public Library: Proposed Expansion & Renovation



SECOND FLOOR EXPANSION DIAGRAM

Ames Public Library
March 17, 2011

Purple

Areas To Be Renovated: 47,412 sq. ft. Includes removal of walls, construction of walls, utilities, infrastructure, etc. There will also be restoration work of the historic finishes and woodwork in the 1904, 1907, and 1940 sections of the Library. Represents 61.2% of the project.

Dark Orange/Red

New Addition: 13,440 sq. ft. This is a completely new two-story section built upon the existing rain garden along with a new Bookmobile garage. Represents 17.4% of the project.

Light Orange/Yellow

Planned Second Story Expansion: 7,435 sq. ft. A second level will be build upon the sections of the current building that were engineered to accept it. Represents 9.6% of the project.

Blue

Infill Floor Openings: 5,309 sq. ft. These are the tall-ceilinged open areas, including the clerestory above the Library's center lounge and the Farwell T. Brown Auditorium. These areas will be come two stories. Represents 6.9% of the project.

Green

Second Floor Expansion: 1,208 sq. ft. Interior space built from a roof deck. Represents 1.6% of the project.

White

Stairwell at the North End of the Historic Section: 724 sq. ft. This is the only area that will remain essentially "as is." Represents less than 1% of the project.



FIRST FLOOR PLAN

Ames Public Library
February 17, 2011



SECOND FLOOR PLAN

Ames Public Library
February 17, 2011