

**COUNCIL ACTION FORM**

**SUBJECT: 2008 RESOURCE RECOVERY ANNUAL REPORT**

**BACKGROUND:**

A calendar year report of revenues and expenditures is prepared annually for the Resource Recovery System. Based on this annual report, and in accordance with existing contracts, billings are prepared for the participating communities and Iowa State University.

The 2008 Resource Recovery Annual Report shows a total of 57,470 tons of Municipal Solid Waste (MSW) was received at the plant during the year. Of that amount, 4,094 tons (or 7.1%) were from Iowa State University. Revenues from all sources totaled \$4,633,150, and total expenses totaled \$3,725,904. This resulted in net income of \$907,246 for 2008.

Of the 57,470 tons of MSW accepted at the plant during the year, 52,716 tons (92%) were processed. The remaining 8% was sent to the Boone County Landfill. Of the 52,716 tons that were processed, 36,060 tons (68%) became Refuse Derived Fuel (RDF) and 5% was recovered from glass and metals. The per capita fee for 2008 remained at \$10.50, as it will for 2009. The tipping fee for haulers will also remain at \$52.75 per ton.

**ALTERNATIVES:**

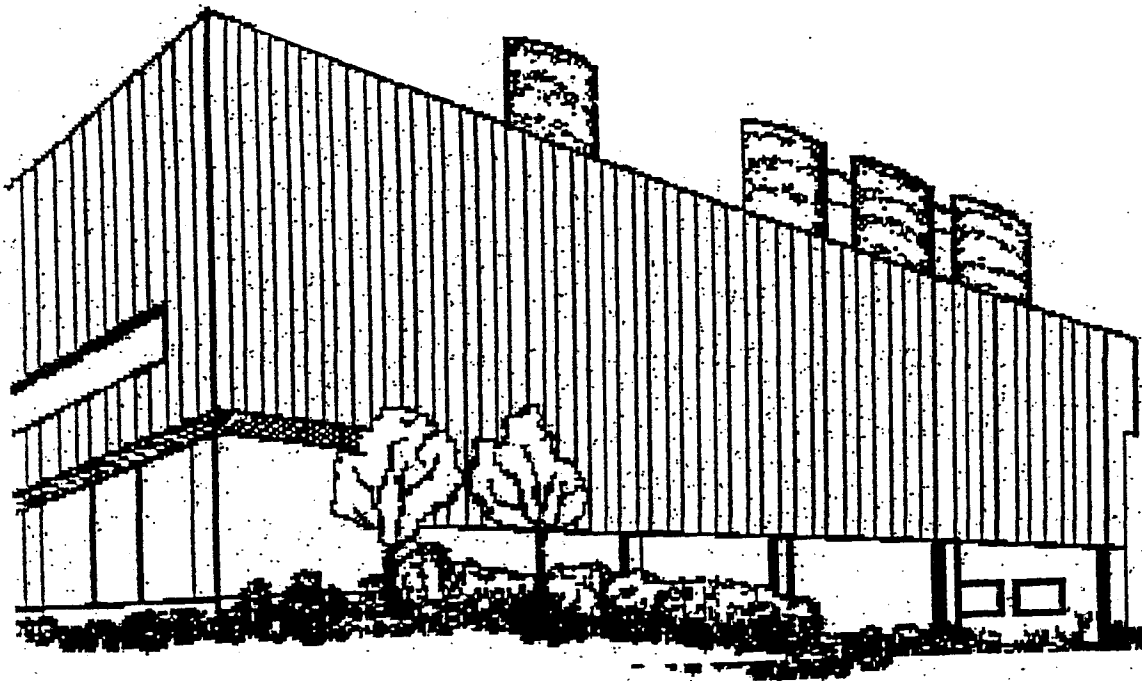
1. Accept the 2008 Resource Recovery Annual Report as presented, and authorize staff to distribute the report and to bill the participating communities and Iowa State University.
2. Request further information from staff.

**MANAGER'S RECOMMENDED ACTION:**

It is the recommendation of the City Manager that the City Council adopt Alternative No.1, thereby accepting the 2008 Resource Recovery Annual Report as presented, and authorizing staff to distribute the report and to bill the participating communities and Iowa State University.

# **ARNOLD O. CHANTLAND RESOURCE RECOVERY SYSTEM**

# **2008**



*CITY OF AMES, IOWA*





## Public Works Department

515 Clark Avenue, Ames, Iowa 50010  
Phone 515-239-5160 ♦ Fax 515-239-5404  
jjoiner@city.ames.ia.us

### 2008 Resource Recovery Annual Report

February 10, 2009

#### Resource Recovery System Members:

The Resource Recovery Plant continues to be one of the most successful methods of landfill diversion in the state of Iowa. Over 70% of the waste delivered to the plant for processing is recovered as metals for recycling, diverted to other recycling areas, or processed into Refuse Derived Fuel (RDF) that is used as an alternative fuel for generation of electricity at the City of Ames power plant. The remaining fraction, less than 30% of the waste stream, is delivered to the Boone County Landfill for disposal. This waste is delivered in a reduced size which results in saving landfill space.

Innovative ideas and improvements to the system are continuing.

- Staff researched and proposed a new drum magnet to replace the Dings 3 magnet, which will increase the amount of ferrous metal removed from the waste stream; installation is planned for spring 2009.
- A new non-ferrous recovery system will be installed in 2009 to capture brass, copper, aluminum, and stainless steel from the reject stream; this system is expected to net approximately 217 tons of non-ferrous metals per year.
- The City is negotiating with property owners directly east of the Resource Recovery Plant along Borne Avenue for purchase of three properties. This will enable enhancement of the staging and logistic operations of the plant. Future plans include a recyclables facility and an innovative storm water management feature to improve the quality of storm water run-off from the site.
- Container glass continues to be collected and recycled for use at the City of Ames Furman Aquatic Center. Collection has expanded to the communities of Nevada and Story City.

**The per capita rate will remain at \$10.50 for the 2009 calendar year.** The per capita charges, based on the certified 2000 census, are payable on July 1, 2009, and December 1, 2009. **The tipping fee rate will remain at \$52.75 per ton due to the continued financial strength of the system.**

The Resource Recovery System also continues to offer drop-off Household Hazardous Materials disposal on an appointment basis. This activity is coordinated through the Metro Waste Authority in the Des Moines area.

If you or any of your constituents have questions about this annual report or any of the activities of the Resource Recovery System, please do not hesitate to contact me or John Pohlman, Resource Recovery Superintendent.

Sincerely,

John C. Joiner, P.E.  
Public Works Director

**CITY OF AMES, IOWA**  
**RESOURCE RECOVERY SYSTEM**  
**ANNUAL BILLING**

**Participating Communities**  
**For Calendar Year 2008**

**REVENUES:**

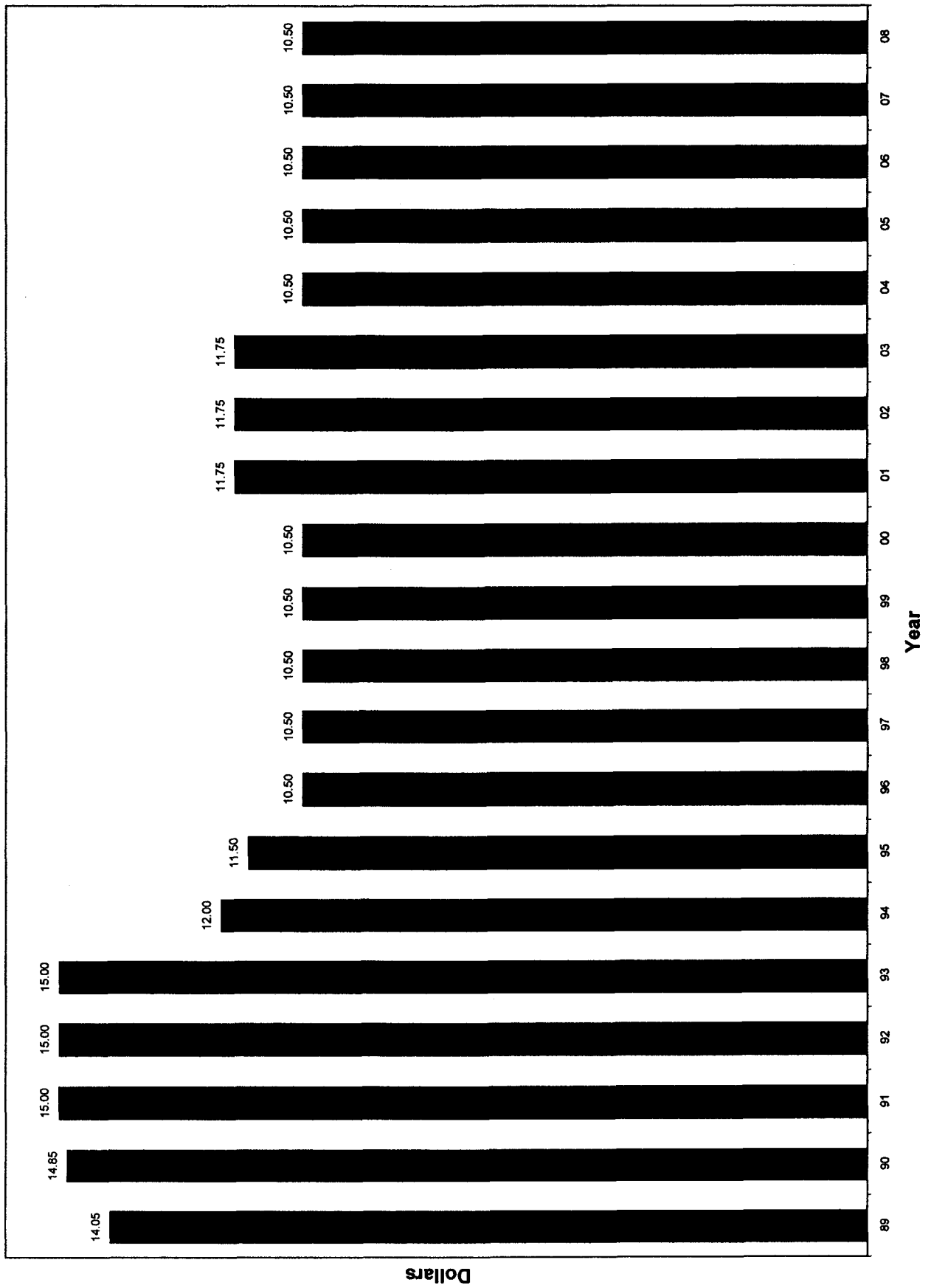
Per Capita	723,429	
Refuse sold for fuel	677,582	
Sale of metals	388,341	
Public fees	44,429	
Regular customers	2,483,207	
Reimbursements and refunds	3,502	
Other governmental units	20,257	
Out of County Revenue	40,362	
Scrap tires	1,689	
I.S.U. participation	184,469	
Interest Revenue	65,882	
		4,633,150

**EXPENSES:**

Operations	\$3,237,928	
Debt Service	487,975	
		<u>\$3,725,904</u>

Net Income                      907,246

# PER CAPITA



## MATERIALS, REVENUES & EXPENSES RESOURCE RECOVERY SYSTEM

YEAR	AVAILABLE	TO PROCESS	(%)	FERROUS	(%) <sup>1</sup>	RDF	(%) <sup>1</sup>	(%) <sup>2</sup>	REVENUES	EXPENSES	REVE/EXP	NET EXPENSE (\$/TON)
1989	51,617	48,400	94%	1,358	3%	37,611	78%	73%	912,251	1,727,815	53%	15.80
1990	51,140	46,321	91%	1,367	3%	34,289	74%	67%	904,469	1,783,597	51%	17.19
1991	48,759	44,966	92%	1,545	3%	33,177	74%	68%	1,004,752	1,921,590	52%	18.80
1992	45,420	42,126	93%	1,755	4%	32,292	77%	71%	1,238,445	2,056,239	60%	18.01
1993	47,832	45,913	96%	1,803	4%	35,120	76%	73%	1,738,610	2,329,256	75%	12.35
1994	47,869	45,540	95%	1,906	4%	34,280	75%	72%	1,937,432	2,197,280	88%	5.43
1995	28,117	28,059	100%	1,097	4%	20,386	73%	73%	1,372,600 *	2,109,276	65%	26.20
1996	28,484	28,452	100%	835	3%	18,875	66%	66%	2,237,072 **	2,628,208	85%	13.73
1997	45,435	42,644	94%	1,464	3%	27,746	65%	61%	3,081,928	3,163,332	97%	1.79
1998	48,643	47,690	98%	1,903	4%	31,138	65%	64%	3,373,503	3,183,602	106%	(3.90)
1999	49,164	46,370	94%	1,654	4%	30,434	66%	62%	3,161,495	3,220,240	98%	1.19
2000	48,896	44,397	91%	1,401	3%	28,095	63%	57%	3,097,282	3,313,053	93%	4.41
2001	50,093	44,955	90%	1,104	2%	30,435	68%	61%	3,353,739	3,281,503	102%	(1.44)
2002	50,267	48,717	97%	1,258	3%	35,147	72%	70%	3,731,348	3,110,513	120%	(12.35)
2003	51,906	47,436	91%	1,678	4%	33,146	70%	64%	3,803,639	3,527,346	108%	(5.32)
2004	53,788	51,026	95%	2,332	5%	34,334	67%	64%	4,017,107	3,462,794	116%	(10.31)
2005	54,493	53,468	98%	2,250	4%	32,621	61%	60%	4,285,110	3,716,566	115%	(10.43)
2006	55,500	50,989	92%	2,229	4%	30,180	59%	54%	4,250,337 ***	4,449,985	96%	3.60
2007	57,333	52,820	92%	2,102	4%	34,182	65%	60%	4,392,686	4,531,663	97%	2.42
2008	57,470	52,716	92%	2,068	4%	36,060	68%	63%	4,633,150	3,725,904	124%	(15.79)
<b>20 YEAR TOTAL</b>	<b>972,226</b>	<b>913,005</b>	<b>94%</b>	<b>33,109</b>	<b>4%</b>	<b>629,548</b>	<b>65%</b>	<b>65%</b>	<b>\$56,526,954</b>	<b>\$59,439,762</b>	<b>95%</b>	<b>\$3.00</b>

<sup>1</sup>Denotes percent of processed material

<sup>2</sup>Denotes percent of tons available

\* Closed for renovation for part of the year (1995, 1996)

\*\* Beginning in 1996, per capita is included as revenue

\*\*\*Closed for one month for Air Knife Installation

### TWENTY YEAR AVERAGES

\$/Incoming Ton Revenue .....	\$58.14
\$/Incoming Ton Expense, Net .....	\$3.00
Percent Recovery - R.D.F. ....	65%
Percent Recovery - Ferrous .....	4%

# CITY OF AMES, IOWA

## POPULATION - PERCENTAGES - CHARGES

Annual Billing - Calendar 2006

Per Capita - \$10.50

	<u>POPULATION</u> <sup>1</sup>	<u>PERCENT OF POPULATION</u>	<u>TOTAL</u>
Ames	40,331 <sup>2</sup>	58.54%	\$423,475.50
Story County	9,019	13.09%	\$94,699.50
Nevada	6,658	9.66%	\$69,909.00
Story City	3,228	4.69%	\$33,894.00
Huxley	2,316	3.36%	\$24,318.00
Roland	1,324	1.91%	\$13,902.00
Slater	1,306	1.90%	\$13,713.00
Gilbert	987	1.43%	\$10,363.50
Colo	868	1.26%	\$9,114.00
Cambridge	819	1.19%	\$8,599.50
Maxwell	807	1.17%	\$8,473.50
Zearing	617	0.90%	\$6,478.50
McCallsburg	318	0.46%	\$3,339.00
Kelley	300	0.44%	\$3,150.00
<b>TOTALS</b>	<b>68,898</b>	<b>100.00%</b>	<b>\$723,429.00</b>

<sup>1</sup> Based on 2000 U.S. Census

<sup>2</sup> 50,731 minus I.S.U. 10,400

# **APPENDIX**



**CITY OF AMES, IOWA  
MONTHLY REFUSE VOLUMES - 2008**

	TOTAL REFUSE RECEIVED (Tons)	TONS RECEIVED FROM <u>I.S.U.</u>	TONS RECEIVED FROM <u>N.A.D.C.</u>	TONS RECEIVED FROM <u>I.D.O.T.</u>	TONS RECEIVED FROM <u>OTHER</u>
January	4,569	340	10	16	4,203
February	3,985	376	9	15	3,585
March	4,552	319	12	23	4,198
April	5,170	331	10	13	4,816
May	5,194	393	6	13	4,782
June	5,146	246	12	11	4,877
July	5,525	306	14	13	5,192
August	5,019	338	9	10	4,662
September	4,851	350	9	11	4,481
October	4,885	454	11	12	4,408
November	4,213	293	8	9	3,903
December	4,361	348	11	14	3,988
<b>TOTAL</b>	<b>57,470</b>	<b>4,094</b>	<b>121</b>	<b>160</b>	<b>53,095</b>
<b>% OF TOTAL</b>	<b>100.0%</b>	<b>7.1%</b>	<b>0.2%</b>	<b>0.3%</b>	<b>92.4%</b>

**CITY OF AMES, IOWA  
RESOURCE RECOVERY PLANT VOLUMES  
12/31/2008**

<i>CLASS</i>	<i>2008 TRIPS</i>	<i>2008 WEIGHT</i>	<i>PERCENT OF TOTAL WEIGHT</i>
Non-Scale Refuse (Car line)	3,922	1,101	1.9%
Commercial Haulers	9,795	46,913	81.6%
Private Industry/Contractors	563	903	1.6%
City of Ames	58	43	0.1%
Iowa State University	990	4,094	7.1%
Iowa Dept of Transportation	342	160	0.3%
U S D A Lab	101	121	0.2%
Directly to Boone during downtime	786	4,135	7.2%
<b>TOTALS</b>	<b>16,557</b>	<b>57,470</b>	<b>100.0%</b>

# CITY OF AMES, IOWA

## RESOURCE RECOVERY SYSTEM FEE SCHEDULE

YEAR	TIPPING FEE	CARLINE	
		CARS	PICKUPS
2000/01	\$45.00/TON	\$7.00	\$19.00
2001/02	\$45.00/TON	\$7.00	\$19.00
2002/03	\$52.75/TON	\$8.00	\$22.00
2003/04	\$52.75/TON	\$8.00	\$22.00
2004/05	\$52.75/TON	\$8.00	\$22.00
2005/06	\$52.75/TON	\$8.00	\$22.00
2006/07	\$52.75/TON	\$8.00	\$22.00
2007/08	\$52.75/TON	\$8.00	\$22.00
2008/09	\$52.75/TON	\$8.00	\$22.00
PROPOSED 2009/10	\$52.75/TON	\$8.00	\$22.00