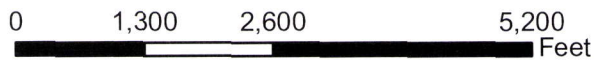
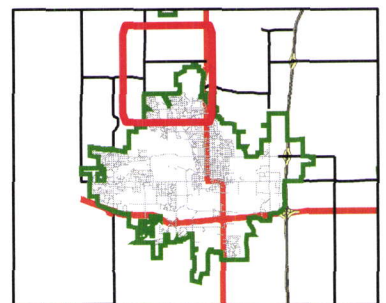


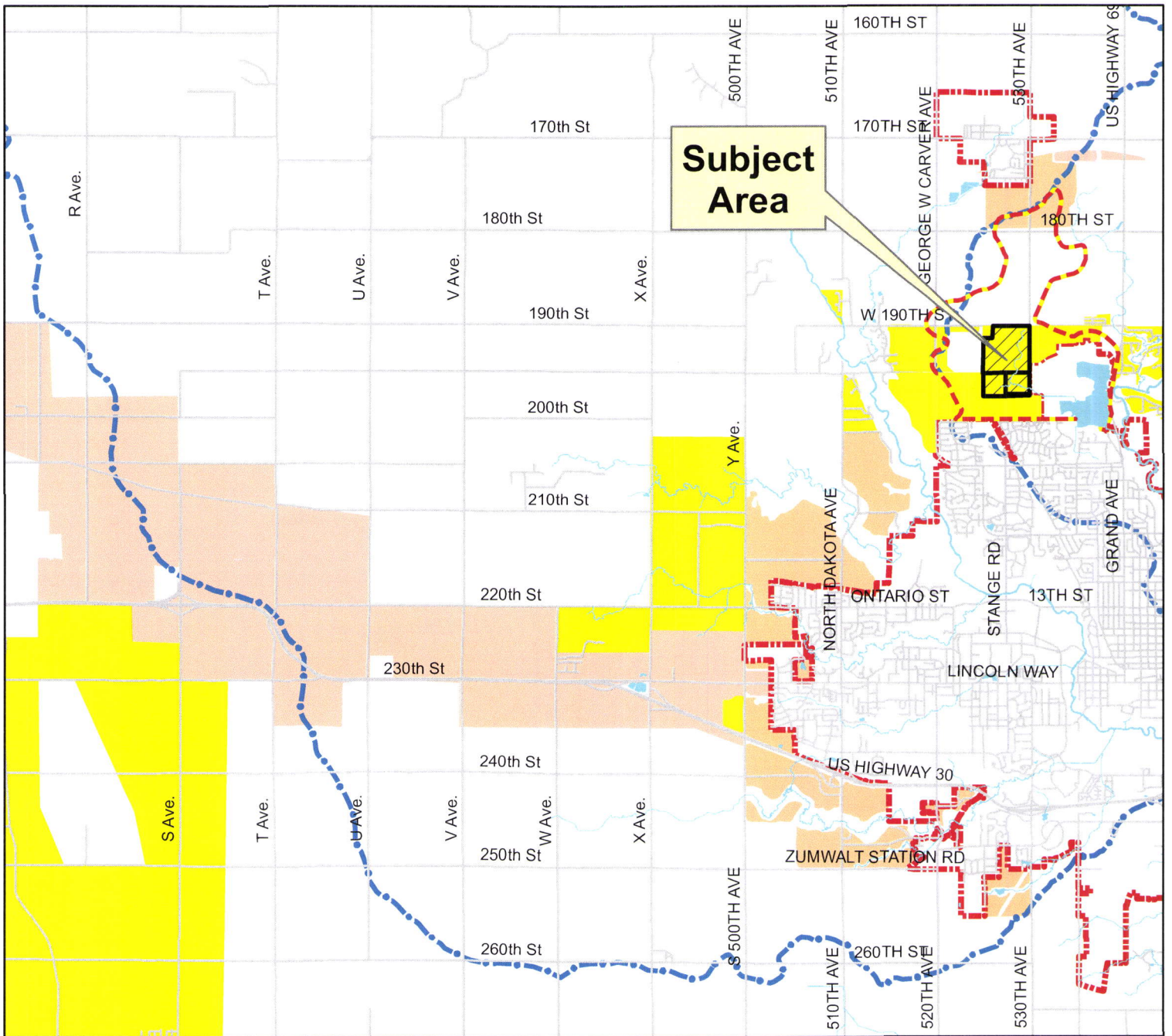
Location Map Rose Prairie Development



Legend







 Ames City Boundary

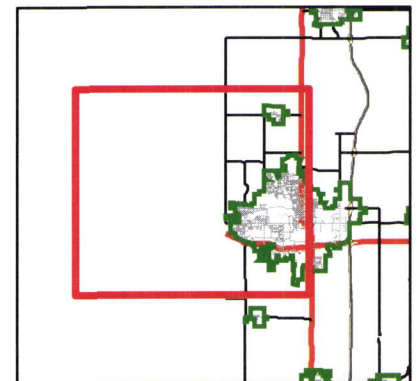
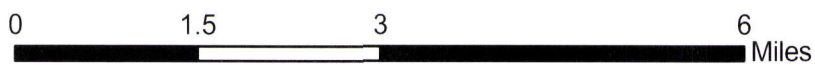


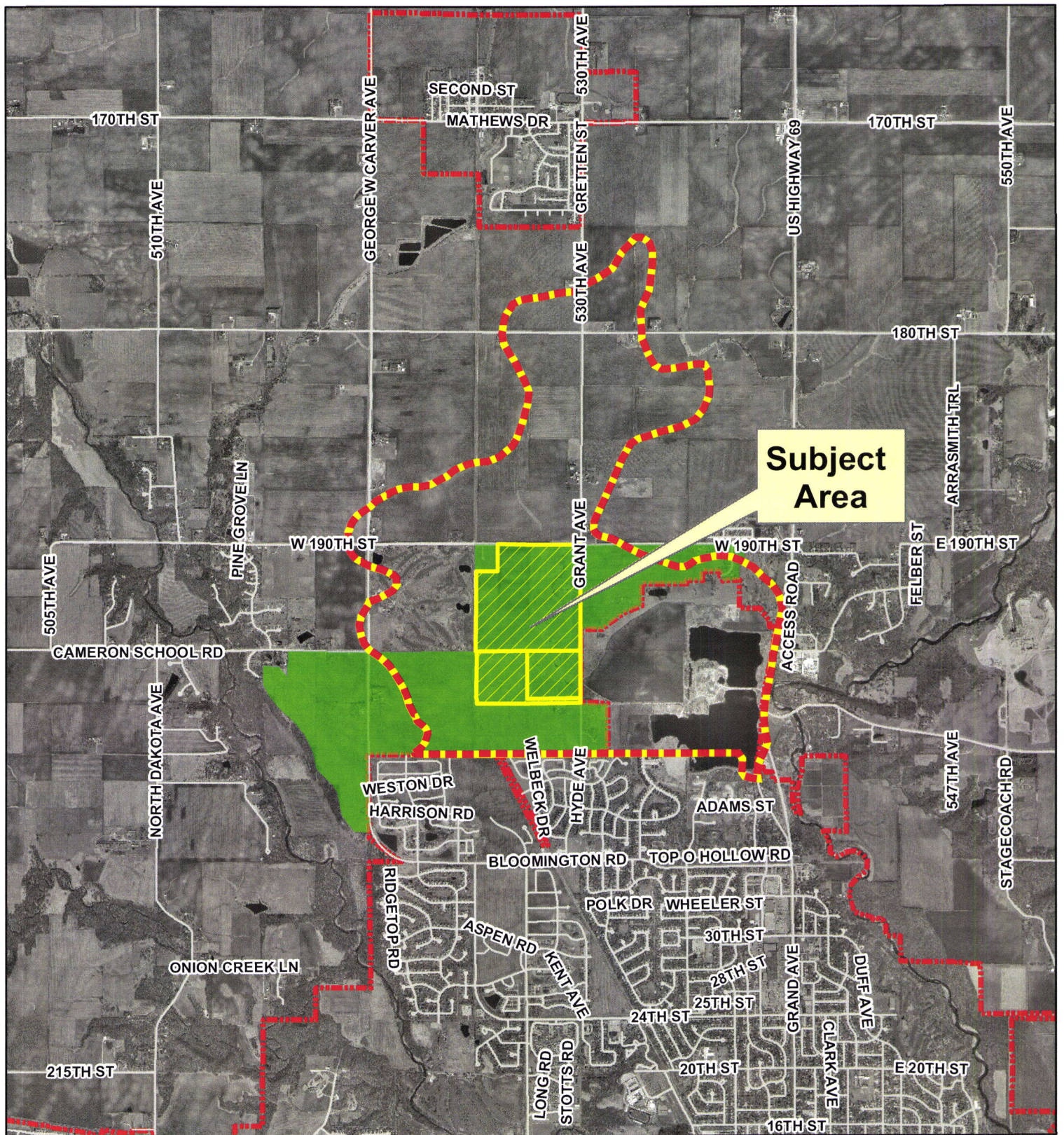


Planned Development in Squaw Creek Watershed Rose Prairie Development

Legend

-  Watershed Protection Area
-  City Boundary
-  Squaw Creek Watershed
-  Commercial/Industrial
-  Residential
-  Future Annexation






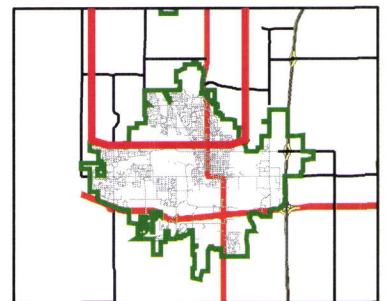
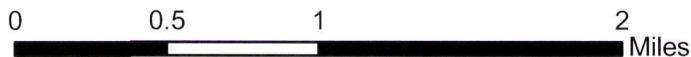


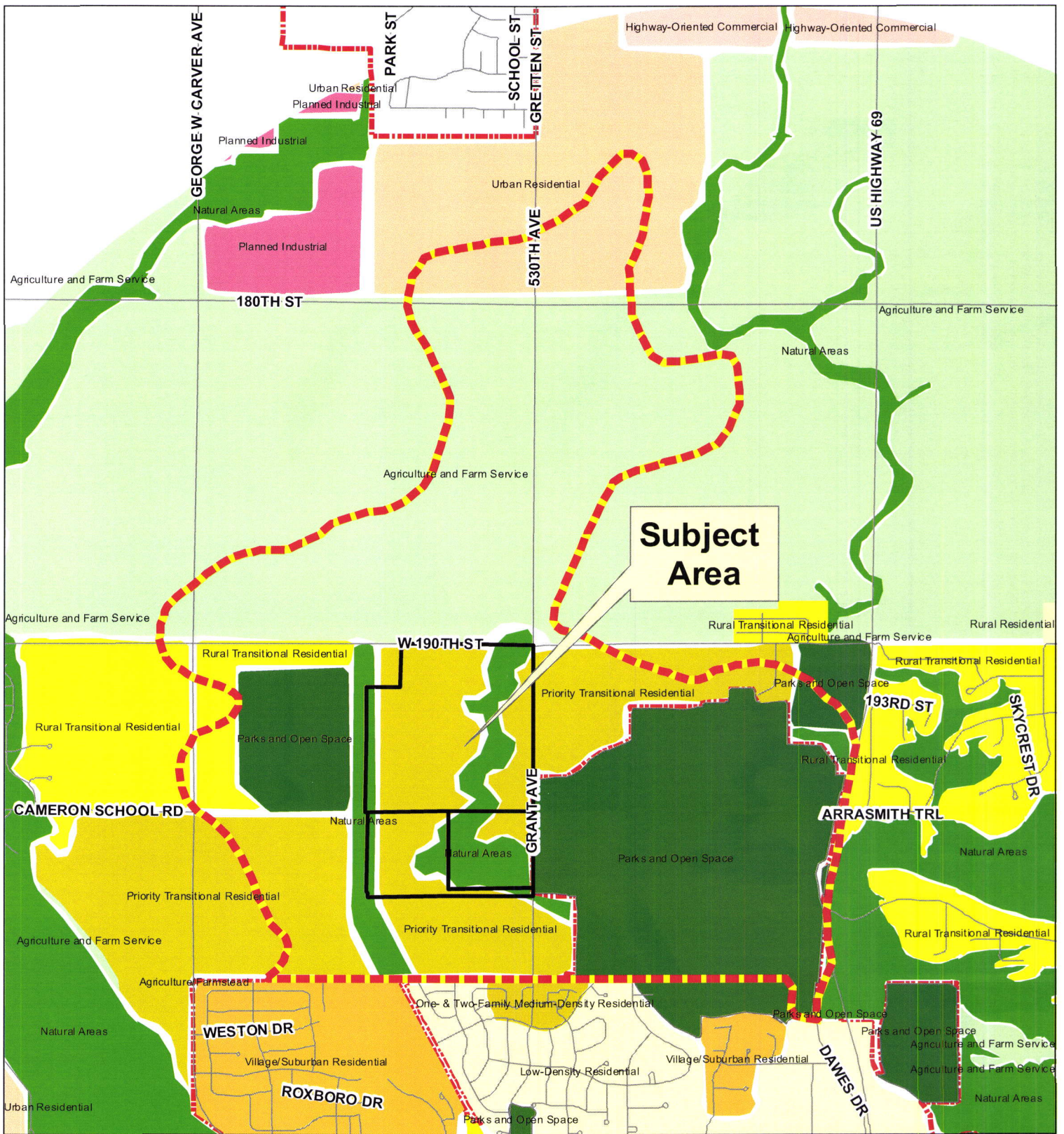
Priority Transitional Residential Land Use Rose Prairie Development



Legend

-  City Boundary
-  Watershed Protection Area
-  Priority Transitional Residential Land Use Area

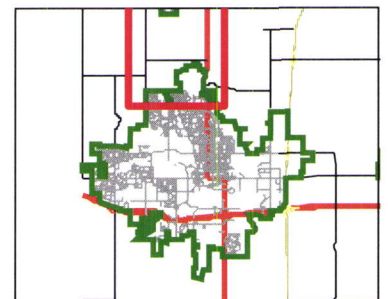


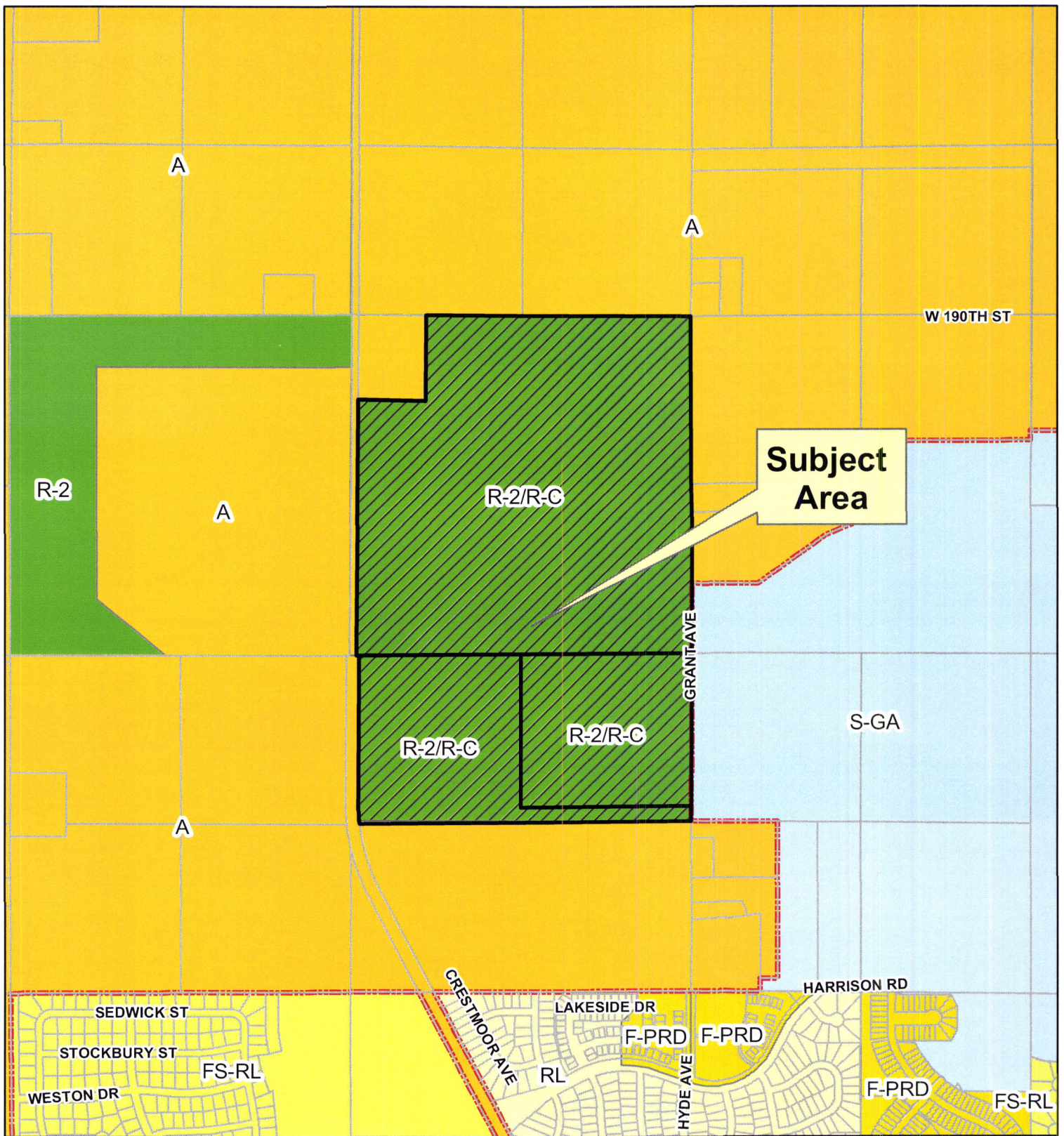


Land Use Map Rose Prairie Development



0 1,750 3,500 7,000 Feet





Zoning Map Rose Prairie Development

- "R-2/R-C" R-2 Residential with R-C Residential Conservation overlay
- "R-2" Residential
- "A" Agriculture
- "RL" Residential Low Density Zone
- "S-GA" Government/Airport District
- "FS-RL" Suburban Residential Zone Residential Low Density
- "F-PRD" Planned Residence District

Note: Zoning shown is pending on Preliminary Plat review.

