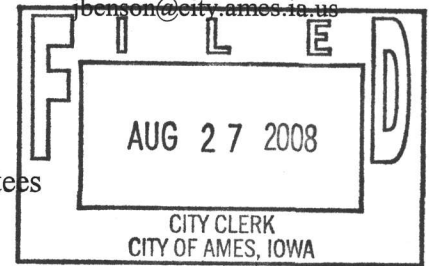




DEPARTMENT OF PLANNING & HOUSING

515 Clark Avenue, P.O. Box 811, Ames, IA 50010
Phone: 515-239-5400 ♦ Fax: 515-239-5404

jbenson@city.ames.ia.us



August 27, 2008

Story County Board of Supervisors
900 6th Street
Nevada, Iowa 50201

Grant Township Trustees
c/o John Clough
61526 260th Street
Nevada, Iowa 50201

Re: Consultation on Annexation to the City of Ames of property at 1820 South Dayton Avenue
Case # ANNEX-08-01

The City of Ames has received a Voluntary Annexation Petition for the property at 1820 South Dayton Avenue, property i.d. 10-18-100-150 (see location map, annexation map, and legal description enclosed). Iowa Code Section 368.7.b requires a consultation with the Board of Supervisor of the county in which the annexation area is located, and with the Township Trustees of the township in which the annexation area is located.

Therefore, the City of Ames invites you to the consultation for the annexation of 1820 South Dayton Avenue on September 9, 2008, at 7:00 p.m. in the Ames City Hall Council Chambers at 515 Clark in Ames. Iowa Code Section 368.7.b provides for you to “designate one of [your] members” to attend. The purpose of the consultation is to identify any issues that might be involved and for you to provide any relevant information. Within seven business days following the consultation, you may recommend modification to the proposed annexation and, within 30 days, you may pass a resolution supporting the annexation, recommending denial, or taking no position. Iowa Code Section 368.7.b contains other provisions about your actions related to annexations.

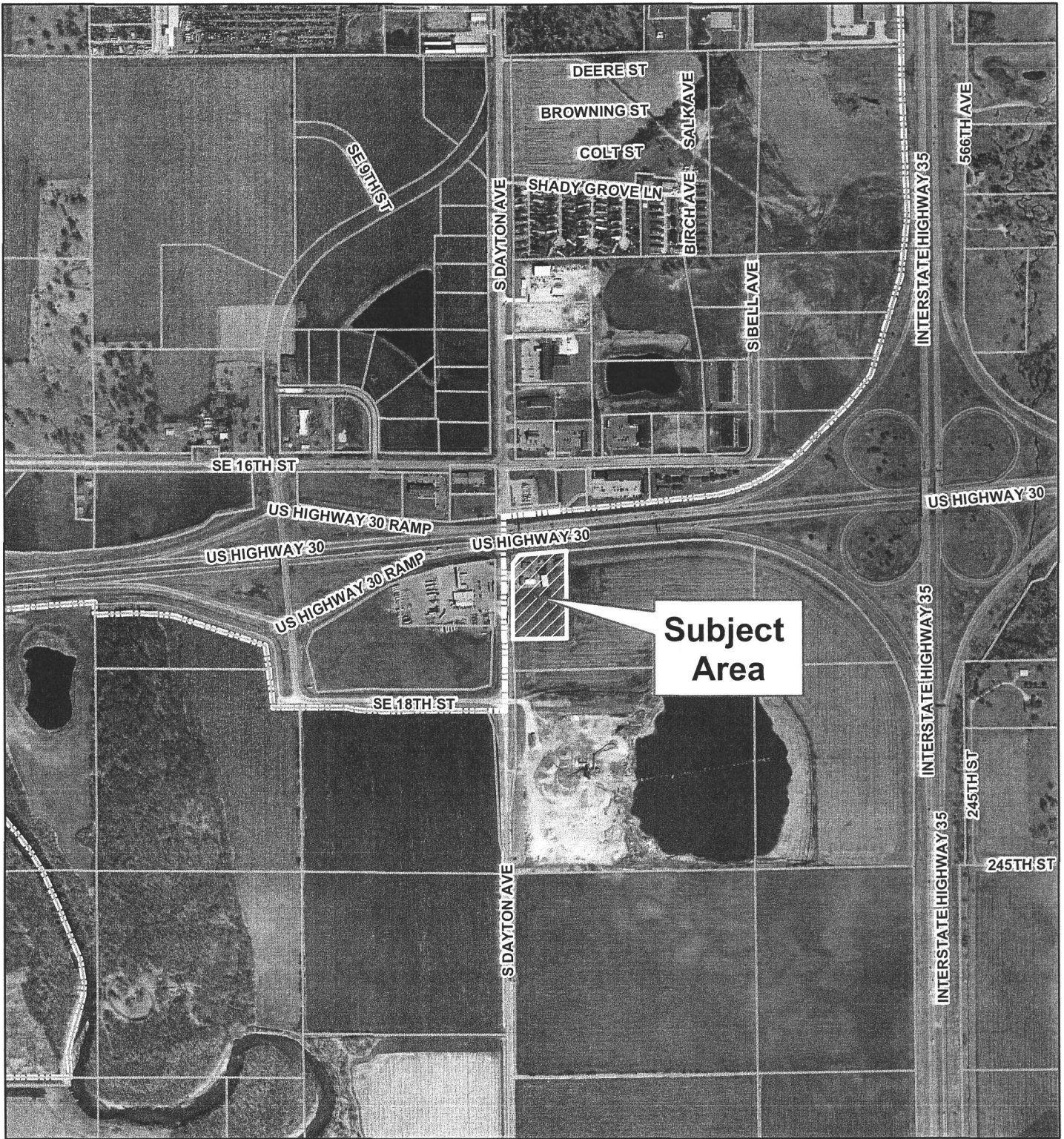
Please let us know by September 5, 2008, if you plan to be present at the consultation, if you will be represented and, if so, who that representative will be. Please also feel free to contact me with any questions or comments.

Sincerely,

Jeffrey Benson, AICP, ASLA
Planner

JB\chl
Enclosures

c: Diane Voss, City Clerk
Chuck Winkleblack, Hunziker & Associates



Location Map
1820 S. Dayton Ave.



0 550 1,100 2,200
Feet

