

COUNCIL ACTION FORM

SUBJECT: 2007 RESOURCE RECOVERY ANNUAL REPORT

BACKGROUND:

A calendar year report of revenues and expenditures is prepared annually for the Resource Recovery System. Based on the year 2007 Annual Report, and in accordance with existing contracts, billings are prepared for the participating communities and Iowa State University.

A total of 57,333 tons of Municipal Solid Waste (MSW) was received at the plant during 2007. Of that amount, 4,009 tons (or 7%) were from Iowa State University. Revenues from all sources totaled \$4,392,686, and total expenses were \$4,531,663. Consequently, there was a net loss of \$138,977 in 2007.

Of the 57,733 tons of MSW accepted at the plant during the year, 52,820 tons (92%) were processed. The remaining 8% was sent to the Boone County Landfill. Of the 52,820 processed tons, 34,182 tons (65%) became Refuse Derived Fuel (RDF). The per capita for 2007 remained at \$10.50, as it will for 2008. The tipping fee for haulers will also remain at \$52.75 per ton.

ALTERNATIVES:

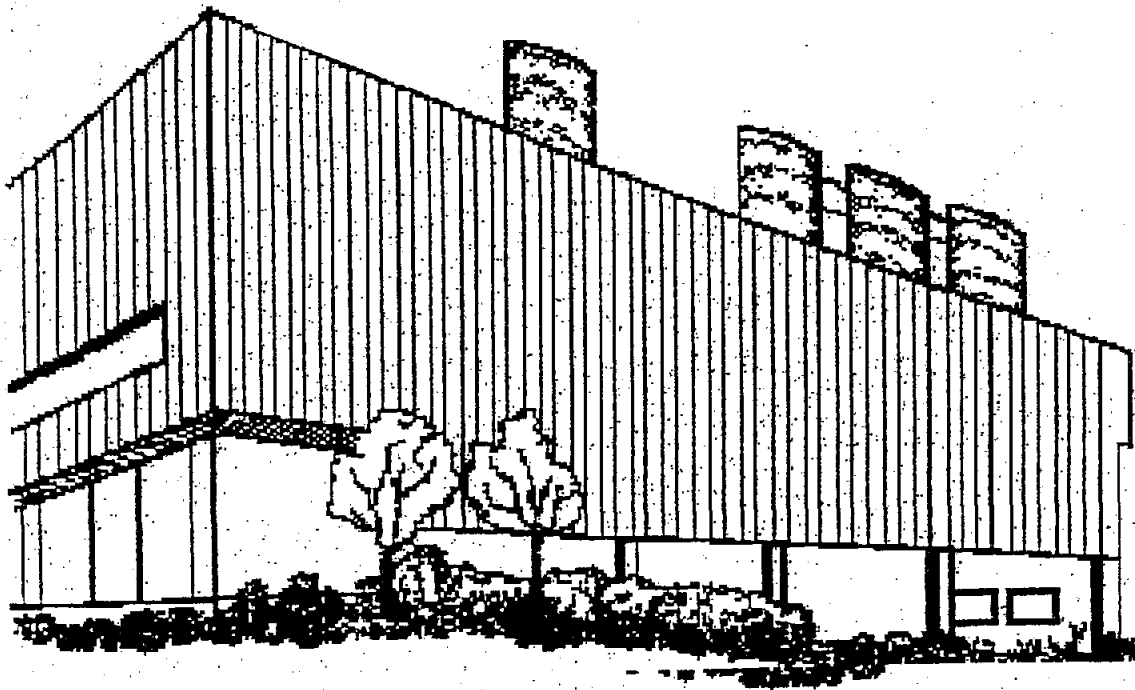
1. Accept the 2007 Resource Recovery Annual Report as presented, and authorize staff to distribute the report and to bill the participating communities and Iowa State University.
2. Request further information from staff.

MANAGER'S RECOMMENDED ACTION:

It is the recommendation of the City Manager that the City Council adopt Alternative No. 1, thereby accepting the 2007 Resource Recovery Annual Report as presented, and authorizing staff to distribute the report and to bill the participating communities and Iowa State University.

*ARNOLD O. CHANTLAND
RESOURCE RECOVERY SYSTEM*

2007



CITY OF AMES, IOWA



Public Works Department

515 Clark Avenue, Ames, Iowa 50010
Phone 515-239-5160 ♦ Fax 515-239-5404
jjoiner@city.ames.ia.us

2007 Resource Recovery Annual Report

February 4, 2008

Resource Recovery System Members:

The Resource Recovery System Several continued to promote innovative initiatives during 2007.

Promotion and opportunities to expand the glass recovery program were continued in 2007. This has resulted in **keeping approximately 110 tons of glass out of the waste stream**, reducing slag in the Electric Utility boilers, and reducing the cost of rejects to the landfill. Through on-going partnership with Iowa State University, the glass program has a greater presence on campus. A collection bin will be added at the Fareway store in Nevada. Opportunities to include other member communities may be evaluated during 2008.

Resource Recovery staff continue making efforts to connect with the residents of member communities. These activities include visiting City Council meetings at member communities, participating in elementary school science fairs, managing the yard waste contract, and promoting the glass-crushing program through various public outreach opportunities.

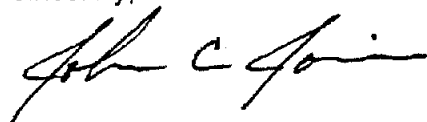
The joint cooperative agreement with the Boone County Landfill has been renewed for another five year period. We look forward to building upon this valued partnership. For 2007, approximately 65% of the materials were converted to refuse derived fuel (RDF) and diverted from the landfill. Metals processing removed an additional 4% of ferrous metal from the waste stream. Opportunities to implement a non-ferrous recovery system, through a SWAP partnership with the Iowa Department of Natural Resources, are being explored.

The per capita rate will remain at \$10.50 for the 2008 calendar year. The per capita charges, based on the certified 2000 census, are payable on July 1, 2008, and December 1, 2008. **The tipping fee rate will remain at \$52.75 per ton due to the continued financial strength of the system.**

The Resource Recovery System also continues to offer drop-off Household Hazardous Materials disposal on an appointment basis. This activity is coordinated through the Metro Waste Authority in the Des Moines area.

If you or any of your constituents have questions about this annual report or any of the activities of the Resource Recovery System, please do not hesitate to contact me or John Pohlman, Resource Recovery Superintendent.

Sincerely,



John C. Joiner, P.E.
Public Works Director

CITY OF AMES, IOWA
RESOURCE RECOVERY SYSTEM
ANNUAL BILLING

Participating Communities
For Calendar Year 2007

REVENUES:

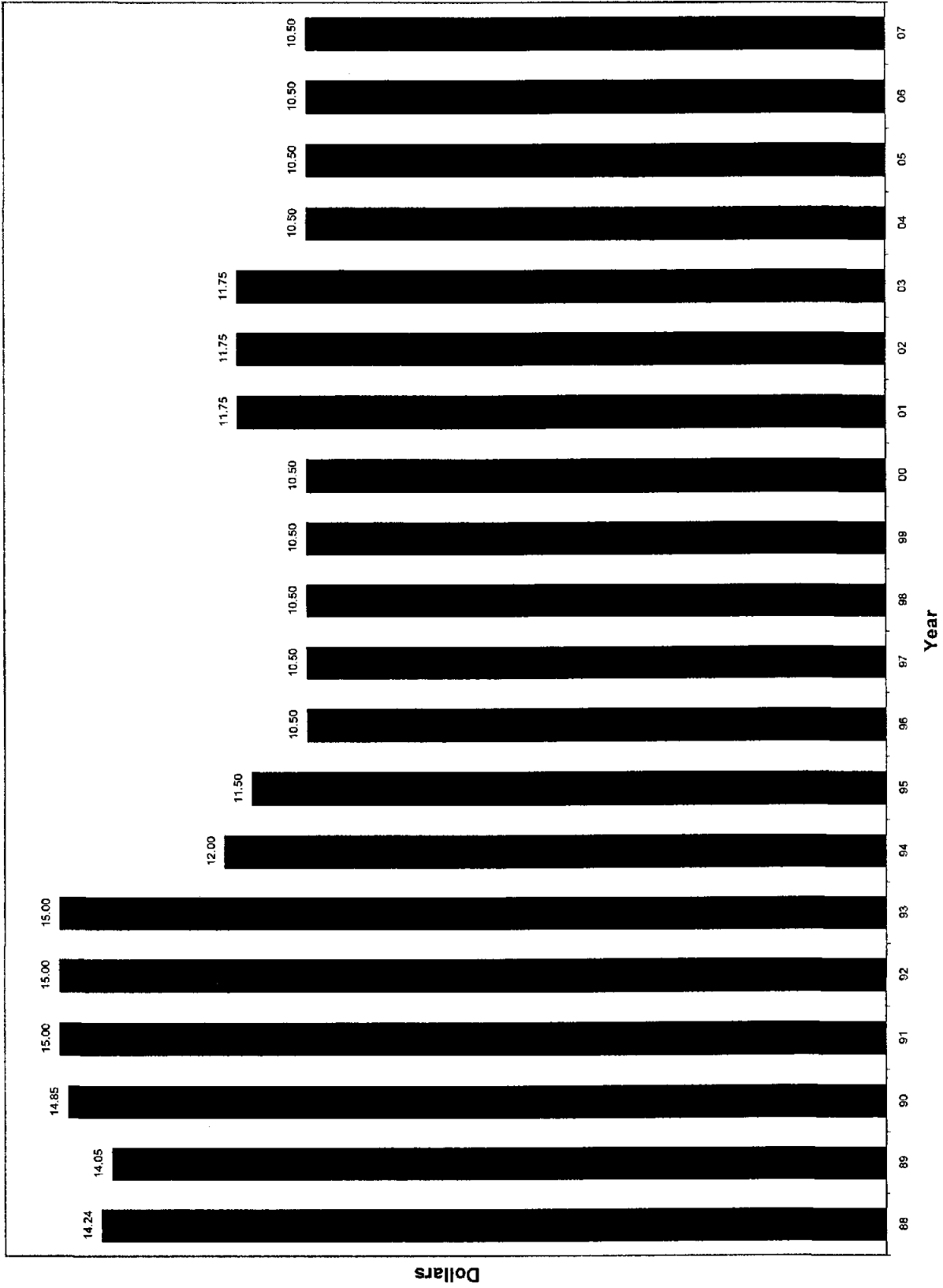
Per Capita	723,429	
Refuse sold for fuel	589,632	
Sale of metals	213,704	
Public fees	40,105	
Regular customers	2,488,348	
Reimbursements and refunds	22,606	
Other governmental units	17,413	
Scrap tires	1,964	
I.S.U. participation	256,537	
Interest Revenue	38,948	
		4,392,686

EXPENDITURES:

Operations	\$3,980,948	
Debt Service	550,715	
		<u>\$4,531,663</u>

Net loss: \$138,977

PER CAPITA



MATERIALS, REVENUES & EXPENSES RESOURCE RECOVERY SYSTEM

YEAR	AVAILABLE	TO PROCESS	(%)	FERROUS	(%) ¹	RDF	(%) ¹	(%) ²	REVENUES	EXPENSES	REVI/EXP	NET EXPENSE (\$/TON)
1988	49,416	44,840	91%	1,346	3%	34,311	77%	69%	818,932	1,663,814	49%	17.10
1989	51,617	48,400	94%	1,358	3%	37,611	78%	73%	912,251	1,727,815	53%	15.80
1990	51,140	46,321	91%	1,367	3%	34,289	74%	67%	904,469	1,783,597	51%	17.19
1991	48,759	44,966	92%	1,545	3%	33,177	74%	68%	1,004,752	1,921,590	52%	18.80
1992	45,420	42,126	93%	1,755	4%	32,292	77%	71%	1,238,445	2,056,239	60%	18.01
1993	47,832	45,913	96%	1,803	4%	35,120	76%	73%	1,738,610	2,329,256	75%	12.35
1994	47,869	45,540	95%	1,906	4%	34,280	75%	72%	1,937,432	2,197,280	88%	5.43
1995	28,117	28,059	100%	1,097	4%	20,386	73%	73%	1,372,600 *	2,109,276	65%	26.20
1996	28,484	28,452	100%	835	3%	18,875	66%	66%	2,237,072 **	2,628,208	85%	13.73
1997	45,435	42,644	94%	1,464	3%	27,746	65%	61%	3,081,928	3,163,332	97%	1.79
1998	48,643	47,690	98%	1,903	4%	31,138	65%	64%	3,373,503	3,183,602	106%	(3.90)
1999	49,164	46,370	94%	1,654	4%	30,434	66%	62%	3,161,495	3,220,240	98%	1.19
2000	48,896	44,397	91%	1,401	3%	28,095	63%	57%	3,097,282	3,313,053	93%	4.41
2001	50,093	44,955	90%	1,104	2%	30,435	68%	61%	3,353,739	3,281,503	102%	(1.44)
2002	50,267	48,717	97%	1,258	3%	35,147	72%	70%	3,731,348	3,110,513	120%	(12.35)
2003	51,906	47,436	91%	1,678	4%	33,146	70%	64%	3,803,639	3,527,346	108%	(5.32)
2004	53,788	51,026	95%	2,332	5%	34,334	67%	64%	4,017,107	3,462,794	116%	(10.31)
2005	54,493	53,468	98%	2,250	4%	32,621	61%	60%	4,285,110	3,716,566	115%	(10.43)
2006	55,500	50,989	92%	2,229	4%	30,180	59%	54%	4,250,337 ***	4,449,985	96%	3.60
2007	57,333	52,820	92%	2,102	4%	34,182	65%	60%	4,392,686	4,531,663	97%	2.42
20 YEAR TOTAL	964,172	905,129	94%	32,387	4%	627,799	69%	65%	\$52,712,737	\$57,377,672	92%	\$4.84

¹Denotes percent of processed material

²Denotes percent of tons available

* Closed for renovation for part of the year (1995, 1996)

** Beginning in 1996, per capita is included as revenue

***Closed for one month for Air Knife Installation

TWENTY YEAR AVERAGES

<i>\$/Incoming Ton Revenue</i>	\$54.67
<i>\$/Incoming Ton Expense, Net</i>	\$4.84
<i>Percent Recovery - R.D.F.</i>	65%
<i>Percent Recovery - Ferrous</i>	4%

Figure 3

CITY OF AMES, IOWA

POPULATION - PERCENTAGES - CHARGES

Annual Billing - Calendar 2006
Per Capita - \$10.50

	<u>POPULATION</u> ¹	<u>PERCENT OF</u> <u>POPULATION</u>	<u>TOTAL</u>
Ames	40,331 ²	58.54%	\$423,475.50
Story County	9,019	13.09%	\$94,699.50
Nevada	6,658	9.66%	\$69,909.00
Story City	3,228	4.69%	\$33,894.00
Huxley	2,316	3.36%	\$24,318.00
Roland	1,324	1.91%	\$13,902.00
Slater	1,306	1.90%	\$13,713.00
Gilbert	987	1.43%	\$10,363.50
Colo	868	1.26%	\$9,114.00
Cambridge	819	1.19%	\$8,599.50
Maxwell	807	1.17%	\$8,473.50
Zearing	617	0.90%	\$6,478.50
McCallsburg	318	0.46%	\$3,339.00
Kelley	300	0.44%	\$3,150.00
TOTALS	68,898	100.00%	\$723,429.00

¹ Based on 2000 U.S. Census

² 50,731 minus I.S.U. 10,400

APPENDIX

**CITY OF AMES, IOWA
MONTHLY REFUSE VOLUMES - 2007**

	TOTAL REFUSE RECEIVED <u>(Tons)</u>	TONS RECEIVED FROM <u>I.S.U.</u>	TONS RECEIVED FROM <u>N.A.D.C.</u>	TONS RECEIVED FROM <u>I.D.O.T.</u>	TONS RECEIVED FROM <u>OTHER</u>
January	4,575	363	6	16	4,190
February	3,930	350	6	14	3,560
March	4,564	360	12	20	4,173
April	4,980	352	8	16	4,603
May	5,372	465	11	12	4,884
June	4,623	178	5	9	4,431
July	5,149	235	11	13	4,890
August	5,610	454	11	16	5,129
September	4,563	408	11	14	4,130
October	5,134	239	5	9	4,881
November	4,614	279	8	9	4,318
December	4,219	326	7	15	3,871
TOTAL	57,333	4,009	101	163	53,060
% OF TOTAL	100.0%	7.0%	0.2%	0.3%	92.5%

**CITY OF AMES, IOWA
RESOURCE RECOVERY PLANT VOLUMES
12/31/2007**

CLASS	2007 TRIPS	2007 WEIGHT	PERCENT OF TOTAL WEIGHT
Non-Scale Refuse (Car line)	3,559	978	1.7%
Commercial Haulers	9,551	46,448	81.0%
Private Industry/Contractors	414	1,059	1.8%
City of Ames	59	45	0.1%
Iowa State University	1,155	4,009	7.0%
Iowa Dept of Transportation	359	163	0.3%
U S D A Lab	108	101	0.2%
Directly to Boone during downtime	882	4,530	7.9%
TOTALS	16,087	57,333	100.0%

CITY OF AMES, IOWA

**RESOURCE RECOVERY SYSTEM
FEE SCHEDULE**

YEAR	TIPPING FEE	CARLINE	
		CARS	PICKUPS
1999/00	\$42.00/TON	\$7.00	\$19.00
2000/01	\$45.00/TON	\$7.00	\$19.00
2001/02	\$45.00/TON	\$7.00	\$19.00
2002/03	\$52.75/TON	\$8.00	\$22.00
2003/04	\$52.75/TON	\$8.00	\$22.00
2004/05	\$52.75/TON	\$8.00	\$22.00
2005/06	\$52.75/TON	\$8.00	\$22.00
2006/07	\$52.75/TON	\$8.00	\$22.00
2007/08	\$52.75/TON	\$8.00	\$22.00
PROPOSED 2008/09	\$52.75/TON	\$8.00	\$22.00