

ITEM # 11
DATE: 10/23/07

COUNCIL ACTION FORM

SUBJECT: ENCROACHMENT PERMIT FOR A SIGN AT 314 MAIN STREET, STE. 200

BACKGROUND:

On October 15, 2007, a tenant of the building at 314 Main Street, Ste. 200 has requested an encroachment permit for a new sign which will encroach over the City sidewalk.

The proposed sign will be a blade sign fixed to the front of the building and will extend not more than five feet over the sidewalk. This will be a metal sign so the area of the encroachment is less than one square foot. It will be more than eight feet above the sidewalk at the lowest point and will not infringe upon the use of the sidewalk by the public.

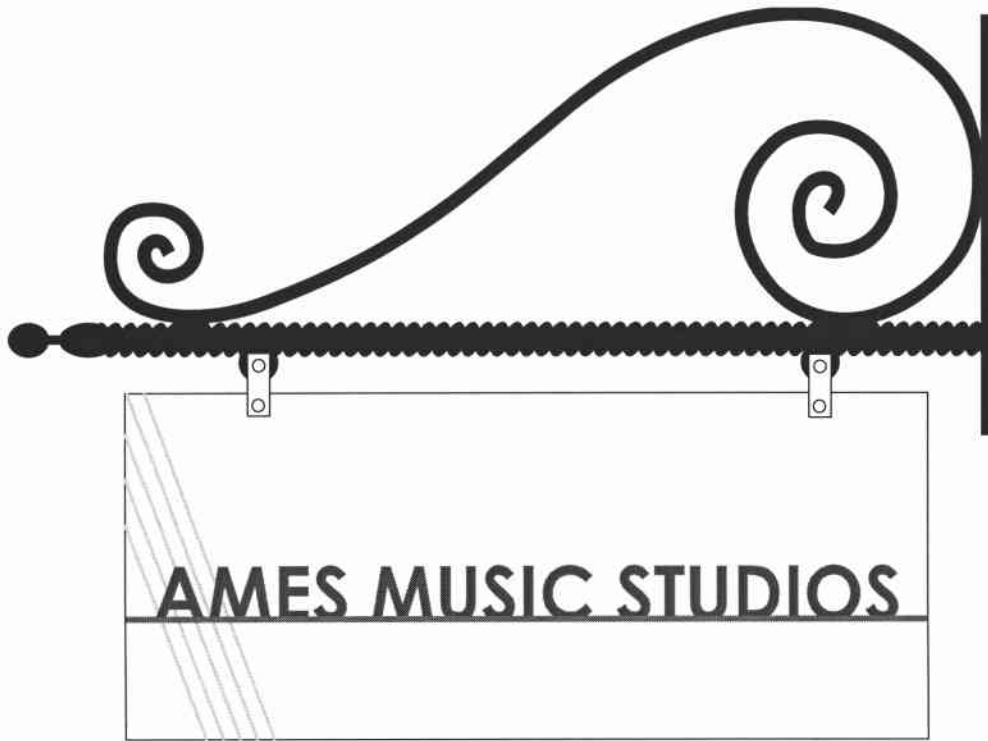
The requirements of Section 22.3 of the Municipal Code have been met with the submittal of a hold-harmless agreement signed by the property owner and the applicant, and a certificate of liability insurance coverage which protects the City in case of an accident. The fee for this permit was calculated at \$25 and the full amount has been received by the City Clerk.

ALTERNATIVES:

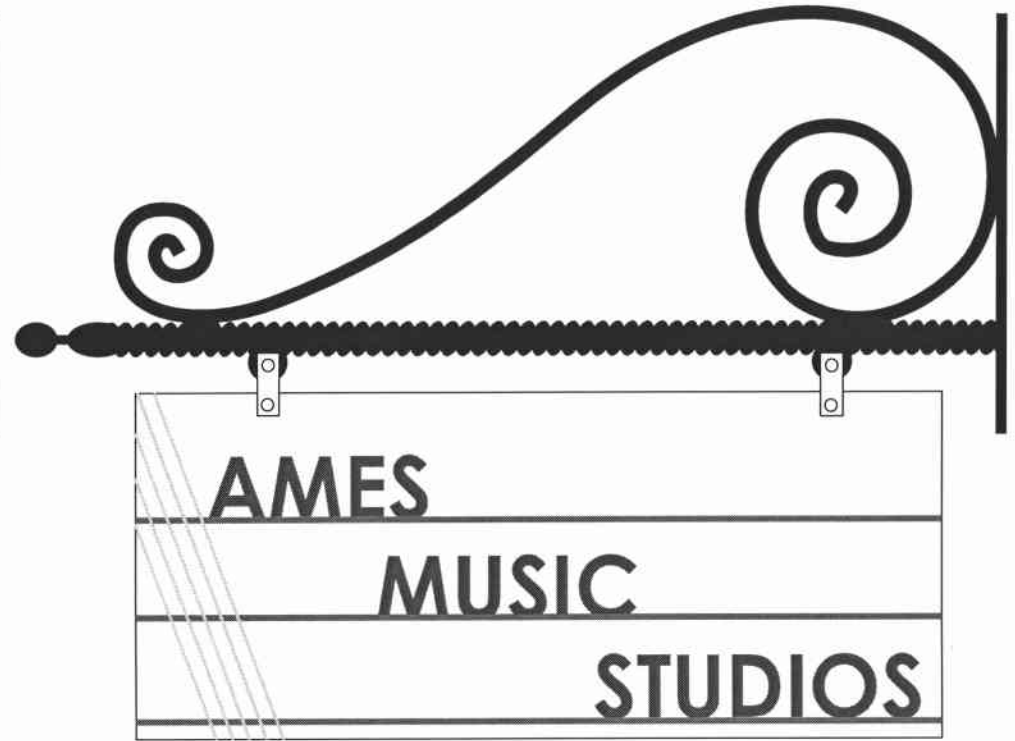
1. Approve the request.
2. Deny the request.

MANAGER'S RECOMMENDED ACTION:

It is the recommendation of the City Manager that the City Council adopt Alternative #1, granting the encroachment permit.



DESIGN OPTION A:



DESIGN OPTION B:

Qty: 1

53" Long x 20" Tall Deluxe Scroll Bracket (Powder Coated Black).
18" x 43" White Powder Coated .060 Aluminum Sign Face (2-Sided).

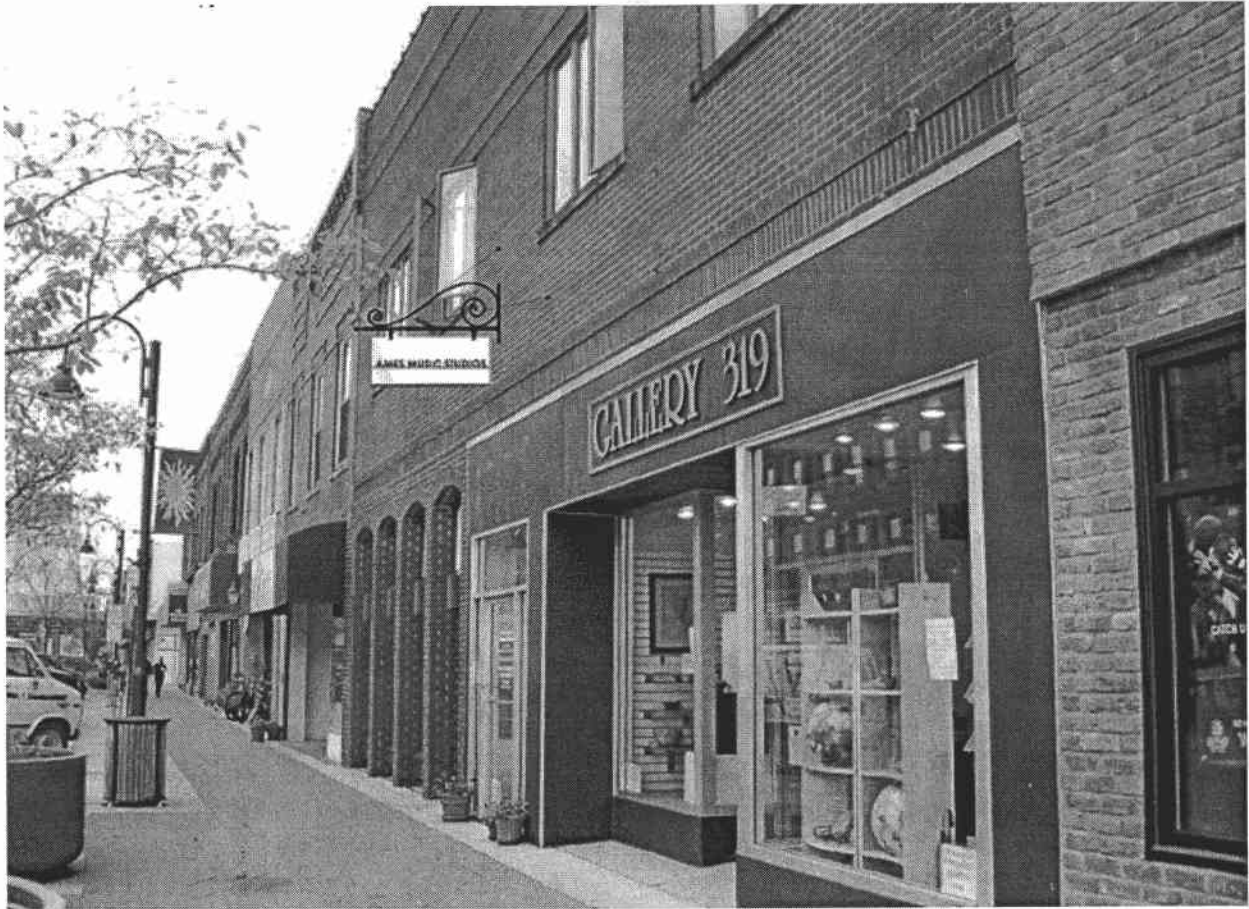
Black, Burgundy, Traffic Grey HP Vinyl Graphics.

Frame to be secured with three extension wires (Bracket to wall).

4" x 1.5' Brace with Nuts and Bolts to secure sign from movement.

Installed by Sign Pro.

Cost: \$490.00 + tax



Al Biela, Director
Ames Music Studios / Iowa School of Rock
515.232.6546