

**To:** Mayor and City Council

**CC:** Steve Schainker, City Manager  
John Joiner, P.E.; Director of Public Works  
Tracy Peterson, P.E.; Municipal Engineer

**From:** Hafiz Ibrahim, P.E.: Civil Engineer II

**Date:** May 31, 2023

**Subject:** South 16<sup>th</sup> St Pavement Improvements Project

On April 25, 2023 the City Council referred a request to research the bicycle and pedestrian detours for the construction project at S. Duff and S.E. 16<sup>th</sup> Street to improve accessibility. The following information summarizes our strategy for handling accessibility at this intersection during this complex construction project.

The reconstruction of S. 16<sup>th</sup> Street pavement improvements project includes adding turn lanes on both sides of S. 16<sup>th</sup> Street and a traffic signal at the S. 16<sup>th</sup> St/S. Duff Avenue intersection. This project also includes improving the existing shared use path along the north side of S. 16<sup>th</sup> Street and infill of sidewalk along the south side of S. 16<sup>th</sup> Street from S. Duff Avenue to just west of Menards.

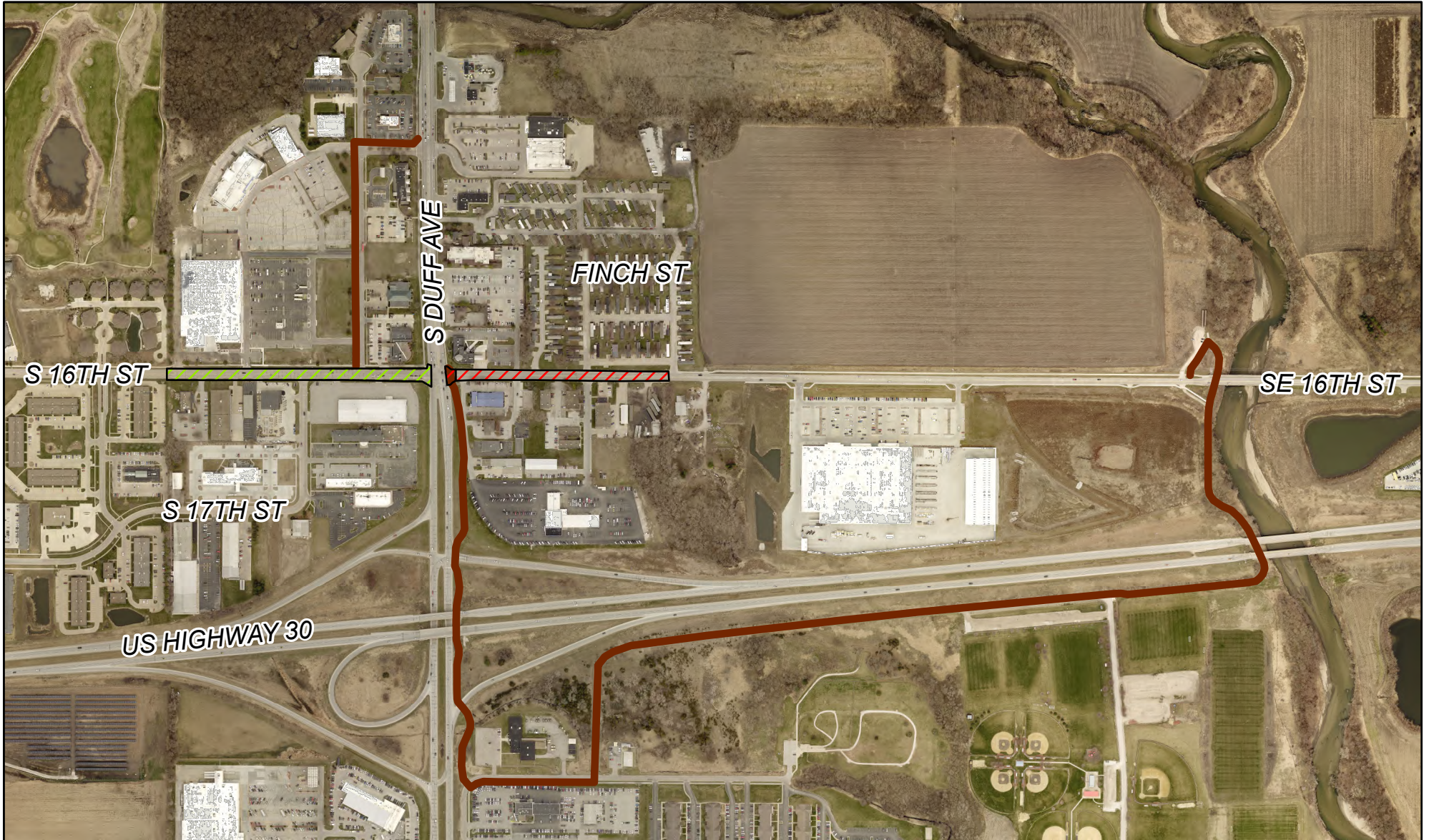
The S. 16<sup>th</sup> Street project started last year with Phase I (see attached map). During Phase I, the existing shared use path along the north side of S. 16<sup>th</sup> Street was temporarily removed during widening of the road to allow for two-way traffic during construction. The contractor set up a bicycle and pedestrian detour route as shown on the attached map during this phase. This detour route functioned well throughout the construction last year.

This year, the contractor started the construction of the northeast and southeast corners of the intersection. The contractor encountered conflicts with several utilities at the northeast and southeast corner that has direct impact with the pedestrian detour route. It took the utility companies over a month to relocate their facilities, therefore it forced the contractor to close the detour route at the northeast and southeast corners of the intersection while the utility companies were working in the area. There were several deep, open trenches at the northeast and southeast corners of the intersection so that it was not feasible to safely allow

pedestrians/bikes within these areas. All the utilities have been relocated and the contractor has placed temporary gravel at the intersection and reopened the shared use path. The contractor has completed the shared use path along the north side and infill of sidewalk along the south side of S. 16<sup>th</sup> Street on Phase I, except the connection at the northeast and southeast corner. This connection will be completed once the contractor installs the new traffic signal, anticipated in July 2023.

During the construction of the northwest corner, a detour route was set up per the attached plan. **These detour routes will be used throughout the remaining construction this year when the existing shared use path is closed.** Due to the location of this project, there's no different options for bicycle and pedestrian detour routes.

# S. 16th Pavement Improvements



Phase I



Phase II



Detours

## South 16th Street

