

ITEM #: 42  
DATE: 03-28-23  
DEPT: PW

**COUNCIL ACTION FORM**

**SUBJECT: PARKING REGULATIONS FOR SOMERSET TOWN HOME AND ROW HOUSE ASSOCIATION**

**BACKGROUND:**

On December 13, 2022, City Council directed the City Attorney's Office to draft a parking ordinance for the Somerset Town Home area, updating parking regulations for Bristol Drive and Hampton Street. A draft ordinance has been prepared and is attached (Attachment 1). **The original Council Action Form (including a map) from December 13, 2022, containing the rationale and background regarding this update to the parking regulations has also been attached (Attachment 2) for reference.**

**ALTERNATIVES:**

1. Approve first reading of the attached ordinance updating parking regulations for Bristol Drive and Hampton Street.
2. Approve first reading of the attached ordinance with modifications.
3. Do not approve the attached ordinance.

**CITY MANAGER'S RECOMMENDED ACTION:**

This ordinance will enact the parking changes to Section 18 of the Municipal Code as previously directed by City Council. **Therefore, it is the recommendation of the City Manager that the City Council adopt Alternative No. 1, as noted above.**

ORDINANCE NO.

AN ORDINANCE TO AMEND THE MUNICIPAL CODE OF THE CITY OF AMES, IOWA, BY AMENDING SECTIONS 18.31(32) AND (343) THEREOF, FOR THE PURPOSE OF REGULATING PARKING ON BRISTOL DRIVE AND HAMPTON STREET, REPEALING ANY AND ALL ORDINANCES OR PARTS OF ORDINANCES IN CONFLICT TO THE EXTENT OF SUCH CONFLICT; PROVIDING A PENALTY; AND ESTABLISHING AN EFFECTIVE DATE.

BE IT ENACTED, by the City Council for the City of Ames, Iowa, that:

Section One. The Municipal Code of the City of Ames, Iowa shall be and the same is hereby amended by amending Sections 18.31(32) and (343) to regulate parking on Bristol Drive and Hampton Street as follows:

“Sec. 18.31 REGULATIONS FOR SPECIFIC STREETS OR LOCATIONS.”

...

(32) **BRISTOL DRIVE.** Parking is prohibited at all times on the north and east sides. Parking is prohibited at all times on both sides from Eaton Avenue to Stange Road.

...

(343) **HAMPTON STREET.** ~~Parking is restricted along the south side of Hampton Street from its intersection with Bradford Drive, east, to its intersection with Eaton Avenue.~~ Parking is prohibited at all times on the north side from Bradford Drive to Eaton Avenue.

Section Two. Violation of the provisions of this ordinance shall constitute a municipal infraction punishable as set out by law.

Section Three. All ordinances, or parts of ordinances, in conflict herewith are hereby repealed to the extent of such conflict, if any.

Section Four. This ordinance shall be in full force and effect from and after its passage and publication as required by law.

Passed this \_\_\_\_\_ day of \_\_\_\_\_, \_\_\_\_\_.

\_\_\_\_\_  
Renee Hall, City Clerk

\_\_\_\_\_  
John A. Haila, Mayor

ITEM#: 10  
DATE: 12-13-22

**COUNCIL ACTION FORM**

**SUBJECT: PARKING REGULATIONS FOR SOMERSET TOWN HOME AND ROW HOUSE ASSOCIATION**

**BACKGROUND:**

Jerry Sloan, president of the Somerset Town Home and Row House Association, contacted City staff with a request for modification of the “No Parking” areas within their association. **Mr. Sloan submitted a letter summarizing the association’s discussion, which has been provided as an attachment to this document (Attachment 1).**

**The two requested modifications are summarized below and shown on the attached map (Attachment 2):**

1. Establish “No Parking” at all times on the south side of **Bristol Drive** from Stange Road to Eaton Avenue.
2. Establish “No Parking” at all times on the north side of **Hampton Street**, and allow parking on the south side of **Hampton Street**. Including “No Parking” at all times in front of Lot 9, **2706 Hampton Street**.

**City staff has reviewed the requested changes and believes they align with the City’s standards for parking regulations on streets that are too narrow to accommodate parking on both sides.**

Typically, when requests of this nature come to the City, staff will send a mailing to notify the affected neighborhood and solicit feedback on the changes. However, in this case the home owner association board has already performed this step and obtained a majority agreement on the proposed changes.

**ALTERNATIVES:**

1. Direct the City Attorney’s Office to draft an ordinance enacting the proposed changes to parking regulations in the Somerset Town Home and Row House Association area.
2. Refer this item to staff to perform further analysis or collect additional feedback.
3. Reject the proposal and maintain the current parking regulations.

**CITY MANAGER’S RECOMMENDED ACTION:**

The proposed changes align with the City's standards for parking regulations for streets that are too narrow to allow parking on both sides of the street. Considering the Somerset Town Home and Row House Association has already discussed and agreed to the proposed changes, it appears to be an appropriate change to the Municipal Code.

Therefore, it is the recommendation of the City Manager that the City Council adopt Alternative No. 1, as noted above.

Attachment 1: Association Letter

Ames Mayor and City Council  
515 Clark Avenue  
Ames, IA 50010

August 1, 2022

Dear Mayor Haila and City council Members,

The Somerset Town Home and row House Association Board of directors request two changes to the on-street parking in our Association.

1. Establish a “No Parking” zone on the South side of Bristol Drive beginning at Eaton Avenue and extending East to the Stange Road intersection.

Bristol Drive is the primary entry and exit for the 121 residences in our Association. Parking in this area creates a congestion and visibility hazard for vehicles driving this route to and from Stange Road. Vehicles parked in this area also makes snow removal difficult in this area and the intersection of Bristol Drive and Eaton Avenue is a school bus stop which contributes to the congestion in this area.

2. Move the “No Parking” Zone on the South side of Hampton Street to the North side of Hampton Street. We request that parking on the south side of Hampton beginning at the walking path near the intersection of Hampton Street and Bradford Drive and extend East to the 2706 Hampton Street Driveway. We also request that the “No Parking” zone on the south side of circle drive intersection of Hampton Street and Eaton Avenue remain in place and be signed appropriately.

Moving vehicle parking to the South of Hampton Street will facilitate snow removal and reduce congestion directly in front of the residences located on the North side of Hampton Street to an area on the South side of the street where there are no adjacent residences.

Our association Board of Directors strives to provide a safe attractive neighborhood for our residents. Approving this request will help us maintain this goal.

Thank you for considering our request, the Somerset Town Home and row House Association Board of directors.

Jerry Sloan, President

Dana Keever, Treasurer

Roger Smith, Secretary

Pam Opheim, Director

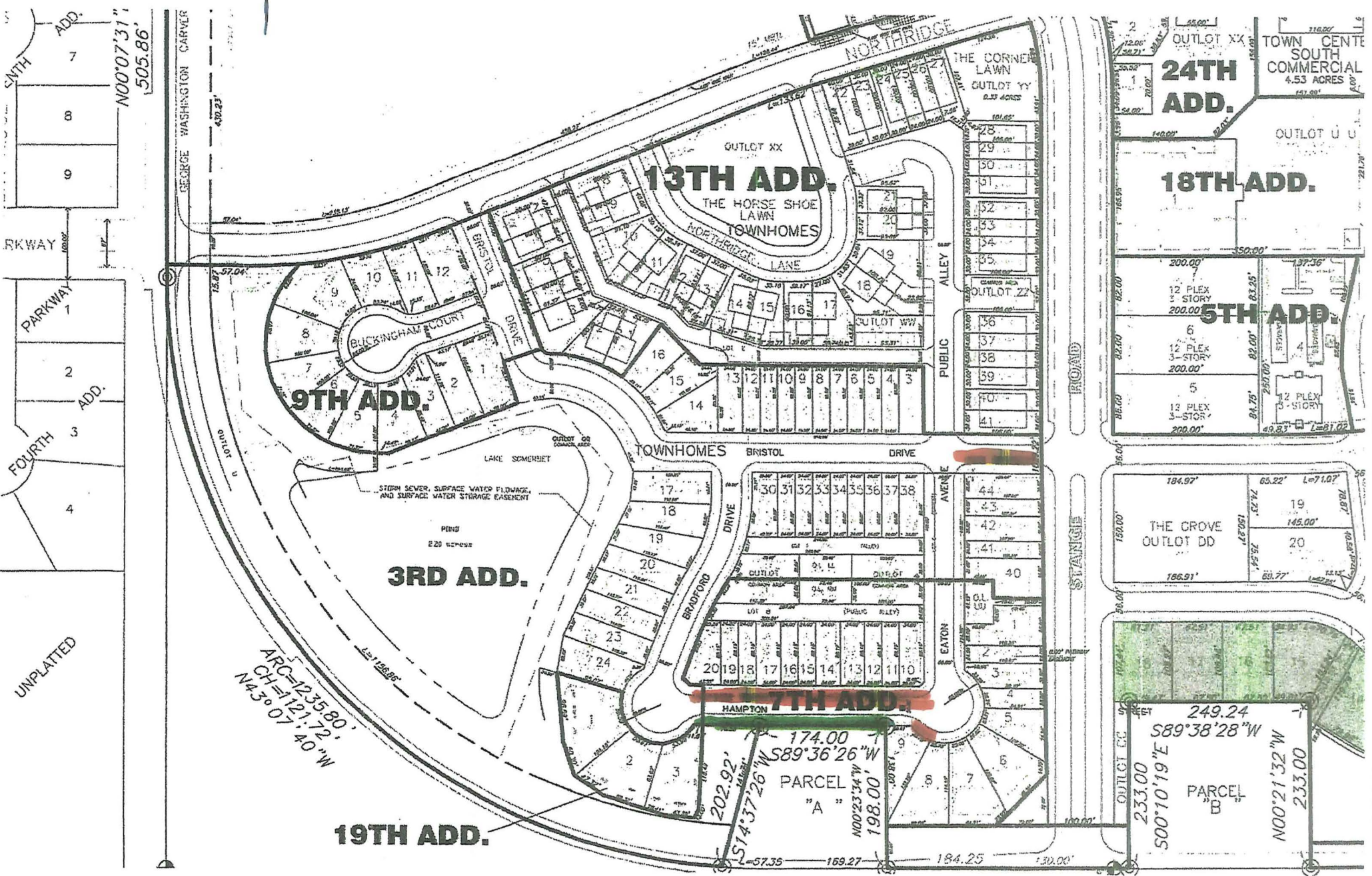
Warren Mueller, Director



Deb Beelner, Director

Shari Albee, Director

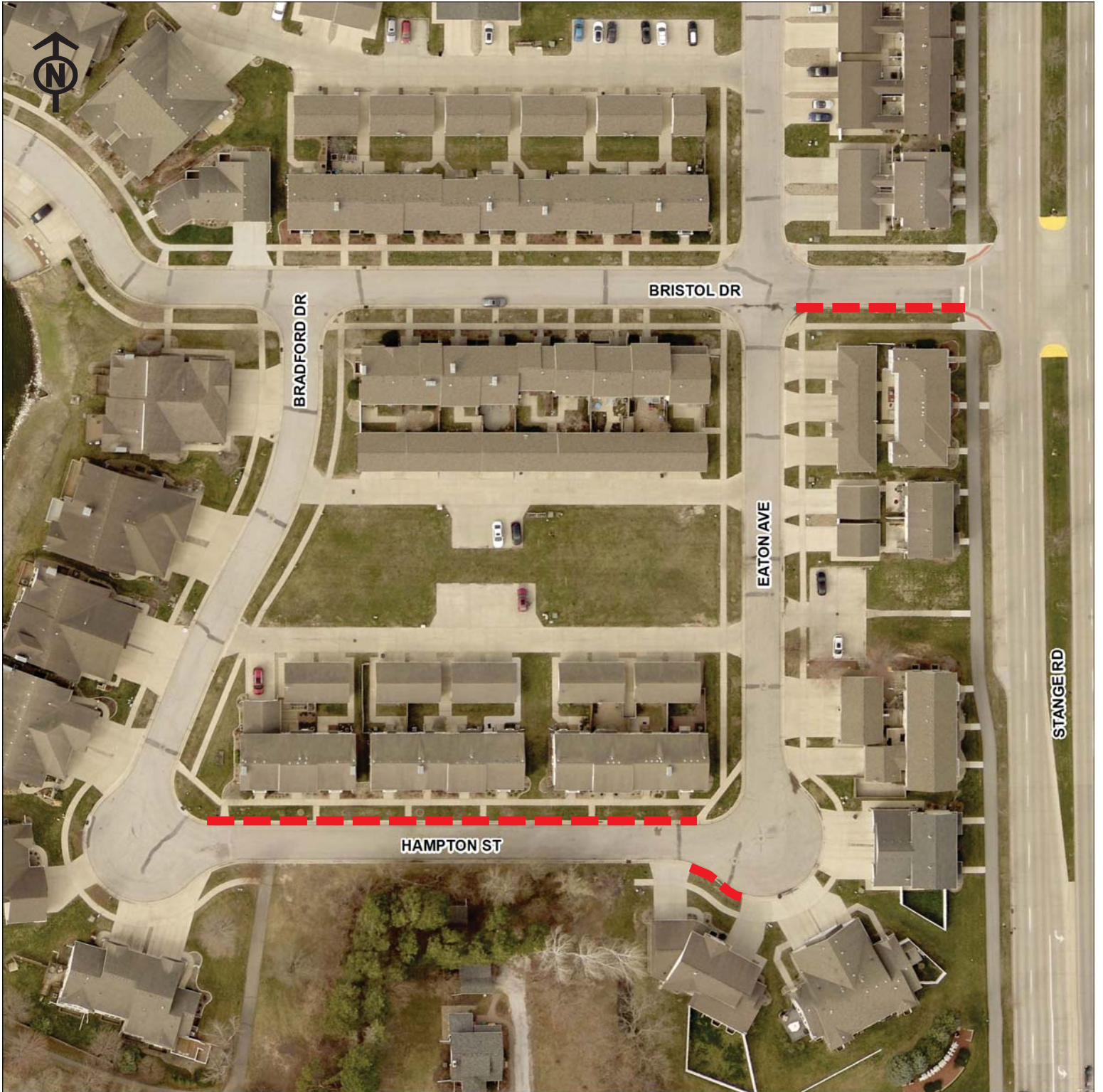


# SOMERSET TOWN HOME AND ROW HOUSE ASSOCIATION



-  NO Parking Zone Requested
-  Parking Zone Requested

Attachment 2:  
Proposed parking regulation changes



— — — — — No Parking (at all times)