

ITEM #: 28
 DATE: 02/28/23
 DEPT: PW

COUNCIL ACTION FORM

SUBJECT: 2021/22 SHARED USE PATH SYSTEM EXPANSION – IOWAY CREEK

BACKGROUND:

This program provides for the construction of shared-use paths on street rights-of-way, adjacent to streets, and through greenbelts. The Metropolitan Transportation Plan (MTP) identifies those paths that separate bicycle traffic from higher-speed automobile traffic. **This project will construct a shared use path along Ioway Creek from S. 5th Street to 0.5 miles east of S. Duff Ave, as shown in the attachment.**

Because this project funding includes Iowa Department of Transportation (DOT) Transportation Alternatives Program (TAP) funds, the project must follow Iowa DOT letting policies and was let by the Iowa DOT. One of the policies of the IDOT is that the contractor meet, or exceed, a Disadvantage Business Enterprise (DBE) minimum participation goal of 2% of the contract total. This goal means that 2% of the contract amount must be performed by a state certified DBE(s).

On February 21, 2023, bids for the project were received as follows:

<i>Bidder</i>	<i>Bid Amount</i>	<i>DBE %</i>
<i>Engineer's Estimate</i>	\$1,036,998.92	2% Goal
CALIBER CONCRETE, LLC	\$ 967,665.92	2.10%
CON-STRUCT, INC.	\$1,132,160.00	2.73%
HOWREY CONSTRUCTION, INC.	\$1,148,918.35	2.21%
TK CONCRETE, INC.	\$1,543,147.50	2.12%

The table below shows the revenues and expenses for this project:

	Revenue	Expenses
Local Option Sales Tax	\$521,800	
AAMPO TAP Funds (80% of Construction, up to \$728,000)	\$728,000	
Construction		\$967,665.92
Engineering & Admin. (Estimated)		\$200,000.00
TOTAL	\$1,249,800	\$1,167,665.92

ALTERNATIVES:

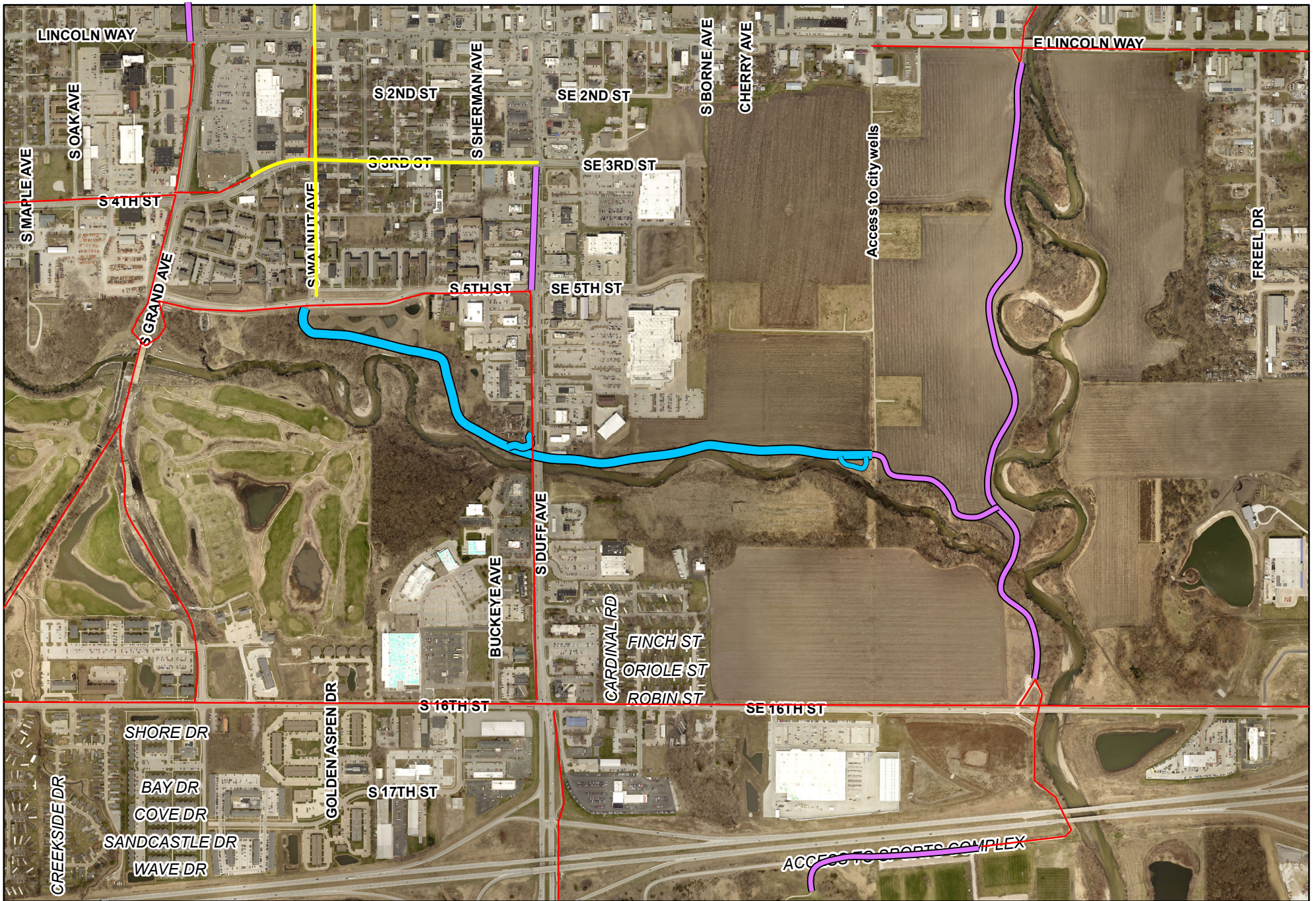
1. a. Accept the report of bids for the 2021/22 Shared Use Path System Expansion – loway Creek.

b. Approve the final plans and specifications for this project and award the 2021/22 Shared Use Path System Expansion – loway Creek to Caliber Concrete, LLC of Adair, Iowa, in the amount of \$967,665.92, contingent upon receipt of Iowa DOT concurrence.
2. a. Accept the report of bids for the 2021/22 Shared Use Path System Expansion – loway Creek.

b. Reject award and direct staff to modify the project for a future Iowa DOT bid letting.
3. Do not proceed with the project at this time.

CITY MANAGER'S RECOMMENDED ACTION:

By awarding this project, it will be possible to provide a significant greenbelt trail expansion to our current shared use path network. Therefore, it is the recommendation of the City Manager that the City Council adopt Alternative No. 1, as noted above.



2021/22 Shared Use Path (loway Creek)

- Project Location
- Future Shared Use Path Connections
- Existing Off-Street Bike Facility
- Existing On-Street Bike Facility



1 inch = 1,000 feet