

COUNCIL ACTION FORM

SUBJECT: TEMPORARY STREET CLOSURE FOR NEW SANITARY SEWER AND WATER SERVICES AT 308 SOUTH WALNUT AVENUE

BACKGROUND:

On February 27, 2020, a site plan was approved for a new apartment building at 308 South Walnut Avenue. As part of this plan, **new sanitary sewer and water service connections are needed.** The water main exists along the east edge of S Walnut Ave and the sanitary sewer main is near the centerline of the street (see attached map). **Due to the location of the sanitary sewer main, this work will require the closure of both lanes of South Walnut Ave between South 3rd St and South 4th St for two (2) calendar days to safely accommodate the water and sewer service installations (see attached map).**

The Municipal Code requires that City Council approve temporary closures of streets that are classified as arterials or are active CyRide routes, which is the case with South Walnut Avenue (Blue Route #3).

Pending weather conditions, the contractor, Keith Cooper & Sons Inc., has proposed to begin work on Wednesday, March 25th and will notify the affected residents. Access to area residences will be maintained at all times. If the work is completed sooner than the requested 2-day closure, the street will be re-opened to traffic.

CyRide has been notified and will re-route bus service during the street closure. The detour route has not yet been determined by CyRide.

ALTERNATIVES:

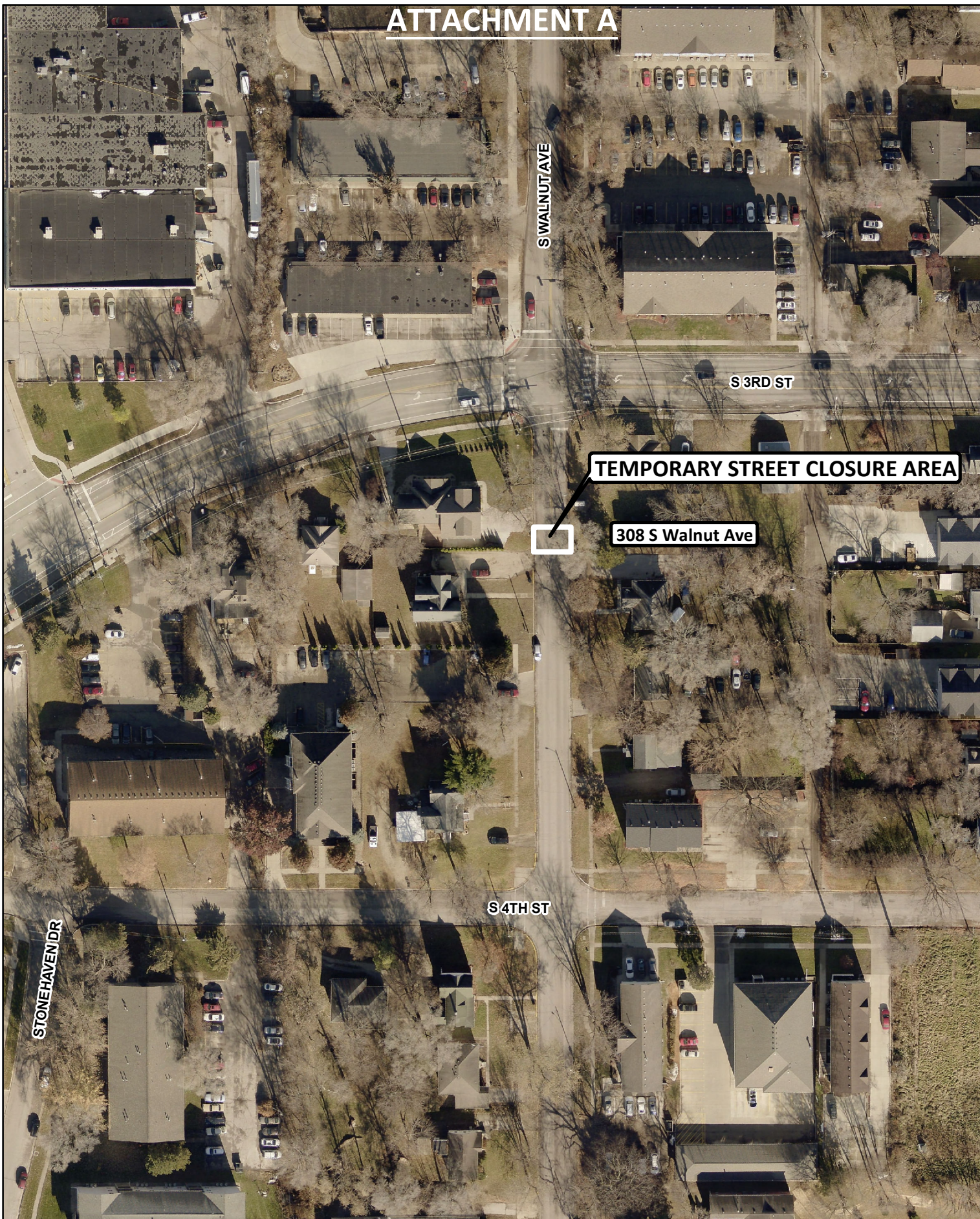
1. Approve the closure of Walnut Avenue, as noted on the attached map, to facilitate the new water and sewer service installations at 308 South Walnut Ave.
2. Direct staff to work with the contractor to determine alternate dates to conduct the sewer service installation.

MANAGER'S RECOMMENDED ACTION:

By granting this closure of Walnut Avenue, City Council would be facilitating the development of this property.

Therefore, it is the recommendation of the City Manager that the City Council adopt Alternative No. 1 as described above.

ATTACHMENT A



Temporary Street Closure
308 S Walnut Ave Sanitary Sewer & Water Service Installation
(Cyride Blue Route #3)



1 inch = 100 feet
Date: 3/10/2020