

COUNCIL ACTION FORM

SUBJECT: WATER AND SEWER RATE ADJUSTMENTS FOR FY 2020/21

BACKGROUND:

Each year as a part of the annual budget process, staff updates a spreadsheet model for the Water and Sewer Funds that reflects current and projected operating and capital expenses for the utilities over the next ten years, and the resulting annual ending fund balance in each of the funds. This model is used to establish a long-range pattern of rate increases that will fully fund these self-funded enterprise utilities, including a 25% operating reserve.

During the development of the FY 2020/21 budget, staff determined that a two percent (2%) increase to water rates and a five percent (5%) increase to the sewer rates would be needed, effective July 1, 2020. While the revenue estimated to be generated from the rate increases was appropriated in the FY 2020/21 budget, no formal action has yet been taken to adjust the rates. **Attached to this Council Action Form is a draft ordinance that will increase the water rates by 2% and the sewer rates by 5%, effective for all bills mailed on or after July 1, 2020.**

The slides attached to this Council Action Form provide a summary of the fund balance analysis in a format that is very similar to what has been used in prior years. Highlights from these slides will be shared at the Council meeting in a brief presentation.

ALTERNATIVES:

1. Approve on first reading, an ordinance that adjusts water rates by two percent (2%) and sewer rates by five percent (5%), effective for bills mailed on or after July 1, 2020.
2. Direct staff to make modifications to the rate ordinance.
3. Do not take any action to adjust water or sewer rates, and give staff direction on expenditure reductions in order to maintain positive fund balances.

MANAGER'S RECOMMENDED ACTION:

The proposed rate increase is necessary to fund the on-going operations and maintenance budget plus the anticipated capital improvements projects. Therefore, it is the recommendation of the City Manager that the City Council adopt Alternative No. 1, thereby approving on first reading an ordinance that adjusts water rates by two percent (2%) and sewer rates by five percent (5%) effective for bills mailed on or after July 1, 2020.

ORDINANCE NO.

AN ORDINANCE TO AMEND THE MUNICIPAL CODE OF THE CITY OF AMES, IOWA, BY REPEALING CHAPTER 28, SECTION 201(1)(b)(ii)(a)(b), 2(b)(ii)(a)(b), 3(b)(ii)(a)(b), 4(b)(ii)(a)(b), 5(b)(ii)(a)(b), 7, 8, SECTION 304 (3) AND ENACTING A NEW CHAPTER 28, SECTION 201(1)(b)(ii)(a)(b), 2(b)(ii)(a)(b), 3(b)(ii)(a)(b), 4(b)(ii)(a)(b), 5(b)(ii)(a)(b), 7, 8, SECTION 304 (3). THEREOF, FOR THE PURPOSE OF INCREASE OF WATER RATES AND CHARGES; REPEALING ANY AND ALL ORDINANCES OR PARTS OF ORDINANCES IN CONFLICT TO THE EXTENT OF SUCH CONFLICT; AND ESTABLISHING AN EFFECTIVE DATE.

BE IT ENACTED, by the City Council for the City of Ames, Iowa, that:

Section One. The Municipal Code of the City of Ames, Iowa shall be and the same is hereby amended by repealing Chapter 28, Section 201(1)(b)(ii)(a)(b), 2(b)(ii)(a)(b), 3(b)(ii)(a)(b), 4(b)(ii)(a)(b), 5(b)(ii)(a)(b), 7, 8, Section 304 (3) and enacting a new Chapter 28, Section 201(1)(b)(ii)(a)(b), 2(b)(ii)(a)(b), 3(b)(ii)(a)(b), 4(b)(ii)(a)(b), 5(b)(ii)(a)(b), 7, 8, Section 304(3) as follows:

Sec. 28.201. WATER RATES AND CHARGES

The rates and charges for water supplied to consumers by the water utility of the city, to be billed on or after July 1, 2020 are as follows:

(1) Residential Rates.

(a) **Availability.** The residential rate shall apply to all customer accounts within the Ames corporate limits serving properties that are intended for occupancy by a single family as defined by the Ames Zoning Ordinance, provided that such accounts consist of no more than two dwelling units served by a single water meter or to multiple unit residential structures (such as apartment buildings) where every dwelling unit is separately metered. The rate does not apply to domestic uses that consist of more than two dwelling units served by a single meter or to water accounts that provide service for common areas such as shared laundry facilities or for general property maintenance.

- (b) **Rate per billing period.** For each monthly billing period a residential rate customer:
- (i) shall be charged a minimum charge based on meter size, and in addition
 - (ii) shall be charged for water usage during the billing periods as follows:
 - (a) for bills mailed on or between July 1 and October 31 (summer period):
 - \$0.0243 per cubic foot for the first 1000 cubic feet of usage
 - \$0.0428 per cubic foot for the next 1500 cubic feet of usage
 - \$0.0644 per cubic foot for all usage over 2500 cubic feet
 - (b) for bills mailed on or between November 1 and June 30 (winter period):
 - \$0.0243 per cubic foot

(Ord. No. 4351, 5-8-18; Ord. No. 4382, 4-9-19)

(2) Non-residential (Commercial) Rates

(a) **Availability.** The non-residential rate shall apply to all accounts that do not meet the criteria for residential, irrigation and yard water, rural water, or non-peaking industrial rates.

- (b) **Rate per billing period:** For each monthly billing period a non-residential customer:
- (i) shall be charged a minimum charge based on meter size, and in addition
 - (ii) shall be charged for water usage during the billing periods as follows:
 - (a) for bills mailed on or between July 1 and October 31 (summer period):
 - \$0.0318 per cubic foot
 - (b) for bills mailed on or between November 1 and June 30 (winter period):
 - \$0.0243 per cubic foot

(Ord. No. 4351, 5-8-18; Ord. No. 4382, 4-9-19)

(3) **Non-Peaking Industrial Rate.**

(a) **Availability.** The non-peaking industrial rate shall be available to all non-residential rate customers who meet the following criteria:

(i) Average winter usage greater than 100,000 cubic feet per billing period. Average winter usage per billing period will be calculated by taking the sum of the usage during the most previous December, January, and February billing periods and dividing by three.

(ii) **A summer peaking factor equal to or less than 120%.** The summer peaking factor shall be computed by taking the largest consumption billed during the most recent summer billing periods (bills mailed July, August, September, and October) and dividing it by the average winter usage, with the result expressed as a percentage.

(b) **Rate per Billing Period.** For each monthly billing period a non-peaking industrial rate customer:

(i) shall be charged a minimum charge based on meter size, and in addition

(ii) shall be charged for water usage during the billing periods as follows:

(a) for bills mailed on or between July 1 and October 31 (summer period):

\$0.0243 per cubic foot

(b) for bills mailed on or between November 1 and June 30 (winter period):

\$0.0243 per cubic foot

(Ord. No. 4351, 5-8-18; Ord. No. 4382, 4-9-19)

(4) **Irrigation and Yard Water Service Rate.**

(a) **Availability.** The irrigation and yard water rate shall apply to all separately metered water uses that meet one of the following criteria:

(i) Serves primarily outdoor water uses, such as irrigation systems and outside hose bibs.

(ii) Serves cooling towers, spray ponds, evaporative condensers, chillers, or such similar uses where water is used as a medium for cooling.

(iii) Serves as a temporary water service, whether for irrigation purposes or for other outdoor uses.

(b) **Rate per Billing Period.** For each monthly billing period an irrigation and yard water rate customer:

(i) shall be charged a minimum charge as described below, and in addition

(ii) shall be charged for water usage during billing periods as follows:

(a) for bills mailed on or between July 1 and October 31 (summer period):

\$0.0350 per cubic foot for the first 2000 cubic feet of usage

\$0.0644 per cubic foot for the next 3000 cubic feet of usage

\$0.1072 per cubic foot for all usage greater than 5000 cubic feet.

(b) for bills mailed on or between November 1 and June 30 (winter period):

\$0.0243 per cubic foot

(Ord. No. 4351, 5-8-18; Ord. No. 4382, 4-9-19)

(5) **Rural Water Rate.**

(a) **Availability.** The rural water rate shall apply to all customer accounts outside the Ames corporate limits, except those covered by a separate wholesale contract or agreement for service.

(b) **Rate per billing period.** For each monthly billing period, a rural water rate customer:

(i) shall be charged a Rural water minimum charge based on meter size.

(ii) shall be charged for water usage during billing periods as follows:

(a) for bills mailed on or between July 1 and October 31 (summer period):

\$0.0402 per cubic foot for the first 2000 cubic feet of usage

\$0.0740 per cubic foot for the next 3000 cubic feet of usage

\$0.1233 per cubic foot for all usage greater than 5000 cubic feet.

(b) for bills mailed on or between November 1 and June 30 (winter period):

\$0.0274 per cubic foot for all consumption

(Ord. No. 4351, 5-8-18; Ord. No. 4382, 4-9-19)

(6) **Water Rate and Charge Adjustments.** It shall be the duty of the director of water and pollution control to review and recommend to the city council revisions of the rates and charges established and set out in this division at intervals appropriate to provide for the funding needs of the utility.

(7) **Minimum charges.** For each monthly billing, each customer shall be charged a minimum monthly charge based on the size of the water meter (s) and/or irrigation meter (s) at each location. The minimum monthly charge may be prorated, based on a 30-day billing period, for the customer's initial and/or final bills, provided that in no case shall the minimum monthly charge be less than five dollars and ninety-six cents (\$5.96).

The minimum monthly charge for each water meter location shall be as follows:

Size of Meter	Residential, Non-residential, Non-peaking Industrial, and Irrigation Accounts	Yard Water Accounts	Rural Water Accounts
5/8" or 5/8"x3/4"	12.40	4.70	14.27
3/4 inch	24.81	7.29	28.53
1 inch	49.62	10.16	57.07
1-1/2 inch	99.25	14.01	114.14
2 inch	198.49	18.64	228.27
2 inch, battery of 2	384.46	--	442.13
2 inch, battery of 3	570.51	--	656.08
3 inch	396.89	24.24	456.43
4 inch	669.72	30.13	770.18
6 inch	1,116.20	36.09	1,283.63
8 inch	2,232.39	42.04	2,567.25
10 inch	3,348.59	47.55	3,850.88

(Ord. No. 4351, 5-8-18; Ord. No. 4382, 4-9-19)

(8) **Multiple dwellings – Mobile home parks.** Multiple dwellings, including mobile home parks, may be serviced from a single water meter. However, there shall be a surcharge added to the water rates set forth above, to be calculated as follows:

For a 5/8 inch meter serving 2 or more dwelling units..... 3.57/month/unit
For a ¾ inch meter serving 4 or more dwelling units..... 3.57/month/unit
For a 1 inch meter serving 8 or more dwelling units..... 3.57/month/unit
For a 1-1/2 inch meter serving 16 or more dwelling units..... 3.57/month/unit
For a 2 inch meter serving 30 or more dwelling units..... 106.86/month
for the first 30 units plus \$5.55/month per unit
for each additional unit in excess of 30 units
For a 3 inch or larger meter serving any number of dwelling units 4.91/month/unit

...

Sec. 28.304. SEWER RATES ESTABLISHED.

(1) Each user shall pay for the services provided by the City based on its use of the treatment works as determined by water meter readings or other appropriate methods acceptable to the City.
(Ord. 4199, 11-25-14)

(2) For all users, monthly user charges shall be based on actual water usage, except where a practical method of wastewater measurement is available. If a user has a consumptive use of water, or in some other manner uses water which is not discharged into the wastewater collection system, the user charge for that contributor may be based on readings of a wastewater meter(s) or separate water meter(s) installed and maintained at the user's expense and in a manner acceptable to the City.

(3) For each monthly billing on or after July 1, 2020, each customer shall be charged a minimum monthly charge. The minimum charge for each location shall be eleven dollars and fifty-eight cents (\$11.58). The minimum monthly charge may be prorated, based on a 30-day billing period, for the customer's initial and/or final bills, provided that in no case shall the prorated minimum monthly charge be less than four dollars and forty-five cents (\$4.45). In addition, for all water metered beginning with the first cubic foot each month, each user shall pay two dollars and ninety-six cents (\$2.96) per 100 cubic feet.
(Ord. No. 3168, Sec. 1, 4-28-92; Ord. No. 3326, Sec. 2, 5-9-95; Ord. No. 3834, 5-24-05; Ord. No. 3956, 06-10-08; Ord. No. 4037, 5-11-10; Ord. No. 4144, 5-14-13; Ord. No. 4814, 5-27-14; Ord. No. 4215, 5-12-15; Ord. No. 4351, 5-8-18)

...

Section Two. All ordinances, or parts of ordinances, in conflict herewith are hereby repealed to the extent of such conflict, if any.

Section Three. This ordinance shall be in full force and effect from and after its passage and publication as required by law.

Passed this _____ day of _____, _____.

Diane R. Voss, City Clerk

John A. Haila, Mayor



FY 2020-2021 Water & Sewer Rates

March 10, 2020

Entry signage at the Ames Water Treatment Plant and Ames Water Pollution Control Facility

Outline

- National & State-Wide Trends in Rates
- Projected Need for Revenue Increase
- Translating Revenue Needs to Rates
- Customer Perspective
- Council Direction



Water meters lined up on a test bench



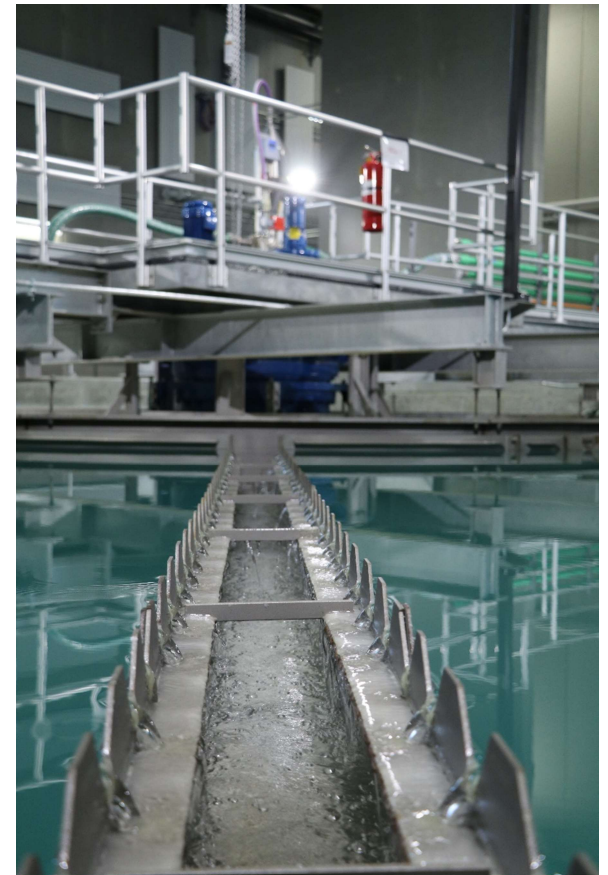
National & State-Wide Trends

Visitors at the inaugural open house tours of the new Ames Water Plant

National and State Trends

Data sources include:

- **2018 Cost of Clean Water Index**
National Association of Clean Water Agencies
- **2019 Water and Wastewater Rate Survey**
American Water Works Association
- **2019 Iowa Water and Wastewater Rate Survey**
City of Ames Water and Pollution Control



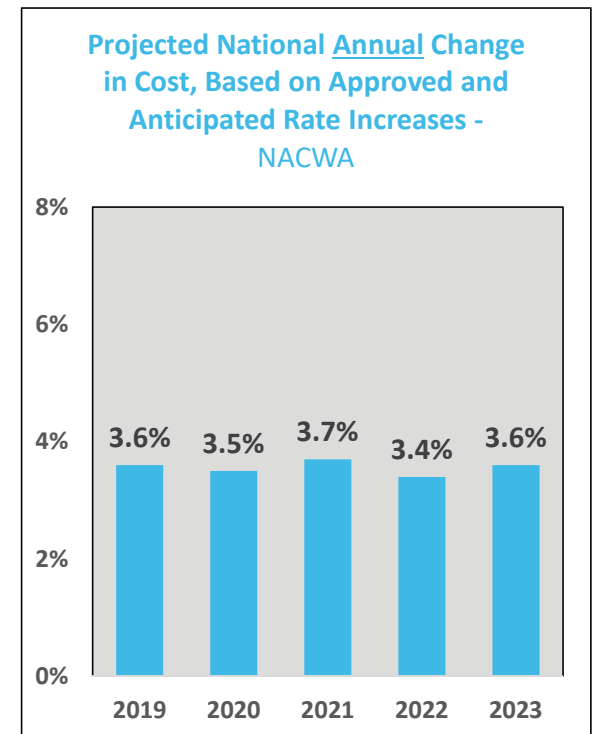
*Solids Contact Unit in service
Ames Water Plant*

National Trends

2018 Cost of Clean Water Index, NACWA

- Average annual wastewater bill has doubled nationally in last 15 years
- Wastewater utilities expect charges to increase from 3.4% to 3.7% per year for the next 5 years
- Nationally, the average increase in 2018 was 1.6x the rate of inflation

(17th consecutive year that sewer rates nationally have outpaced inflation)



National Trends

2019 Water & Wastewater Rate Survey, American Water Works Association

- 79% of Drinking Water Utilities nationally have increased rates in the past two years
- 77% of Wastewater Utilities nationally have increased rates in the past two years.
- Lowest costs for both water and sewer were in the Midwest



*Water main break repair in Ames
circa 1953*

National Trends

2014 to 2019

Average Annual Increase in Water Rates: 4.8%

Average Annual Increase in Sewer Rates: 4.1%

Average Annual Increase in CPI: 2.0%

Sources: 2014 Water and Wastewater Rate Survey, AWWA/Raftelis Financial Consultants
2019 Water and Wastewater Rate Survey, AWWA/Raftelis Financial Consultants



Cogeneration switchgear
Ames Water Pollution Control Facility

Recent Rate Adjustments in Ames

	Water	Sewer
FY 15/16	4%	5%
FY 16/17	--	--
FY 17/18	--	--
FY 18/19	3.5%	3%
FY 19/20	7%	--
Annual Average	2.9%	1.6%



*pH meter and buffers
Ames Water Plant*

Ames Trends vs. National Trends

Water

National Average Annual Increase: 4.8%

Ames Average Annual Increase: 2.9%

Sewer

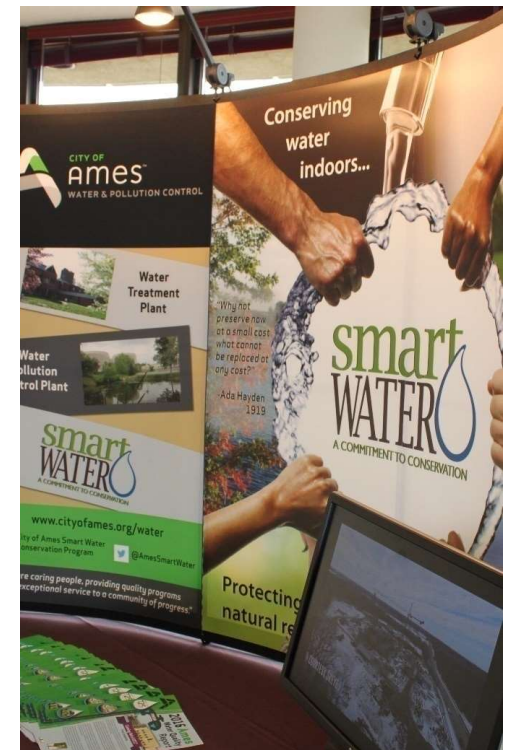
National Average Annual Increase: 4.1%

Ames Average Annual Increase: 1.6%

Average Annual Increase in CPI: 2.0%

National and CPI Data: 2014 – 2019

Ames Data: 2015 – 2019



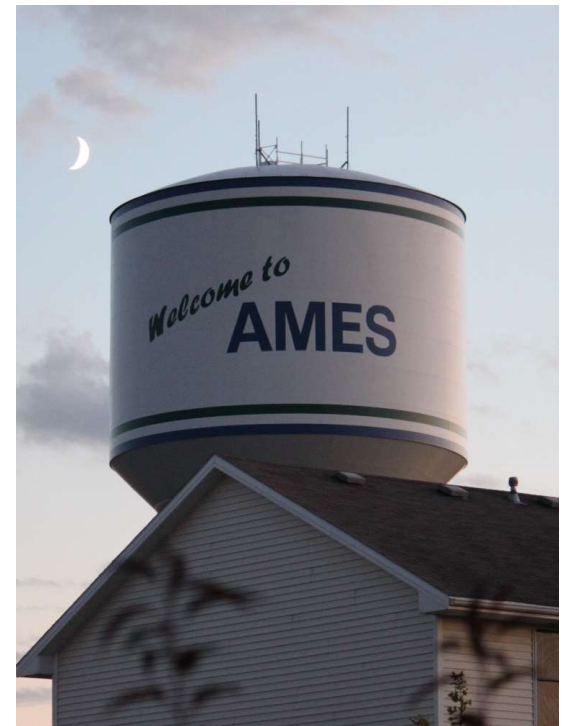
Smart Water Conservation Promotion
Water & Pollution Control Dept.

Iowa Trends

2019 Iowa Water & Wastewater Rate Survey, City of Ames, Iowa

Percent of Utilities with a rate increase in past two years:

- Drinking Water: 76% (22 of 29)
 - More than 5%: 59% (17 of 29)
 - More than 10%: 28% (8 of 29)
- Wastewater: 72% (31 of 43)
 - More than 5%: 53% (23 of 43)
 - More than 10%: 23% (10 of 43)



*Bloomington Road Elevated Tank
at sunset*

Ames Trends vs. Iowa Trends

2015-2019 Trends

Water

Iowa Average Annual Increase: 5.9%

Ames Average Annual Increase: 2.9%

Sewer

Iowa Average Annual Increase: 5.1%

Ames Average Annual Increase: 1.6 %

Average Annual Increase in CPI: 2.0%

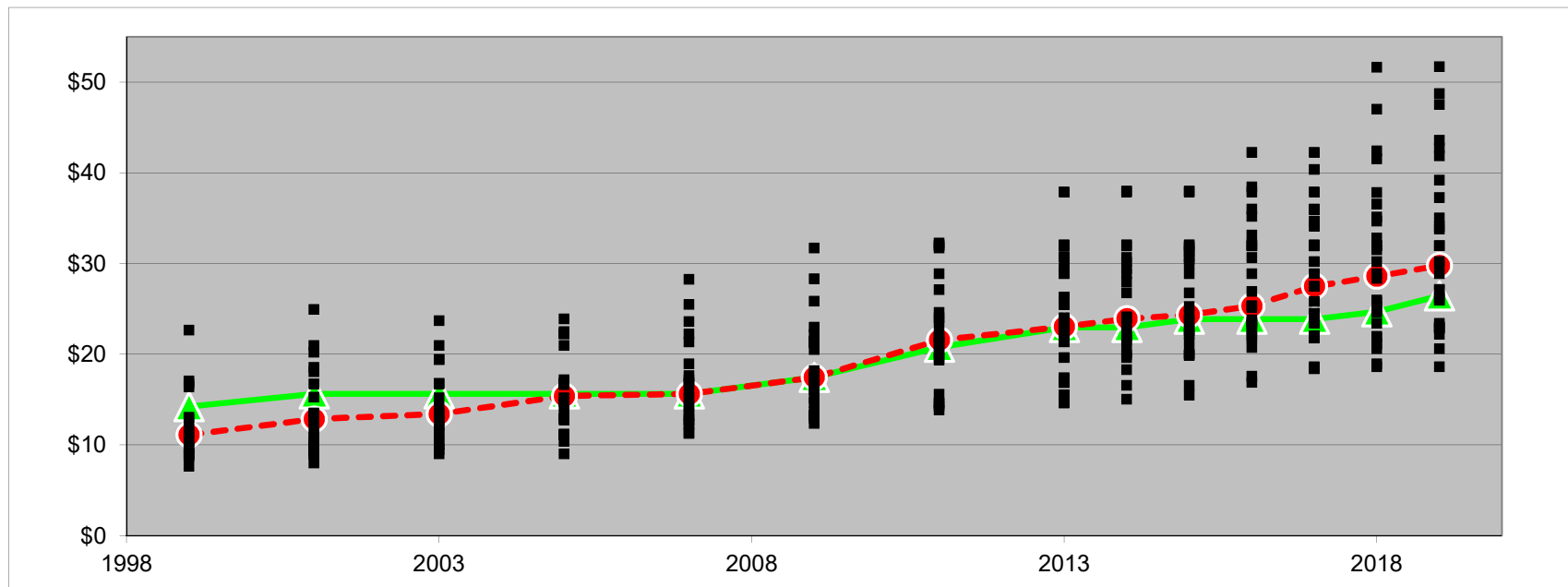
Iowa, Ames, and CPI Data: 2015 – 2019



*1 million gallon elevated tank
Mortensen Road and County Line Road*

Iowa Trends in Water Rates

1999-2019, Cities with population >10,000 with lime softening, 600 cf per month

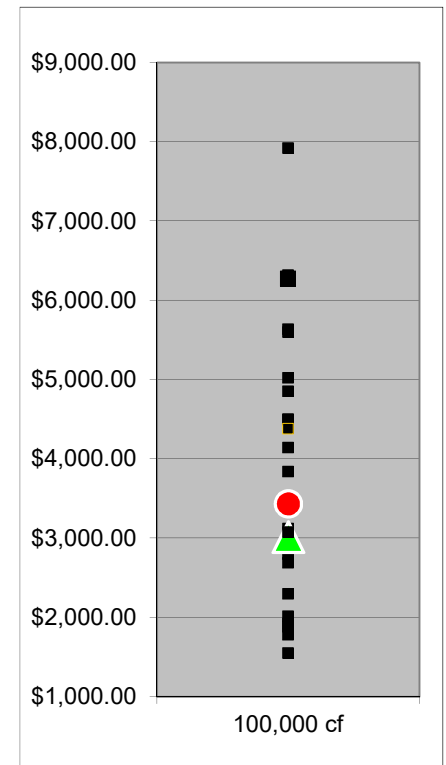
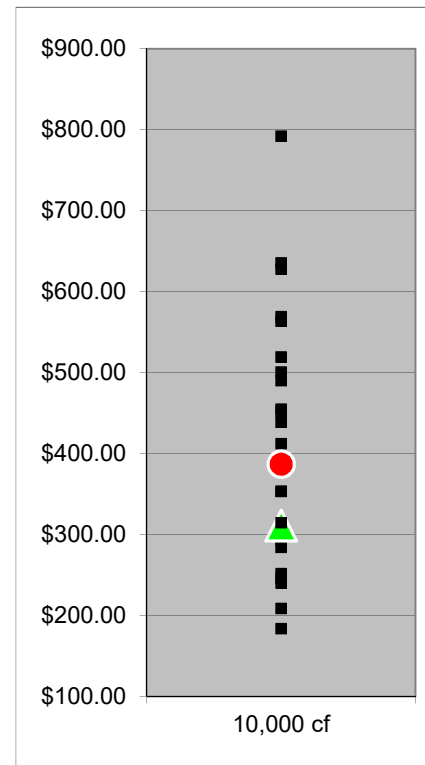
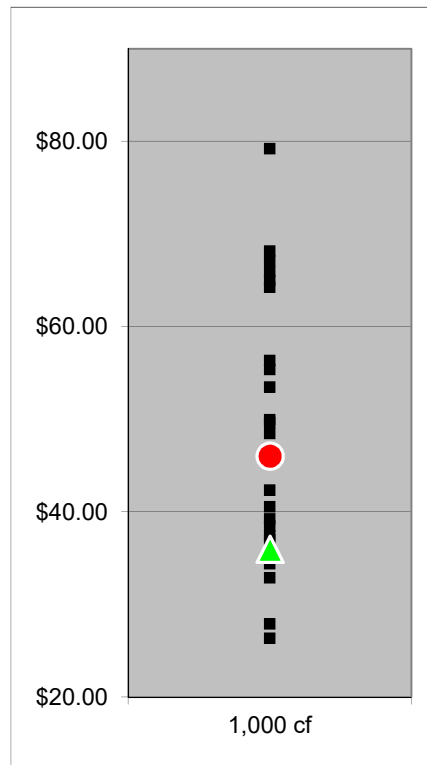
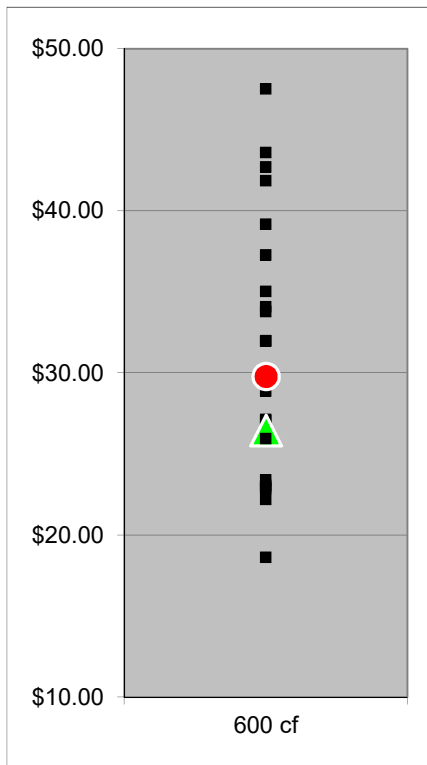


---● Statewide Median —◆ Ames Rates

Ames is at the 36th percentile, based on 2019 rates

Comparing Across Water Demand Thresholds

Cities with population >10,000 with lime softening, 2019

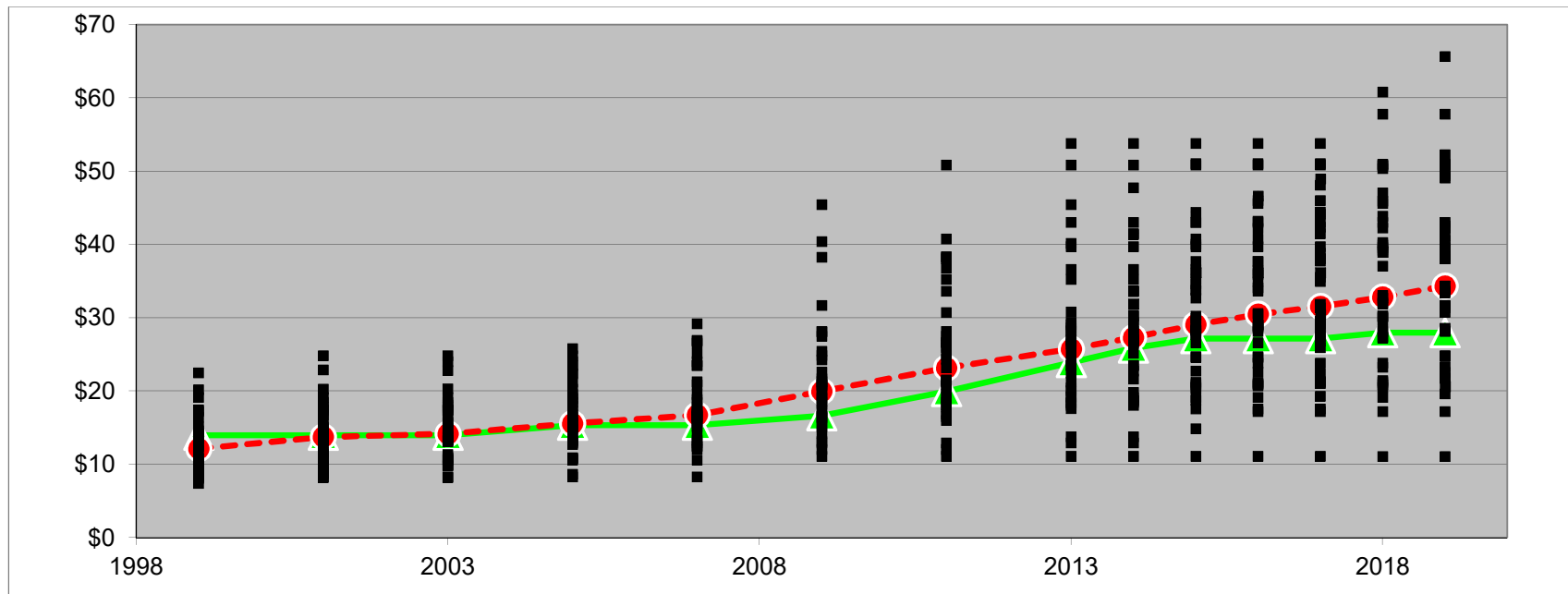


● Statewide Median

▲ Ames Rates

Iowa Trends in Sewer Rates

1999-2019, Cities with population >10,000, 600 cf per month

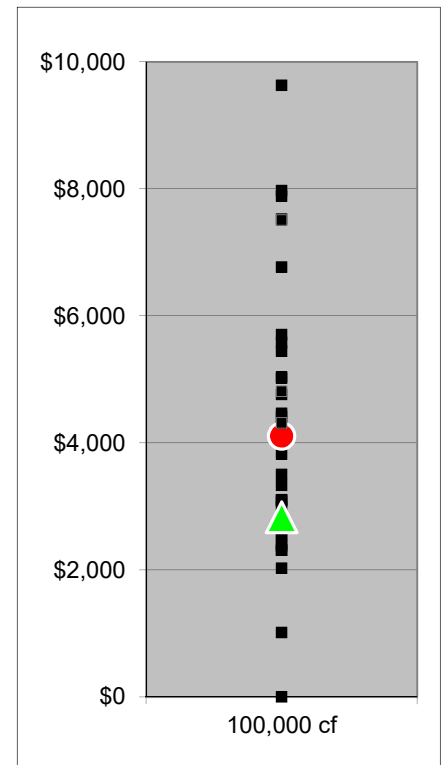
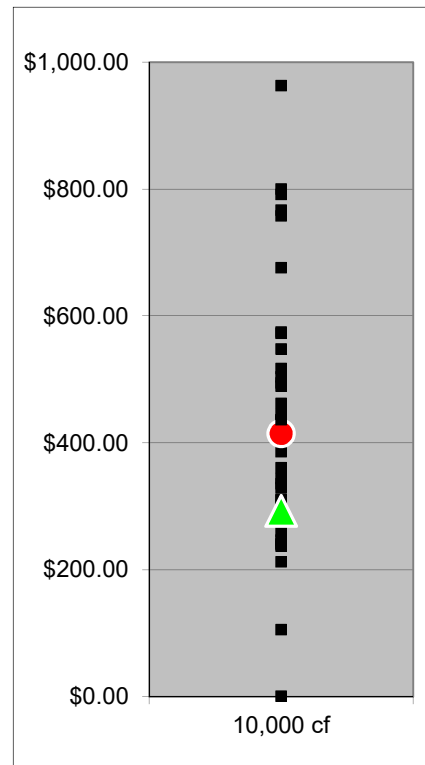
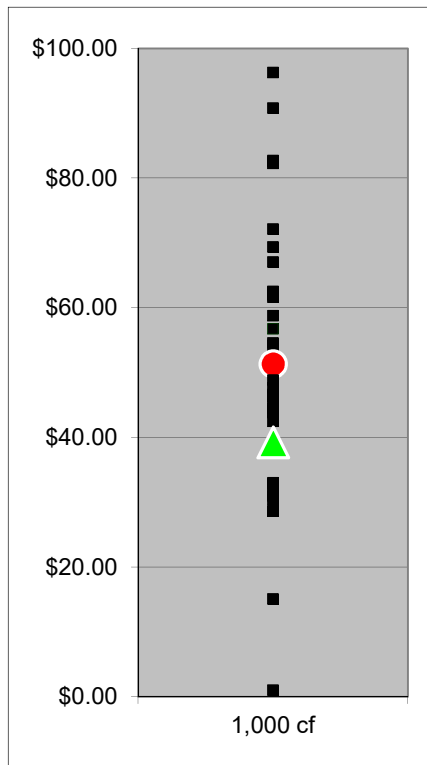
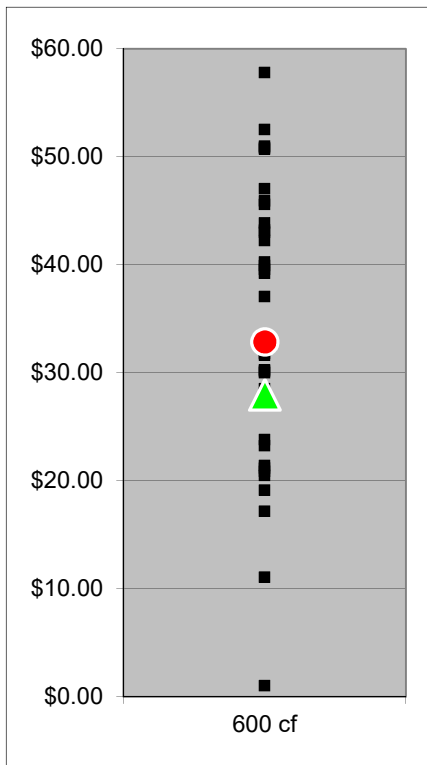


---● Statewide Median —◆ Ames Rates

Ames is at the 24th percentile, based on 2019 rates

Comparing Across Sewer Demand Thresholds

Cities with population >10,000, 2019



● Statewide Median

▲ Ames Rates

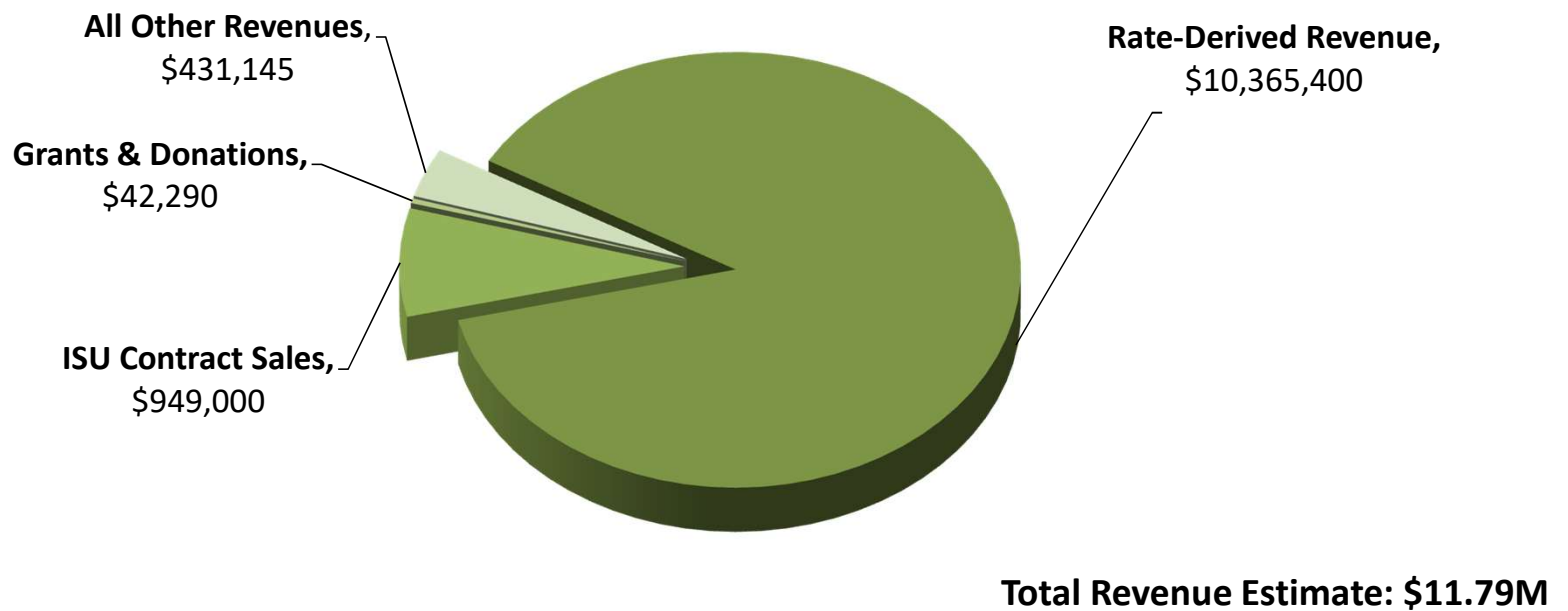


Revenue Need and Rate Adjustments in Ames

*Best Tasting Water in Iowa
2017 & 2018*

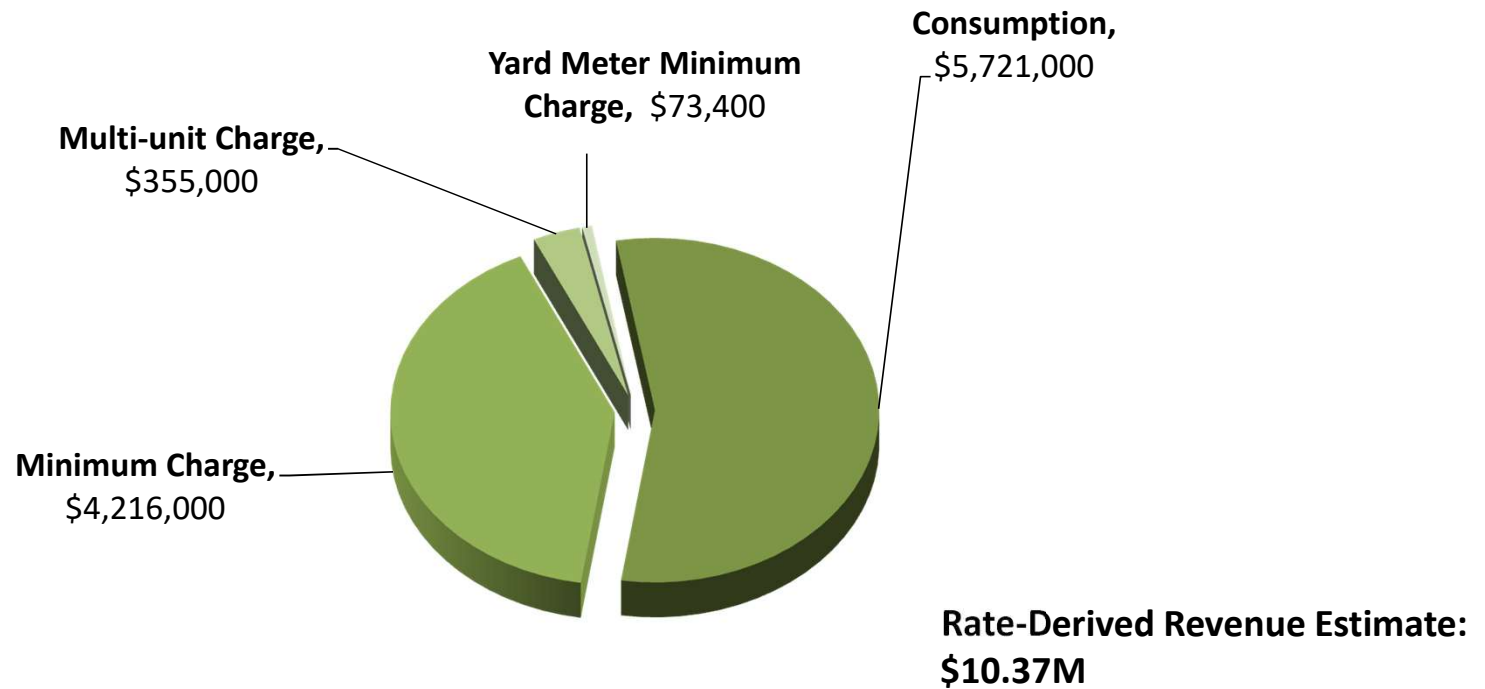
Water Revenue Sources

FY 19/20 Amended Budget



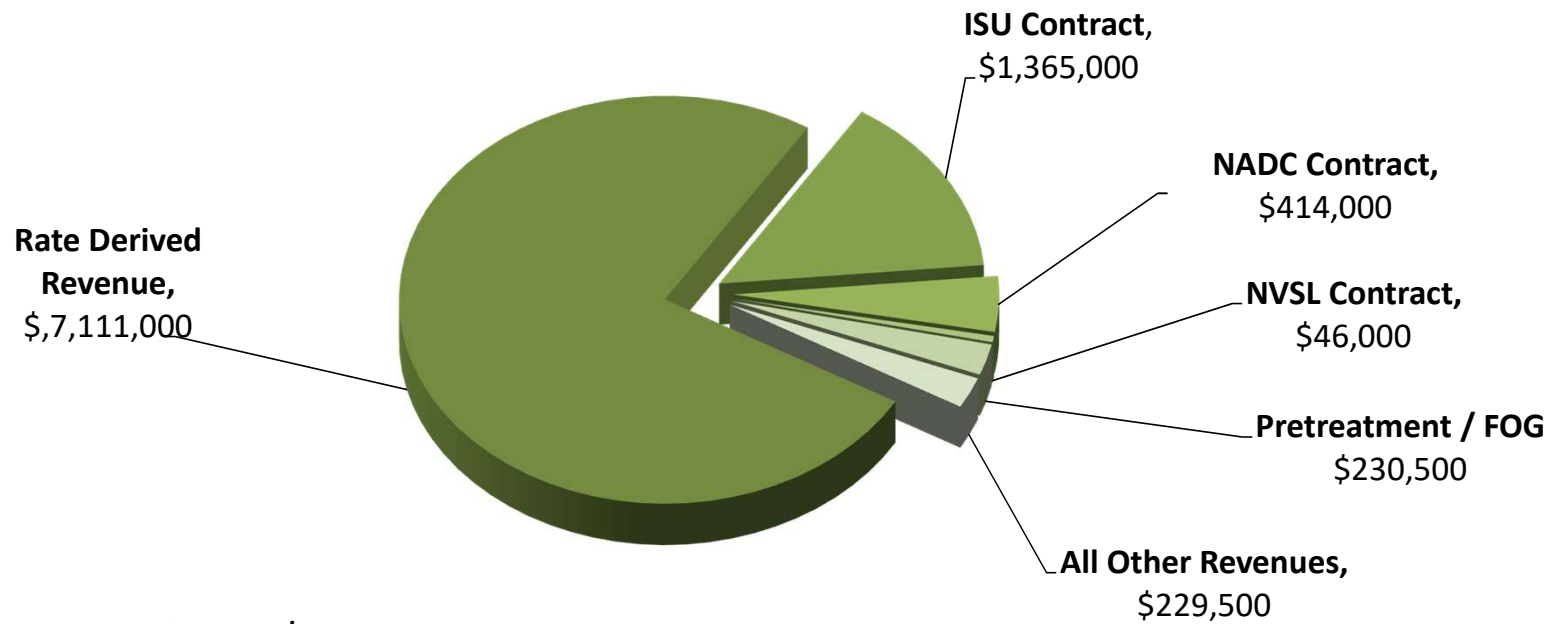
Water Rate-Derived Revenue

FY 19/20 Amended Budget



Sewer Revenue Sources

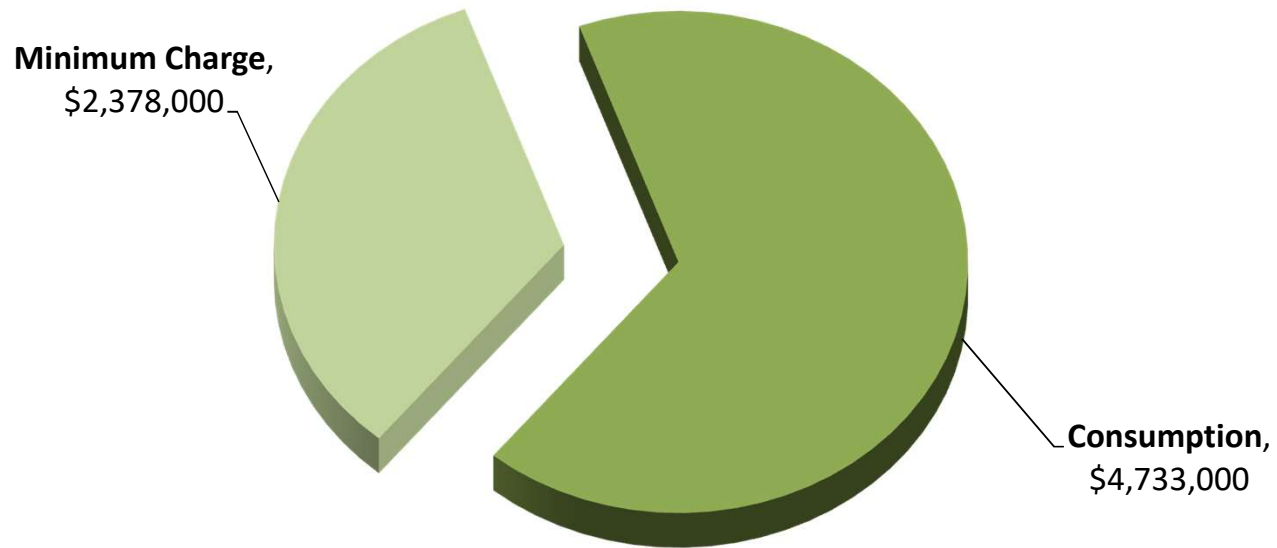
FY 19/20 Amended Budget



Total Revenue Estimate: \$9.40M

Sewer Rate-Derived Revenue

FY 19/20 Amended Budget



**Rate-Derived Revenue Estimate:
\$7.11M**

Current Water Rates (\$/cf)

Winter

All customers; all consumption \$0.0238

Summer

Residential

Block 1 (First 1,000 cf)
Block 2 (Next 1,500 cf) \$0.0238
Block 3 (Over 2,500 cf) \$0.0420

Irrigation & Yard Water \$0.0631

Block 1 (First 2,000 cf)
Block 2 (Next 3,000 cf) \$0.0343
Block 3 (Over 5,000 cf) \$0.0631
\$0.1051

Non-Residential

All consumption \$0.0311

Non-Peaking Industrial

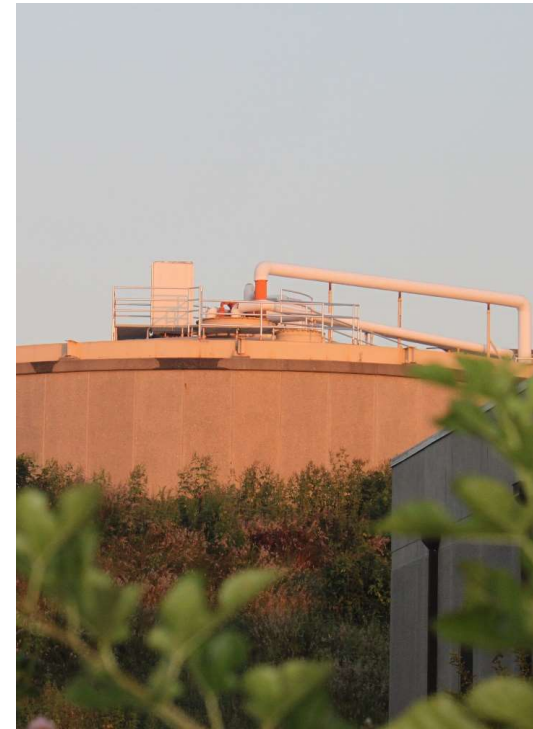
All consumption \$0.0238



*Piping in High Service Pump Room
Ames Water Plant*

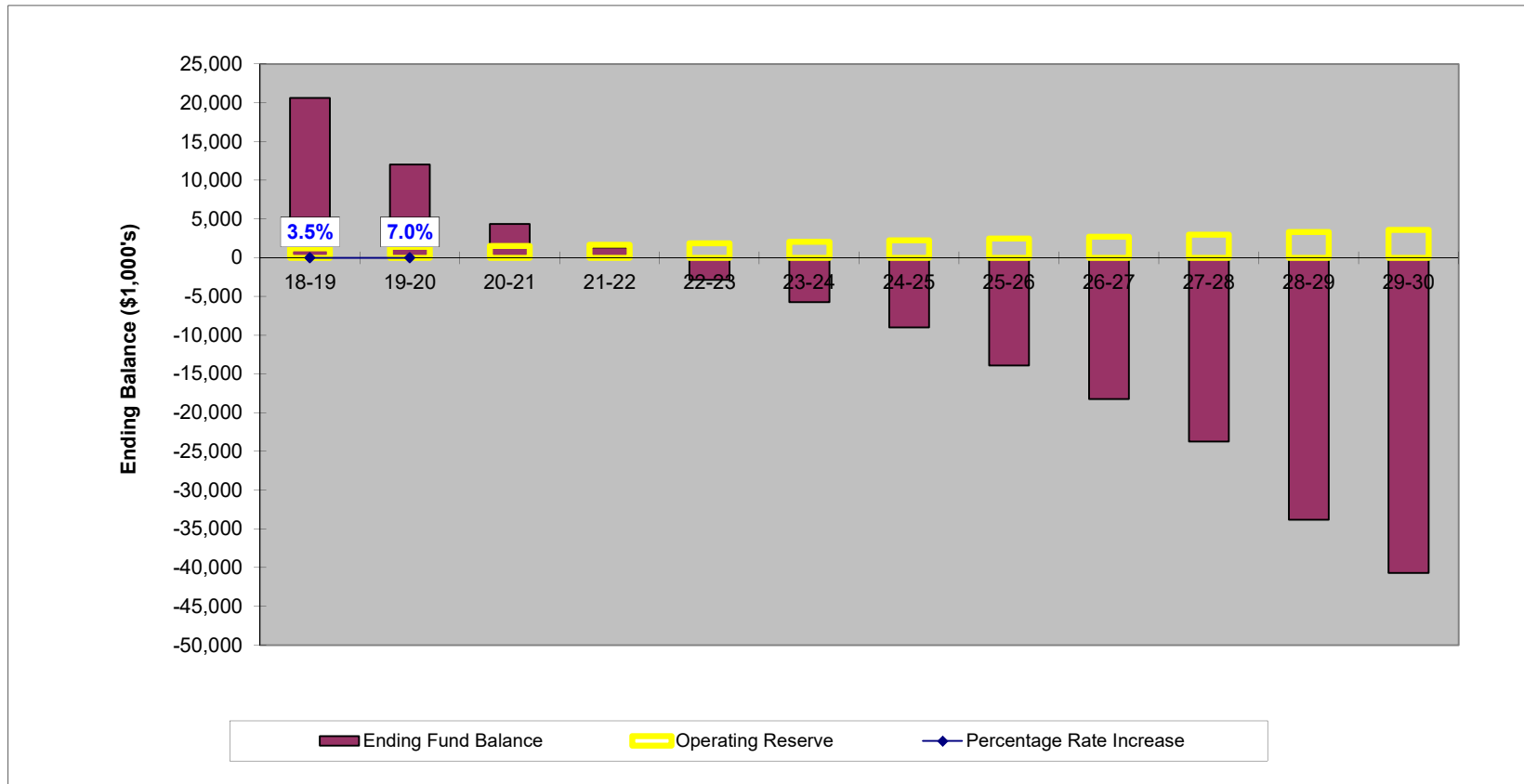
Current Sewer Rates (\$/cf)

Minimum Charge	\$11.03
All customers, per month	
Prorated Minimum	\$4.24
Consumption, per 100 cubic feet	\$2.82
All customers, all consumption	

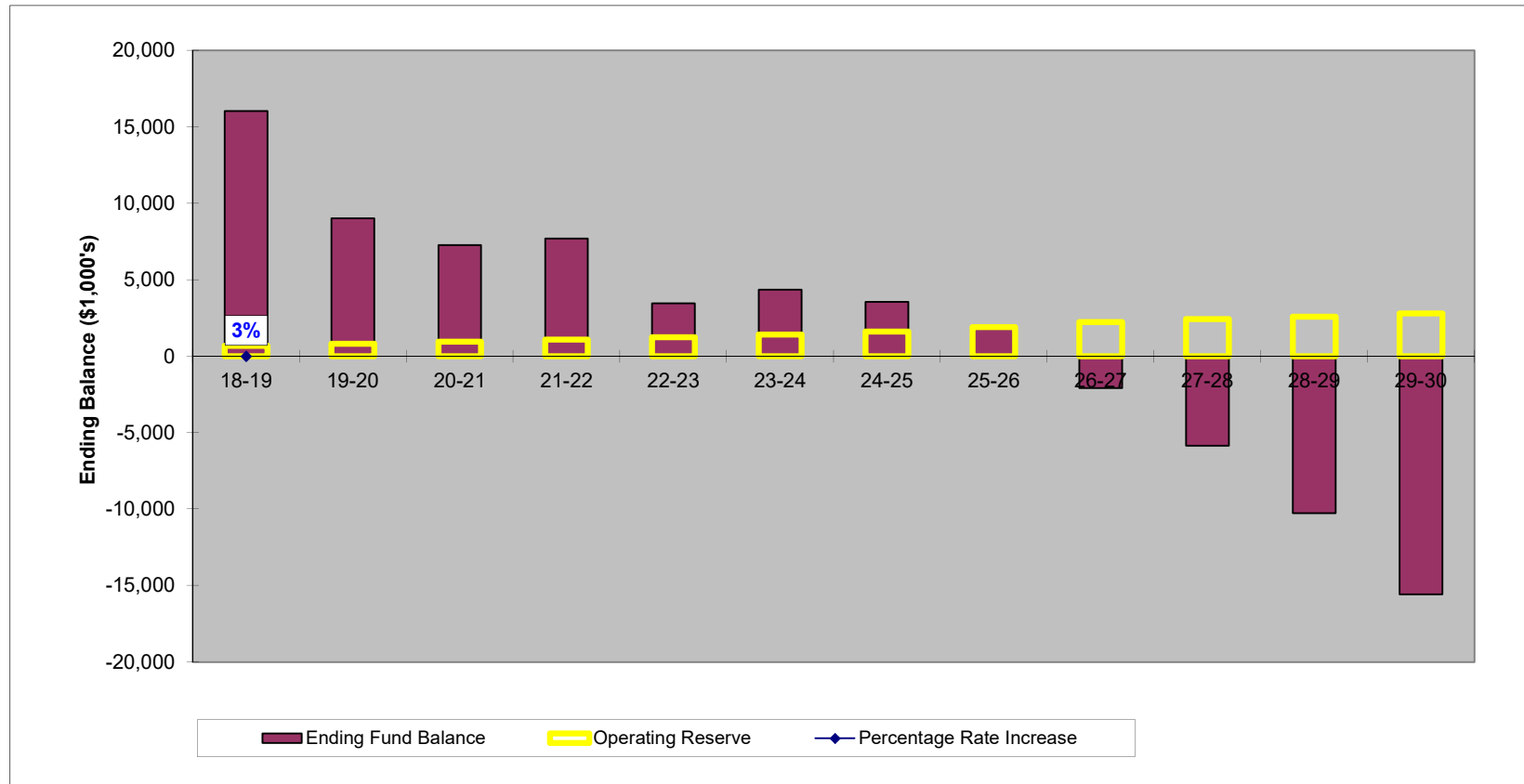


*Primary Digester
Ames Water Pollution Control Facility*

Water Fund Rate Model – No Adjustments



Sewer Fund Rate Model – No Adjustments





Developing Rate Recommendations

*Old Water Pollution Control Facility
Circa 1955*

Guiding Philosophy on Rates

- Rate increases should be done with smaller percentage increases on a more frequent basis, as opposed to larger increases on a less frequent basis.
- Slowly grow the operating reserve in each Fund over time until it reaches 25% of the Fund's annual operating expenses



Limestone sign salvaged from the 1924 water plant, relocated to the new facility

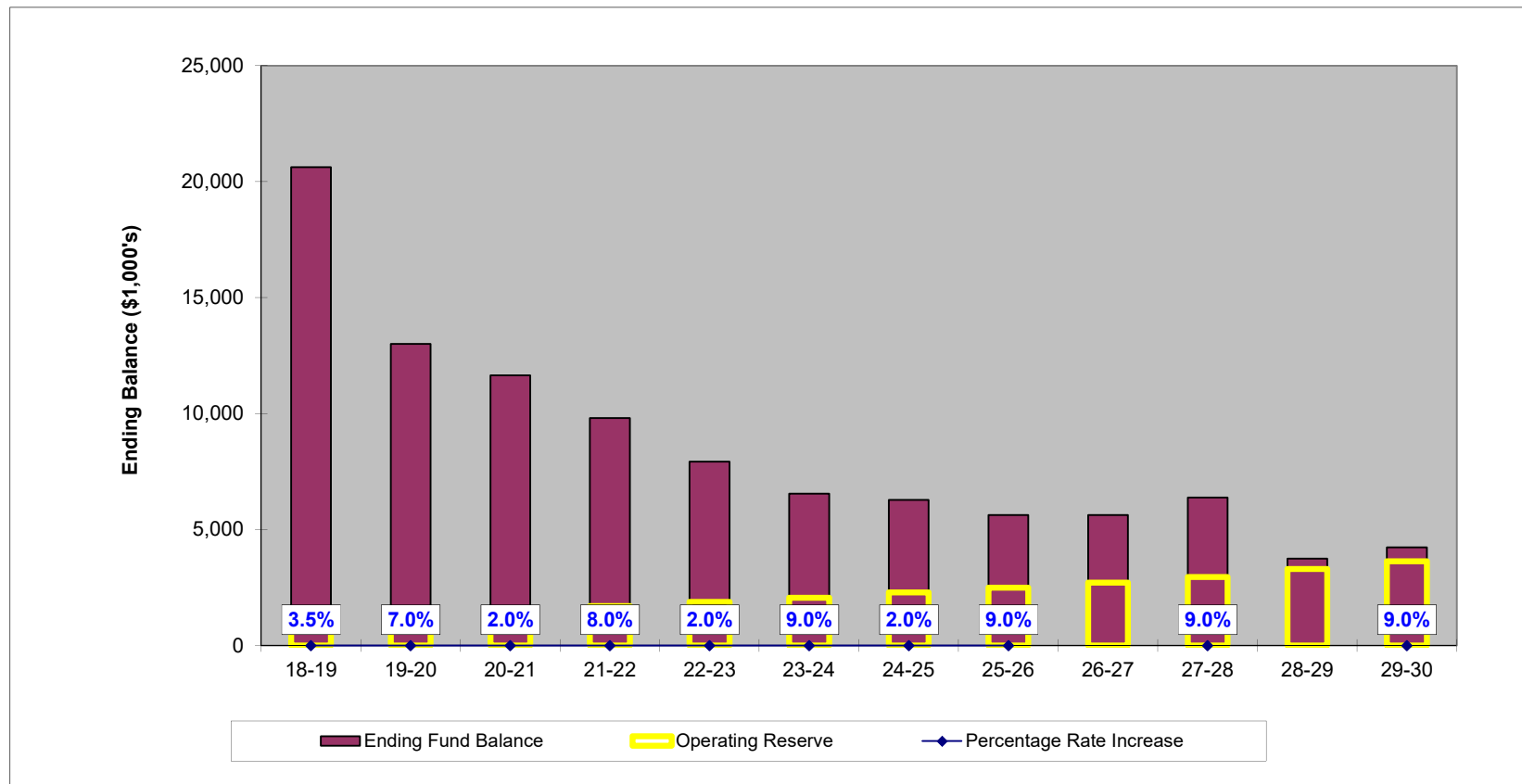
Water and Sewer Rate Projections

	Last Year	Current Year	Year 1	Year 2	Year 3	Year 4	Year 5	Year 6	Year 7	Year 8	Year 9	Year 10
	18-19	19-20	20-21	21-22	22-23	23-24	24-25	25-26	26-27	27-28	28-29	29-30
Water Fund	3.5%	7%	2%	8%	2%	9%	2%	9%		9%		9%
Sewer Fund	3%		5%		5%		8%		8%		8%	

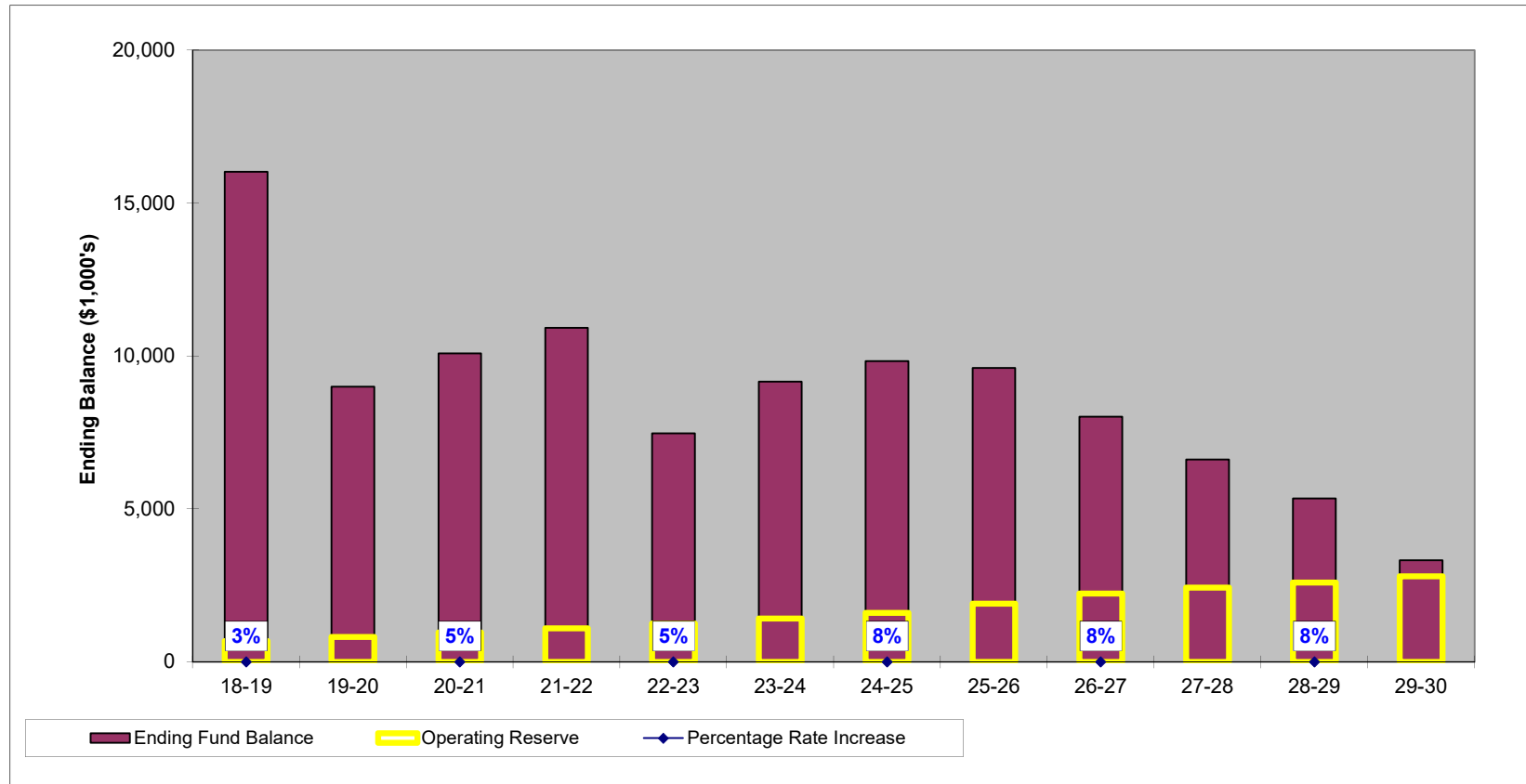


2016 open house tours
Ames Water Pollution Control Facility

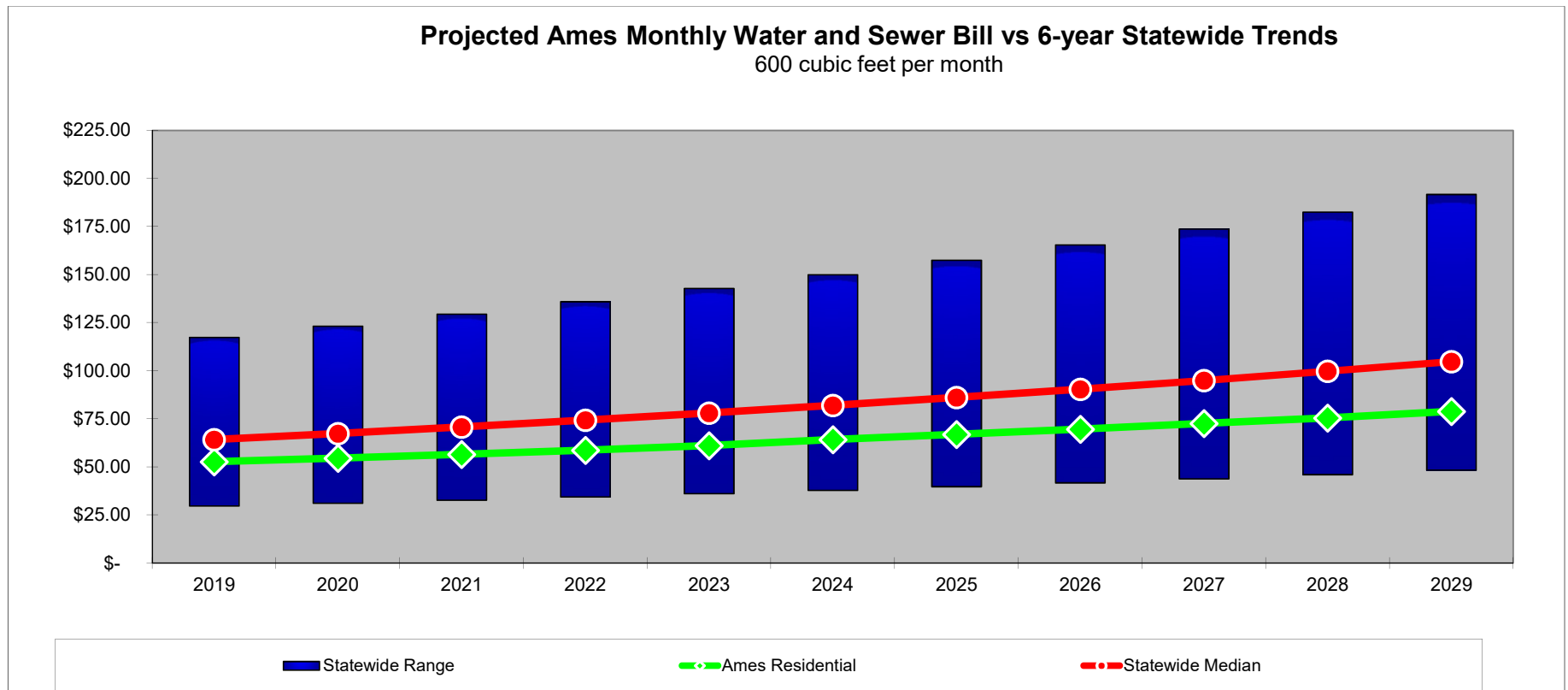
Water Fund Rate Model



Sewer Fund Rate Model



Rate Projections vs. Statewide Trends



Revised Water Rates

	<u>Existing</u>	<u>2% Increase</u>	<u>New</u>
Winter			
All customers; all consumption	\$0.0238	\$0.0005	\$0.0243
Summer			
Residential			
Block 1 (First 1,000 cf)			
Block 2 (Next 1,500 cf)	\$0.0238	\$0.0005	\$0.0243
Block 3 (Over 2,500 cf)	\$0.0420	\$0.0008	\$0.0428
Irrigation & Yard Water	\$0.0631	\$0.0013	\$0.0644
Block 1 (First 2,000 cf)			
Block 2 (Next 3,000 cf)	\$0.0343	\$0.0007	\$0.0350
Block 3 (Over 5,000 cf)	\$0.0631	\$0.0013	\$0.0644
	\$0.1051	\$0.0021	\$0.1072
Non-Residential			
All consumption	\$0.0311	\$0.0006	\$0.0318
Non-Peaking Industrial			
All consumption	\$0.0238	\$0.0005	\$0.0243



*Bloomington Road Elevated Tank (BRET)
as seen from above*

Revised Sewer Rates

	<u>Existing</u>	<u>5% Increase</u>	<u>New</u>
Minimum Charge All customers, per month	\$11.03	\$0.55	\$11.58
Prorated Minimum	\$4.24	\$0.21	\$4.45
Consumption, per 100 cubic feet All customers, all consumption	\$2.82	\$0.14	\$2.96



*Entry sign into the Trickling Filter Pump Station
Ames Water Pollution Control Facility*

Associated Rates and Fees

- Water minimum bills, multiple dwelling unit fees would also adjust by 2%
- Sewer high-strength surcharge, FOG, hauled waste, other sewer-associated fees would adjust by 5%
- Meter setting fees would be adjusted based on actual cost recovery
- Add and adjust fees for selected laboratory analytes



*Solids Contact Unit Effluent Weir
Ames Water Plant*



Customer Perspective

*Visitors waiting to tour new Water Plant
2017 Ribbon-cutting Ceremony*

Sample Customer Bill – Median Use Residential

Electric / Water Use	Electric Summer	Storm Water	Water Summer	Sewer	Total
600 kWh and 600 cf	\$81.10	\$4.95	\$26.44	\$27.95	\$140.44
Electric ECA	-\$3.96				-\$3.96
Totals	\$77.14	\$4.95	\$26.44	\$27.95	\$136.48
Increase Due to Rate Change	\$0.00	\$0.00	\$0.53	\$1.40	\$1.93
Totals	\$77.14	\$4.95	\$26.97	\$29.35	\$138.41
% Impact on Total Bill					1.41%

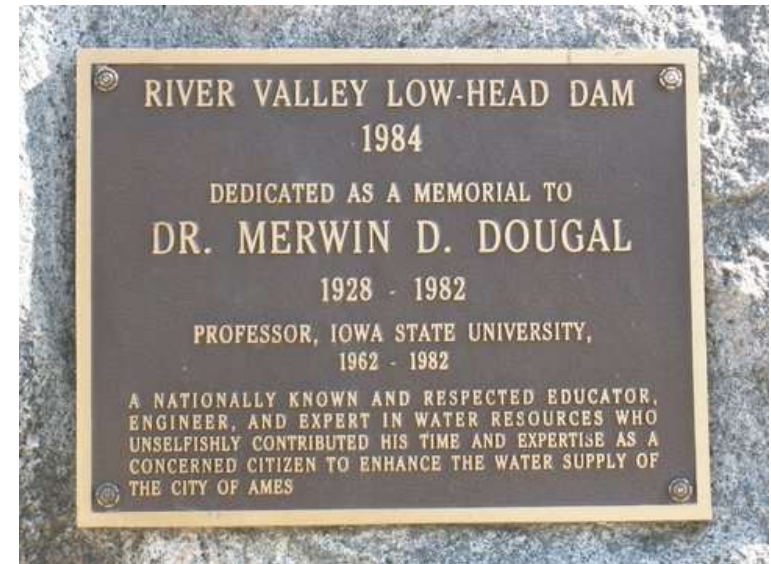


Council Direction

City Council Members serving during design and construction of the new Ames Water Treatment Plant

Recommended Direction & Timeline

- Adopt on first reading an ordinance to
 - Adjust **Water Rates by 2%**
 - Adjust **Sewer Rates by 5%**
 - New rates **effective July 1, 2020**
- Timeline
 - First reading on **February 25 (tonight)**
 - Second reading on **March 10**
 - Third reading and adoption on **March 24**



*Memorial plaque at the Low head Dam
Located in North River Valley Park*



FY 2020-2021 Water & Sewer Rates

March 10, 2020

Entry signage at the Ames Water Treatment Plant and Ames Water Pollution Control Facility



Additional Rate Samples

Ames Water Pollution Control Facility

Sample Customer Bill – Minimal Use Residential

Electric / Water Use	Electric Summer	Storm Water	Water Summer	Sewer	Total
100 kWh and 100 cf	\$20.45	\$4.95	\$14.54	\$13.85	\$53.79
Electric ECA	-\$0.66				-\$0.66
Totals	\$19.79	\$4.95	\$14.54	\$13.85	\$53.13
Increase Due to Rate Change	\$0.00	\$0.00	\$0.29	\$0.69	\$0.98
Totals	\$19.79	\$4.95	\$14.83	\$14.54	\$54.11
% Impact on Total Bill					1.84%

Sample Customer Bill – Median Use Residential

Electric / Water Use	Electric Summer	Storm Water	Water Summer	Sewer	Total
600 kWh and 600 cf	\$81.10	\$4.95	\$26.44	\$27.95	\$140.44
Electric ECA	-\$3.96				-\$3.96
Totals	\$77.14	\$4.95	\$26.44	\$27.95	\$136.48
Increase Due to Rate Change	\$0.00	\$0.00	\$0.53	\$1.40	\$1.93
Totals	\$77.14	\$4.95	\$26.97	\$29.35	\$138.41
% Impact on Total Bill					1.41%

Sample Customer Bill – Large Residential

Electric / Water Use	Electric Summer	Storm Water	Water Summer	Sewer	Total
1,000 kWh and 1,000 cf	\$129.62	\$4.95	\$35.96	\$39.23	\$209.76
Electric ECA	-\$6.60				-\$6.60
Totals	\$123.02	\$4.95	\$35.96	\$39.23	\$203.16
Increase Due to Rate Change	\$0.00	\$0.00	\$0.72	\$1.96	\$2.68
Totals	\$123.02	\$4.95	\$36.68	\$41.19	\$205.84
% Impact on Total Bill					1.32%

Sample Customer Bill – Small Commercial (GP)

Electric / Water Use	Electric Summer	Storm Water	Water Summer	Sewer	Total
2,000 kWh and 600 cf Electric ECA	\$254.40 -\$13.20	\$4.95	\$30.82	\$27.95	\$318.12 -\$13.20
Totals	\$241.20	\$4.95	\$30.82	\$27.95	\$304.92
Increase Due to Rate Change	\$0.00	\$0.00	\$0.62	\$1.40	\$2.02
Totals	\$241.20	\$4.95	\$31.44	\$29.35	\$306.94
% Impact on Total Bill					0.66%

Sample Customer Bill – Small Commercial (GP)

Electric / Water Use	Electric Summer	Storm Water	Water Summer	Sewer	Total
5,000 kWh and 1,000 cf	\$612.60	\$4.95	\$43.26	\$39.23	\$700.04
Electric ECA	-\$33.00				-\$33.00
Totals	\$579.60	\$4.95	\$43.26	\$39.23	\$667.04
Increase Due to Rate Change	\$0.00	\$0.00	\$0.87	\$1.96	\$2.83
Totals	\$579.60	\$4.95	\$44.13	\$41.19	\$669.87
% Impact on Total Bill					0.42%

Sample Customer Bill – Small Commercial (GP)

Electric / Water Use	Electric Summer	Storm Water	Water Summer	Sewer	Total
10,000 kWh and 3,000 cf	\$1,209.60	\$9.90	\$117.62	\$95.63	\$1,432.75
Electric ECA	-\$66.00				-\$66.00
Totals	\$1,143.60	\$9.90	\$117.62	\$95.63	\$1,366.75
Increase Due to Rate Change	\$0.00	\$0.00	\$2.35	\$4.78	\$7.13
Totals	\$1,143.60	\$9.90	\$119.97	\$100.41	\$1,373.88
% Impact on Total Bill					0.52%

Sample Customer Bill – Commercial (LP)

Electric / Water Use	Electric Summer	Storm Water	Water Summer	Sewer	Total
20,000 kWh and 5,000 cf	\$2,181.81	\$9.90	\$179.82	\$152.03	\$2,523.56
Electric ECA	-\$132.00				-\$132.00
Totals	\$2,049.81	\$9.90	\$179.82	\$152.03	\$2,391.56
Increase Due to Rate Change	\$0.00	\$0.00	\$3.60	\$7.60	\$11.20
Totals	\$2,049.81	\$9.90	\$183.42	\$159.63	\$2,402.76
% Impact on Total Bill					0.47%

Sample Customer Bill – Commercial (LP)

Electric / Water Use	Electric Summer	Storm Water	Water Summer	Sewer	Total
60,000 kWh and 15,000 cf	\$6,221.55	\$14.85	\$515.15	\$434.03	\$7,185.58
Electric ECA	-\$396.00				-\$396.00
Totals	\$5,825.55	\$14.85	\$515.15	\$434.03	\$6,789.58
Increase Due to Rate Change	\$0.00	\$0.00	\$10.30	\$21.70	\$32.00
Totals	\$5,825.55	\$14.85	\$525.45	\$455.73	\$6,821.58
% Impact on Total Bill					0.47%

Sample Customer Bill – Commercial (LP)

Electric / Water Use	Electric Summer	Storm Water	Water Summer	Sewer	Total
100,000 kWh and 20,000 cf	\$10,284.95	\$44.55	\$719.30	\$575.03	\$11,623.83
Electric ECA	-\$660.00				-\$660.00
Totals	\$9,624.95	\$44.55	\$719.30	\$575.03	\$10,963.83
Increase Due to Rate Change	\$0.00	\$0.00	\$14.39	\$28.75	\$43.14
Totals	\$9,624.95	\$44.55	\$733.69	\$603.78	\$11,006.97
% Impact on Total Bill					0.39%