

COUNCIL ACTION FORM

SUBJECT: ALL INCLUSIVE PLAYGROUND & MIRACLE LEAGUE FIELD DESIGN

BACKGROUND:

In September 2016, the Parks & Recreation Commission recommended to City Council that an All Inclusive Playground and Miracle League Field be placed in Inis Grove Park. However, the Commission also requested to review the design, once developed, to understand how the neighbors' concerns were going to be addressed. City Council then approved Inis Grove as the location at its October 25, 2016 meeting. There was concern expressed by some Council Members regarding the proposed lighting of the field and sound system based on concerns expressed by some residents from the adjacent neighborhood. **Staff indicated Council members would have the opportunity to review the plans before they are finalized so that you are satisfied with how the concerns of the neighbors are being addressed. Therefore, the purpose of this agenda item is allow the City Council to review the proposed plans and make any revisions if desired.**

The City Council appropriated \$50,000 to develop a design for the playground and field. As a reminder, the City is funding the design, as well as, the development of plans and specifications for the project. The plans will then be turned over to the Ames Foundation so they can work with the Miracle Project Steering Committee to fundraise the money to construct the playground and field. Once the project is complete, the Ames Foundation will then donate the amenities to the City.

Through the design consultant selection process, Snyder and Associates from Ankeny was selected to design the project. Snyder has designed the Ankeny and Urbandale playgrounds and fields so they are familiar with the intricacies of these two amenities. Staff held a design kickoff meeting and explained we are looking for a design that is different from Ankeny and Urbandale and also addresses the neighbors' concerns as much as possible. Snyder received all of the Commission and Council documents related to this topic so they could fully understand the issues associated with this project.

NEIGHBORS CONCERNS:

One of the common threads throughout the conversations related to the All Inclusive Playground and Miracle League Field in Inis Grove Park has been addressing concerns from the neighbors. Snyder has developed a design to include many features and has offered ways to mitigate the concerns as much as possible. Below are the concerns that had been expressed prior to the design being developed and how they are being addressed in the design.

Preservation of Green Space

The design leaves approximately 3.5 acres of green space to be used for any purpose. Currently there are four acres of green space. Keeping the southern edge of the playground design very near the southern edge of the current playground has helped preserve the open space.

Impact on Park Aesthetics

The design is very creative in the use of separate play areas with trees and green space between areas. The use of the contour changes to create elevated components that do not obstruct tree views helps preserve the aesthetics. The addition of trees and plant material also helps this purpose.

Addition of Lights on the Miracle Field

Adding lights will provide additional programming opportunities for the field. This could include kickball, tee ball, wellness classes, and Special Olympics. In Attachment A, you will see how the current technology directs light to the field with little spillover beyond the field boundaries. Neighbors will see the lights, however, it will not light up someone's yard. The lights will be programmable and operated only by Parks and Recreation staff. Park users will not be able to push a button to turn on the lights which is how it is for the tennis and basketball courts.

Sound System

Having a sound system adds a component to Miracle League games that truly enhances the players and spectators experience. It also provides a mechanism to alert field helpers to protect fielders when certain players are at bat. The design has the speakers facing to the northeast, away from residences which will help reduce the noise level for neighbors. The sound system is proposed to be used for Miracle League games on Saturdays and an occasional special event (e.g. last night of tee ball). The volume limits will also be set by Parks and Recreation staff for these activities.

Addition of a Scoreboard

The design includes a scoreboard beyond the center field fence. The lighted side of the scoreboard will face away from residences.

Traffic on Duff Avenue

A four way stop has been installed on 24th Street and Duff Avenue to alleviate some of the traffic concerns. This will provide a controlled intersection for pedestrians to cross the street and help vehicles cross Duff Avenue as well.

Parking on 24th Street and Broadmoor Avenue

Instituting no parking on the south side of 24th Street (east of Duff Avenue) and the west side of Broadmoor Avenue (24th Street to Duff Avenue) will be discussed at the May 23 City Council meeting. This action is in response to the request by neighbors living on these two streets.

Safety along the Ravine

Included in the design is a fence along the ravine. Fencing styles being considered are those that are not easily climbed.

Storm Water Control

There are several bio swales incorporated into the design to control storm water. These bio swales will be dry most of the time and are designed to hold storm water for no more than two hours. The storm water runoff will eventually make its way to the ravine which is where it goes currently.

PUBLIC MEETING FEEDBACK:

On May 11, 2017, a public meeting was held to share the playground and field design and to gather input. The power point presentation from the meeting is included as Attachment A. Attendees were asked to complete a questionnaire and those comments are listed in Attachment B. The presentation and questionnaire were also posted on-line for those who could not attend the meeting. Additional feedback received is included in Attachment C.

The meeting was mostly positive in nature and there was good dialogue regarding what attendees liked, as well as, any concerns they had. Attachment B gives a good overview of the attendee's reaction. To summarize, people liked the creative design, the separate play areas, taking neighbors' concerns into account, the preservation of green space, and the different components and challenge levels. On the other hand, there are still concerns related to 1) lights on the Miracle League Field, 2) the sound system, 3) color choices for equipment and surfacing, and 4) fencing.

To expand further on comments received on May 11 related to these four concerns, more detail follows:

- 1) **Lights on the Miracle Field** – There are still questions as to whether lights are needed since Miracle League games are held during the daylight. The addition of lights will provide the opportunity to program this facility at times when daylight is diminished.
- 2) **Sound System** – Some feel it is inappropriate to place a sound system in the park while others feel it is a critical component for Miracle League games. There is a child living south of the park that is negatively impacted by noise which is a concern. Staff feels the design will reduce the amount of sound being heard by neighbors. It should also be noted there are a lot of noises that cannot be controlled (i.e. children's laughter and screams, park users playing music, road traffic noise, etc.).
- 3) **Color Choices for Equipment and Surfacing** – Although we have a variety of bright colored playgrounds throughout the park system, the neighbors of Inis Grove Park have requested natural tones for this playground. That is what is being planned for this playground. One issue that is being discussed with the playground manufacturer is how to differentiate different areas for the visually impaired. A common practice is to use contrasting bright colors to make this differentiation. The consultant is continuing to pursue alternative ways to do this without using bright colors.
- 4) **Fencing Around the Entire Playground** – Some attendees asked about a fence around the entire playground due to some children being a flight risk. The design does have a fence that blocks off the ravine and to some extent the parking lots. There is also the open space to the south which creates a buffer between the playground and 24th Street.

PARKS AND RECREATION COMMISSION RECOMMENDATION:

The design was presented to the Commission at its May 18, 2017 meeting and was received positively. Commission members were excited about the design and thanked Snyder and Associates for their work on developing a creative design and addressing the concerns that have been brought forth. Members did ask about fence height along the ravine (it will be 4-6 feet tall), are the drawings to scale (yes, they are), and are there concerns about erosion in the ravine related to this project (Snyder indicated no).

Martin Edelson, representing the Inis Grove Neighborhood Association, had two questions for the Commission. 1) Is it possible to run utilities for lights but not put up the poles at this time and wait to see if lights are really needed?, and 2) Will all of the money needed to construct these amenities be in hand before construction begins? The fear is that the project will start, the site will be torn up, and the construction will

stop because more money is needed. The Parks and Recreation Director has had conversation with the Ames Foundation and Steering Committee regarding the money needing to be secured before construction begins.

The Commission did discuss the possibility of developing a policy regarding the use of lights on the Miracle League Field and sound system in Inis Grove Park.

ALTERNATIVES:

1. Approve the design for the All Inclusive Playground and Miracle League Field in Inis Grove Park as presented.
2. Approve the design for the All Inclusive Playground and Miracle League Field in Inis Grove Park as presented except with no lights at the Miracle League Field.
3. Approve the design for the All Inclusive Playground and Miracle League Field in Inis Grove Park as presented except with no sound system at the Miracle League Field.
4. Approve the design for the All Inclusive Playground and Miracle League Field in Inis Grove Park as presented except with modifications specified by the Council.
5. Refer back to staff for further revision of the proposed design.

CITY MANAGER'S RECOMMENDED ACTION:

The design developed by Snyder and Associates is very creative and creates a unique experience for the user. The variety of elements provides opportunities for individuals of all ages and abilities. Incorporating the design into the topography of the area also utilizes mature trees to provide shade and get people closer to nature. Open green space has been preserved by positioning the field and playground as far north as possible without the need to remove many trees. In fact, it is proposed to remove two large trees which have been determined to be hazard trees. There will also be some removal of the understory which are mainly invasive species.

Staff has listened to concerns and shared these with Snyder prior to developing the design. While Snyder has worked hard to come up with ways to mitigate these concerns, some residents still disagree with the addition of lights and sound system on the field. Therefore, there are other alternatives suggested if the Council does not feel these two components should be included.

The overall response to the design was positive and well received at the public meeting. In addition, the Parks and Recreation Commission is recommending that the City Council approve Alternative #1. **Therefore, assuming the Council members agree**

that the design that was developed by Synder & Associates adequately addresses the lighting and sound concerns raised by the neighbors, it is the recommendation of the City Manager that the City Council support Alternative #1 and thereby approve the design for the All Inclusive Playground and Miracle League Field in Inis Grove Park as presented.



Ames Miracle League Field and All Inclusive Playground

Inis Grove Park Improvements





Meeting Agenda

- Introductions
- What is a Miracle League Field?
- What is an Inclusive Playground?
- “The Master Plan” Overview
 - Site Specific Criteria
 - The Overall Plan
 - The Field
 - The Play Area



Miracle League

Inis Grove Park Improvements





Miracle League Field Facts

- Started in 2000. The Miracle League helps communities build and organize local leagues that provide baseball programming for children with special needs.
- The organization also provides design standards and preferred vendors for the field and playgrounds based on testing and past experience.
- **The Field:** A customized 125' Center Line field with a specialized rubber surfacing for easy access with a mobility device and soft surface to help prevent injuries.
- **Other Uses:** The fields are often used for other community services such as adult kickball and exercise classes.



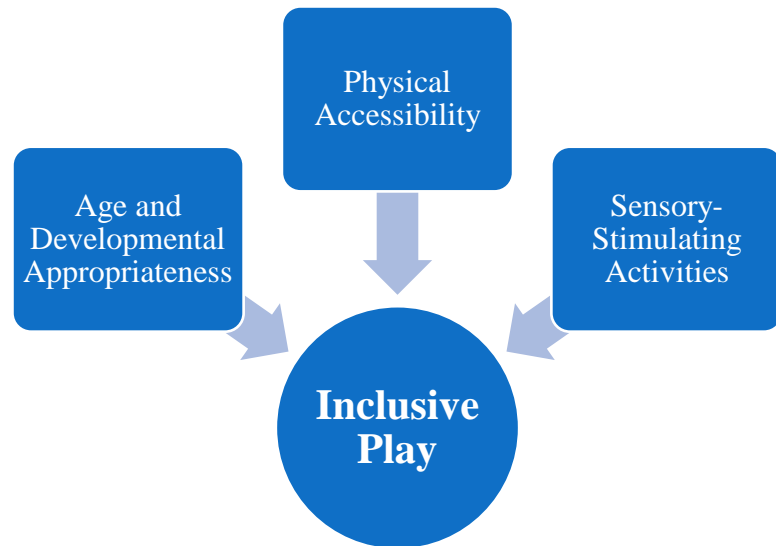
Inclusive Play

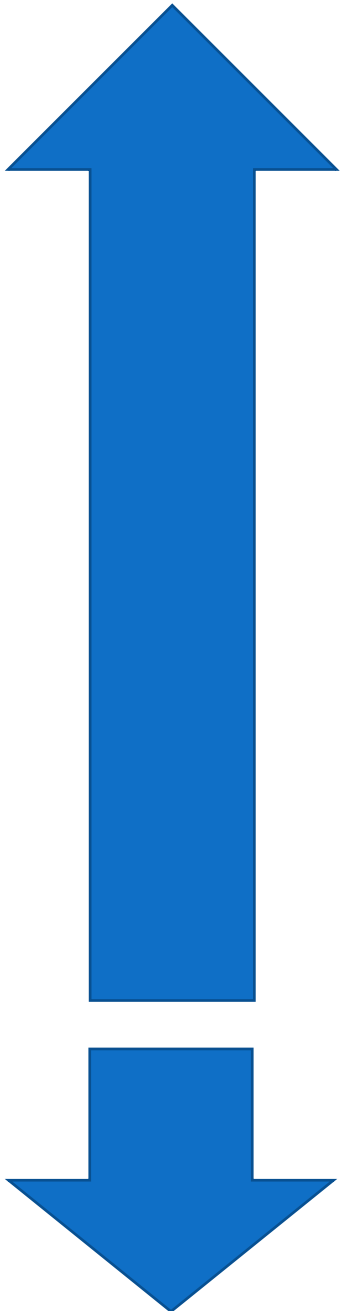
Inis Grove Park Improvements



Centered on the Belief – All Children Have the Right to Play

- Current ADA (American Disability Act) standards only require that playgrounds include wheelchair accessible elements.
- 1 in 7 children living in the United States has a disability
- There are various levels and types of disabilities. Approximately 1% of children with disabilities are covered by ADA standards. We need to design the playground to include all children, thus the reason for all inclusive play environments.





Inclusive Playgrounds:

- Goes beyond minimum accessibility standards and providing facilities for those with physical disabilities
- Playground offers many opportunities for all children to develop cognitive, sensory, physical and social skills.
- Designed to be welcoming, engaging and challenging for all children
- The place is welcoming to parents and caregivers whom themselves may have a disability
- Feature a variety of environments where children can engage at their own pace and sensory input level

Inclusive Playground Myth:

They are playgrounds with a lot of ramps and little challenge for others.

The Work of
Play:
Inclusive
Playgrounds
recognize the
importance of play in
a child's development
and understanding of
social equity.

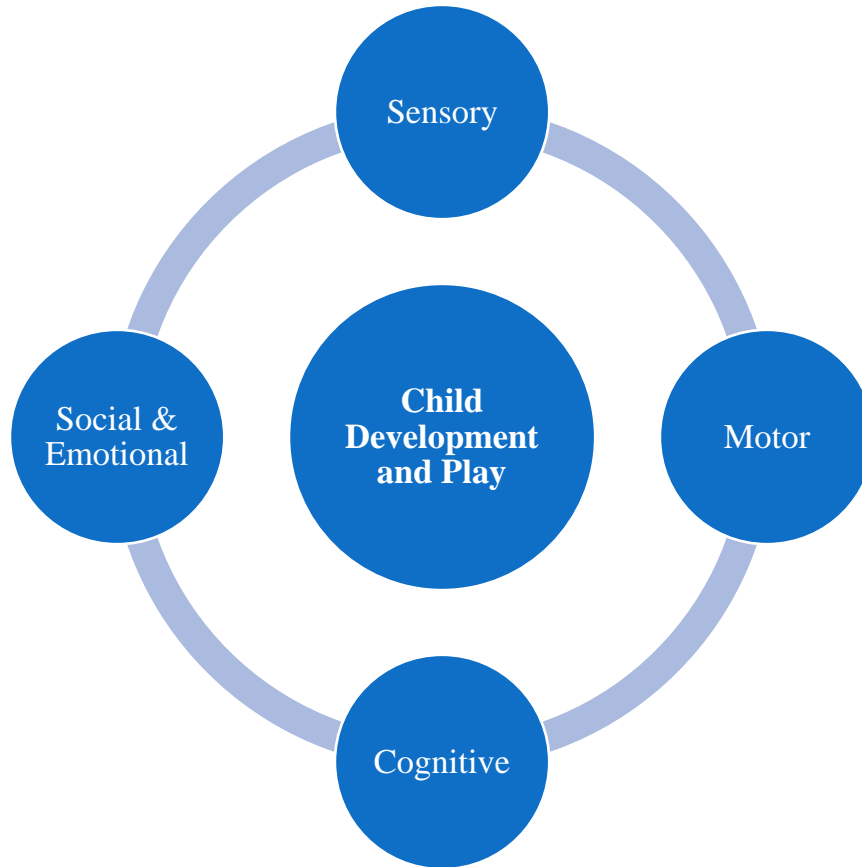
The Importance of Play:

All kids benefit from exploring four defined areas of developmental skills when at play.

It is important for inclusive playgrounds to provide a variety of developmental options for kids to choose from.

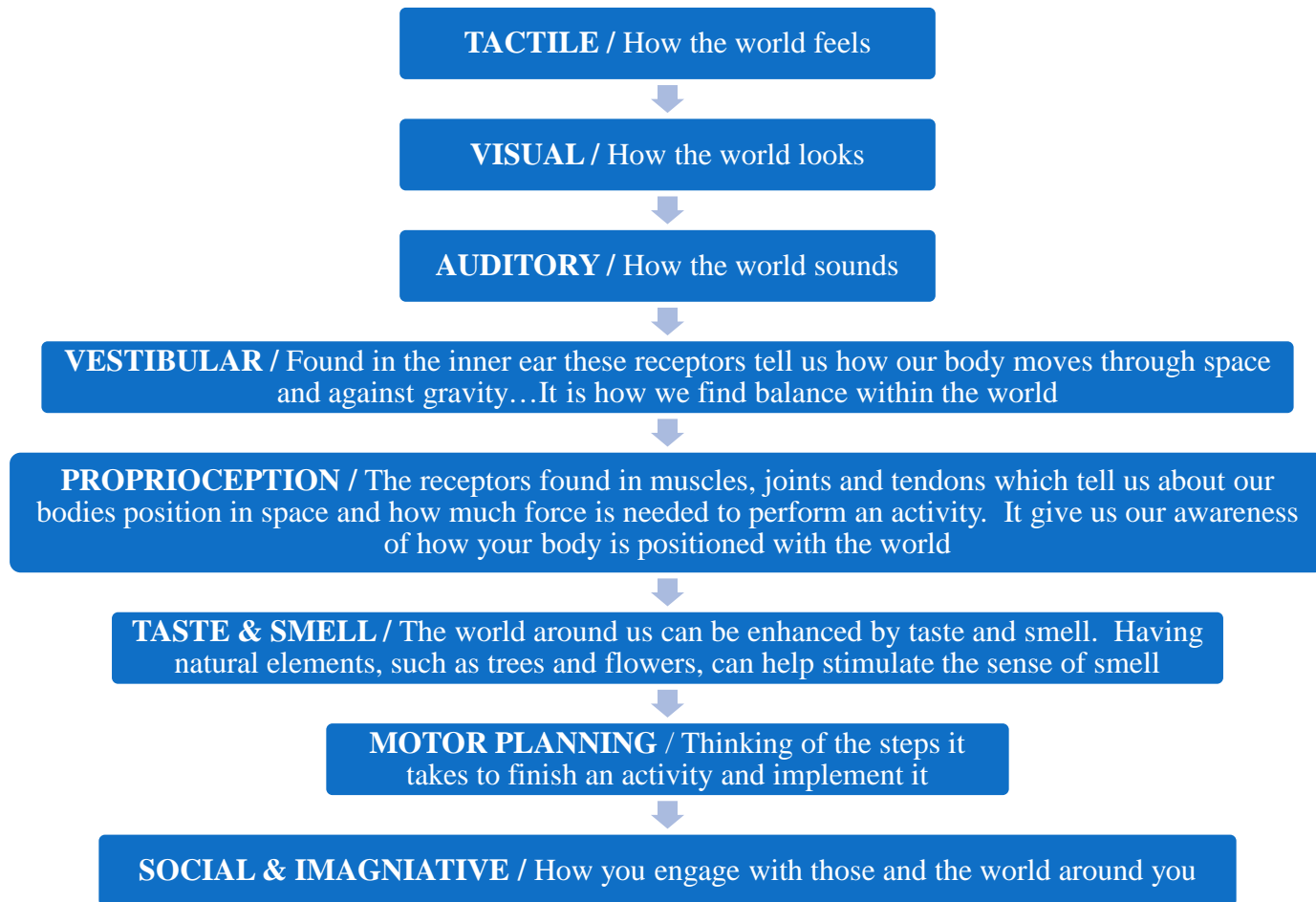
"The experience of experiencing something for the first time: I hate it, or I love it; I never want to do it again, or I want to do it again and again; can I replicate it if I like it, or can I do it differently next time—spin faster, slower, hold on tighter. This is why playgrounds need options for kids."

Ingrid Kanics, OTR/L
Kanics Inclusive Design Services, LLC



The Importance of **Sensory Play:**

Through the senses children discover their world and develop skills necessary to be successful in it. A play area that helps facilitate a variety of sensory experiences are more mutually engaging and encourage children of various ages and abilities to play together.





The Master Plan

Inis Grove Park Improvements

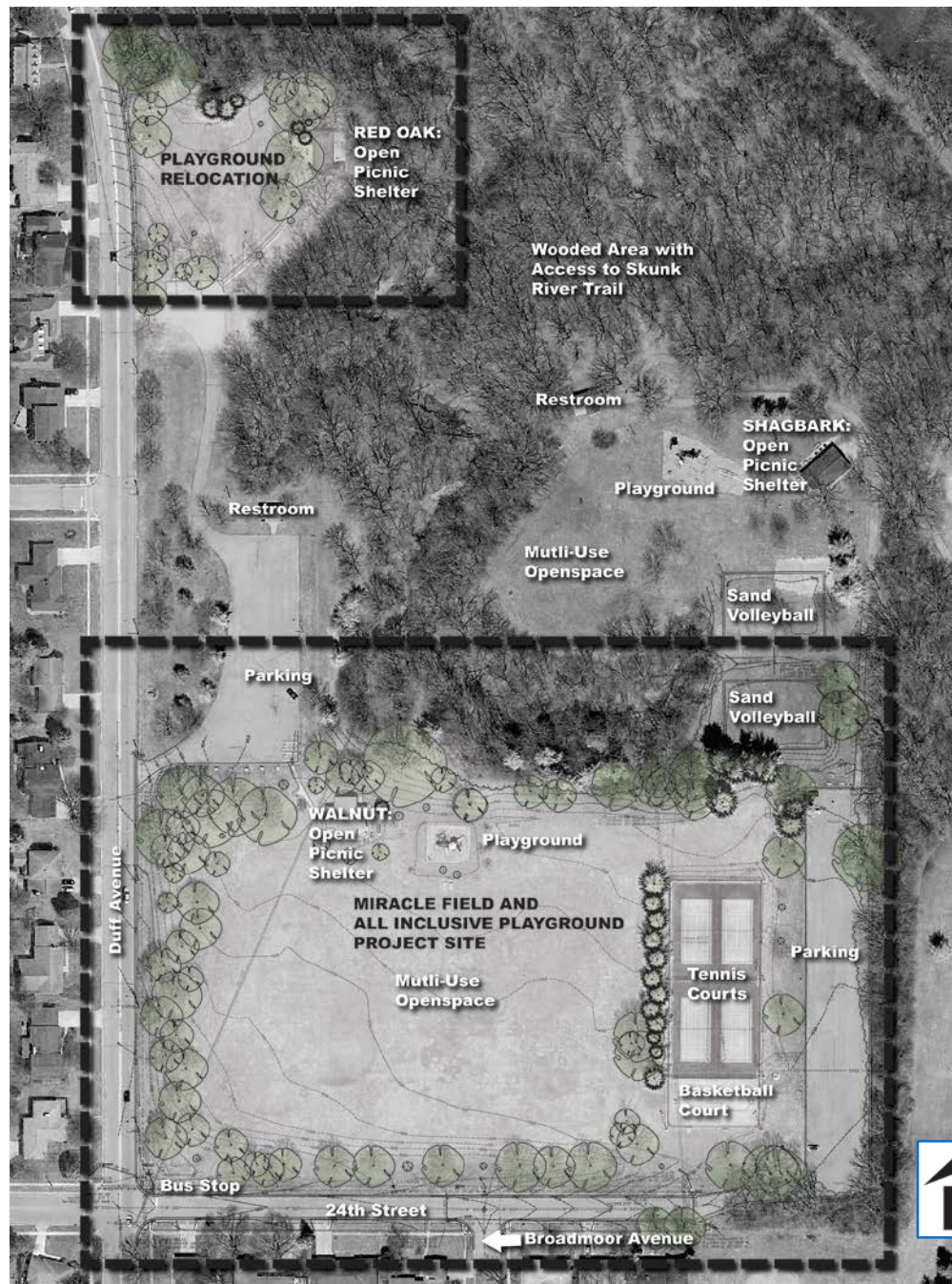




Inis Grove Park Site Specific Criteria

- Consideration of Existing Site Uses
- Consideration of Surroundings
- Impact/ Neighborhood Concerns

PROJECT LOCATION



- **Consideration of Existing Site Use:**
 - A community park with a diversity of existing recreation and natural features.
 - Picnic Shelters, Sand Volleyball, Basketball, Tennis, Playgrounds
 - Large Multi-Use Open Space (i.e. Soccer, Ultimate Frisbee, Baseball)
 - Natural wooded area with trails
- **Surroundings:**
 - WEST/SOUTH - Residential properties to the West and South
 - NORTH - Wooded area to the North with drainage way to South Skunk River
 - EAST - Homewood Golf Course

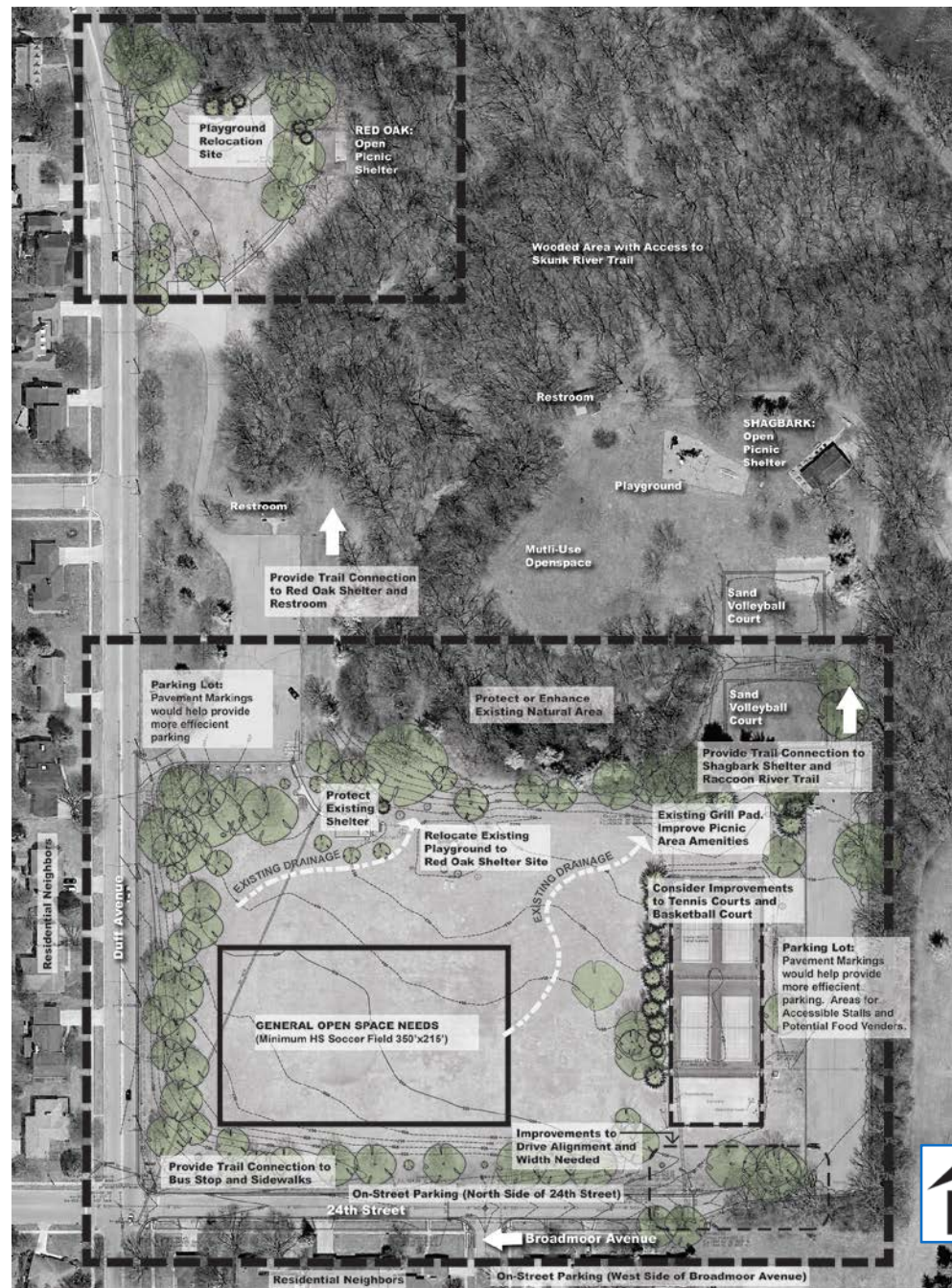
SITE ANALYSIS

• Other Needs to Consider:

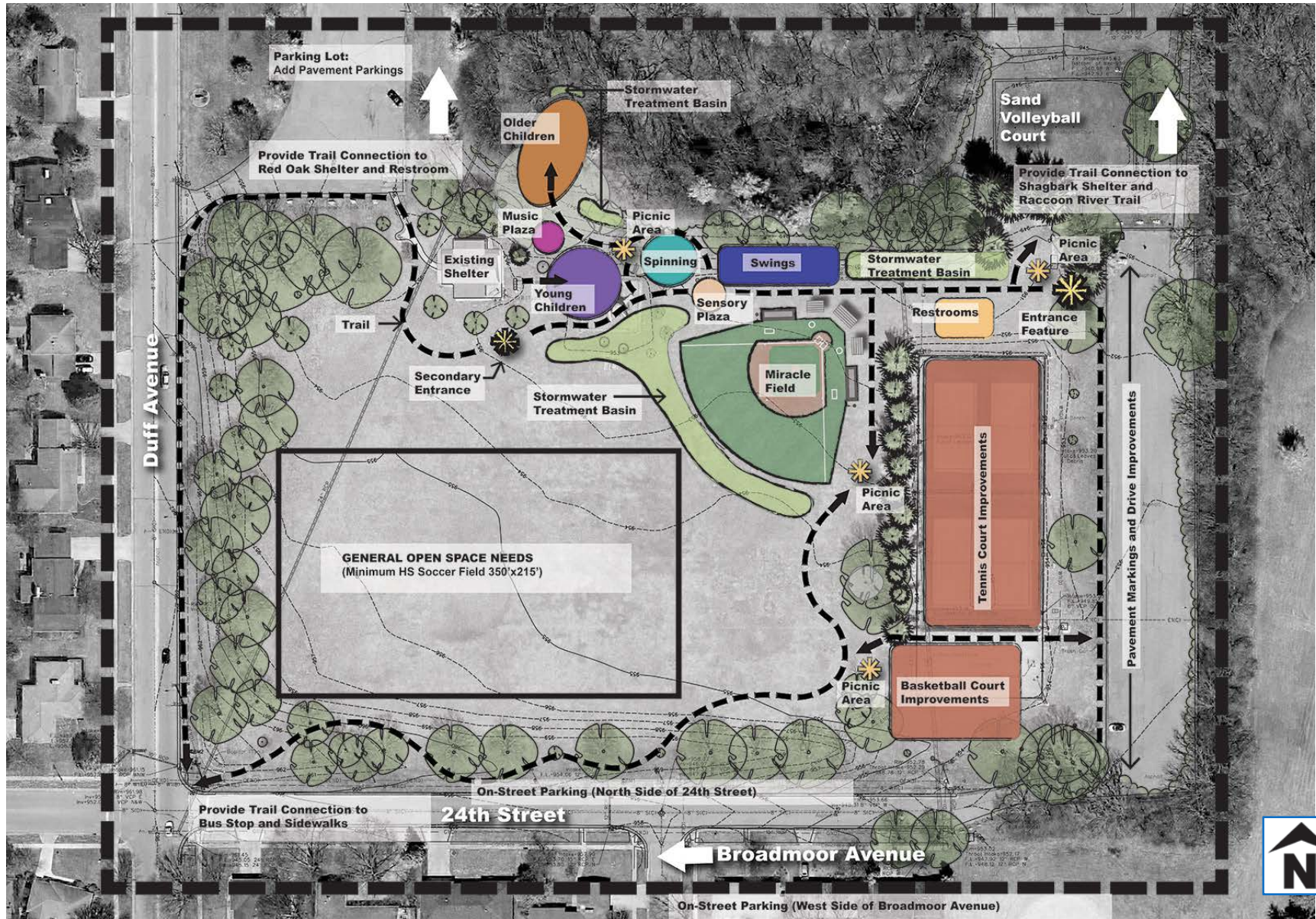
- Restroom Facility
- Drinking Fountains
- Access to Shade
- Removal of Hazard Trees
- Overall Site Connectivity and Accessibility
- Unique Natural Setting

• Impact Concerns:

- Traffic and Parking
- Stormwater
- Noise
- Visual Impacts
- Lighting
- Safety (i.e. Ravine)

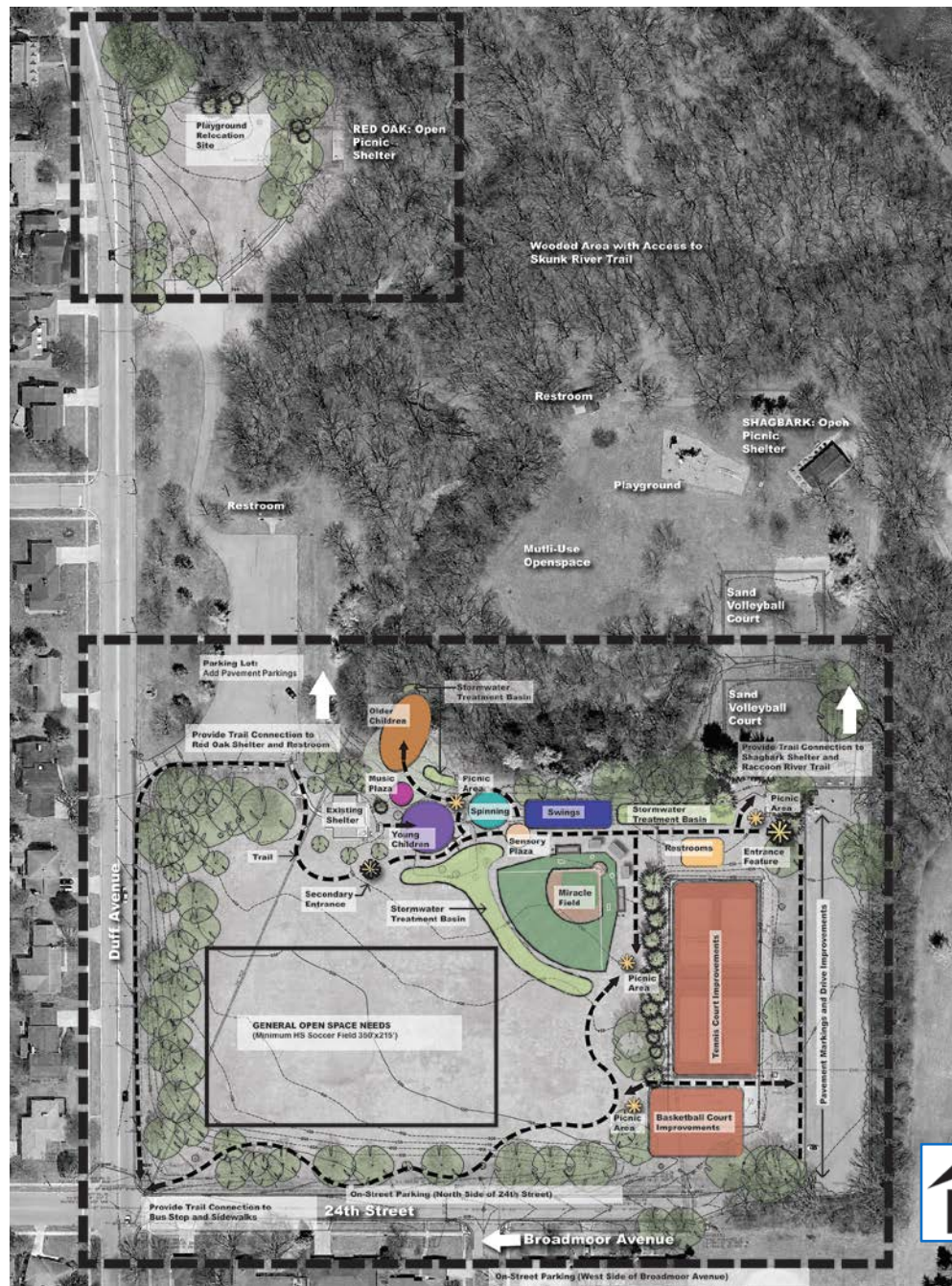


SITE LAYOUT



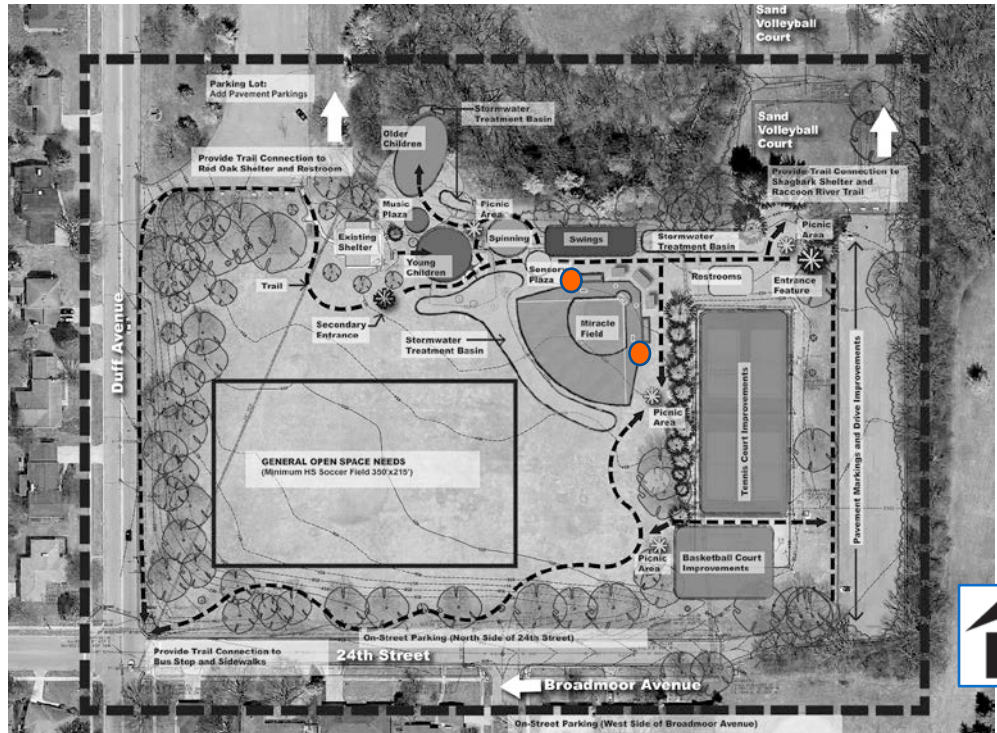
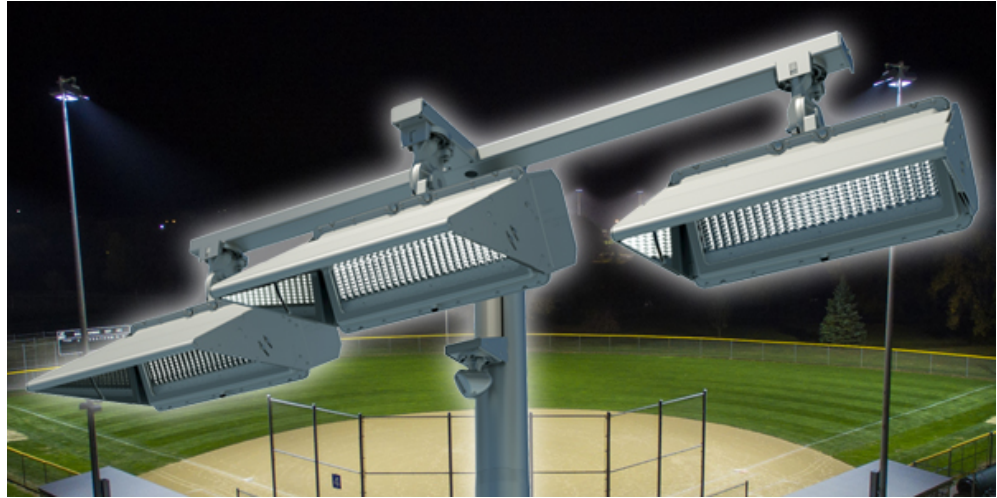
ADDRESSING CONCERNS

- **Stormwater**-will be captured and treated in a series of stormwater basins
- **Traffic and Parking**- will be addressed utilizing existing parking areas. No additional parking needs are anticipated. The site will need approximately 5 additional accessible stalls marked to accommodate the Miracle League activities.
- **Noise**- audio equipment is to have limited use on site, primarily for Miracle League games. The use of audio equipment will direct sound toward viewers and away from neighbor residents.
- **Visual**- The use of strategic tree plantings provides multiple benefits.
 - Extends the sense of natural wooded area into the play area
 - Provides a visual buffer to neighboring properties
 - Increases access to shade in key use areas
- **Safety**- Fence along ravine

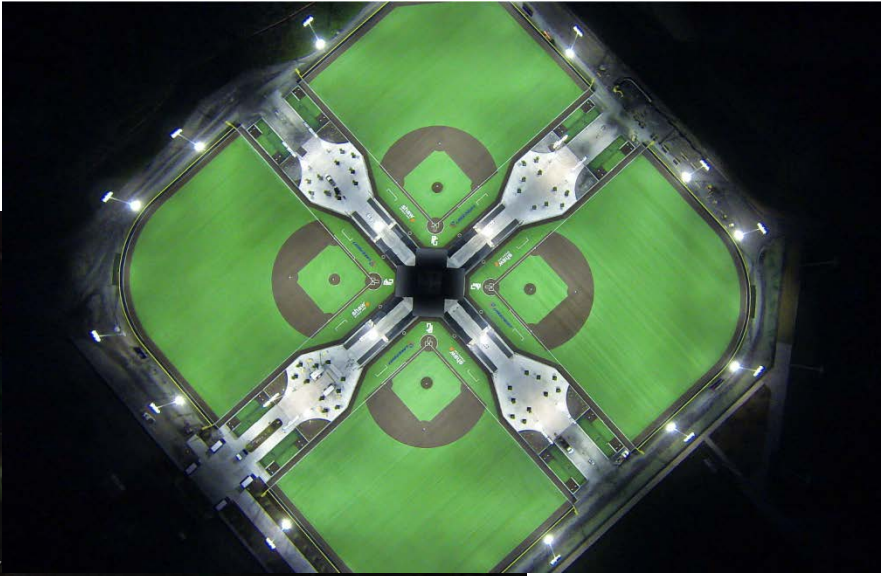


LIGHTING

- **Light Control-** a controlled lighting system is recommended that controls glare and provides a bright uniform light that is directed onto the field but protects light pollution in the sky and into the neighboring properties.
- **Light Location-** Light placement is based on the need to light the field evenly and so a ball in play is lit from all sides

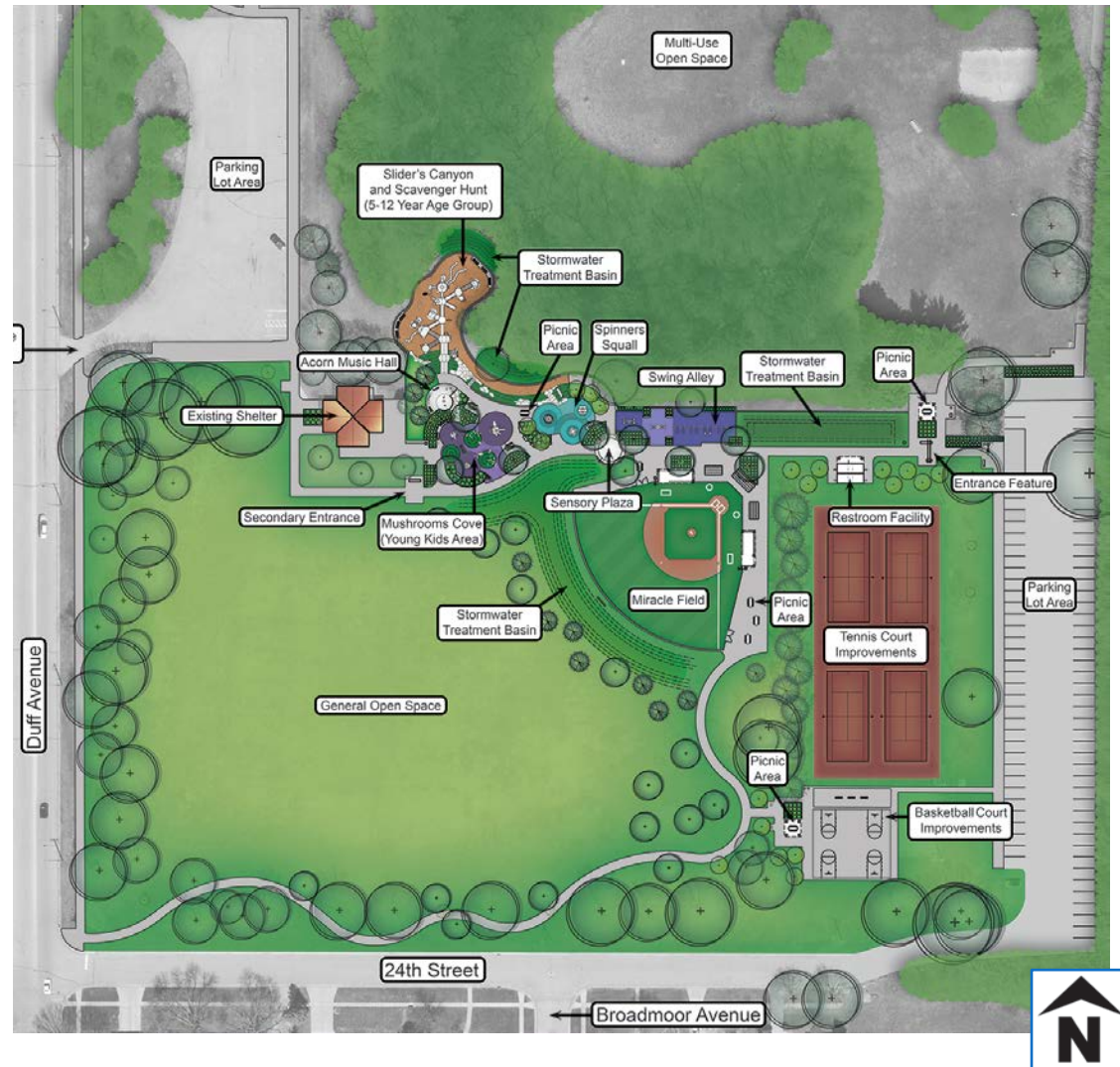


Lighting:

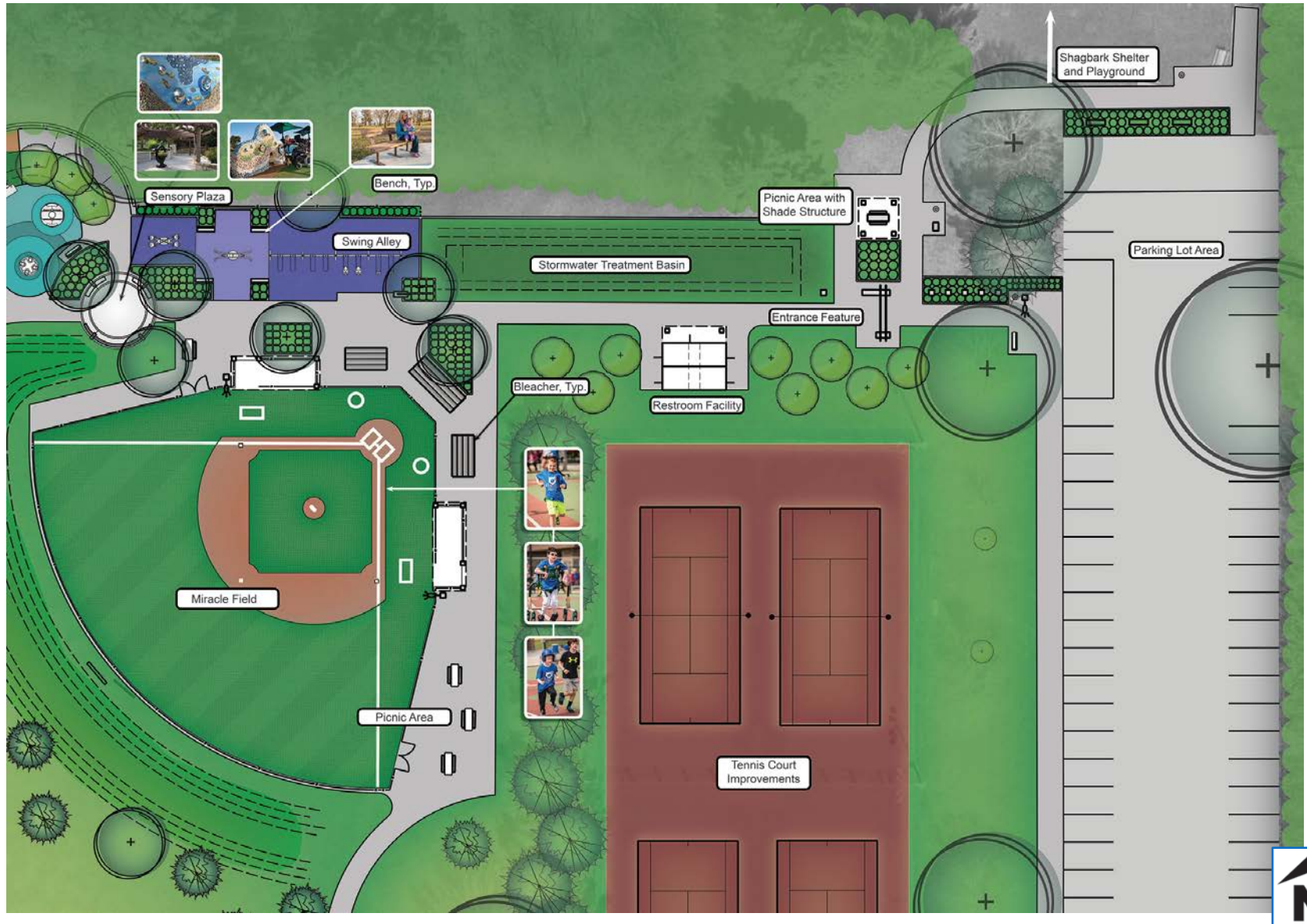


MASTER PLAN

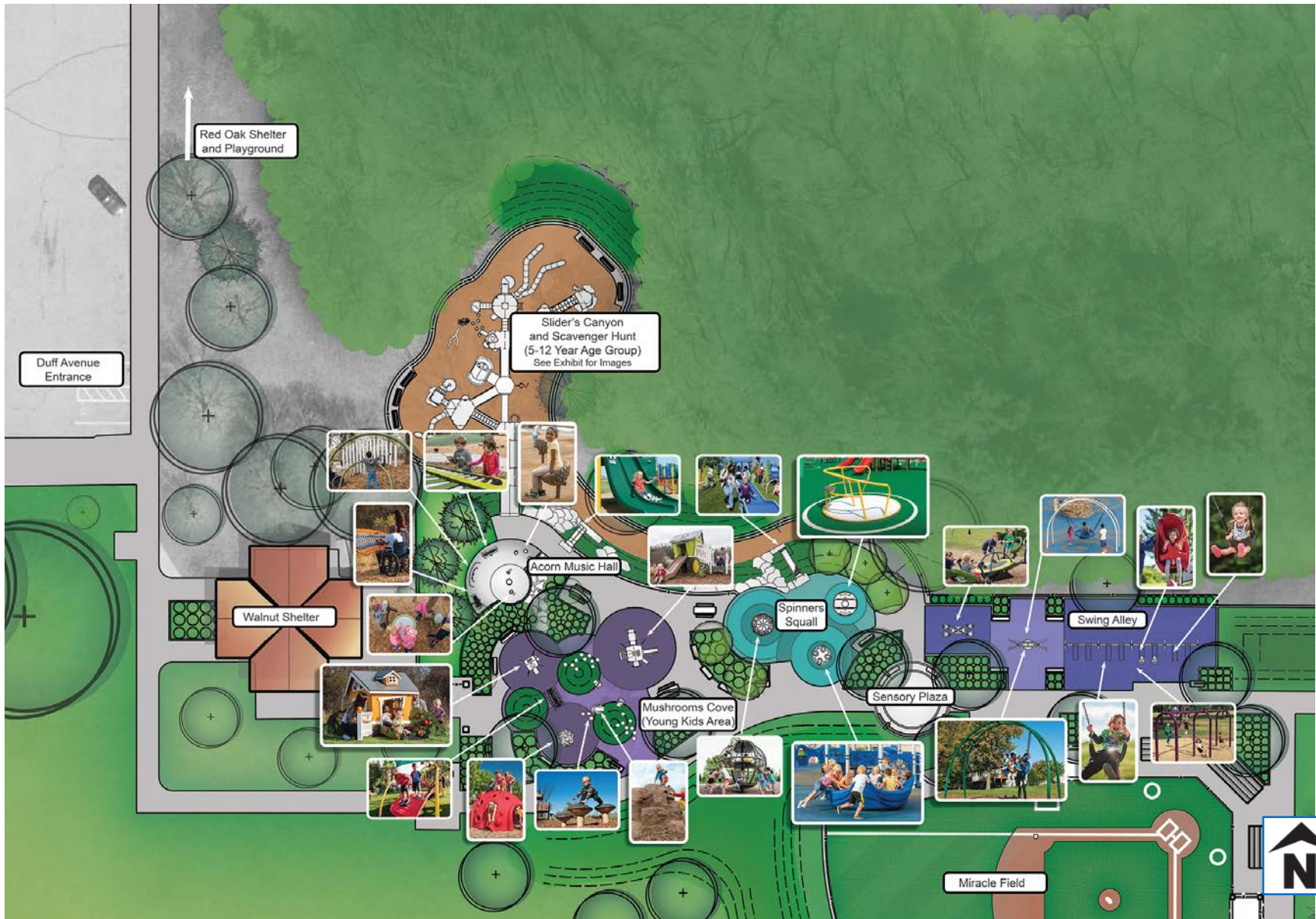
- Entrance Feature
- Parking Lot Entrance Drive Improvements
- Pavement Markings in Parking Lots
- Electrical Outlets for Food Vendors and Miracle Field
- Trail Connections
- Relocate Existing Playground to Red Oak Shelter
- Miracle Field
- All Inclusive Playground with Accessible Rubber Surface in a Nature Theme and Natural Color Scheme
- Sensory Plaza
- Restroom (4 – Accessible & Gender Neutral)
- Basketball Courts (4-Hoops, Smaller Courts)
- Tennis Court Improvements (Surface & Fence)
- Open Picnic Areas and Seating Areas
- Small Shelters with Picnic Table
- Planting Beds and Trees



MASTER PLAN – MIRACLE FIELD



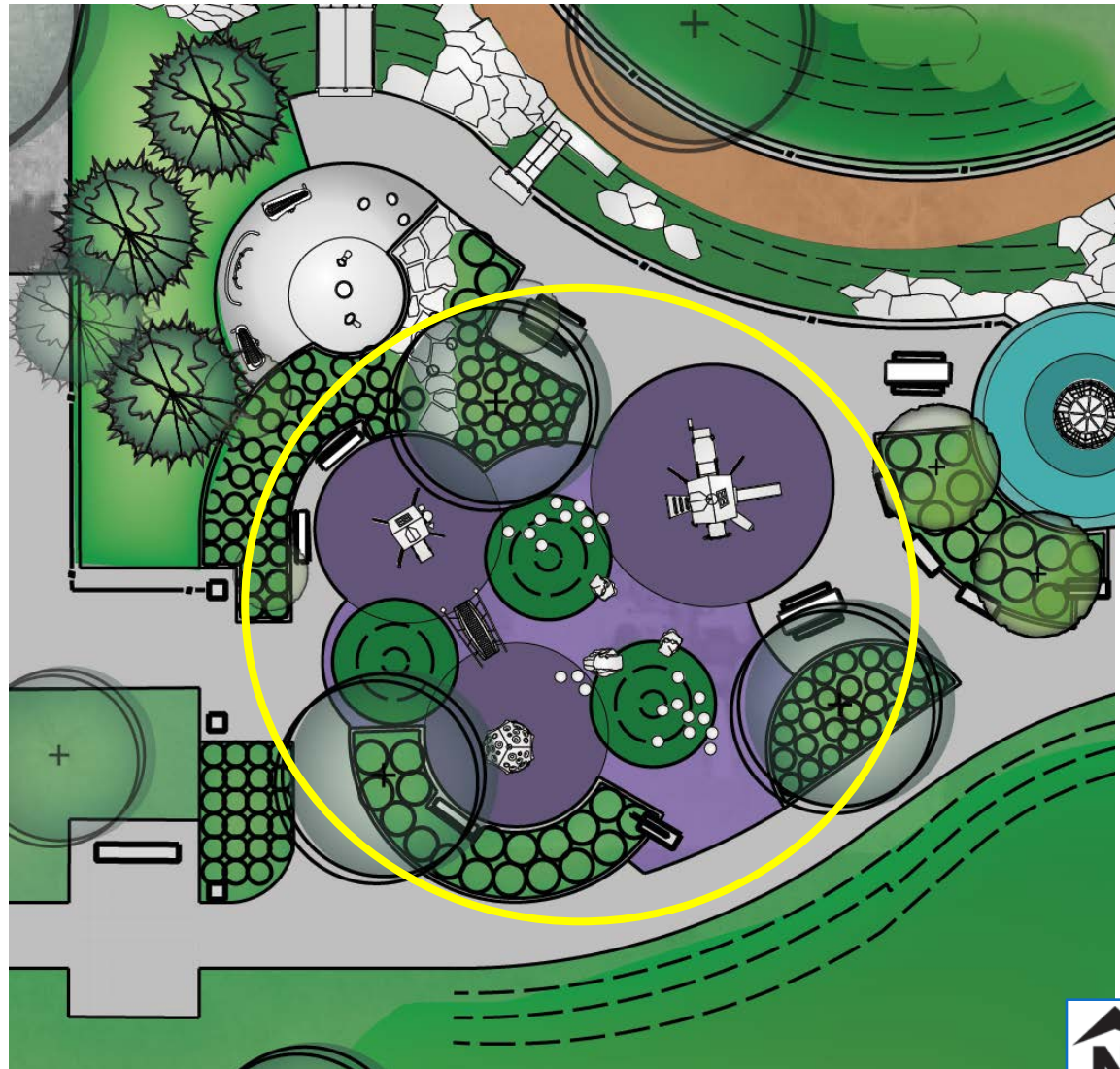
MASTER PLAN – OVERALL PLAYGROUND



MASTER PLAN – YOUNG CHILDREN

MUSHROOM COVE

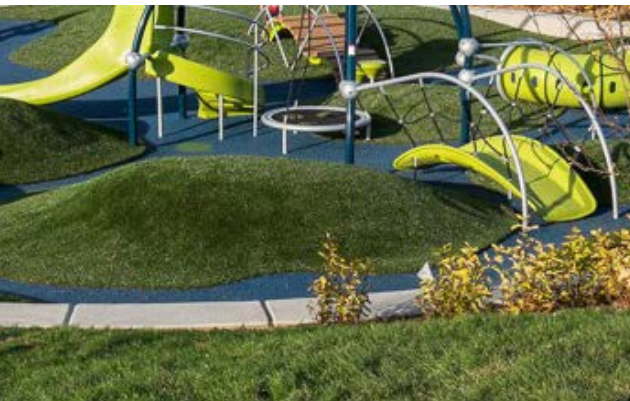
- Age and developmentally appropriate equipment
- Quiet spaces
- Sensory elements
- Various levels of challenge
- Seating areas (Benches with back support, accessible picnic tables)



MASTER PLAN – YOUNG CHILDREN

MUSHROOM COVE

- Area for children from 6 – 23 months
- Area for children from 2-5 years old
- Short grass like safety surface placed on mounds for a soft and safe and surface to climb up and roll down



MASTER PLAN – YOUNG CHILDREN

MUSHROOM COVE

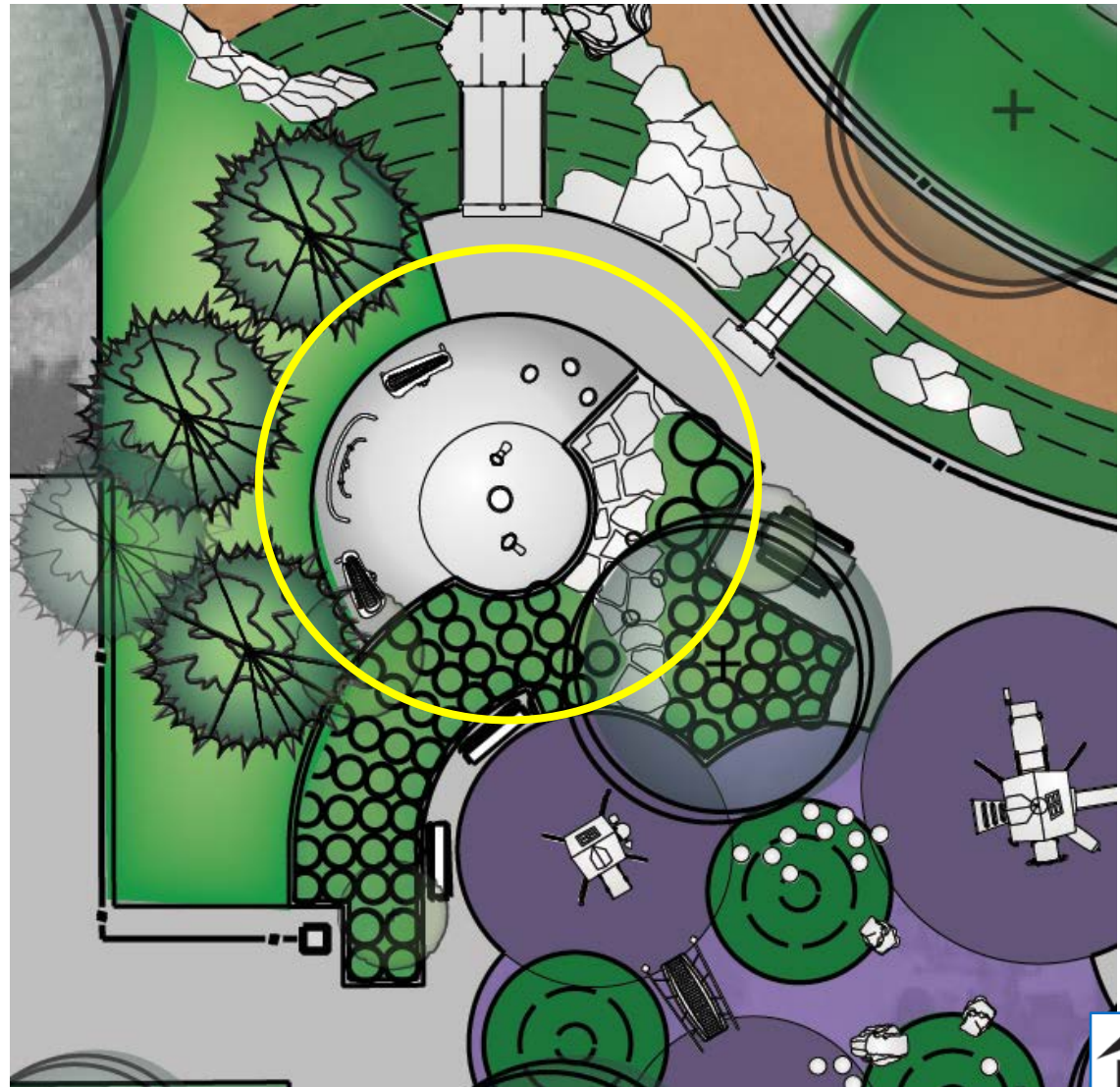
- Small rock climbing features
- Mushroom steppers
- Cozy dome
- Boppity bridge



MASTER PLAN – AUDITORY SENSES

ACORN MUSIC HALL

- Outdoor musical instruments that encourage multigenerational play and creativity with high quality sound
- Acorn shaped seats provide a unique resting spot both near the equipment and nestled amongst the plantings along a limestone path for those who may want a more distant observation
- Evergreens can be planted between the shelter and music area to help buffer the sound



MASTER PLAN – AUDITORY SENSES

ACORN MUSIC HALL



MASTER PLAN – SPINNING

SPINNERS SQUALL

- Spinning is considered a core movement that engages the vestibular receptors
- It helps children develop valuable equilibrium information
- Global Motion
- Omni Spin
- Wheelchair Accessible Merry-go-round
- Roller Slide on hillside with custom transfer platforms at the top and bottom of the slide
- Various levels of challenge
- Seating areas (Benches with back support, accessible picnic tables)



MASTER PLAN – SPINNING

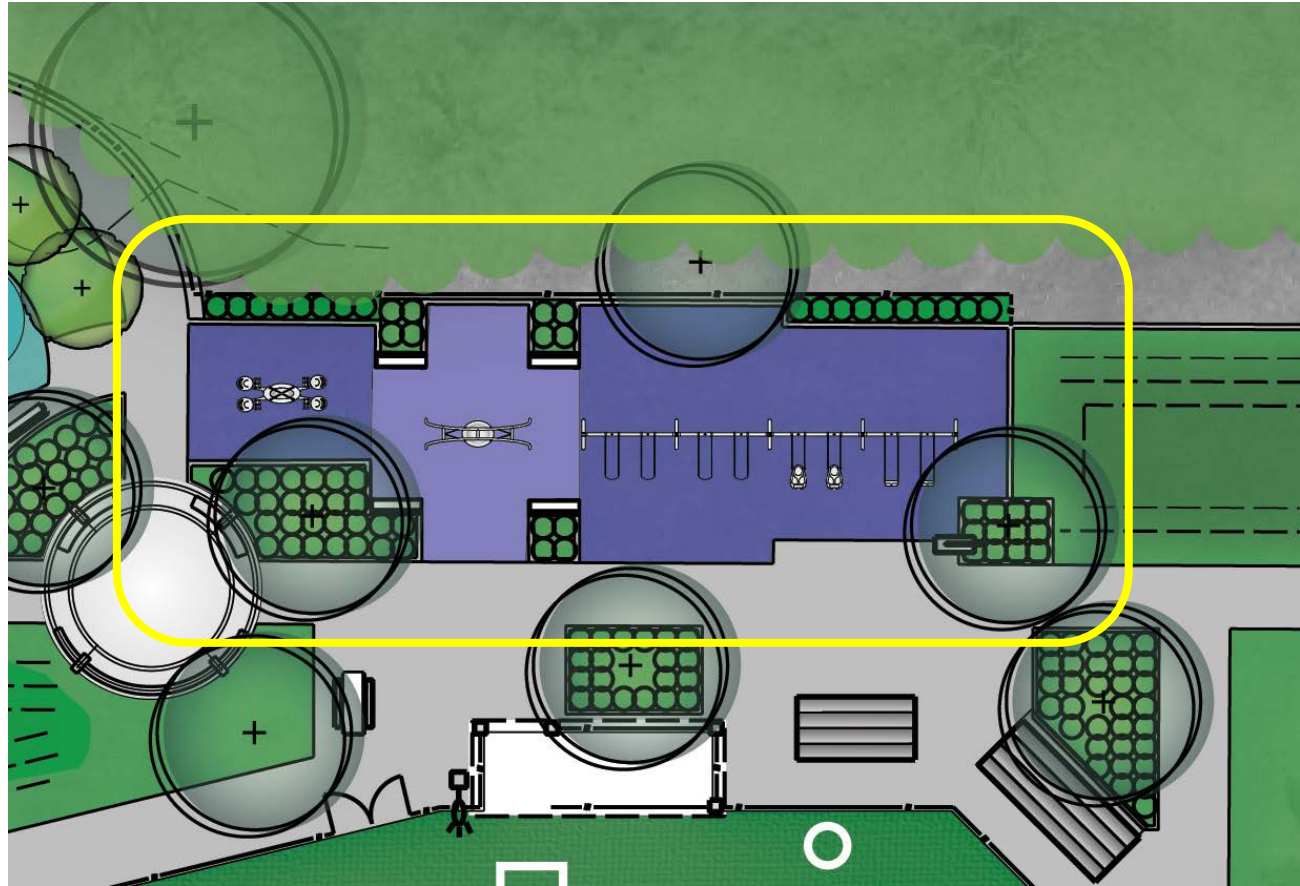
**SPINNERS
SQUALL**



MASTER PLAN – SWINGING

SWING ALLEY

- The back and forth motion of the swing helps children develop their nervous system and motor planning using visual, vestibular and proprioceptive information.
- Belt Swings (5-12 year olds)
- Toddler Bucket Seats
- Accessible Molded Bucket Seats with Back Support
- Transfer Accessible Multi-User Oodle Swing
- Transfer Accessible Wee-Saw Multi-User with Back Support
- Seating areas (Benches with back support)



MASTER PLAN – SWINGING

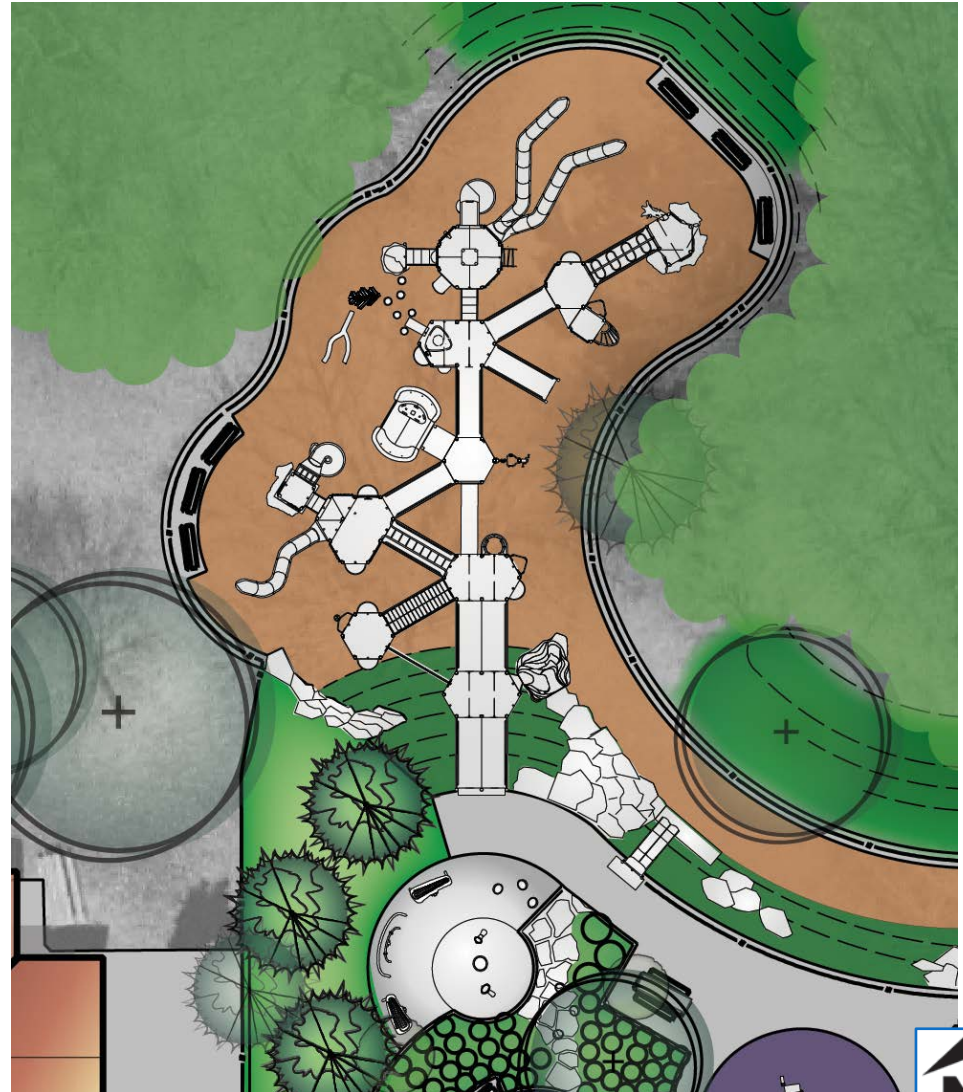
SWING ALLEY



MASTER PLAN – 5-12 Year Old Children

SLIDER'S CANYON

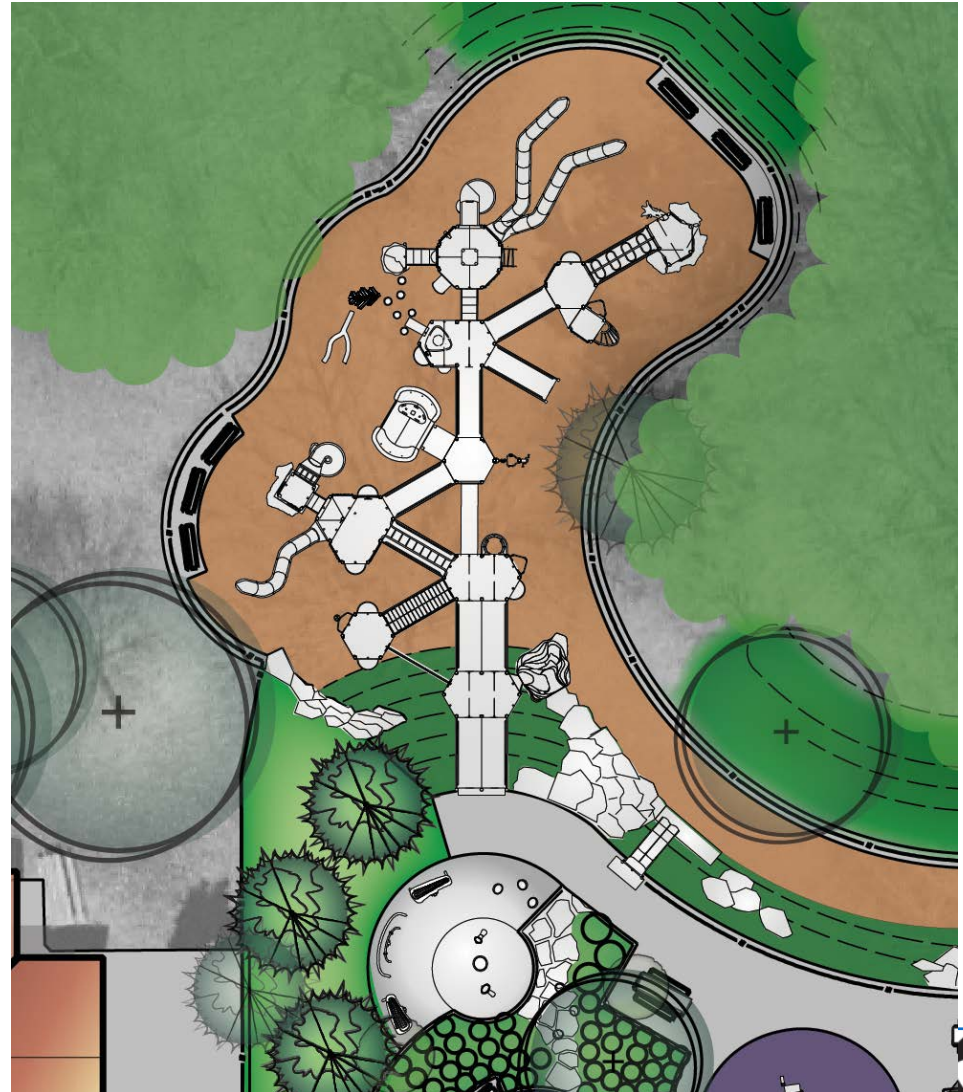
- Slides and Climbing require tactile, proprioception, vestibular and visual senses.
- Children love to climb and conquer. It helps create “Sensory-motor intelligence” and “visual spatial perception”. They help develop focus and motor planning skills.
- Sliding is a sensory rich experience. Children use their visual and vestibular systems to understand speed and pressure needed to slow down. They develop balance and motor planning skills.



MASTER PLAN – 5-12 Year Old Children

SLIDER'S CANYON

- Various Levels of Challenge
- Double Wide Ramp Access
- Unique Nature Themed Features
- Other Features Include:
 - Seating Areas
 - Balance Events
 - Upper Body Events
 - Tube Crawl
 - Wheelchair Accessible Clatter Bridge
 - Wheelchair Accessible SwayFun Glider
 - Quiet Spaces
 - Gathering Spaces
 - Scavenger Hunt
 - Sensory Panels



MASTER PLAN – 5-12 Year Old Children

BRIDGES, RAMPS AND MORE



MASTER PLAN – 5-12 Year Old Children

CLIMBERS



MASTER PLAN – 5-12 Year Old Children

THE CANYON



MASTER PLAN – 5-12 Year Old Children

SLIDES



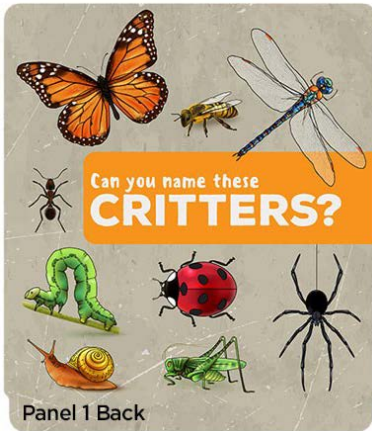
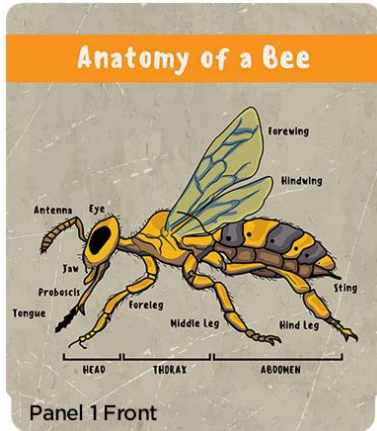
MASTER PLAN – 5-12 Year Old Children

Curiosity

SENSORY PANELS



Texture



Sound

Motor Skills



Visual



Access

MASTER PLAN – 5-12 Year Old Children

OTHER FEATURES



Balance



Transfer Platform



Accessible Glider



Nature Theme Look and Feel



Upper Body

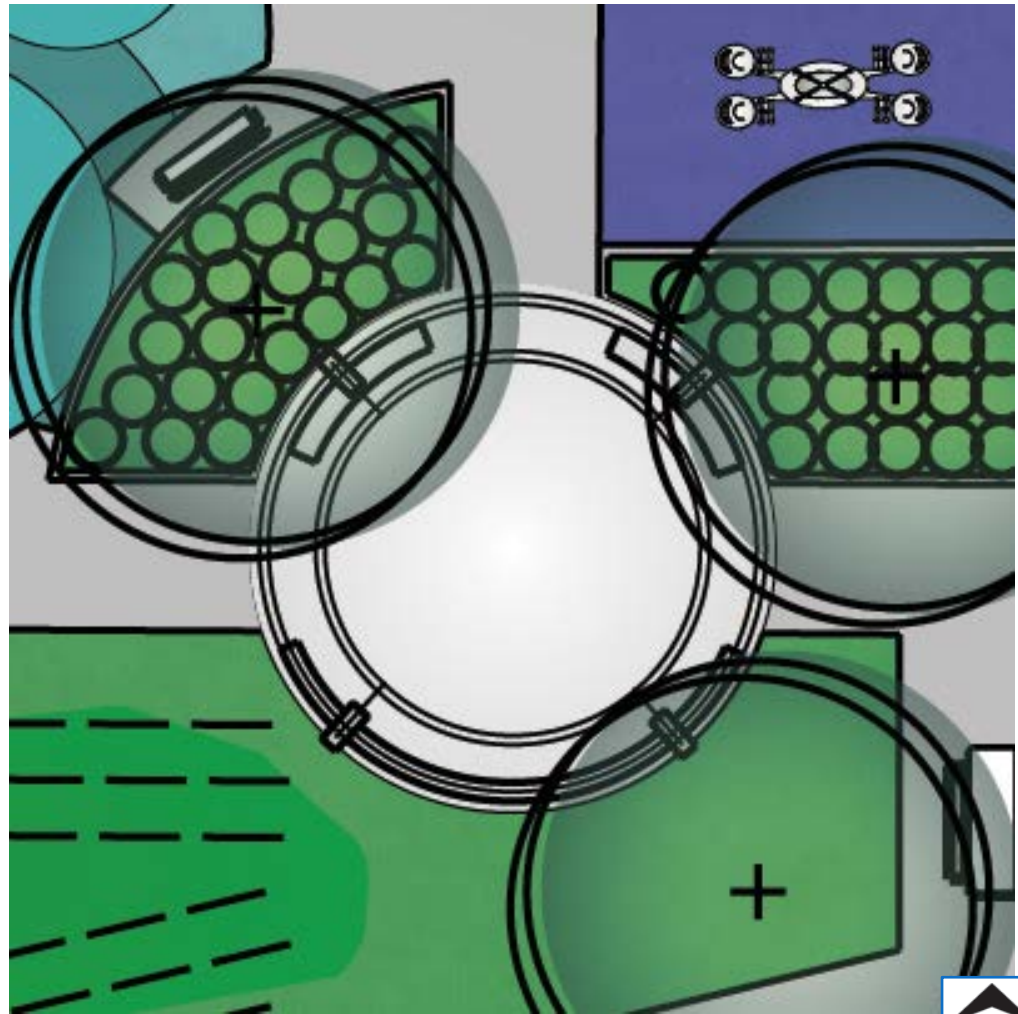


Gathering Spot

MASTER PLAN – SENSORY PLAZA

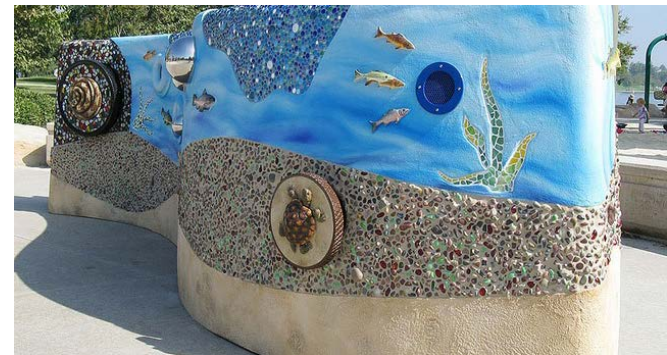
SENSORY PLAZA

- Unique Custom Sensory Wall
- Potential for Local Artist Involvement
- Potential for Donor Recognition
- Vertical Shade Structure
- Limestone Seat Walls



MASTER PLAN – SENSORY PLAZA

SENSORY PLAZA





THANK YOU

Please fill out a comment sheet!



ATTACHMENT B

Public Meeting Comments

Meeting held May 11, 2017

Public Comments:

- A. Includes comments submitted on designated comment form during meeting on May 11th.
- B. If no comments were provided on a particular form section it is omitted here.
- C. Comments are shown in *Italic*.

Comment Form 1:

- Favorite Feature(s) and Why:
Nature colors.
- Other Features to Consider and Why:
Security of park – lots of traffic in off hours. If the field goes, plant the trees.
- Features Not to Include and Why:
AV system. It's a want not a need. The field and program can go forth without sound. Little league has no PA system.
- Additional Comments:
*I don't believe for a minute that all of this will fit into where you are planning. We've spent many hours measuring and taking photos – THERE IS NO WAY!
Will programming be staggered so volleyball and planned field use not overlap.*

Comment Form 2:

- Features Not to Include and Why:
Please reconsider the lights – we have enough light pollution with the vb events. It is also counter to how this field was pitched in earlier presentations (e.g. just Saturday use of field for games)
- Additional Comments:
*Please include all tree plantings along Duff and 24th Street. Master plan, as shown tonight is very misleading as to ?? plantings.
Double check your scale – I've done a lot of measurements of this area and don't see how all this "stuff" will fit as shown.*

Comment Form 3:

- Favorite Feature(s) and Why:
The playground. Because handicapped people, young and old deserve a safe play area.
- Other Features to Consider and Why:
Please minimize lights and sound. Glad they will go off at night. Good to auto lock restrooms.
- Features Not to Include and Why:
More than 1 ball diamond.
- Additional Comments:
Hope you have lots of sugar daddy's!

Comment Form 4:

- Favorite Feature(s) and Why:
Spinners cove because it's a fair thing to do and experience and share with all abilities.

CITY OF AMES MIRACLE FIELD & ALL INCLUSIVE PLAYGROUND

- Other Features to Consider and Why:
Zip line possible in the future.
- Features Not to Include and Why:
Bounce pads.
- Additional Comments:
Very nice – we can't wait, we live in the neighborhood and will utilize this park more when finished. We have a child with special needs and she loves to socialize and have fun – this will add to her life and enjoyment.

Comment Form 5:

- Favorite Feature(s) and Why:
I really enjoy the whole park. It's an area that I can enjoy with my friends and fell safe at.
- Additional Comments:
Having a food area there would be great.

Comment Form 6:

- Favorite Feature(s) and Why:
Sensory space, spinner space, quiet spaces, slider's canyon, gender neutral bathrooms.
- Other Features to Consider and Why:
*Weight rated equipment for adults.
Protection from water attraction (austic children)*
- Additional Comments:
*Great plan and love bringing it to Ames!
Barilla would like to donate sponsor.*

Please Print

Name: <u>Kim Martinez</u>	<u>quintou</u> Barilla (work)
Address: <u>1324 Scott Circle (Home)</u>	<u>3311 East Lincoln Way</u>
Phone: <u>515-230-6744 (personal cell)</u>	<u>515-357-4633</u> (work cell)
Email: <u>KKMartinez@hotmail.</u> (personal email)	<u>Kim.martinez@barilla.com</u> (work email)

Comment Form 7:

- Favorite Feature(s) and Why:
Nature theme enclosed in more shaded areas. Love the limestone feature.
- Other Features to Consider and Why:
Please have adult sized tables for changing tables in restrooms.
- Additional Comments:
Feel lights are important for field.

Comment Form 8:

- Other Features to Consider and Why:

CITY OF AMES MIRACLE FIELD & ALL INCLUSIVE PLAYGROUND

Tall fencing of the entire playground would be a must for families like mine. I have two children with autism who tend to run or wander. We cannot attend any park that isn't fully fenced. Currently fellows and northwood are our only options.

Comment Form 9:

- Favorite Feature(s) and Why:
Molded bucket swing. Swing alley. Picnic area with shade structure. Accessible merry go round. All elements we would use with our daughter who is wheelchair bound.
- Other Features to Consider and Why:
Possible diapering station within accessible bathroom.
- Additional Comments:
Accessible glider – looks awesome! 'Sway fun'

Comment Form 10:

- Favorite Feature(s) and Why:
Overall I think the planning has been done well. Please include the neighbors in the site colors and features.
- Other Features to Consider and Why:
Tone down the bright colors that exist in other Miracle League Park, earth tones, please.
- Features Not to Include and Why:
I am still very concerned about the lights and what does to the neighborhood. Every night we see lights on at the basketball court and lighting all night on the sand volleyball.
- Additional Comments:
As lights occur it will become a recreation center as opposed to a park. The area is not built for that much use. The other concern is protecting the trees in the ravine.

Comment Form 11:

- Favorite Feature(s) and Why:
*Spring/fall league for children w/ disabilities.
Area for smaller children.
Transfer boards at slides.*
- Other Features to Consider and Why:
Would want belts on see-saw. Restroom changing table for older children/teens that use wheelchairs for mobility. Paved trails for wheelchair access. Lower bball hoop for kids in wheelchairs.
- Additional Comments:
*Please ensure restroom has space for changing teens that use wheelchairs. Adult size changing area for those that can't bear own weight.
Keith – if looking for changing table design or options contact us and come and look!
Love to be part of steering committee. Rachelle Flory-ChildServe*

Comment Form 12:

- Favorite Feature(s) and Why:
I think making the playground more accessible for those in wheelchairs. I also like how you making it educational. The scavenger hunt I think would be a good idea.
- Other Features to Consider and Why:
The amount of trees disappearing is kinda scary. The tree paths trail are one of my favorite things there. Might want to keep more trees.
- Features Not to Include and Why:

CITY OF AMES MIRACLE FIELD & ALL INCLUSIVE PLAYGROUND

I don't have any.

- Additional Comments:
Like the set up for the park. Would like more trees to stay but I think this playground is a great idea. I think it will draw a lot of people to the park.

Comment Form 13:

- Favorite Feature(s) and Why:
Great idea!
How about sand play areas? With hose available?
- Other Features to Consider and Why:
Motorized changing tables for adults. Recently I heard a presentation on NPR about motorized changing tables for adults (and adult-size children). Why: should be obvious.
- ~~Features Not to Include and Why:~~
Will there be opportunities to teach parents and caregivers safe, fun, and beneficial ways to use the equipment.
- Additional Comments:
 1. *I assume the parking will be reasonably close to the activity area.*
 2. *Seating for adults near each area.*
 3. *Shade*
 4. *Attention to needs of hearing impaired and visually impaired.*

Comment Form 14:

- Favorite Feature(s) and Why:
Arm swings, it attracts a lot of children and they find it fun. The sensory feature is beautiful. The theme of the playground neutral colors. Pathway to sidewalks.
- Other Features to Consider and Why:
Benches and more picnic areas. More artistic view.
- Features Not to Include and Why:
Maybe not sound for the playground or decrease the noise substantially.
- Additional Comments:
Great placement and beautiful design.

Comment Form 15:

- Favorite Feature(s) and Why:
6-23 month – unique! I've never seen this before! Music. Omni spin-higher backs and safer than merry-go-round. Global motion – challenge for kids that can handle it. We saw siblings can swing together! Omni swing!
- ~~Other Features to Consider~~ More Favorites and Why:
Natural look such as rock climbing and canyon – love the discovery aspect. Transfer device platform for mobility assistance. Sway fun! – like an amusement park!
- Features Not to Include and Why:
I can't think of a negative feature or comment. I am thoroughly impressed. Great job!
- Additional Comments:
I love the idea of the four-way stop on Duff Ave. and 24th St. I really enjoy the diversity of the playground equipment. I feel children and adults of all abilities will love this playground! I feel the sound system and lights will be targeted well to the field only. I believe the neighbors will mostly only hear cheers from fans. I love the idea of rain gardens to assist the watershed.

CITY OF AMES MIRACLE FIELD & ALL INCLUSIVE PLAYGROUND

Comment Form 16:

- Favorite Feature(s) and Why:
The miracle field assembly, handicapped restrooms.
- Other Features to Consider and Why:
none
- Features Not to Include and Why:
none
- Additional Comments:
A handicap swing.

Comment Form 17:

- Favorite Feature(s) and Why:
Lighting used for field produces no glare for neighbors and gives a good lighting.
- Other Features to Consider and Why:
Have a echoing system (walls) that minimizes the noise of the instruments. Bright colors for the playgrounds to make the playground more attractive and fun to play with. Add belts onto sesaw, glider and big swing for safety. Minimize the sound of the instruments and have walls that the sounds can echo back the instruments.

Comment Form 18:

- Favorite Feature(s) and Why:
*Separate areas for difference areas.
Gender neutral restrooms.*
- Other Features to Consider and Why:
Sidewalk access to open green space.
- Features Not to Include and Why:
Fence around entire area. I feel that it would create an isolated feel.
- Additional Comments:
Keep up the hard and good work.

Comment Form 19:

- Additional Comments:
I think this is a good proposal for individuals with disabilities.

Comment Form 20:

- Favorite Feature(s) and Why:
I love all the ideas because this park will help all people with disabilities.
- Other Features to Consider and Why:
I think the speakers need to be put in because it will help people that can't hear.
- Additional Comments:
I love the slides, swings, spinning

CITY OF AMES MIRACLE FIELD & ALL INCLUSIVE PLAYGROUND

Comment Form 21:

- Favorite Feature(s) and Why:
I really appreciate how you have addressed the concerns of neighbors. You have done a good job of developing a community park!
- Additional Comments:
I love the design. I like them all! Including natural features and natural colors are great.

Comment Form 22:

- Favorite Feature(s) and Why:
I love the use of the ravine to add depth. This is really cool! Roller slides.
- Other Features to Consider and Why:
Be sure to have appropriate sound reinforcement. It is important to generate enthusiasm in the miracle league population.
- Features Not to Include and Why:
I like it all!! Good job!!!
- Additional Comments:
*I like the fact that there are some climbing, spinning, teeter totter and other features that have been removed from parks in the name of safety. We need these features to encourage physical growth. It is okay to have some risk in this world.
Don't worry too much about noise. They just legalized fireworks in Iowa.*

Comment Form 23:

- Favorite Feature(s) and Why:
Keeping the open area on SW side. We like that non-challenged people will be able to use the play area.
- Other Features to Consider and Why:
Access bridge from west parking lot to NE part of park – to avoid congestion of Miracle Field area.
- Features Not to Include and Why:
We do not want lights and loud speakers. They will have a negative impact on neighbors – both human and animal.

Comment Form 24:

- Favorite Feature(s) and Why:
Having softball baseball fields.
- Other Features to Consider and Why:
Service animal accessible.
- Additional Comments:
People with service dogs would they be able to use the playground.

Comment Form 25:

- Favorite Feature(s) and Why:
Retention of open space. Very few places left to fly kites. Better design than I expected.
- Other Features to Consider and Why:
*Lacking detail r.e. current (eg trees), scoreboard, bleachers.
Lack of detail r.e. future pressure on park, maintenance, warranties.*
- Features Not to Include and Why:

CITY OF AMES MIRACLE FIELD & ALL INCLUSIVE PLAYGROUND

Still feels like an “if you build it” exercise and everyone knows how that worked in Dyersville. Concept great. Location does not make sense.

- Additional Comments:
*Concern for direct area residents.
Do not understand why additional pressure put on Inis Grove when there are other more appropriate under-utilized areas. (eg old carr pool site – with existing block – this location could be better secured. Concern this setup invites vandalism – eg cleat on play surface.
Also much space/amenities around Northwood old school site.*

Comment Form 26:

- Favorite Feature(s) and Why:
I like the swing that people can use with more than one person.
- Additional Comments:
If their will be bike racks to be at the park.

Comment Form 27:

- Additional Comments:
Lions Club

Comment Form 28:

- Favorite Feature(s) and Why:
Paved trails would be great; also limited trails that are non-paved for tactile sensory maybe by using small pebbles for some trails.
- Other Features to Consider and Why:
Lighting for activities during dusk/night; maybe adding some bid/owl hunting at night or stargazing activities for families.
- Additional Comments:
Love the different climbing and using different sensations with rocks/coves having children discover different cement animals to improve perceptions and site acuteness.

Comment Form 29:

- Favorite Feature(s) and Why:
*Paved trails – offer access to all!
Keep the lighting! Necessary for safety and inclusions.
Music area – allowing for all abilities to experience music.*
- Other Features to Consider and Why:
While sound may be an issue for a few – it will be beneficial for so many more! When you’re supporting people with disabilities you have to think of those with hearing issues too.
- Features Not to Include and Why:
I got nothin’ – this is awesome!
- Additional Comments:
*A 4-way stop at Duff & 24th will really help with traffic to and from the park.
I love all the different elements for different ages and abilities.*

Comment Form 30:

- Favorite Feature(s) and Why:
Sliders canyon

CITY OF AMES MIRACLE FIELD & ALL INCLUSIVE PLAYGROUND

- Additional Comments:
Way to go Ames Park & Rec! Being courageous in the defeat of Nimbyism! It will be a proud asset in Ames in the perfect park.

Comment Form 31:

- Favorite Feature(s) and Why:
Acorn music hall – multisensory. I really like the entire design!! The equipment for 24 month range. We need to address assisting kids with disabilities as early as possible.
- Other Features to Consider and Why:
Is the path along Duff 10' wide? If not, it should be widened for future use as multi-use path. Bus turnaround??
- Additional Comments:
*Awesome amenity for Ames. Fall steam ahead.
Interesting to hear that the topography of Inis Grove actually works to the advantage in constructing the older kids playground.*

Comment Form 32:

- Favorite Feature(s) and Why:
How you've integrated this into the existing site/topography.
- Other Features to Consider and Why:
Sensory interpretive signage options other than just visual; auditory touch for information?
- Additional Comments:
Somewhat hard to see what is existing vegetation and what is proposed. Will you be incorporating berms along the south side to buffer from neighbors? Overall – great layout.

Comment Form 33:

- Favorite Feature(s) and Why:
Spinning features. Swings if big enough. Good for autistic children. I like the playground. I don't like the ballfield.
- Other Features to Consider and Why:
Slides and swing need to be weight rated for adults – 200-300 lbs – since many with intellectual disabilities will want to play.
- Features Not to Include and Why:
*No sound system. Inappropriate in a residential neighborhood and will be extremely disruptive to a severely disabled resident who has extreme auditory sensitivity. A sound system will literally drive him out of his home.
No lights. The lights currently in use at the sand volleyball pits are poorly adjusted and often shine all night. This will be quite disruptive to residents living directly across from the park.*

Comment Form 34:

- Favorite Feature(s) and Why:
*General neutral restrooms for transgender/agender individuals.
Sensory areas and swings will attract and entertain children with autism spectrum disorders/SPD, ASD is very common.
Fenced in areas, kids like to elope.*
- Other Features to Consider and Why:
*Little free libraries near areas where you can sit, for parents and children that want a break or a book exchange.
An area for small children/toddlers so they don't get hurt by big kids w/ a height limit sign.*

CITY OF AMES MIRACLE FIELD & ALL INCLUSIVE PLAYGROUND

I like the 0-5 toddler area but many parents let preteen kids play in such areas and jump around the toddlers. If there is a sign with directions/limits it may prevent that.

Fenced in area for entire playground or at least 0-5 toddler area. (or areas for babies/toddlers)

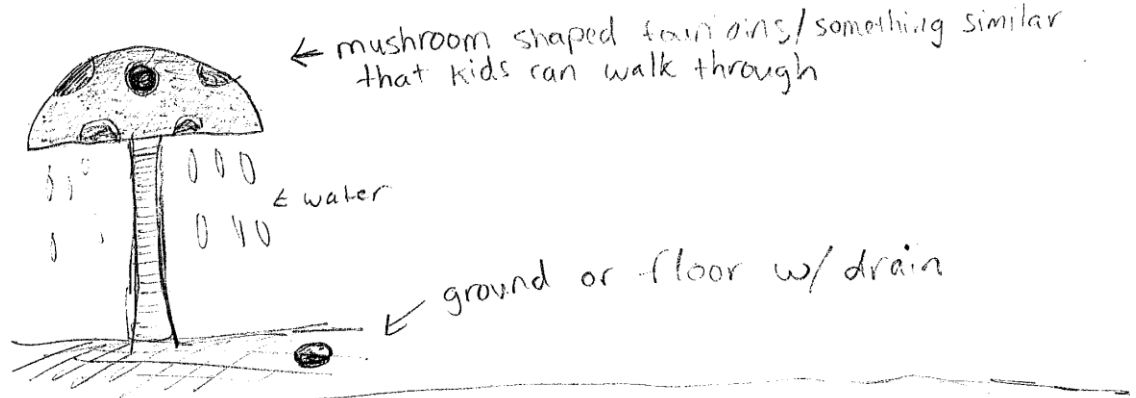
It's difficult to keep an eye on older kids/big kids or adults with intellectual disabilities running into the toddler, and it's a safety issue.

Splash pad for the summer with fountains but no pools/standing water due to safety issues.

For example:

(drawing)

For example:



Vending machines for water/juice near sitting area.

- Features Not to Include and Why:
Reconsider sound system/auditory play area due to children with noise sensitivity. (and neighbors)/noise pollution.
- Additional Comments:
*Roller slides might break easily, get things stuck in them/pinch fingers, or catch clothing. (At DZ Discovery Zone in the 90s it was an issue).
I would donate if we had some sort of brick mural and we could engrave them with donor/children's names for some sort of artwork, wall or flooring.*

CITY OF AMES MIRACLE FIELD & ALL INCLUSIVE PLAYGROUND

Comments from Discussions during Presentation (recorded by Joshua Thompson):

- Will the playground be fenced?
- Will the ravine be accessible?
- What is the anticipated time the park will be used?
 - The amount of time the miracle league will be in use. Will it require more parking?
- Please reconsider the sound system
- Is there room for a bus turnaround?
- What groups do you expect to use this facility at night?
- What activities will be using the miracle field at night?
 - Any concerns to the surface with it being used for other activities?
- How many additional trees will need to be removed?
- Are most of the swings, will they be weight rated for adults?
- Is a zipline a possibility?
- Will stormwater features retain water or will they be dry?
- I think we can assume that there will be kids, teens, older teens using the sound plaza all times of the day.
- Individuals with autism are very attracted to water so I have concerns about the ravine and stormwater.
- Are the parking stalls in the parking lot standard width?
- South and west sides of Inis Grove, there are a lot of trees, how many trees are you proposing?
 - The number of trees you are proposing is deceiving.
- Are there any features for individuals that are blind or deaf?
- What are the replacement costs for the structure and will the City have to add more insurance to cover the additional amenities?
- Are the colors true to the design – are they defined?
- The sidewalk along Duff, will that be part of this project?
- Is there going to be a ball at the park?
- How wide will the path be?
- Is it typical that the lights at the sand volleyball court are on all night?
- Basketball court lights are on all the time.
- Will there be security lights around the structure and miracle field?
- Miracle field in Ankeny has a concession stand, is that being proposed at this park?
- Scoreboards and stands (bleachers)
 - Will there be stands and a permanent scoreboard?
- How many parking spots are there?
- Will advertising be placed or allowed?
- Do you have ballpark (price) figure for this project?
- Will it be available for service animals?
- Are the cement pads on the 1st and 3rd base paths the same size?
- Date when this may open?
- Will there be bike racks?
- Is the ball field going to be open to the public for concern of the surfacing?
- Will you be putting the bridge back that will connect the two sections of the park?
- Do you have a sense for the maintenance costs of these parks?
 - Will it be a strain on the budget of Parks & Rec?
- Are you afraid of people drawing inappropriate wording at the park?
- Will the drive into the east parking lot be adjusted?
- Looking forward to taking my children into the woods.
- Thank you for the work on this.
- The plan is better than I would have imagined.
- 3 yrs down the road, will there be potential for changes to the equipment?
- If you don't put the speakers in, how else will individuals be able to hear the game?
- Are you planning on measuring the pressure to the park?

CITY OF AMES MIRACLE FIELD & ALL INCLUSIVE PLAYGROUND

- Will you consider adding anything else to the park?
- If there are a lot of needs for use of another field, could another one be added?
- In terms of spreading out of amenities, the city should look into expanding all inclusive amenities throughout all the parks.

Comments from Discussions during Presentation (recorded by Keith Abraham):

- Look at fencing entire playground
- Will ravine still be accessible
- Will more parking be needed
- Bus turnaround
- Reconsider sound system
- How many trees removed
- Evening activities
- Extra activities cause damage?
- Is equip. rate for adults?
- Will retention areas be wet or dry?
- Noise plaza used all the time – muted
- Autistic children attracted to water
- Are stalls standard sizes?
- Trees along south & west will they need to be added (Trees on plan deceiving)
- 24th Street Path – Concern about slope
- Are there items for blind and deaf
- Insurance, maintenance and funding
- Are surface colors on plan what will be
- Security lighting

ATTACHMENT C

Additional Correspondence Regarding All Inclusive Playground and Miracle League Field Design

Hi Keith,

My name is Mike Long. Unfortunately I am unable to attend the public meeting being held tonight regarding the Miracle League ballpark proposed for Ames. I would like to give my whole hearted support to the project. My son Quinn has special needs and up until the fall of 2015 lived with me in Ames and attended AHS. Because there were no group homes in Ames for kids under 18 he had to move to a Childserve home in Grimes. My son is now 18 and will be moving back to Ames soon. While it has pained me that he has not been closer to me, I have been heartened by the fact that there were so many more opportunities in the DSM and surrounding communities for him to participate in activities not usually available to special needs kids. One of these activities is Miracle League at Principal Park. If you have not attended one of these games you need to. Everybody needs to. To see the looks on these kids faces while they participate will surely bring tears to your eyes. Whether my son is able to participate after age 18 I am not sure. Either way; a Miracle League Park will surely improve the opportunities for what I feel is an underserved portion of our great community. I would also like to say that it would be my pleasure to participate in any volunteer activities to support this cause.

Please feel free to read this email to the attendees at tonight's meeting.

Sincerely,

Mike Long

Keith

Thanks, I did review the slide show presentation — great information — and will submit comments on the website form.

The parking changes (moving the stop sign to 24th street and parking on one-side only on 24th St. and on Broadmoor) are all good. The number of trees surrounding the central green space and the walkways is an excellent feature.

My primary concern has to with parking, much of which will be driven by scheduling. In that vein, was a parking study prepared and could you share that? I assume a draft proposal for scheduling of the various components (the volleyball courts, Miracle League field, shelters, tennis/pickelball courts etc.) would be needed to prepare a parking study; I would also appreciate that information.

I would suggest not installing lighting on the Miracle Field and focusing scheduled usage on Saturday and weekday daylight hours. I would also encourage that the

Miracle League sound system be used only for Saturday morning/afternoon Miracle League games.

Thanks,

Betty

Favorite Feature(s) and Why:

The parking changes (moving the stop sign to 24th street and parking on one-side only on 24th St. and on Broadmoor) are all good. The number of trees surrounding the central green space and the walkways is an excellent feature.

Other Features to Consider and Why:

Features Not to Include and Why:

The playground proposals show a great diversity; however, there are so many different components it is hard to visualize how they would all fit/work within the proposed area. I would strongly consider dropping the musical component.

Additional Comments:

My significant concerns center around lighting and parking and both are tied to scheduling. Has a proposed scheduling plan and parking study been completed for all of the recreational components in Inis Grove? The potential conflicts between three shelters, four volleyball courts, tennis/pickelball courts, and a Miracle League field — all with lighting — mean there is likely inadequate parking if all are in use at the same time.

I would recommend not installing lighting on the Miracle Field and focusing scheduled usage of the field on Saturday and weekday daylight hours.

I would also encourage that the Miracle League sound system be used only for Saturday Miracle League games.

Name: Elizabeth Baird

On May 11th Keith Abraham led a discussion of the planned Miracle League Field and All-Inclusive Playground slated for installation in Inis Grove Park. Mr. Abraham indicated that the hope is to have these facilities operational by the end of July 2018.

Before discussing the plans it is instructive to recall the chief reason cited by Mr. Abraham for selecting Inis Grove Park over other sites in the city for these facilities. Inis Grove Park is not in the flood plain and the very expensive Miracle League field rubberized surface is not warranted to survive flooding. Other reasons were cited later by proponents of the facility but the basic argument was financial. Siting the facility at Inis Grove was preferred because it would protect the investment in the facility.

The Inis Grove neighbors, and others in the city, were concerned that placing the new facilities in the park would be inconsistent with the residential nature of the community. They also noted that the new facilities were being proposed before the impacts of the new sand volleyball courts on traffic and congestion were understood; they continue to worry about light and noise pollution from the new facilities that could change the character of the neighborhood. The Parks and Recreation Commission was sensitive to these concerns and requested that the facilities be designed to minimize these impacts on the neighborhood.

The park design was presented by Snyder & Associates and received a warm reception from attendees at the meeting. The plan presented was conceptual and included some park enhancements proposed by the designers for implementation by the city in the future. While the conceptual design appeared to honor the direction given to Mr. Abraham to use no more than 25% of the large open space bounded by Duff Avenue and 24th St. several people wanted to see detailed plans that include accurate dimensions to ensure that the plans meet that design specification.

Two issues were raised during the Q&A that raised particular concerns. First, it was revealed that the rubberized field surface will be open to use by anyone at anytime when it is not reserved for scheduled events. In that case, there will be no way to insure that footwear or equipment that can damage the surface will not be used either inadvertently or with deliberate intent to damage the field. Should this occur, the replacement of the expensive rubberized surface could be required frequently or, at a minimum, there could be costly maintenance. [The park is regularly visited by deer who have sharp hooves that can also damage the surface. A fence may be required to safeguard the investment in the field; of course, it should be high enough to keep the deer out.] Second, in response to a question about whether, if the field proves very popular, it would be possible to place another field next to it, Mr. Abraham did not strictly preclude such a development. He said that Parks and Recreation wants to distribute amenities throughout the city but that it would consider such a possibility should conditions support it. Finally, the discussion did not reveal any new information about

how the new facilities will impact traffic on Duff Avenue and 24th Street. Mr. Abraham mentioned that City Council will be asked to change allowable parking on 24th St. along the south side of the park in accord with resident requests and it was noted that that it will be necessary to widen the street where it goes into the parking area east of the park so that buses can more easily drop off passengers and turn around to exit 24th St.

To conclude, the conceptual plans appear attractive to the neighborhood and it is reassuring to see that neighborhood concerns appear to have factored in the design. However it will be important for many in the neighborhood to see final, detailed designs. It will also be important for the City Council to have realistic costs for operating the facilities, which include maintenance and field replacement costs, before approving final construction. **The worst situation for both the facility users and the neighborhood would be the construction of facilities that, due to lack of funding for regular maintenance, fall into decay and disuse.**

Martin Edelson, for the Inis Grove Neighborhood Association

Favorite features and why?

I think you have done a good job of thinking of every possible type of equipment that special needs children might need. I wish the city had worked so hard in the past to develop the playground equipment in this park before this project.

Other features to consider and why?

No comments.

Features not to include and why?

There isn't much explanation of what the Music Hall/Plaza is but there is already plenty of noise in this neighborhood. Since the park is open all the time, this "music" will probably be heard at all hours. Is this equipment really necessary? Also, even though the sound system will be "directed away from neighbor residents" there is no way this won't be heard by the neighbors. I would expect that other organizations will want to use the sound system. If this sound system really necessary?

Additional comments.

I didn't see anything about the on-going, long term cost of this project. Also, it is difficult to fully comment on this plan/layout without having more information about the cost components. Cost is always a variable in any analysis. How can a person comment on whether certain equipment should be included or included not without knowing the related cost?

D. Meyers

2124 Duff Avenue

May 17, 2017

My concerns about the proposed Inis Grove baseball installation:

1. Major destruction of 2 of the 4 acres of green space at 24th and Duff, making it inaccessible for its already popular normal use.
2. No consideration whatsoever given for the environmental damage to nearly an acre (.94 acre) of irreplaceable topsoil planned to be paved by rubber (for a playing surface) and other material (for walking).
3. Lack of environmental impact study (e.g., run-off of rain and snow, which now soaks beneficially into the ground)
4. Misuse of statistics to support the Parks and Rec (and City Council) pre-conceived conclusion:
 - a. Specifically, the "steering committee" estimated between 300 and 500 special needs people in Story County. How was this estimate, and its variance, developed?
 - b. In a presentation (at a different time), Keith Abraham said the rubberized baseball field would benefit 500 people. How was that estimate developed? To be consistent, his "500" needs to refer to 500 individuals, as was the above reference to "300 to 500"

special needs people, not 50 people playing baseball 10 times. Neither alternative was specified.

5. Total avoidance of acknowledging a petition that was signed by over 500 individuals who said such a facility should not be located in Inis Grove Park.

6. There was a major, major ethical violation by the presence on City Council of at-large member Amber Corrieri, Director of Development at Mainstream Living. ,Yet this very obvious conflict of interest was never presented at any of the Parks and Recreation or City Council meetings I witnessed. While she might counter that she did abstain from the City Council vote that moved the proposal forward her position on that issue was well-known by members of the Council and Parks and Rec, and that her professional intentions had the ability to unduly influence the votes of those two bodies. If this is a viable long-term project, surely the proposal could have been delayed until her term on the Council was completed.

7. Promoters of the rubberized field idea repeatedly told the park advocates that special needs people in Ames “lacked visibility,” without evidence to support this very offensive claim or the necessity of “visibility” of any specific demographic groups.

8. At a time when baseball is less popular than previously, is the proposed facility one that will best utilize public park resources, assuming that private funds exceeding \$1 million are available?

9. I visited the facilities in Des Moines and Ankeny on Saturday afternoons during scheduled baseball games and observed extensive use of public address systems. In general, this ambiance did not fit my perception of a city park; the Ankeny field was part of a larger sports complex near public schools and the Des Moines field was between industrial buildings with no other purpose. At Inis Grove Park, the proposal presents is a serious concern to a family (on 24th Street) with an autistic child who is extremely sensitive to loud amplified noise. They have discussed the probable necessity of moving to a different neighborhood.

10. Parks and Recreation Commissioner Abrahams spent considerable time explaining how the city would alleviate concerns of increased traffic and need for additional parking. From both of my visits to existing rubber fields, I do not share those concerns. The games were scheduled on weekends (usually Saturdays) in the summer and drew 50 or 60 people (including players, their assistants, volunteer helpers, family and friends), numbers often handled by the park’s picnic shelters.

In summary, without evidence to the contrary, the demand for the proposed rubberized baseball field and for attendant infrastructure is illusionary.

C. K. Walter

132 Broadmoor Circle

TO: Inis Grove Neighbors

FROM: Clyde Kenneth Walter

SUBJECT: Remarks prepared, but not delivered, for October 25, 2016 City Council meeting

I have already corresponded with City Council members, and sent them my 6 page position paper and my powerpoint presentation. Tonight I have two brief stories, both

true, that took place Sunday a week ago.

A friend asked what I'd been up to lately. She and I are of the same chronological maturity. I told her, working with the Inis Grove Neighborhood Assn. She asked, What's the problem? I said, Kiwanis wants to put in a baseball field there.

She: we don't need a baseball field in Inis Grove Park.

I explained it would have a rubber surface to be safe for children and adults with disabilities.

She said, well that's different.

I said, No It Isn't! It is a private organization asking the city to give them two acres of irreplaceable land (out of 4 acres of greenspace) to subsidize their objectives.

Did I convince this sweet, sentimental grandmother of my position?

Of course not! But I invite the Council to base its decision more on logic and less on sentiment.

Second story: That same afternoon, I took my dogs for a walk, up Broadmoor Avenue to 24th St., the south border of Inis Grove Park.

I saw a group of 5 or 6 people, and I recognized a few of them as international graduate students. The others were friends or family members. If I say that someone was taking their picture, then you know they were standing in front of the trees and I don't need to tell you which trees. Parks and Recreation commissioners might say they were standing between first base and center field.

Why were they there? Several reasons. They appreciated the beauty of the setting, the trees and the field, and they appreciated being together; this was a special moment for friends or family. Maybe the picture will be on someone's Christmas card, maybe on their wall. But they wanted to remember the day and they had discovered one of the prettiest spots in Ames. They showed that Inis Grove is not my park or a neighborhood park, but is for all of Ames and sometimes those thousands of miles beyond. And I was happy.

Then I thought of the destruction being planned for the exact place they were standing and I didn't know whether to laugh or cry.

So I did both.

Thank you for listening.
