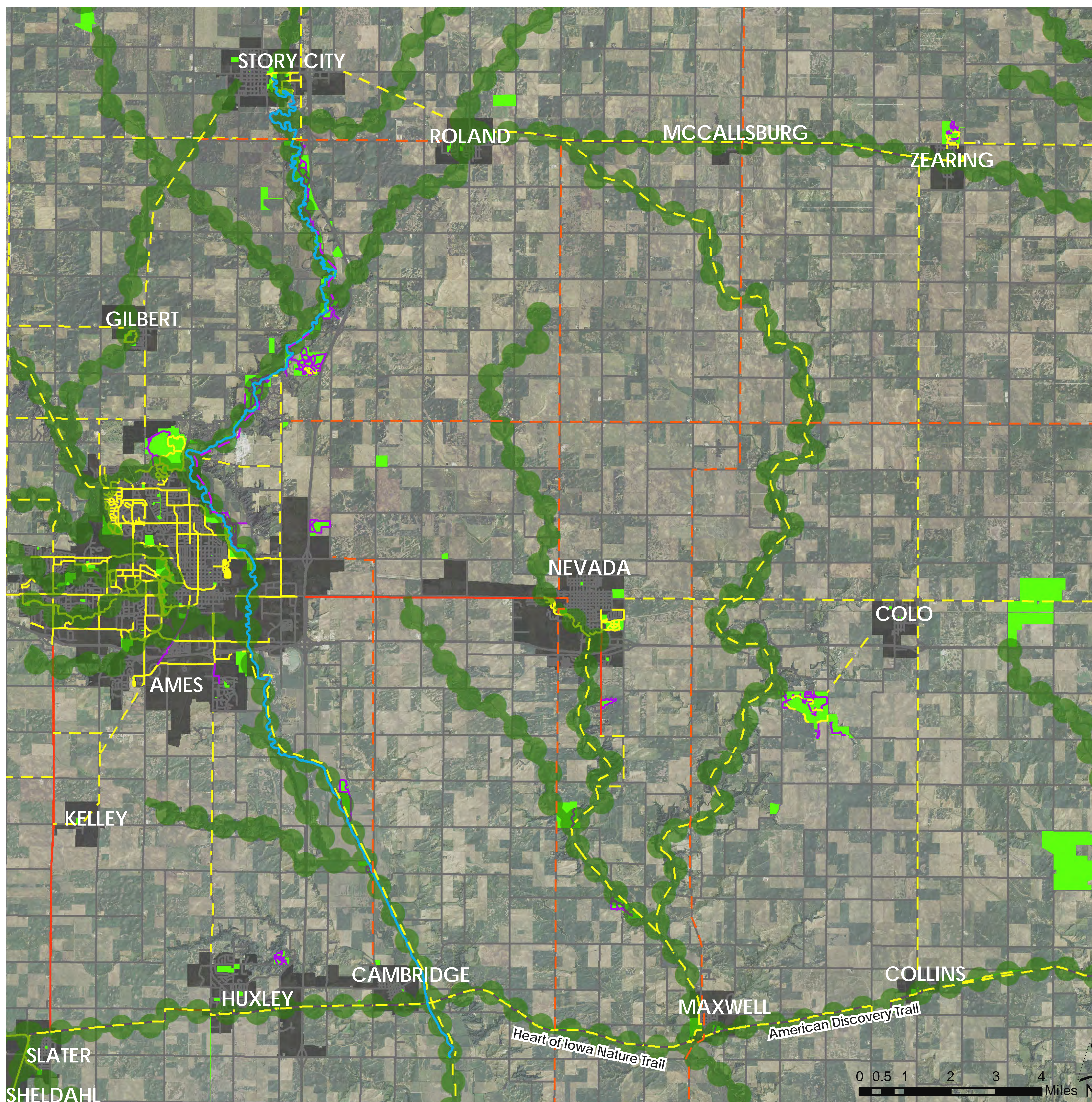
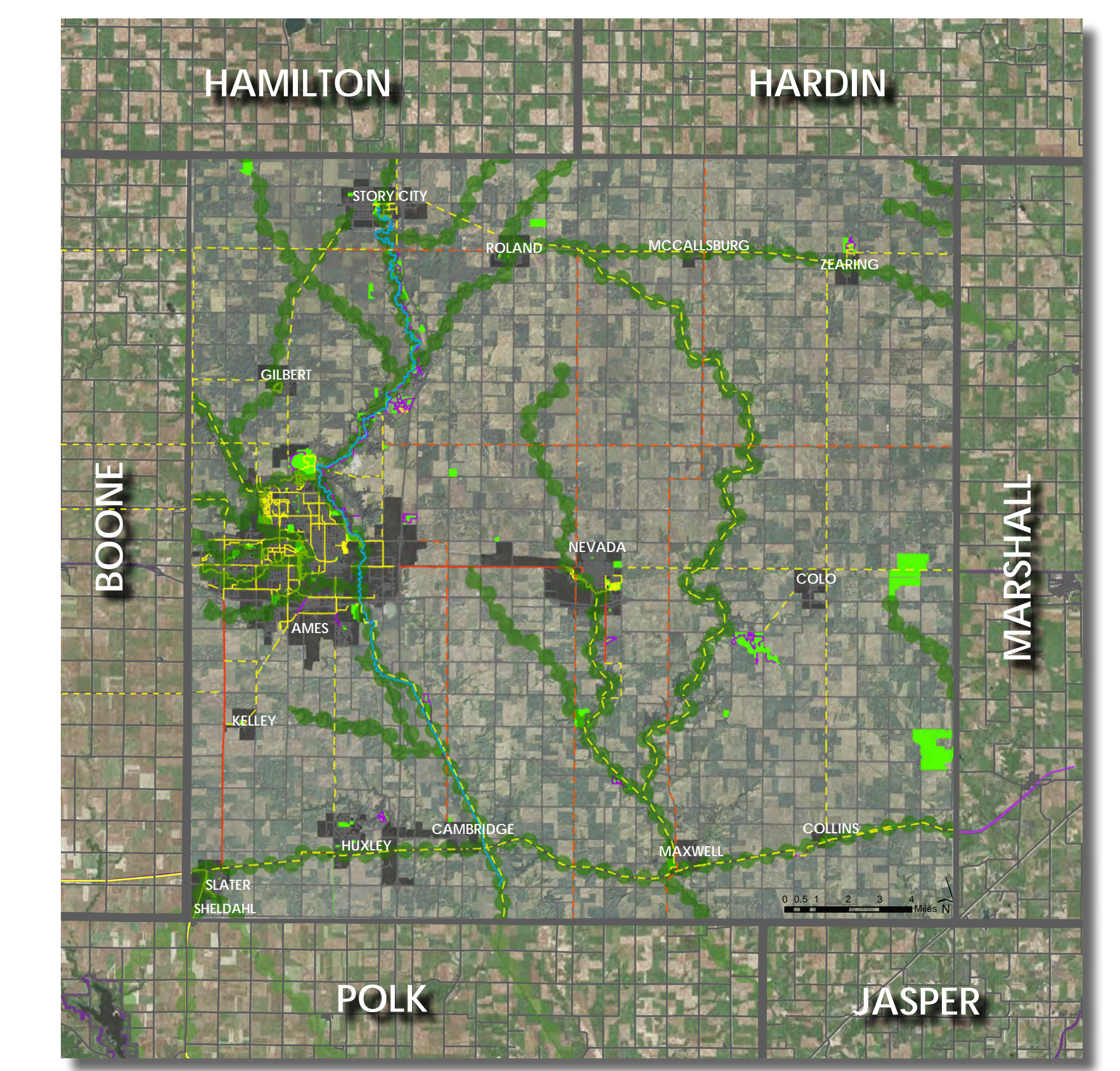


STORY COUNTY PROPOSED TRAILS AND GREENWAYS MAP

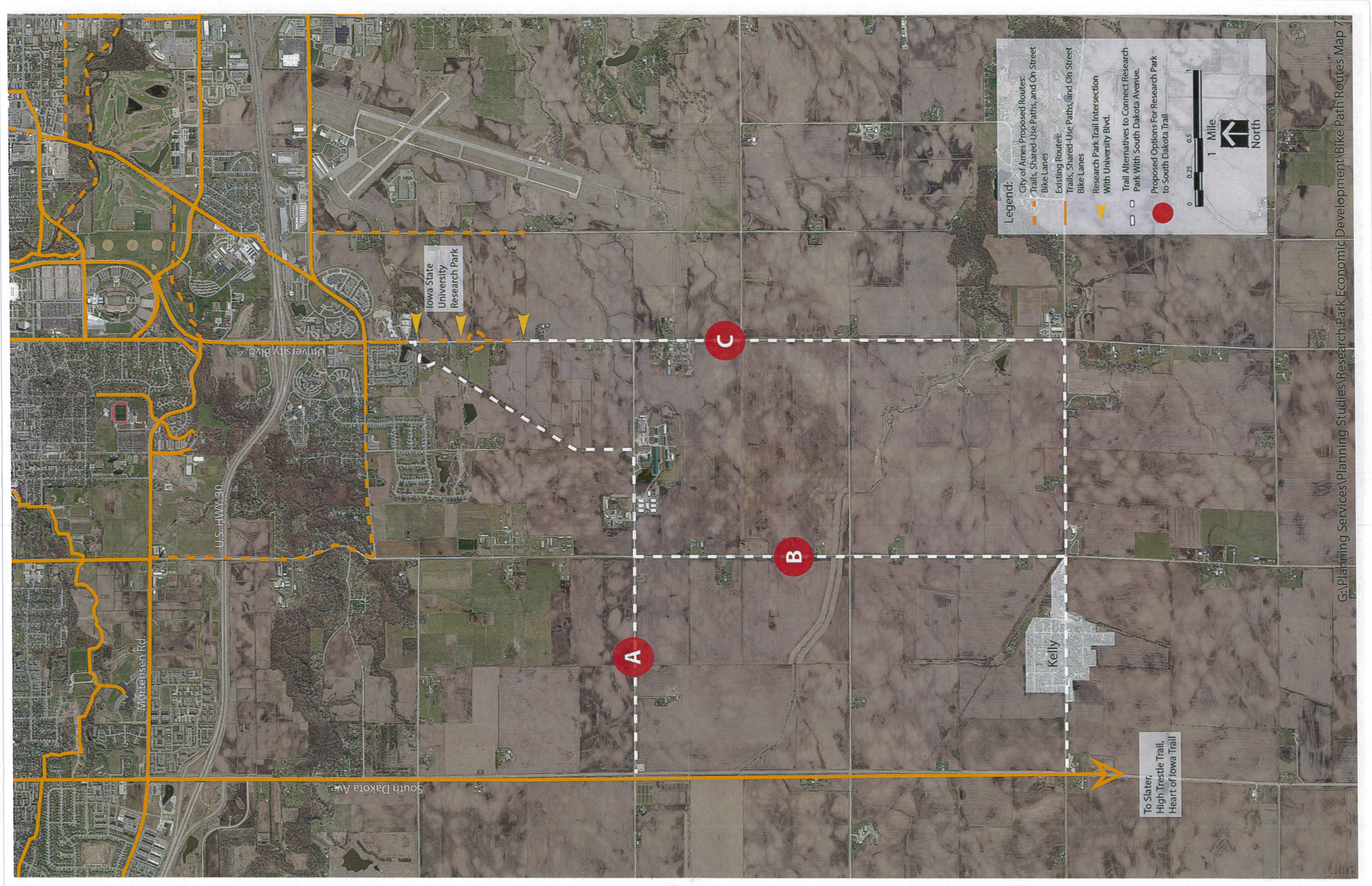


- Legend**
- Existing Hard-surfaced Trail (concrete or asphalt)
 - Existing Soft-surfaced Trail (gravel or dirt)
 - Dedicated Bike Facility (bike lane)
 - South Skunk River Water Trail
 - Roads
 - - - Proposed Hard-surfaced Trail (concrete or asphalt)
 - - - Proposed Soft-surfaced Trail (gravel or dirt)
 - - - Consider Paved Shoulders
 - Proposed Central Iowa Greenways
 - Existing Parks and Natural Areas

CONTEXT MAP:



*PROPOSED TRAIL LOCATIONS ARE VERY GENERAL. NO SPECIFIC TRAIL ALIGNMENTS OR LOCATIONS HAVE BEEN DETERMINED OR ESTABLISHED BY THIS MAP.



South Dakota Ave

U.S. HWY 30

Mortensen Rd.

Iowa State University Research Park

Kelly

A

B

C

To Slater, High Trestle Trail, Heart of Iowa Trail

Legend:

- City of Ames Proposed Routes: Trails, Shared-Use Paths, and On Street Bike Lanes
- Existing Routes: Trails, Shared-Use Paths, and On Street Bike Lanes
- Research Park Trail Intersection With University Blvd.
- Trail Alternatives to Connect Research Park With South Dakota Avenue.
- Proposed Options For Research Park to South Dakota Trail

0 0.25 0.5 1 Mile

North

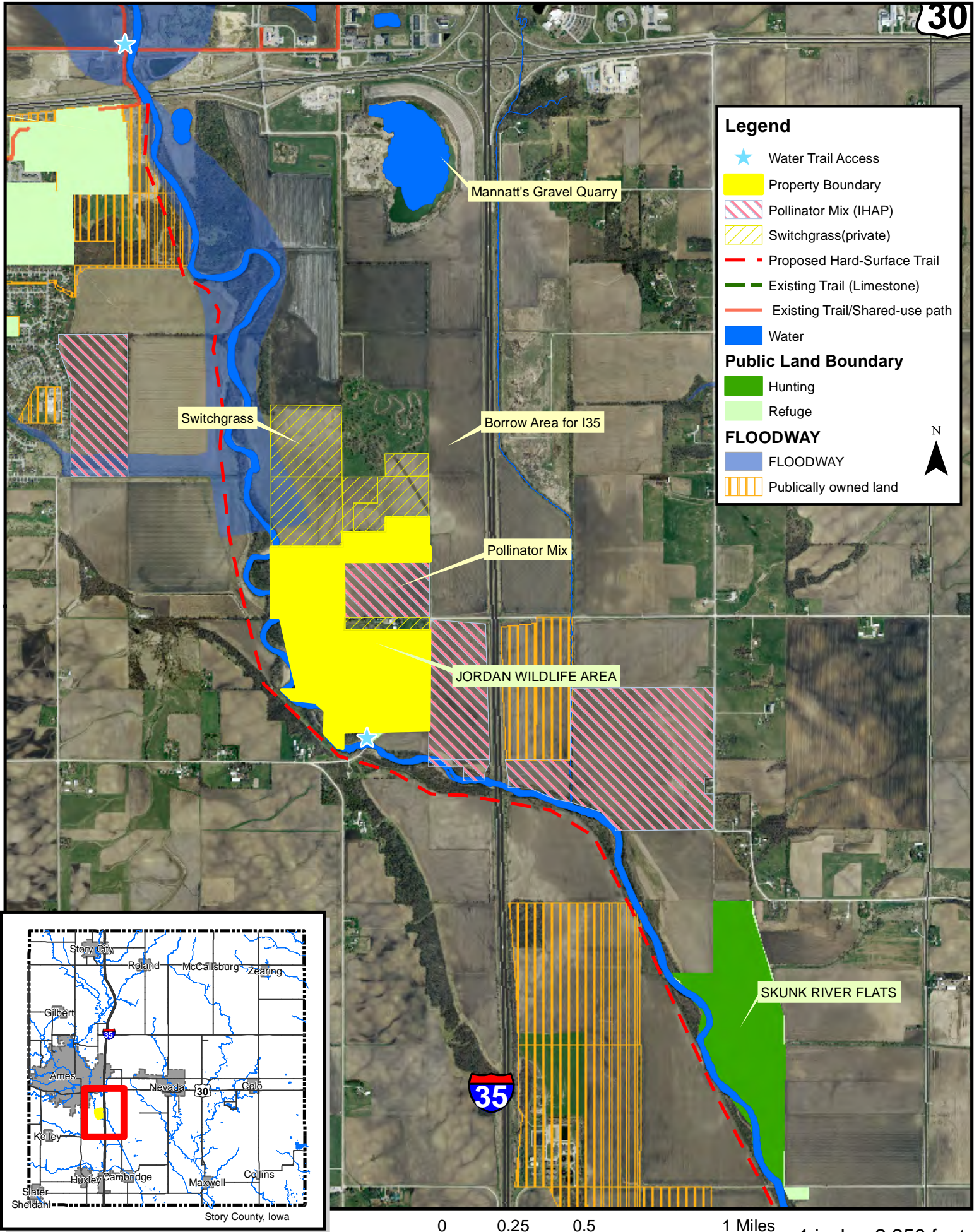
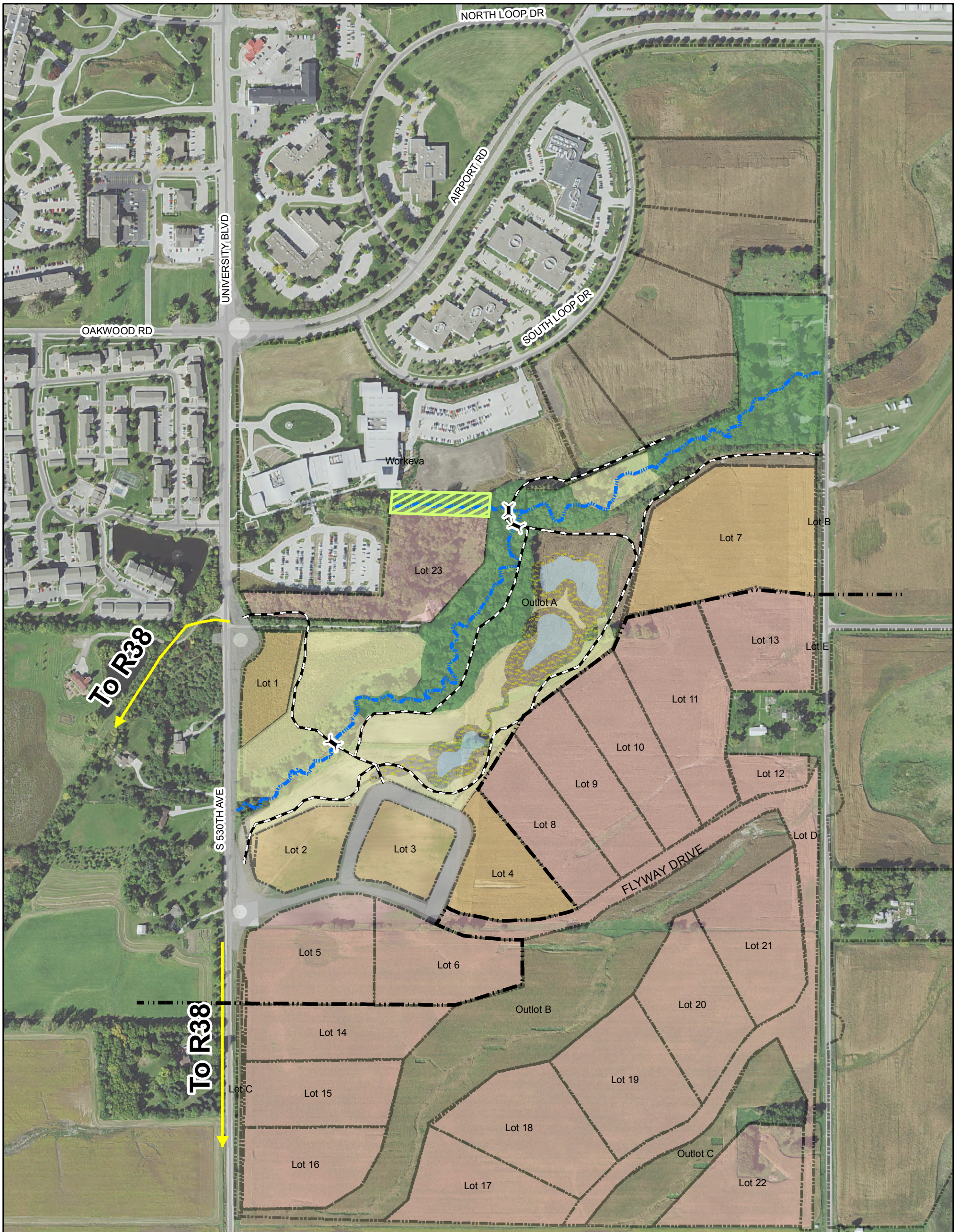










Exhibit B



Research Park Plan

- | | | | |
|--|--------------------|---|-----------------|
|  | Riparian |  | Proposed Trails |
|  | Prairie |  | Trail to R38 |
|  | Wetland |  | Bridge |
|  | Easement | | |
|  | Stream Restoration | | |

