

COUNCIL ACTION FORM

SUBJECT: APPROVAL OF EASEMENTS TO INTERSTATE POWER AND LIGHT COMPANY FOR GAS PIPELINE TO ACCOMPLISH GAS CONVERSION OF POWER PLANT

BACKGROUND:

The City of Ames Electric Department is in the process of converting the power plant from coal-fired to natural gas-fired. Today, there is not sufficient delivery capability to move enough natural gas to the power plant. The City and Interstate Power and Light Company (IPL), a subsidiary of Alliant Energy, entered into a long term agreement through which IPL will provide delivery service. In order to do this, IPL will be installing a new gas line along Lincoln Way, then north to the power plant. IPL is requesting easements over City property for the new gas line.

These easements are being granted at no cost and the subject area is shown in Attachment A.

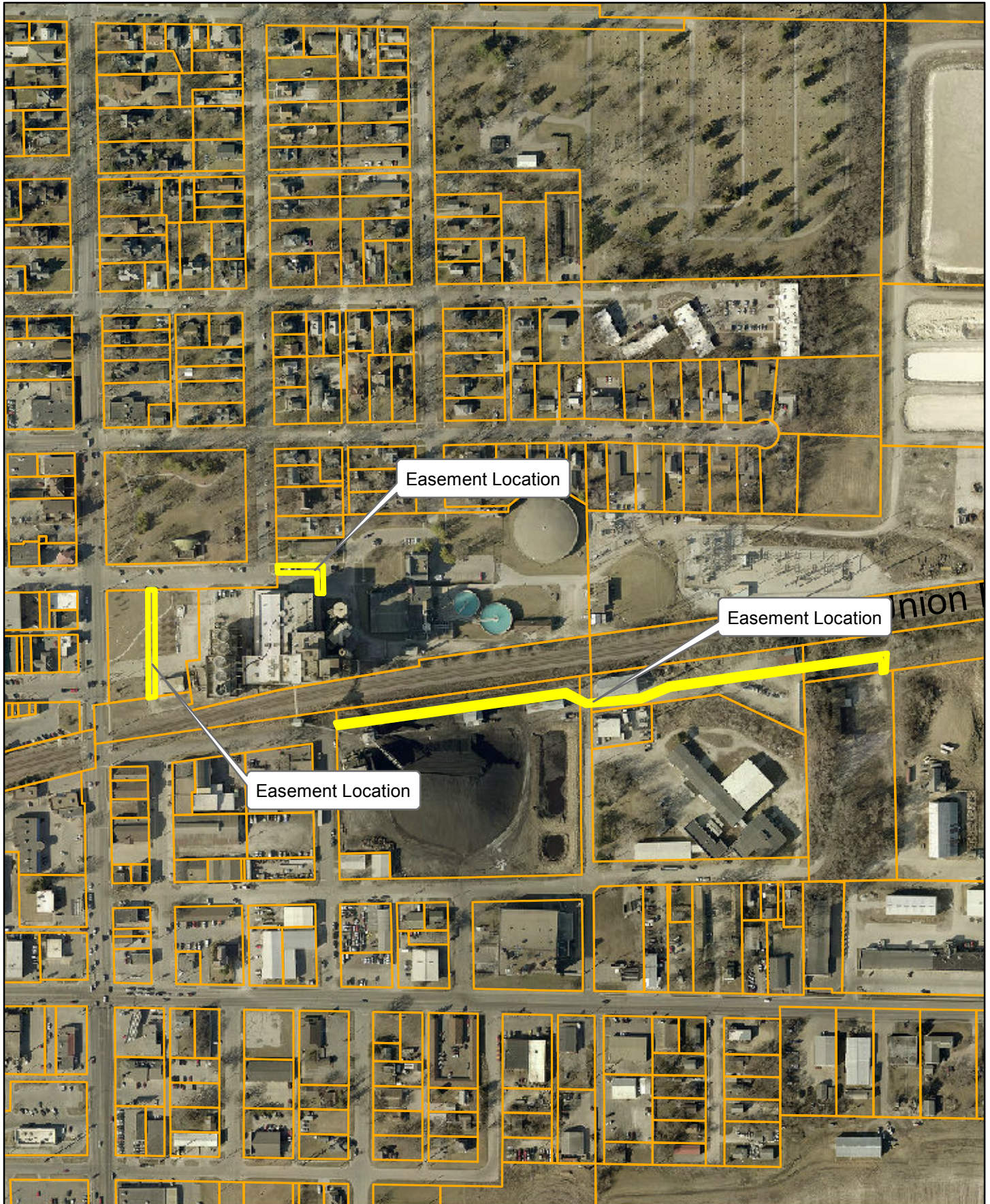
ALTERNATIVES:

1. Approve the easement agreements with Interstate Power and Light Company.
2. Reject the easement agreements.

MANAGER'S RECOMMENDED ACTION:

By approving the easement, construction on the project in the area will continue to remain on schedule for completion.

Therefore, it is the recommendation of the City Manager that the City Council adopt Alternative No. 1, thereby approving the easement agreements with the Interstate Power and Light Company.



Geographic Information System (GIS) Product Disclaimer: City of Ames GIS map data does not replace or modify land surveys, deeds, and/or other legal instruments defining land ownership & land use nor does it replace field surveys of utilities or other features contained in the data. All features represented in this product should be field verified. This Product is provided "as is" without warranty or any representation of accuracy, timeliness or completeness. The burden for determining accuracy, completeness, timeliness, merchantability and fitness for or the appropriateness for use rests solely on the User.



Proposed Easment Locations
Ames Power Plant
Gasification Project



Scale: 1 in = 350 ft
 Date: 7/6/2015