

COUNCIL ACTION FORM

SUBJECT: SAND VOLLEYBALL COURTS LIGHTING IN INIS GROVE PARK

BACKGROUND:

Within the 2013-14 Capital Improvements Plan, funding was approved to construct four lighted sand volleyball courts in Emma McCarthy Lee Park. After working with Snyder & Associates to develop plans, staff informed 70 property owners in close proximity to the park of these plans. The Parks and Recreation Commission received feedback, a majority of which was in opposition to placing these courts in Emma McCarthy Lee Park. The Commission then directed staff to look at alternative sites. Based on the criteria shown below, several options were then presented to the Commission.

- Availability of adequate space
- North-south orientation of courts
- The space not being in the flood plain
- Minimal conflict with existing programs/activities
- Location that already has lights for other activities
- Type of buffer, if any, that exists between the courts and nearby homes? (E.g., trees, distance, other park amenities, etc.)
- Amount of parking is available
- Preference to have this located in a Community Park
- Safety concerns (E.g., increased traffic, pedestrian traffic, etc.)
- Other concerns

Placing four courts north of the tennis courts in Inis Grove Park was the favored option, and staff was directed to meet with Inis Grove Park neighbors. To gather input regarding the Inis Grove location, over 800 letters were sent to property owners in the vicinity of the park inviting them to a meeting to discuss this option. Sixteen residents attended the meeting and were invited to share their concerns, as well as to provide potential solutions to address the identified concerns. Issues raised included drainage concerns for the proposed location, parking along 24th Street and Broadmoor Avenue, and the amount of activity scheduled in the park.

After listening to resident feedback and reviewing staff's recommendation, the Parks and Recreation Commission voted to support the placement of the lighted sand volleyball courts in Inis Grove Park. The courts will be located north of the existing

tennis courts. The court and lighting layout is attached. Staff was also asked to do the following in regards to the concerns raised by neighbors:

- Ensure drainage issues are resolved through the design process
- Review program locations and spread activity throughout the park system
- Work with the neighbors to address the parking concerns along 24th Street (east of Duff Avenue) and along Broadmoor Avenue

PROJECT CONSTRUCTION AND COST:

This project will have two phases, with the first phase being the construction of the courts by City staff. The first phase is projected to be completed by May 31, 2015. Phase two will be the installation of the lighting and will be contracted. The contractor will have until August 31, 2015 to install the lights.

The original budget for this project was \$100,000. To address drainage issues at the Inis Grove site, the new facility layout required the addition of two light poles/fixtures resulting in an increase in the estimated cost of the project to \$117,900. Since the City is no longer expected to contribute to the purchase of gymnasium equipment at the new Ames Community School District grade schools, \$17,900 will be redirected to this project. Below is the breakdown of materials and costs for each phase.

Phase One:

Subdrain Materials	\$680
Sand	\$40,320
Court Border	\$4,000
Posts and Nets	\$4,400
Seeding	<u>\$1,000</u>
Phase One Total	\$50,400

Phase Two:

Lighting and Installation	<u>\$67,500</u>
Phase Two Total	\$67,500

Overall Project Total \$117,900

ALTERNATIVES:

1. Approve plans and specifications for the 2015 Sand Volleyball Courts Lighting in Inis Grove Park and set February 25, 2015 as the bid due date and March 3, 2015 as the date of hearing and award of the construction contract.
2. Do not approve the plans and specifications at this time, delaying the 2015 Sand Volleyball Courts Lighting in Inis Grove Park.

3. Refer this back to staff with further direction.

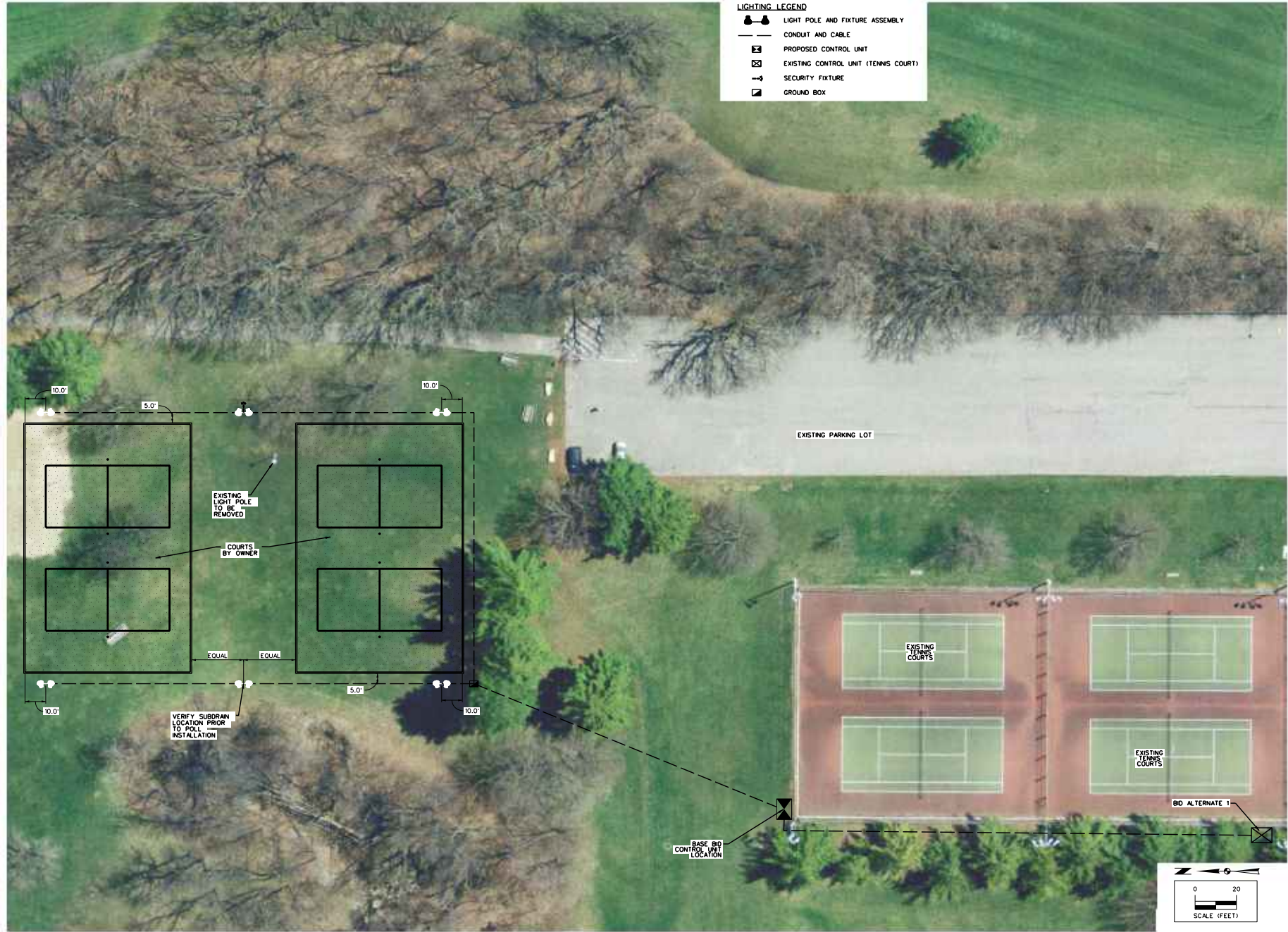
MANAGER'S RECOMMENDED ACTION:

This project came about because of a need for additional quality sand volleyball courts to serve the community. Lighting will address program growth by allowing more teams to play per evening. These courts also provide opportunities for future expansion of programs. After a lengthy input and review process conducted by the Parks and Recreation Commission, the project is ready to proceed at Inis Grove Park.

To address concerns raised by the Inis Grove neighbors, the court and site design has addressed any drainage issues. Staff is scheduling programs throughout the park system, so Inis Grove Park is not overburdened with programmed activity. The last concern regarding parking can hopefully be addressed through a public process engaging neighbors and residents in dialogue as to what is best for all concerned. The staff will report back to the City Council if any ordinance changes are needed to resolve this issue.

Therefore, it is the recommendation of the City Manager that the City Council accept Alternative No. 1, thereby approving plans and specifications for the 2015 Sand Volleyball Courts Lighting in Inis Grove Park and setting February 25, 2015 as the bid due date and March 3, 2015 as the date of hearing and award of the construction contract.

2727 S.W. Snyder Blvd., Ames, IA 50010
 515-664-2020 | www.snyderassociates.com



LIGHTING LEGEND

- LIGHT POLE AND FIXTURE ASSEMBLY
- CONDUIT AND CABLE
- PROPOSED CONTROL UNIT
- EXISTING CONTROL UNIT (TENNIS COURT)
- SECURITY FIXTURE
- GROUND BOX

DATE	BY	REVISION	DATE	BY	
		004	07/15/15		
Project No:	114,1049	Scale:	1" = 20'	Sheet No.:	2 of 2
Project Name:	INIS GROVE PARK - SAND VOLLEYBALL COURTS	Client:	SNYDER & ASSOCIATES, INC.	Project No.:	114,1049
Address:	2727 S.W. SNYDER BLVD., AMES, IOWA 50023	Phone:	515-664-2020	Website:	www.snyderassociates.com

