

~~ITEM# 13  
DATE: 08-12-14~~

**COUNCIL ACTION FORM**

**SUBJECT: PARKING REGULATION UPDATES (NEW STREETS AND MINOR CORRECTIONS)**

**BACKGROUND:**

When new or recently extend streets are completed in developing residential subdivisions, the wording of the Municipal Code’s Parking Ordinance (Section 18) must be updated to reflect these new streets. The following list will bring those street segments into compliance with standard City parking regulations where parking is allowed on one side of the street:

**Newly Paved Streets:**

- London Avenue = No Parking at all times on the north and west sides.
- Coyote Drive = No Parking at all times on the north side.
- Milstead Road = No Parking at all times on the north side.
- Danbury Road = No Parking at all times on the north and east sides.
- Aplin Road = No Parking at all times on the north side.
- Missouri Street = No Parking at all times on the north side.
- Southeast 4<sup>th</sup> Street = No parking at all times on the north side.
- Roden Avenue = No parking at all times on the east side.

**Street Extensions:**

- Ballentine Drive = No Parking at all times on the east side.
- Beedle Drive = No Parking at all times on the east side.

Typical streets within Ames subdivisions are designed to minimize impervious impacts and ongoing infrastructure cost, while proving a safe transportation environment. Due to this fact, parking is only allowed on one side of the street in order to maintain two-way traffic and provide for enough space for emergency vehicle access.

Maps showing the affected sections of streets are attached to this report.

**ALTERNATIVES:**

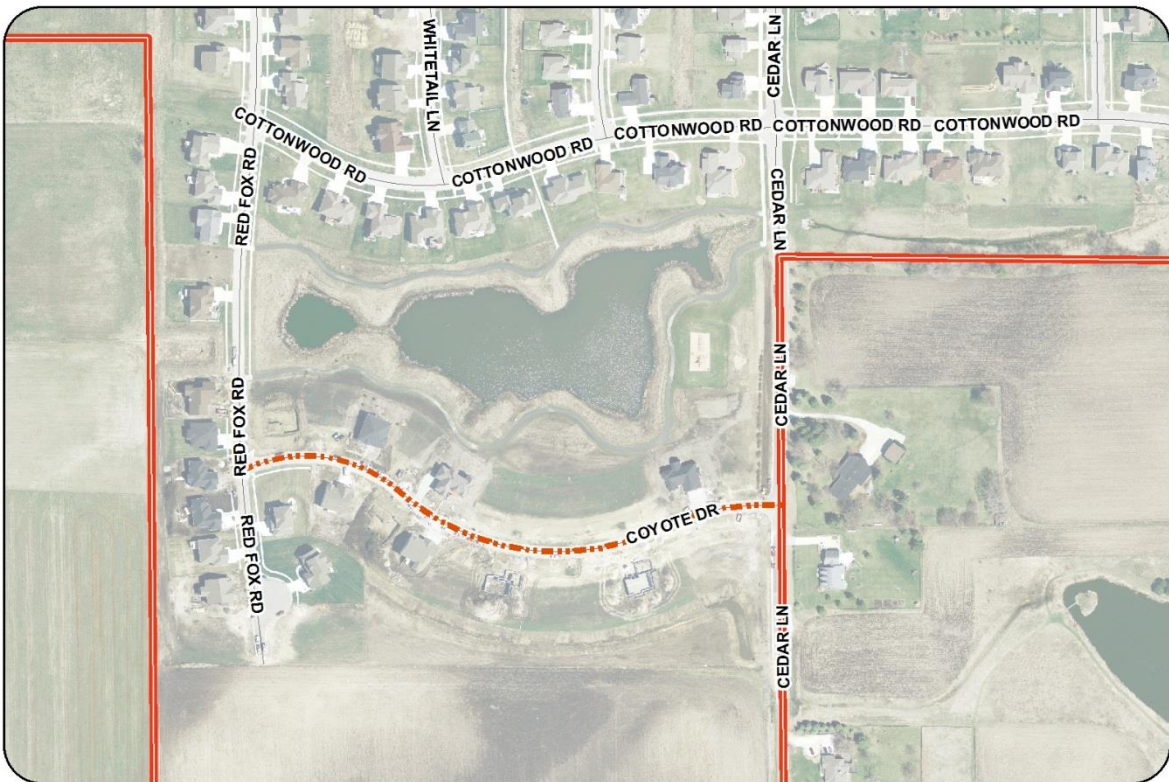
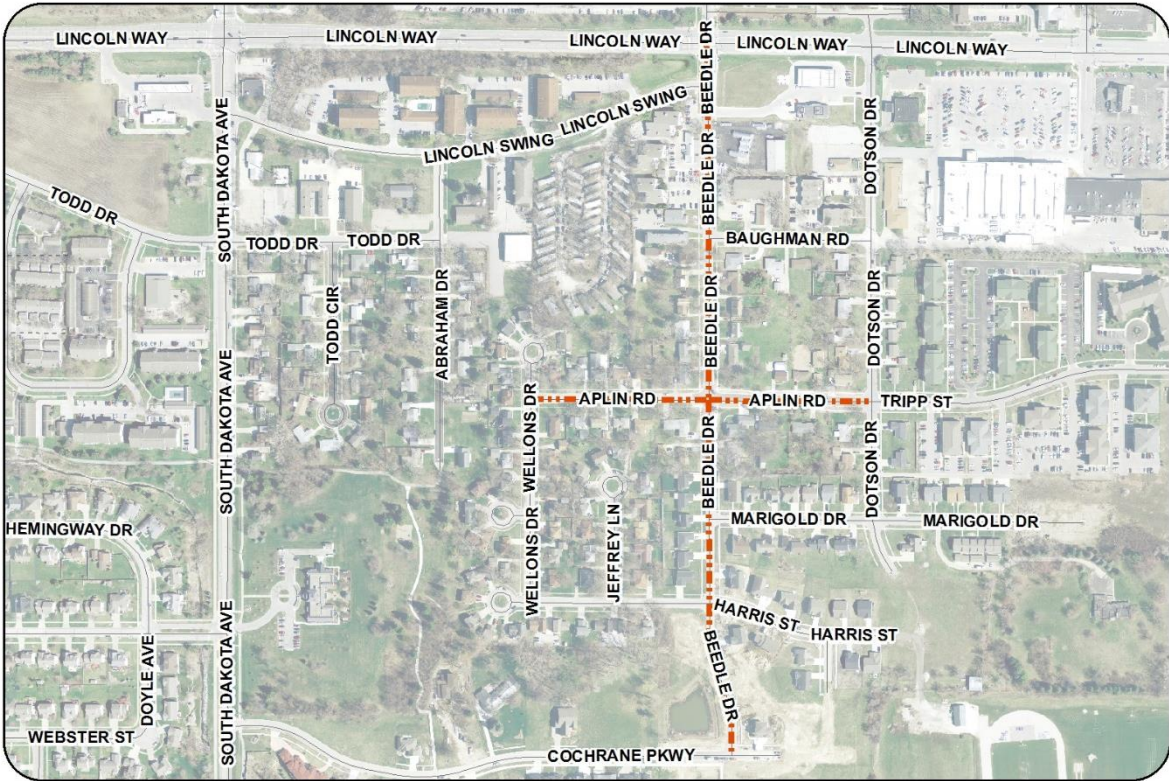
1. Direct the City Attorney to draft an ordinance to change Municipal Code Section 18.31 to codify the parking regulations noted above.
2. Direct staff to leave the parking ordinance section unchanged.

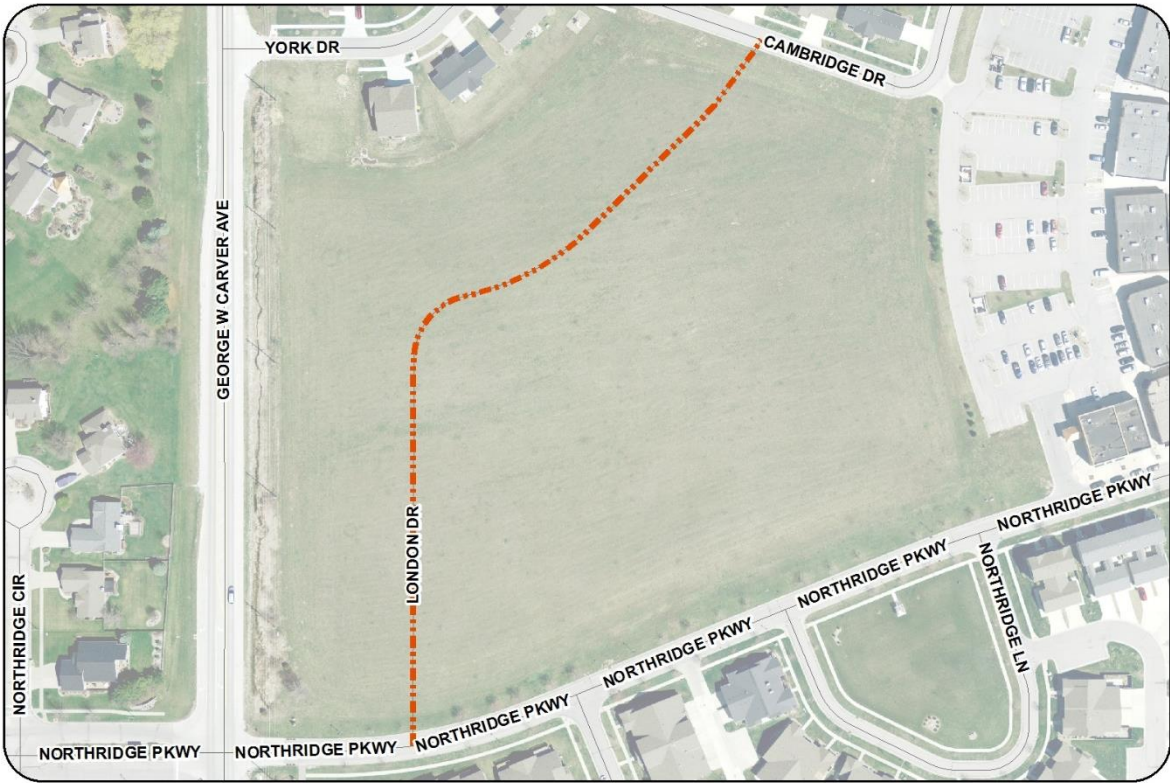
**MANAGER'S RECOMMENDED ACTION:**

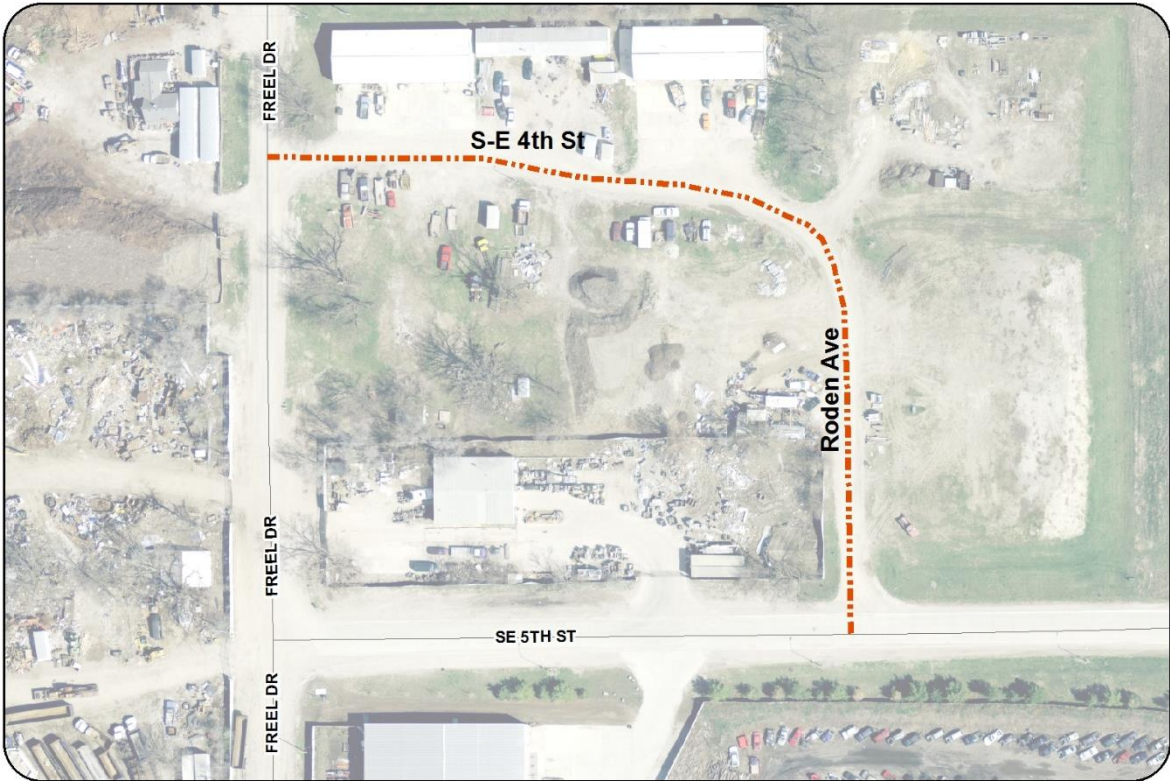
These modifications to the Municipal Code will bring parking regulation on the aforementioned streets into conformance with other streets in Ames.

Therefore, it is the recommendation of the City Manager that the City Council adopt Alternative No. 1, thereby directing the City Attorney to draft an ordinance to change parking regulations as specified above.

**Location Maps:**







ORDINANCE NO.

AN ORDINANCE TO AMEND THE MUNICIPAL CODE OF THE CITY OF AMES, IOWA, BY REPEALING SECTION 18.31(22) AND SECTION 18.31(352) AND ENACTING NEW SECTIONS 18.31(7),(22),(352), (357),(358),(359),(360),(361),(362),(363) THEREOF, FOR THE PURPOSE OF CODIFYING PARKING REGULATIONS ON NEWLY PAVED STREETS AND MINOR CORRECTIONS; REPEALING ANY AND ALL ORDINANCES OR PARTS OF ORDINANCES IN CONFLICT TO THE EXTENT OF SUCH CONFLICT; PROVIDING A PENALTY AND ESTABLISHING AN EFFECTIVE DATE.

BE IT ENACTED, by the City Council for the City of Ames, Iowa, that:

Section One. The Municipal Code of the City of Ames, Iowa shall be and the same is hereby amended by repealing Sections 18.31(22) and (352) and enacting new Sections 18.31(7),(22),(352),(357)(358),(359),(360),(361), (362),(363) as follows:

“Sec. 18.31. REGULATIONS FOR SPECIFIC STREETS OR LOCATIONS.

... (7) APLIN ROAD. Parking is prohibited at all times on the north side of Aplin Road.

... (22) BEEDLE DRIVE. Parking is prohibited at all times on the east side, and on the west side there-of, from Baughman Road to Lincoln Way.

... (352) BALLENTINE DRIVE. Parking is prohibited at all times on the North and East sides of Ballentine Drive.

... (357) COYOTE DRIVE. Parking is prohibited at all times on the north side of Coyote Drive.

(358) DANBURY ROAD. Parking is prohibited at all times on the north and east sides of Danbury Road.

(359) LONDON AVENUE. Parking is prohibited at all times on the north and west sides of London Avenue.

(360) MILSTEAD ROAD. Parking is prohibited at all times on the north side of Milstead Road.

(361) MISSOURI STREET. Parking is prohibited at all times on the north side of Missouri Street.

(362) RODEN AVENUE. Parking is prohibited at all times on the east side of Roden Avenue.

(363) SOUTHEAST 4<sup>TH</sup> STREET. Parking is prohibited at all times on the north side of Southeast 4<sup>th</sup> Street.”

Section Two. Violation of the provisions of this ordinance shall constitute a municipal infraction punishable as set out by law.

Section Three. All ordinances, or parts of ordinances, in conflict herewith are hereby repealed to the extent of such conflict, if any.

Section Four. This ordinance shall be in full force and effect from and after its passage and publication as required by law.

Passed this \_\_\_\_\_ day of \_\_\_\_\_, \_\_\_\_\_.

\_\_\_\_\_  
Diane R. Voss, City Clerk

\_\_\_\_\_  
Ann H. Campbell, Mayor