

COUNCIL ACTION FORM

SUBJECT: SOUTHEAST ENTRYWAY PROJECT ENGINEERING AGREEMENT

BACKGROUND:

This project is a continued partnership between the City of Ames and the South Ames Business Neighborhood (SABN) to complete the following improvement features to the Southeast Entryway: installation of light columns and planting of native plants and flowers (see attachments). A portion of the Southeast Entryway has already been improved with grading and plantings at the intersection of Dayton Avenue and SE 16th Street to the Dayton Avenue overpass. That project was also a partnership with the South Dayton Avenue businesses.

In the 2007/12 Capital Improvement Plan, City Council approved the use of City funds in the amount of \$187,000 (\$148,000 from property owner assessments and \$39,000 from Local Option Sales Tax funds), private funding in the amount of \$106,000 (\$46,000 from the previous project and a new pledge of \$60,000), and an anticipated \$30,000 from an Iowa Department of Transportation (IDOT) planting grant. This would provide the necessary local match to the \$683,000 in state-wide Transportation Enhancement funds previously awarded to the City. Total funding available for the project is \$1,006,000.

A request for statements of qualifications to provide engineering services for this project was sent out in November 2009. Five responsive proposals were received and were evaluated by representatives from the City, IDOT, and SABN. It was determined that Snyder & Associates of Ankeny, Iowa, would provide the most effective design services in an amount not to exceed \$132,344.73. The contract will include design survey, geotechnical services, environmental compliance, public information meetings, roadway design plans, design of the sculptural light columns, and specifications. It should be noted that this contract also includes language to place a mock-up of the sculptural light columns in the area for review of size and scale.

As part of this project, the City of Ames was able to name RDG Dahlquist Studio as the sole source provider of the sculptural light columns. With this in mind, in the future staff will bring preliminary plans to City Council for approval of a notice to proceed before entering into a contract with RDG Dahlquist Studio. This will allow review and comment of the sculptural light columns placement and design. Once the notice to proceed is given, staff will begin working on a contract with RDG Dahlquist Studio.

ALTERNATIVES:

1. Approve the engineering services agreement with Snyder & Associates, Inc. of Ankeny, Iowa, for the Ames Southeast Entryway Project in an amount not to

exceed \$132,344.73, subject to receipt of IDOT and Federal Highway Administration concurrence.

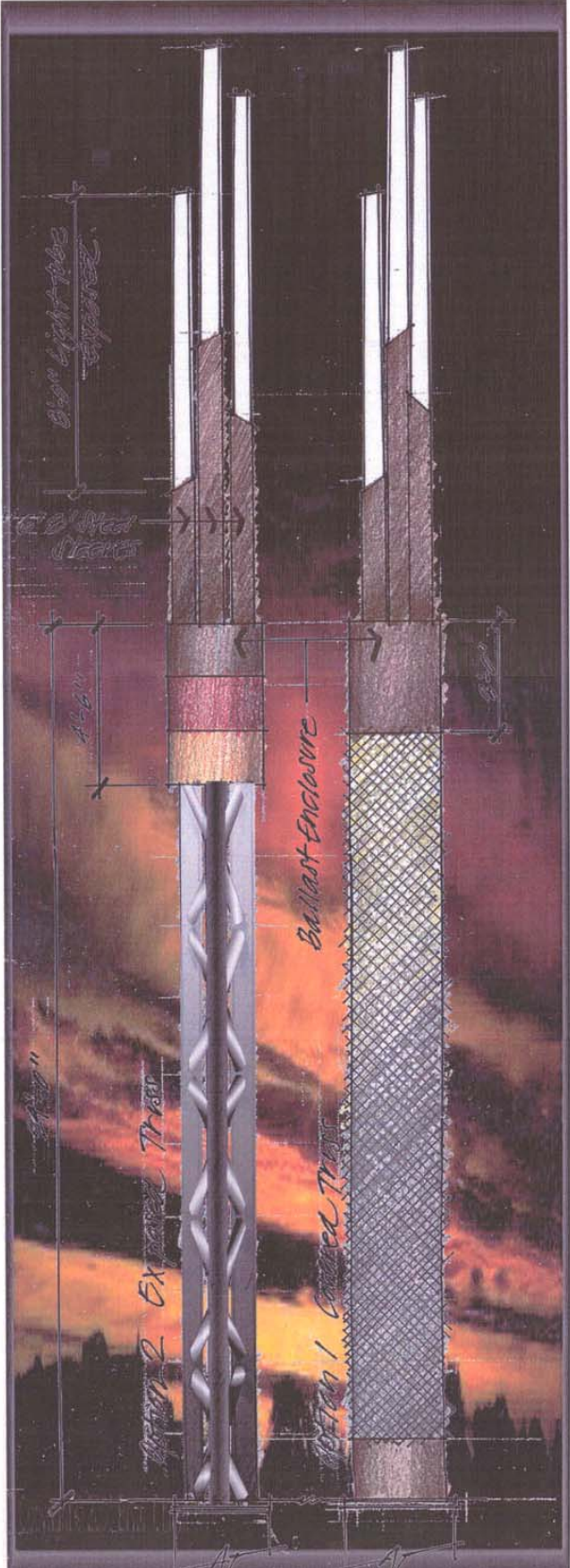
2. Reject the engineering services agreement and direct staff to pursue other design options.

MANAGER'S RECOMMENDED ACTION:

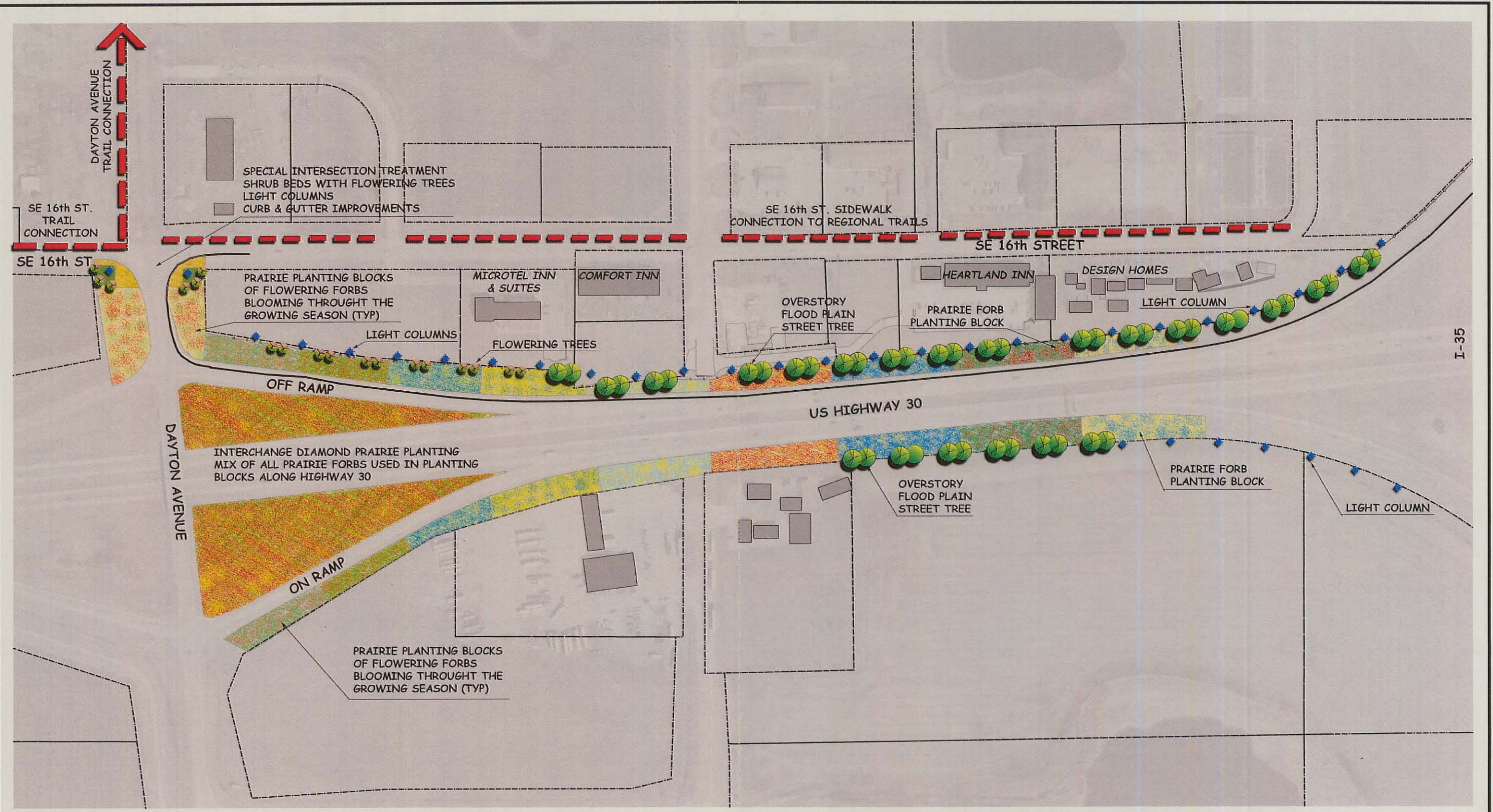
By approving this agreement, it will be possible to move forward with design and construction of the Southeast Entryway project. The current schedule shows a target of February 2011 for IDOT letting with construction to follow in 2011. This targeted date will largely be influenced by the acquisition of easements, since final plans cannot be completed until all required easements have been obtained.

Therefore, it is the recommendation of the City Manager that the City Council adopt Alternative No. 1, thereby approving the engineering services agreement with Snyder & Associates, Inc. of Ankeny, Iowa, for the Ames Southeast Entryway Project in an amount not to exceed \$132,344.73, subject to receipt of IDOT and Federal Highway Administration concurrence.

Ames Southeast Entryway



Concepts for lighted sculptural elements
By Dahlquist Clayworks



Date:
September 2006

Lighting Layout and Planting Plan Concept
Southeast Gateway - US Highway 30
 Ames, Iowa

150 0 150 450
 SCALE IN FEET
 75 300
DUNBAR/JONES
 836 F GRAND AVE., Des Moines, IA 50309
 P 515 281-9000 F 515 281-3509