

ITEM #

DATE:

04-22-08

old  
CAF

34

## COUNCIL ACTION FORM

**SUBJECT:** PARKING REGULATIONS ON TIMBER RIDGE DRIVE

**BACKGROUND:**

In response to filing the Final Plat for The Estates West Subdivision, parking regulations are required for the addition of this new street, Timber Ridge Drive. The City is currently building narrower local streets in an effort to calm traffic. This requires parking restrictions on at least one side of the street to provide emergency services adequate space to set up their equipment.

Timber Ridge Drive connects North Dakota Avenue and Arizona Avenue by way of a partial cul-de-sac, as shown in the attached diagram. Through the development review process for the Estates West Subdivision, many factors were identified such as topography, roadway alignment, location of fire hydrants, and proximity from an arterial street, which left no usable space for on-street parking. Therefore, staff recommends that parking be prohibited at all times on both sides of Timber Ridge Lane.

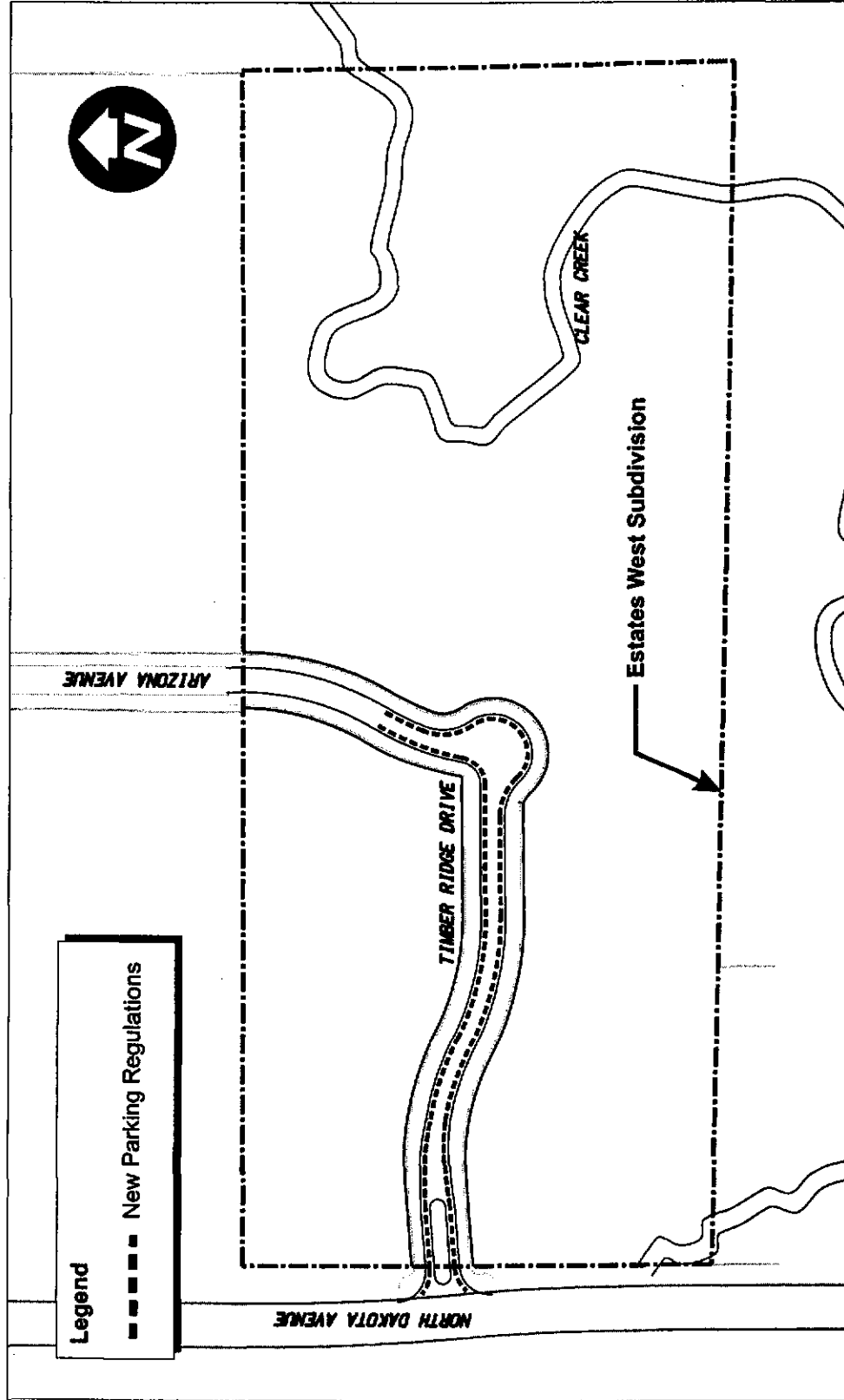
**ALTERNATIVES:**

1. Direct the City Attorney to draft an ordinance to prohibit parking at all times on both sides of Timber Ridge Drive.
2. Reject this ordinance.

**MANAGER'S RECOMMENDED ACTION:**

It is the recommendation of the City Manager that the City Council adopt Alternative No. 1, thereby directing the City Attorney to draft an ordinance to prohibit parking at all times on both sides of Timber Ridge Drive.

Attachments (1)



ORDINANCE NO. \_\_\_\_\_

**AN ORDINANCE TO AMEND THE MUNICIPAL CODE OF THE CITY OF AMES, IOWA, BY ENACTING A NEW SECTION 18.31 (345) THEREOF, FOR THE PURPOSE OF CREATING PARKING REGULATIONS FOR TIMBER RIDGE DRIVE; REPEALING ANY AND ALL ORDINANCES OR PARTS OF ORDINANCES IN CONFLICT TO THE EXTENT OF SUCH CONFLICT; PROVIDING A PENALTY; AND ESTABLISHING AN EFFECTIVE DATE.**

**BE IT ENACTED**, by the City Council for the City of Ames, Iowa, that:

Section One. The Municipal Code of the City of Ames, Iowa shall be and the same is hereby amended by enacting a new Section 18.31 (345) as follows:

“(345) **TIMBER RIDGE DRIVE.** Parking is prohibited at all times on both sides of Timber Ridge Drive.”

Section Two. All ordinances, or parts of ordinances, in conflict herewith are hereby repealed to the extent of such conflict, if any.

Section Three. This ordinance shall be in full force and effect from and after its passage and publication as required by law.

Passed this \_\_\_\_\_ day of \_\_\_\_\_, \_\_\_\_\_.

\_\_\_\_\_  
Diane R. Voss, City Clerk  
O975

\_\_\_\_\_  
Ann H. Campbell, Mayor