

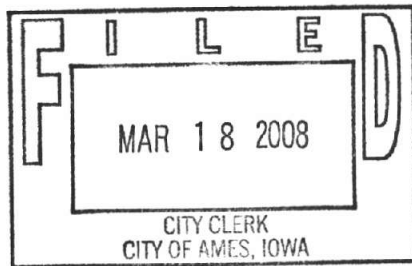
30a+b



City Attorney's Office

515 Clark Avenue, P. O. Box 811  
Ames, IA 50010  
Phone: 515-239-5146 • Fax: 515-239-5142

March 18, 2008



The Honorable Ann H. Campbell, Mayor,  
and Members of the City Council  
of the City of Ames, Iowa

Re: Vacating Electrical Easement and Accepting New Easement at Northcrest Subdivision

Dear Mayor Campbell and Council Members:

A recently completed construction project at Northcrest Subdivision required relocation of electrical transmission lines in Lot 1. As a result, the easement previously granted to the City by Northcrest, Inc., is no longer needed and should be vacated. Northcrest has agreed to grant a new easement to the City corresponding with the location of the relocated electrical transmission line. City staff have reviewed the amended easement and agree that it is accurate and sufficient.

The amended easement plat, attached, indicates the locations of the easement for electrical transmission lines as it will exist following vacation of the current easement and acceptance of the new easement grant from Northcrest. I recommend that the Council adopt the resolutions abandoning the electrical easement in Lot 1, Northcrest Subdivision, and accept the easement described in the amended easement plat.

Sincerely,

Judy K. Parks  
City Attorney

attachment

Prepared by: Kenneth D. Janssen P.E., L.S.; 612 Fifth Street, Ames, Iowa 50010-6005; ph: 515-232-1784 ext. 26

**CERTIFICATION:**

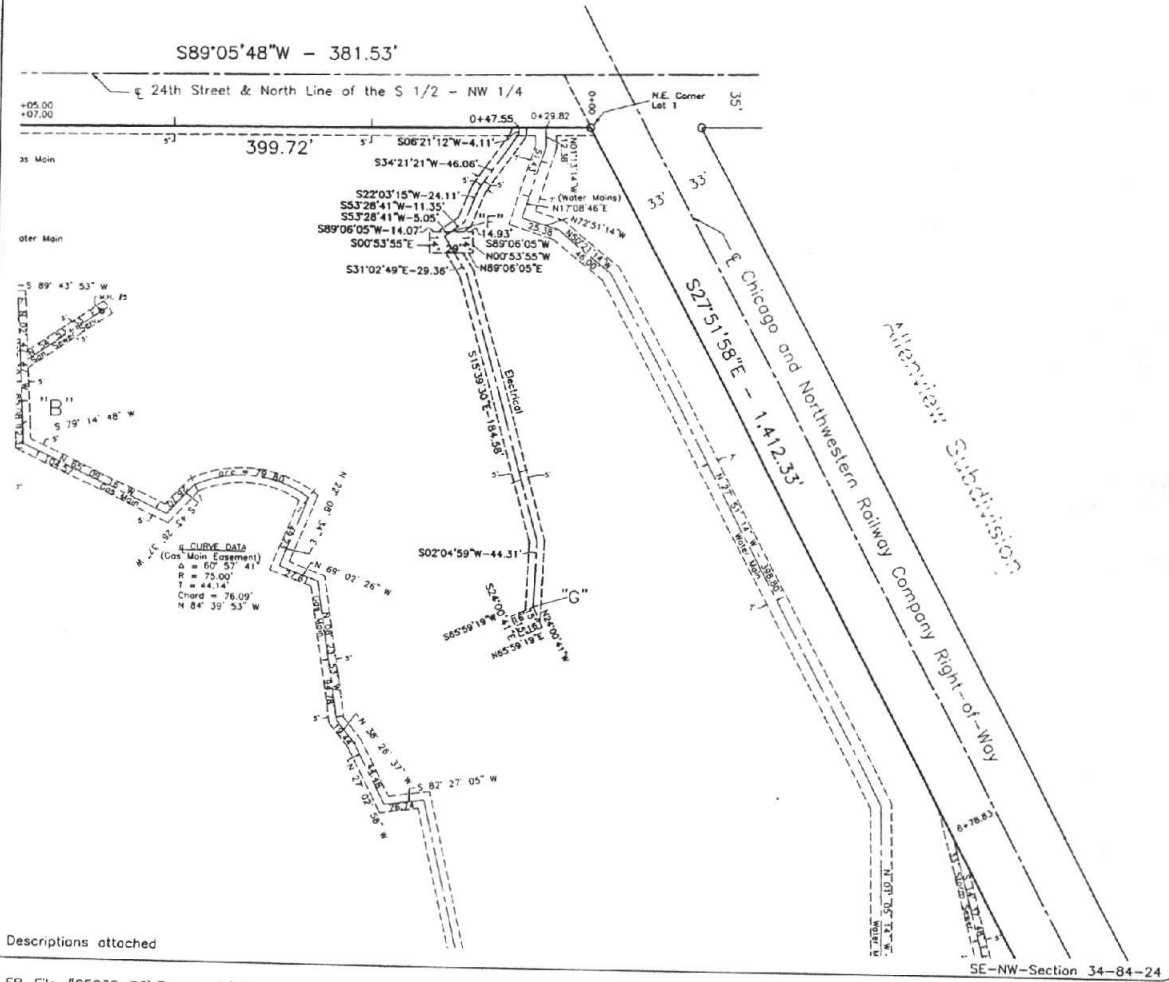
I hereby certify that this land surveying document was prepared and the related survey work was performed by me or under my direct personal supervision, in NOVEMBER, 2007; at the request of Linda Doyle, CEO Northcrest Retirement Community, 1801 20th Street, Ames, Iowa 50010; and that I am a duly licensed Land Surveyor under the laws of the State of Iowa.



SCALE: 1" = 100'



*Kenneth D. Janssen*  
 Kenneth D. Janssen P.E., L.S. #8136  
 License renewal: 12-31-07



EP-File #85038-03\Easements\Easement.Rev.dwg

November, 2007

**AMENDED EASEMENT PLAT**

Lot 1, Northcrest Subdivision, Ames, Iowa  
 Northcrest, Inc. to the City of Ames



Clapsaddle-Garber Associates, Inc  
 612 Fifth Street  
 Ames, Iowa 50010  
 Ph 515-232-8553  
 www.cgaconsultants.com

